



Whitehouse Park

Milton Keynes

A taste of local life

bovishomes.co.uk

**Bovis
Homes** 



Welcome to Whitehouse Park

On the outskirts of vibrant Milton Keynes, Whitehouse Park combines the convenience of city-style living with easy access to the beautiful Buckinghamshire countryside.

Milton Keynes offers a wealth of sport, leisure, culture and shopping and there are local health services and schools. For commuters London is just 35 minutes by train.

There's a wide choice of brand new homes, each carefully designed to suit the needs of today's lifestyles. So if you're looking for a new home from which to enjoy both city and country living, your search ends here.

Getting around

Whitehouse Park is just a few minutes from the A5, the major trunk road linking the city to the Midlands and Bedfordshire. Junction 14 of the M1 lies about 3 miles east of the centre and is easily reached by the A509. The M1 links directly to London and M25, to the Midlands and the north. Trains run from Milton Keynes Central direct to London Euston, in 35 minutes, and to Birmingham New Street. For air travel Luton Airport is 26 miles away.

A trip to the shops

There are a number of local convenience stores close to Whitehouse Park and there's a Sainsburys supermarket just 2 miles away. The centre has more than 400 shops and regular French, German and Italian markets. The central Milton Keynes shopping area consists of the centre:mk and intu Milton Keynes. Together they boast over 270 stores, hosting thousands of brand names and the centre:mk is an official patron of the British Fashion Council. On the edge of the shopping area is the outdoor market and The Hub. The Hub has a mix of bars and restaurants. Just outside of central Milton Keynes there is the Kingston Centre, close to the M1, has some big brand names including a Tesco Extra and the MK1 shopping park near Bletchley has a range of leading fashion giants and restaurants.

In the more rural towns, such as Stony Stratford, you'll find smaller boutiques, craft, gift and antiques shops as well as farmers' markets.

Taking time out

Milton Keynes is packed with sport, leisure and entertainment opportunities. From indoor sky-diving at Xscape to an assortment of outdoor activities at Willen Lake. The Casino MK is the largest outside London and The National Bowl is a major outdoor live music venue. There's a 16 and an 11 screen multiplex cinema plus a host of leisure, sports and fitness clubs and 125 miles of cycle paths.

Milton Keynes has its own museum, 1,400 seat theatre and several arts centres. There are more than 5,000 acres of parkland, lakes and woodlands to enjoy with more than 22 million trees, the Grand Union Canal and River Great Ouse. Outside Milton Keynes you'll find the National Trust's Stowe Gardens and Bletchley Park, home of WW2's secret code breakers.

Education

Whitehouse Primary School is a new purpose built school in the heart of the Whitehouse. Just over a mile away in Two Mile Ash is Ashbrook School. The Queen Eleanor and Christ the Sower Ecumenical Primary, are also within easy reach, as is Greenleys First School. For senior pupils there's Denbigh School, the Hazeley Academy and the Radcliffe School. The new University Centre Milton Keynes, offers further education.



Whitehouse Park

Milton Keynes
MK8 1AL

From M1 Junction 14

- Take the exit from the roundabout onto the A509 (signposted Buckingham and Milton Keynes north and west)
- At the 5th roundabout, take the 1st exit onto Danstead Way H4
- At the 7th roundabout take the 2nd exit onto Longhorn Drive
- Take the 2nd right onto Shorthorn Drive
- Whitehouse Park can be found on the right hand side

From A508 / A5 roundabout

- At the roundabout, take the exit onto A5 towards Milton Keynes
- Take the A422 exit towards Milton Keynes North East & West / Bedford / Wolverton
- At the roundabout, take the 4th exit onto V5 Great Monks St
- At Lodge roundabout, take the 2nd exit onto H4 Danstead Way
- At Crownhill roundabout, take the 2nd exit and stay on H4 Danstead Way
- At the 2nd roundabout, take the 3rd exit onto Longhorn Drive
- Take the 2nd right onto Shorthorn Drive
- Whitehouse Park can be found on the right hand side



When you have finished with this leaflet please recycle it.

Cover photograph of Lodge Lake. Not view from the development. The streetscene shown above has been produced for illustrative purposes only, please check the details of the homes you are interested in with the sales consultant.

Bovis Homes Limited, Northern Home Counties region
Building 7, Caldecotte Lake Business Park, Milton Keynes, Buckinghamshire MK7 8JU. Telephone: 01908 088 500

Produced by the Vistry Group Design Studio.

MMJKL DS05561 / 04.23





Whitehouse Park

Milton Keynes

Development plan
for area off Watling Street

bovishomes.co.uk

**Bovis
Homes** 

Whitehouse Park

Milton Keynes



Whitehouse Park

Milton Keynes
MK8 1AL

From M1 Junction 14

- Take the exit from the roundabout onto the A509 (signposted Buckingham and Milton Keynes north and west)
- At the 5th roundabout, take the 1st exit onto Danstead Way H4
- At the 7th roundabout take the 2nd exit onto Longhorn Drive
- Take the 2nd right onto Shorthorn Drive
- Whitehouse Park can be found on the right hand side

From A508 / A5 roundabout

- At the roundabout, take the exit onto A5 towards Milton Keynes
- Take the A422 exit towards Milton Keynes North East & West / Bedford / Wolverton
- At the roundabout, take the 4th exit onto V5 Great Monks St
- At Lodge roundabout, take the 2nd exit onto H4 Danstead Way
- At Crownhill roundabout, take the 2nd exit and stay on H4 Danstead Way
- At the 2nd roundabout, take the 3rd exit onto Longhorn Drive
- Take the 2nd right onto Shorthorn Drive
- Whitehouse Park can be found on the right hand side



When you have finished with this leaflet please recycle it.

Cover photograph of Lodge Lake. Not view from the development. The streetscene shown above has been produced for illustrative purposes only, please check the details of the homes you are interested in with the sales consultant.

Bovis Homes Limited, Northern Home Counties region
Building 7, Caldecotte Lake Business Park, Milton Keynes, Buckinghamshire MK7 8JU. Telephone: 01908 088 500

Produced by the Vistry Group Design Studio.

MMJKL DS05561 / 05.23



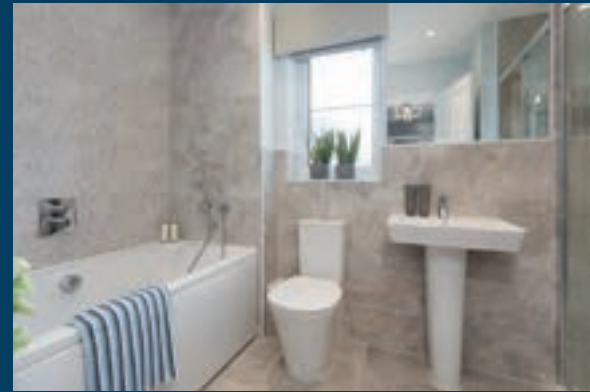
So much choice...

Part of the excitement of buying a new home is the thrill of being the first person to live in the property and having a brand new contemporary kitchen and modern bathroom. Our premium brand partners ensure that all of our fixtures and fittings comply with the latest Government building regulations and only branded appliances are installed in your new home.

Once you know what specification comes included, you'll have a choice from our specially selected tiles for your kitchen and bathrooms, as well as kitchen worktops and cupboard doors. You can then use the Bovis Homes **Select** brochure to add the finishing touches to your home to make it extra special for you!

From personalising your bathrooms with stunning ceramics, or adding smooth sliding wardrobes to your master bedroom, there are a wide range of additional options and upgrades available.

The availability of items is subject to the stage of build, and can vary by development and house type. Our sales consultants will be happy to provide guidance.



Whitehouse Park Milton Keynes

When you have finished with this leaflet please recycle it.

The specification shown in this leaflet is correct at the time of going to press. Bovis Homes is continually reviewing and updating the specification on all housetypes and therefore reserves the right to change specification details. Photographs depict a typical Bovis Homes interior and may include optional upgrades. For full details regarding current specification and finishes, for the plots you are interested in, please refer to our sales consultant.

Produced by the Vistry Group Design Studio.

MMJKL DS05561 / 05.23



Specification

bovishomes.co.uk



Whitehouse Park

Milton Keynes

Use this guide to see what features are included in your new home. Your sales consultant will be happy to discuss the **Select** range of extras available.



Kitchen

	2 bedroom The Sylvie The Hawthorn	3 bedroom The Magnolia The Hazel The Cypress The Spruce The Spruce II	4 bedroom The Nash The Juniper The Chestnut The Chestnut II The Aspen
Choice of fitted kitchen (doors & worktop/s)*	■ ■	■ ■ ■ ■ ■	■ ■ ■ ■ ■
Stainless steel sink and drainer (single bowl) with chrome mixer tap	■ ■		
Stainless steel sink and drainer (single and a half bowl) with chrome mixer tap		■ ■ ■ ■ ■	■ ■ ■ ■ ■
Stainless steel sink and drainer (single bowl) with chrome mixer tap in utility			■ ■ ■ ■ ■
Hob with built-in single under-oven, stainless steel splashback and chimney hood	■ ■	■ ■ ■ ■ ■	
Hob (75cm) with built-in double high level (or under) oven, glass splashback and chimney hood			■ ■ ■ ■ ■
Fridge / freezer space	■ ■	■ ■ ■ ■ ■	
Integrated (Indesit) 50 / 50 fridge-freezer			■ ■ ■ ■ ■
Space for integrated dishwasher with plumbing and electrics	■ ■	■ ■ ■ ■ ■	■ ■ ■ ■ ■
Space for washing machine with plumbing and electrics in kitchen or utility	■ ■	■ ■ ■ ■ ■	■ ■ ■ ■ ■

Bathroom and en suite

Ideal Standard contemporary white sanitaryware suite	■ ■	■ ■ ■ ■ ■	■ ■ ■ ■ ■
Ideal Standard close coupled WC to cloakroom and splashback wall tiling to basin	■ ■	■ ■ ■ ■ ■	■ ■ ■ ■ ■
En suite to bedroom 1		■ ■ ■ ■ ■	■ ■ ■ ■ ■
Thermostatic shower with shower tray and glass enclosure to en suite		■ ■ ■ ■ ■	■ ■ ■ ■ ■
Handheld hair wash attachment to bath		■ ■ ■ ■ ■	■ ■ ■ ■ ■
Thermostatic shower over the bath and glass screen	■ ■		■ ■ ■ ■ ■
Choice of Porcelanosa wall tiling (splashback, half-height over bath, and full-height to shower cubicle)*	■ ■	■ ■ ■ ■ ■	■ ■ ■ ■ ■
Chrome bezel LED bulkhead to bathroom and en suite	■ ■	■ ■ ■ ■ ■	■ ■ ■ ■ ■
Chrome towel warmer in bathroom and en suite			■ ■ ■ ■ ■

■ Fitted as standard - included in the property
* Subject to stage of construction and range of choice available. Please speak to a sales consultant for further details.

Doors and Windows

	2 bedroom The Sylvie The Hawthorn	3 bedroom The Magnolia The Hazel The Cypress The Spruce The Spruce II	4 bedroom The Nash The Juniper The Chestnut The Chestnut II The Aspen
Front door with multi-point security locking system and security chain	■ ■	■ ■ ■ ■ ■	■ ■ ■ ■ ■
Chrome front door numbers	■ ■	■ ■ ■ ■ ■	■ ■ ■ ■ ■
PVCu double glazing to windows	■ ■	■ ■ ■ ■ ■	■ ■ ■ ■ ■
Double glazed PVCu French doors		■ ■ ■ ■ ■	■ ■ ■ ■ ■
Double glazed powder-coated aluminium bi-fold doors			■ ■ ■ ■ ■
White painted internal doors with satin chrome handles	■ ■	■ ■ ■ ■ ■	■ ■ ■ ■ ■
Paving outside French / bi-fold door (where applicable)		■ ■ ■ ■ ■	■ ■ ■ ■ ■

General

White painted walls and smooth white ceilings	■ ■	■ ■ ■ ■ ■	■ ■ ■ ■ ■
Multi-media plate in sitting room	■ ■	■ ■ ■ ■ ■	■ ■ ■ ■ ■
Master telephone socket (plus to study where shown)	■ ■	■ ■ ■ ■ ■	■ ■ ■ ■ ■
Gas central heating with wall mounted combi-boiler, programme selector and room thermostat(s)	■ ■	■ ■ ■ ■ ■	■ ■ ■ ■ ■
Thermostatic valves to all radiators (with the exception of rooms with separate thermostat control)	■ ■	■ ■ ■ ■ ■	■ ■ ■ ■ ■
Fitted external tap	■ ■	■ ■ ■ ■ ■	■ ■ ■ ■ ■
External light fitted to front porch	■ ■	■ ■ ■ ■ ■	■ ■ ■ ■ ■
Wiring for external light to rear door	■ ■	■ ■ ■ ■ ■	■ ■ ■ ■ ■
Mains wired smoke detectors with battery back-up	■ ■	■ ■ ■ ■ ■	■ ■ ■ ■ ■
Battery powered Carbon Monoxide detector (wall mounted next to boiler)	■ ■	■ ■ ■ ■ ■	■ ■ ■ ■ ■
Power and lighting to 'on plot' garage (where applicable)		■ ■ ■ ■ ■	■ ■ ■ ■ ■
Landscaped front garden (where applicable)	■ ■	■ ■ ■ ■ ■	■ ■ ■ ■ ■
NHBC Buildmark cover	■ ■	■ ■ ■ ■ ■	■ ■ ■ ■ ■
First two years' customer service support from Bovis Homes	■ ■	■ ■ ■ ■ ■	■ ■ ■ ■ ■

Use this guide to see what features are included in your new home. Your sales consultant will be happy to discuss the **Select** range of extras available.

Kitchen

- Choice of fitted kitchen (doors and worktops)*
- Integrated oven, hob and hood

Bathroom

- Shower over bath with glazed screen and choice of Porcelanosa wall tiling*

General

- White painted walls and smooth white ceilings
- Front door with multi-point security locking system and security chain
- PVCu double glazing to windows
- Audio door entry locking system
- White painted doors with chrome lever handles
- Media plate to sitting room
- Master telephone socket
- Gas central heating with wall mounted boiler, programme selector and room thermostat(s)
- Thermostatic valves to all radiators (with the exception of rooms with separate thermostat control)
- Mains wired smoke detectors with battery back-up
- NHBC Buildmark cover

* Subject to stage of construction



Watling Manor

Milton Keynes

When you have finished with this leaflet please recycle it.

The specification shown in this leaflet is correct at the time of going to press. Bovis Homes is continually reviewing and updating the specification on all housetypes and therefore reserves the right to change specification details. Photographs depict a typical Bovis Homes interior and may include optional upgrades. For full details regarding current specification and finishes, for the plots you are interested in, please refer to our sales consultant.

This leaflet has been produced for illustrative purposes only. The apartment building shown (including its position) is a computer generated artists impression. Any surrounding areas, landscaping, roads, footpaths, driveways, walls, fences, trees, bushes and other details shown in this illustration are merely to create an impression. Please refer to the sales consultant for details of individual apartments. Please see the development layout plan for details of the apartment location and proximity to other houses.

Produced by the Vistry Group Design Studio.

MMILT DSXX0035 / 10.23



1 and 2 bedroom apartments

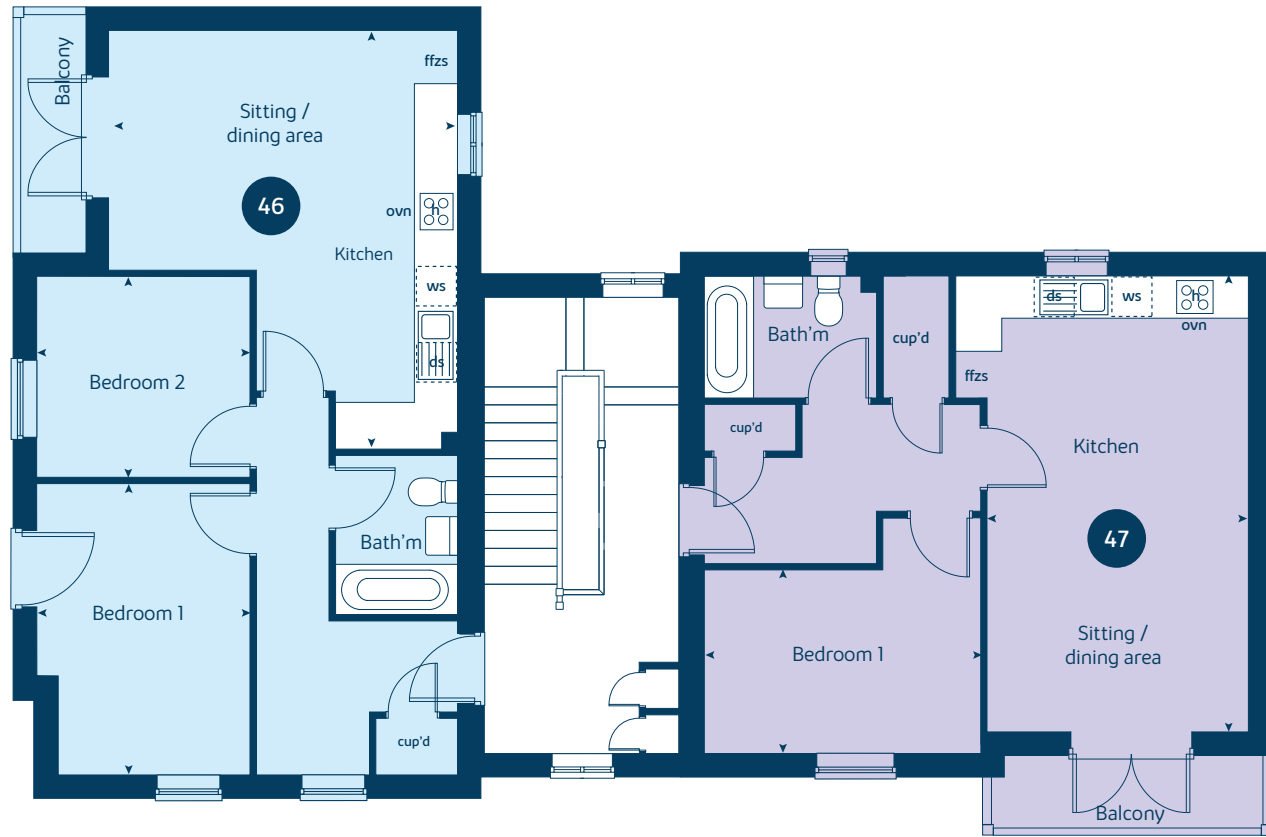
bovishomes.co.uk



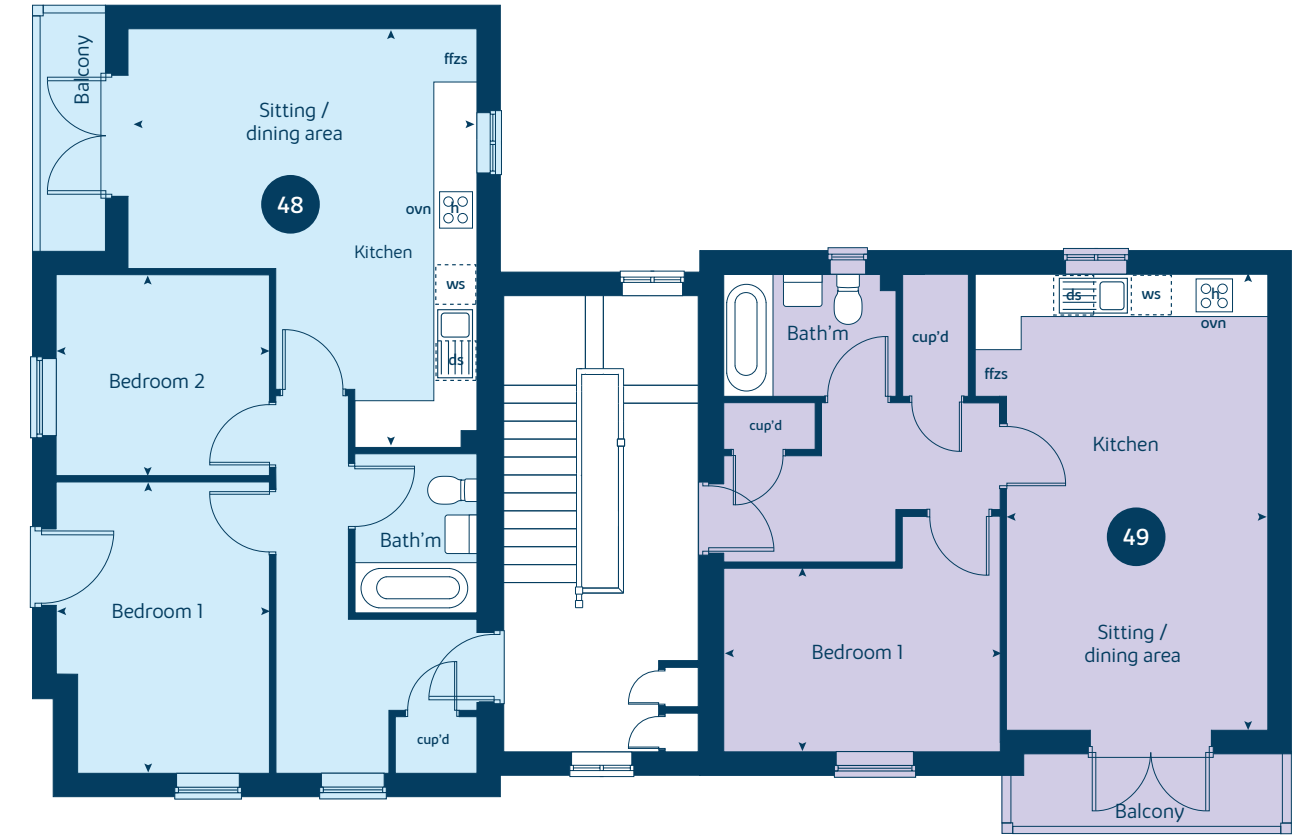
Watling Manor

1 and 2 bedroom apartments

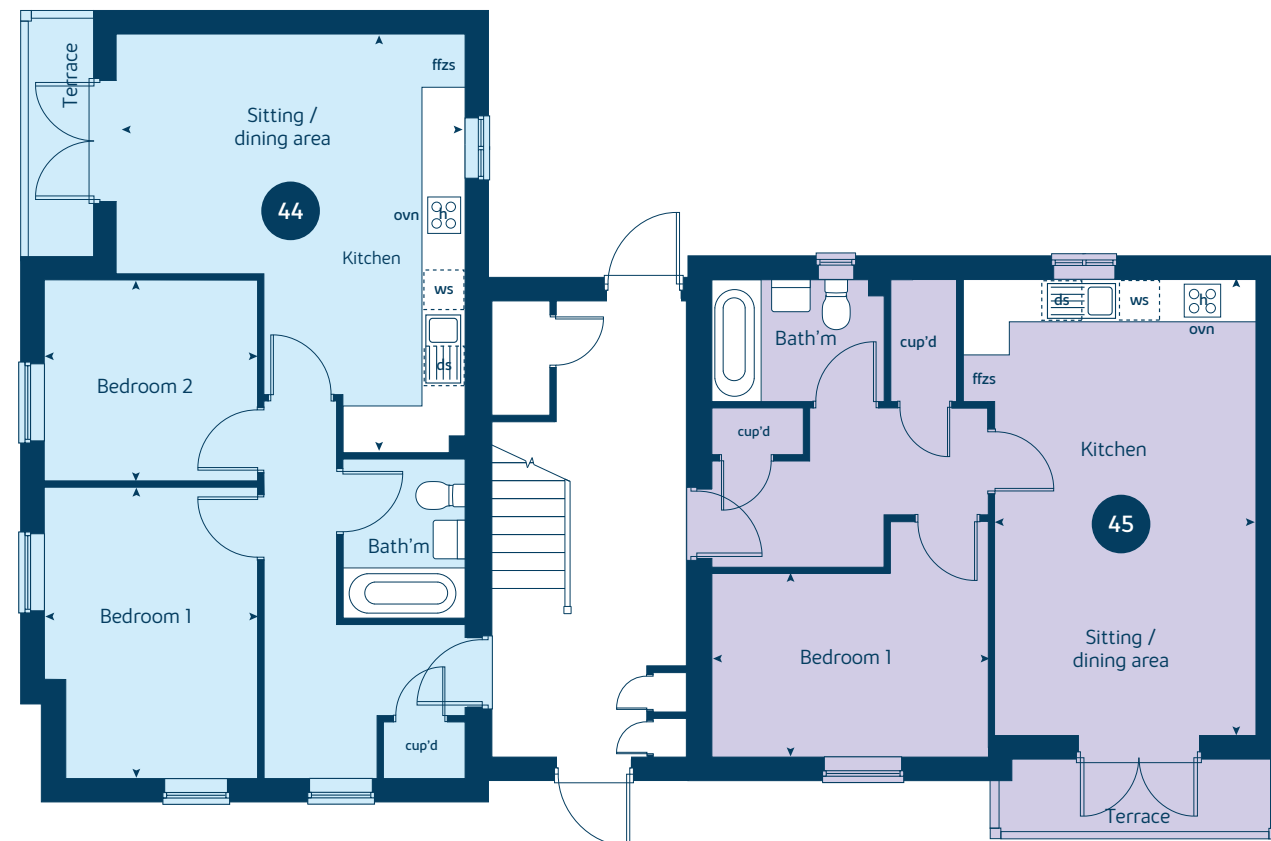
First floor



Second floor



Ground floor



● Apartments 45, 47 and 49

	metres	feet / inches
Kitchen / sitting / dining area	6.34 x 3.62	20' 10" x 11' 11"
Bedroom 1	3.85 x 2.54	12' 8" x 8' 4"

● Apartments 44, 46 and 48

	metres	feet / inches
Kitchen / sitting / dining area	5.77 x 4.85	18' 11" x 15' 11"
Bedroom 1	4.04 x 2.95	13' 3" x 9' 8"
Bedroom 2	2.95 x 2.78	9' 8" x 9' 1"

Watling Manor | MMJKL |

This floorplan has been produced for illustrative purposes only. Room sizes shown are between arrow points as indicated on plan. The dimensions have tolerances of + or -50mm and should not be used other than for general guidance. If specific dimensions are required, enquiries should be made to the sales consultant.

ovn	oven	ffzs	fridge freezer space
h	hob	cup'd	cupboard
ws	washing machine space	◀ ▶	measuring points



The Eila

1 bedroom home

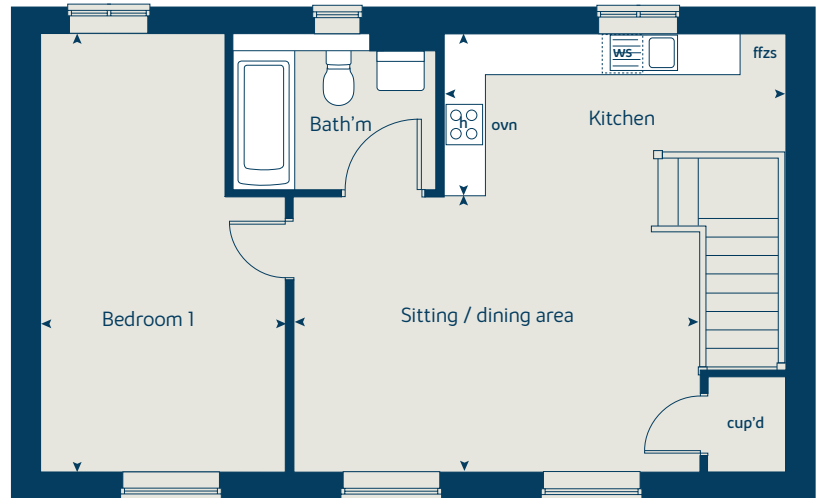
bovishomes.co.uk

**Bovis
Homes** 

The Eila

1 bedroom home

First floor



First floor	metres	feet / inches
Kitchen	3.82 x 1.97	12' 7" x 6' 6"
Sitting / dining area	4.54 x 3.34	14' 11" x 11' 0"
Bedroom 1	5.34 x 2.73	17' 6" x 9' 0"

The Eila | XF201 V1 MMJKL |

This floorplan has been produced for illustrative purposes only. Room sizes shown are between arrow points as indicated on plan. The dimensions have tolerances of + or -50mm and should not be used other than for general guidance. If specific dimensions are required, enquiries should be made to the sales consultant.

ovn	oven	ffzs	fridge freezer space
h	hob	cup'd	cupboard
ws	washing machine space	◀ ▶	measuring points

Please refer to the sales consultant for specific plot details as the illustrations shown are computer generated impressions of how the property may look so are indicative only. External details or finishes may vary on individual plots and homes may be built in either detached or attached styles depending on the development layout. Exact specifications, window styles and whether a property is left or right handed may differ from plot to plot.

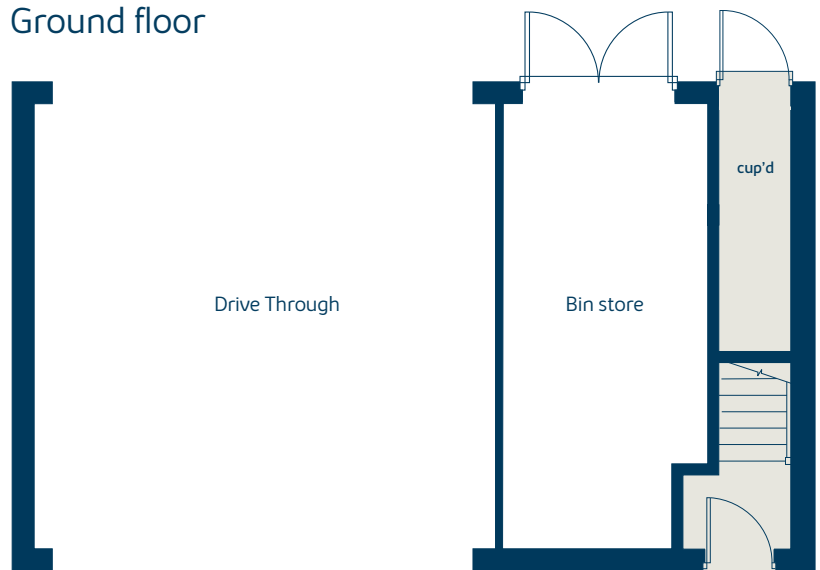
The floorplans shown are not to scale. Measurements are based on the original drawings. Slight variations may occur during construction.

Produced by the Vistry Group Design Studio.

When you have finished with this leaflet please recycle it.

MMJKL DS05561 / 05.23

Ground floor





The Sylvie

2 bedroom home

bovishomes.co.uk

**Bovis
Homes** 

The Sylvie

2 bedroom home

Ground floor	metres	feet/inches
Kitchen	4.47 x 3.04	14' 8" x 10' 0"
Sitting / dining area	5.27 x 2.95	17' 4" x 9' 8"

First floor

Bedroom 1	4.47 x 2.82	14' 8" x 9' 3"
Bedroom 2	4.67 x 2.16	15' 4" x 7' 1"

The Sylvie | SH203 & SH203V2 MMJKL |

This floorplan has been produced for illustrative purposes only. Room sizes shown are between arrow points as indicated on plan. The dimensions have tolerances of + or -50mm and should not be used other than for general guidance. If specific dimensions are required, enquiries should be made to the sales consultant.

- ① Alternative layout applies to plots 50 and 51 only. Please see sales consultant for further details.

ovn	oven	ffzs	fridge freezer space
h	hob	cup'd	cupboard
ds	dishwasher space	◀ ▶	measuring points
ws	washing machine space		

Please refer to the sales consultant for specific plot details as the illustrations shown are computer generated impressions of how the property may look so are indicative only. External details or finishes may vary on individual plots and homes may be built in either detached or attached styles depending on the development layout. Exact specifications, window styles and whether a property is left or right handed may differ from plot to plot.

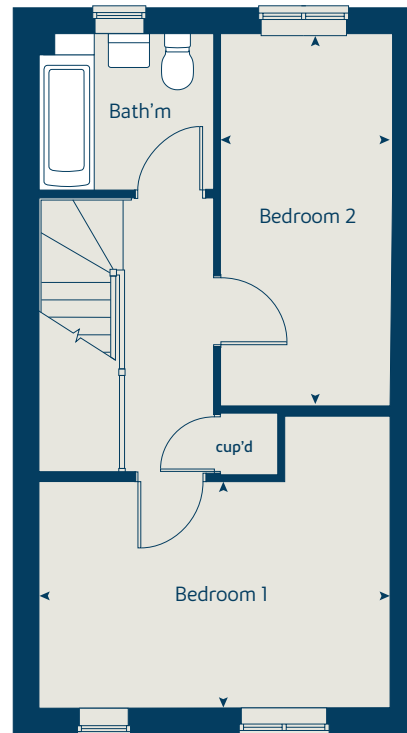
The floorplans shown are not to scale. Measurements are based on the original drawings. Slight variations may occur during construction.

Produced by the Vistry Group Design Studio.

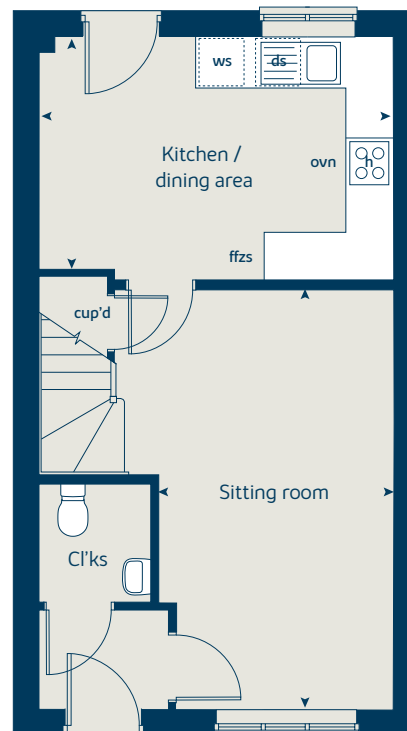
When you have finished with this leaflet please recycle it.

MMJKL DS04303 / 11.22

First floor



Ground floor





The Hawthorn

2 bedroom home

bovishomes.co.uk

**Bovis
Homes** 

The Hawthorn

2 bedroom home

Ground floor	metres	feet / inches
Kitchen	3.73 x 2.92	12' 2" x 9' 6"
Sitting / dining area	4.07 x 3.87	13' 4" x 12' 8"

First floor

Bedroom 1	4.07 x 2.67	13' 4" x 8' 9"
Bedroom 2	4.07 x 2.80	13' 4" x 9' 2"

The Hawthorn | X203 MMJKL |

This floorplan has been produced for illustrative purposes only. Room sizes shown are between arrow points as indicated on plan. The dimensions have tolerances of + or -50mm and should not be used other than for general guidance. If specific dimensions are required, enquiries should be made to the sales consultant.

* Windows apply to plots 78 and 83 only. Please see sales consultant for further details.

ovn	oven	ffzs	fridge freezer space
h	hob	cup'd	cupboard
ds	dishwasher space	◀ ▶	measuring points
ws	washing machine space		

Please refer to the sales consultant for specific plot details as the illustrations shown are computer generated impressions of how the property may look so are indicative only. External details or finishes may vary on individual plots and homes may be built in either detached or attached styles depending on the development layout. Exact specifications, window styles and whether a property is left or right handed may differ from plot to plot.

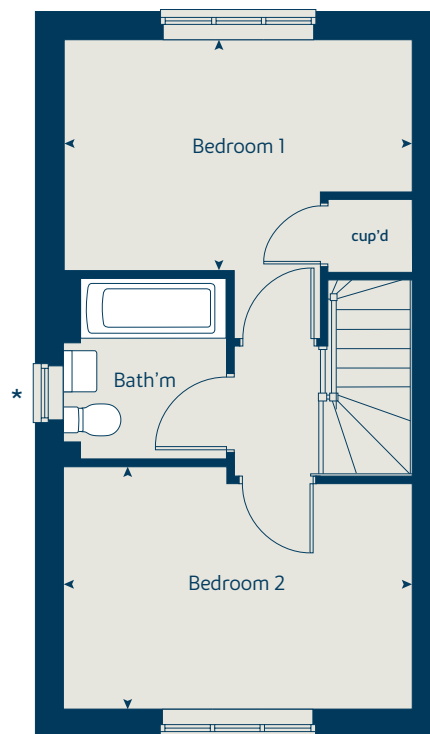
The floorplans shown are not to scale. Measurements are based on the original drawings. Slight variations may occur during construction.

Produced by the Vistry Group Design Studio.

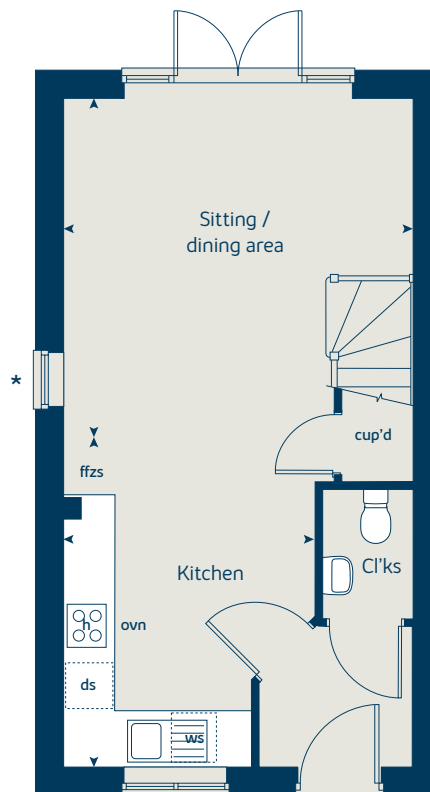
When you have finished with this leaflet please recycle it.

MMJKL DS05561 / 05.23

First floor



Ground floor





The Hazel

3 bedroom home

bovishomes.co.uk

**Bovis
Homes** 

The Hazel

3 bedroom home

Ground floor	metres	feet / inches
Kitchen / dining room	5.19 x 2.98	17' 0" x 9' 8"
Sitting room	4.15 x 3.66	13' 8" x 12' 0"

First floor

Bedroom 1	3.52 x 3.27	11' 7" x 10' 9"
Bedroom 2	2.93 x 2.71	9' 8" x 8' 11"
Bedroom 3	3.47 x 2.14	11' 5" x 7' 0"

The Hazel | X305 & X305V2 MMJKL |

This floorplan has been produced for illustrative purposes only. Room sizes shown are between arrow points as indicated on plan. The dimensions have tolerances of + or -50mm and should not be used other than for general guidance. If specific dimensions are required, enquiries should be made to the sales consultant.

* Window applicable to plots 13, 103, 105, 114, 115, 117, 120, 146, 151, 211, 212, 213, 214 and 219 only. Please see sales consultant for further details.

** Window applicable to plots 13, 103, 105, 114, 115, 117, 120, 146, 151, 211, 212, 213, 214 and 219 only. Please see sales consultant for further details.

① Alternative layout applies to plots 13, 80, 81, 101, 102, 114, 115, 117, 118, 119, 120, 146, 147, 148, 149, 150, 151, 161, 163, 164, 171, 172, 173, 211, 212, 213, 214, 215, 216, 217, 218 and 219 only. Please see sales consultant for further details.

ovn	oven	ffzs	fridge freezer space
h	hob	cup'd	cupboard
ds	dishwasher space	◀ ▶	measuring points
ws	washing machine space		

Please refer to the sales consultant for specific plot details as the illustrations shown are computer generated impressions of how the property may look so are indicative only. External details or finishes may vary on individual plots and homes may be built in either detached or attached styles depending on the development layout. Exact specifications, window styles and whether a property is left or right handed may differ from plot to plot.

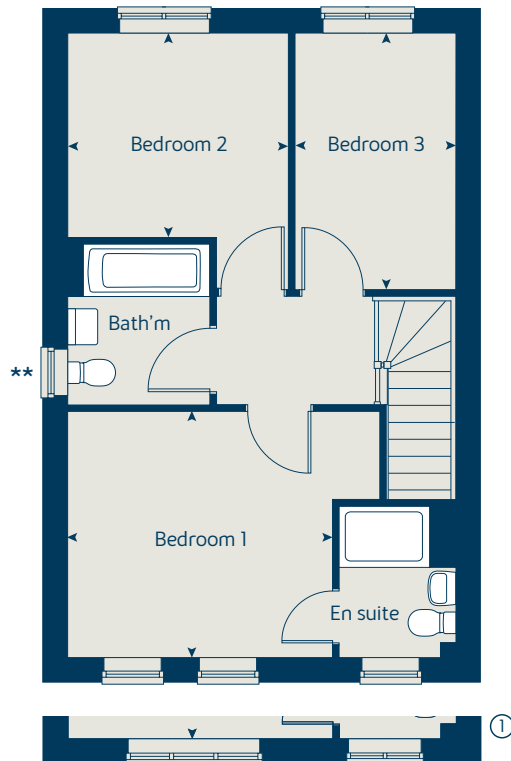
The floorplans shown are not to scale. Measurements are based on the original drawings. Slight variations may occur during construction.

Produced by the Vistry Group Design Studio.

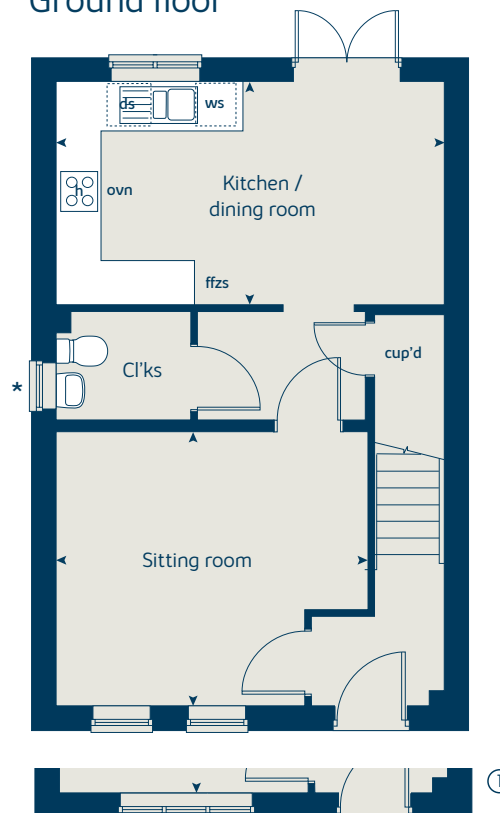
When you have finished with this leaflet please recycle it.

MMJKL DS05561 / 05.23

First floor



Ground floor





The Spruce

3 bedroom home

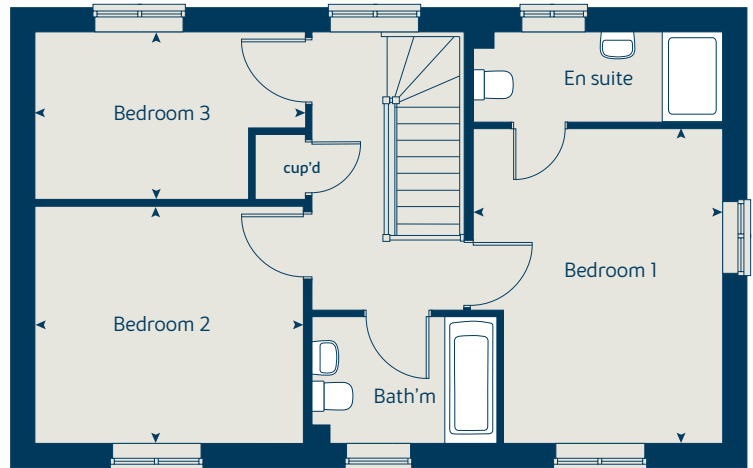
bovishomes.co.uk

**Bovis
Homes** 

The Spruce

3 bedroom home

First floor



Ground floor	metres	feet / inches
Kitchen / dining area	5.52 x 3.54	18' 2" x 11' 8"
Sitting room	5.52 x 3.32	18' 2" x 10' 10"

First floor

Bedroom 1	4.22 x 3.34	13' 10" x 11' 0"
Bedroom 2	3.58 x 3.17	11' 9" x 10' 5"
Bedroom 3	3.62 x 2.24	11' 11" x 7' 4"

The Spruce | X307 (IF) V4&V5 MMJKL |

This floorplan has been produced for illustrative purposes only. Room sizes shown are between arrow points as indicated on plan. The dimensions have tolerances of + or -50mm and should not be used other than for general guidance. If specific dimensions are required, enquiries should be made to the sales consultant.

* Window applies to plot 113 only. Please see sales consultant for further details.

ovn	oven	ffzs	fridge freezer space
h	hob	cup'd	cupboard
ds	dishwasher space	◀ ▶	measuring points
ws	washing machine space		

Please refer to the sales consultant for specific plot details as the illustrations shown are computer generated impressions of how the property may look so are indicative only. External details or finishes may vary on individual plots and homes may be built in either detached or attached styles depending on the development layout. Exact specifications, window styles and whether a property is left or right handed may differ from plot to plot.

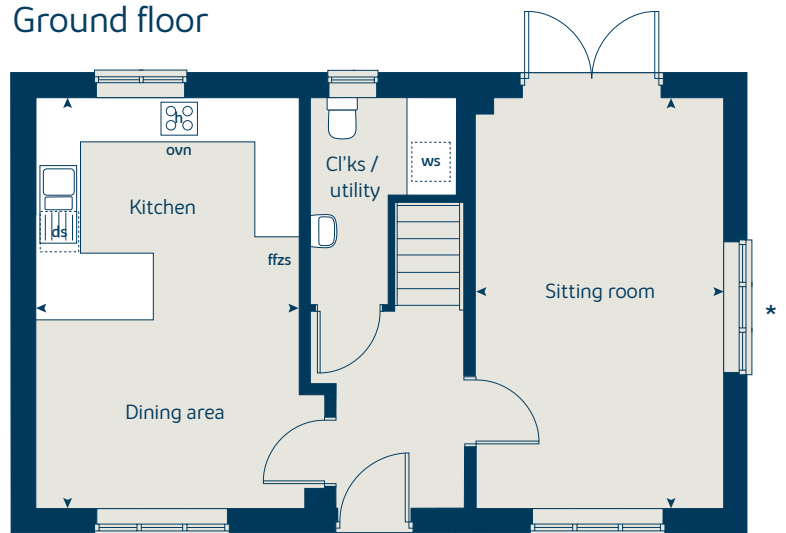
The floorplans shown are not to scale. Measurements are based on the original drawings. Slight variations may occur during construction.

Produced by the Vistry Group Design Studio.

When you have finished with this leaflet please recycle it.

MMJKL DS05561 / 05.23

Ground floor





The Spruce II

3 bedroom home

bovishomes.co.uk

**Bovis
Homes** 

The Spruce II

3 bedroom home

Ground floor	metres	feet / inches
Kitchen / dining area	5.52 x 3.54	18' 2" x 11' 8"
Sitting room	5.52 x 3.32	18' 2" x 10' 10"

First floor

Bedroom 1	4.22 x 3.34	13' 10" x 11' 0"
Bedroom 2	3.58 x 3.18	11' 9" x 10' 5"
Bedroom 3	3.62 x 2.24	11' 11" x 7' 4"

The Spruce II | X307 (IF) V1&V2 MMJKL |

This floorplan has been produced for illustrative purposes only. Room sizes shown are between arrow points as indicated on plan. The dimensions have tolerances of + or -50mm and should not be used other than for general guidance. If specific dimensions are required, enquiries should be made to the sales consultant.

- + Window to plots 16 and 17 only. Please see sales consultant for further details.
- * Window to plots 160 and 162 only. Please see sales consultant for further details.
- ** Window omitted to plots 97, 160, 162 and 184 only. Please see sales consultant for further details.
- *** Window omitted to plots 14, 160 and 162 only. Please see sales consultant for further details.
- ① Bay window applies to plots 9, 14, 39, 42, 52, 63, 92, 97, 104, 108, 116, 121, 126, 145, 155, 156, 166, 184 and 209 only. Please see sales consultant for further details.
- ② Alternative layout to plots 16 and 17 only. Please see sales consultant for further details.
- ③ Alternative layout to plots 39, 92, 97, 121, 126 and 184 only. Please see sales consultant for further details.

ovn	oven	ffzs	fridge freezer space
h	hob	cup'd	cupboard
ds	dishwasher space	◀ ▶	measuring points
ws	washing machine space		

Please refer to the sales consultant for specific plot details as the illustrations shown are computer generated impressions of how the property may look so are indicative only. External details or finishes may vary on individual plots and homes may be built in either detached or attached styles depending on the development layout. Exact specifications, window styles and whether a property is left or right handed may differ from plot to plot.

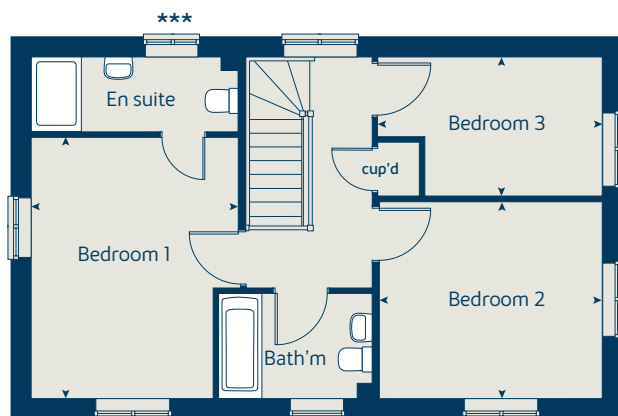
The floorplans shown are not to scale. Measurements are based on the original drawings. Slight variations may occur during construction.

Produced by the Vistry Group Design Studio.

When you have finished with this leaflet please recycle it.

MMJKL DS02520 / 06.22

First floor



Ground floor





The Spruce II

3 bedroom home

bovishomes.co.uk

**Bovis
Homes** 

The Spruce II

3 bedroom home

Ground floor	metres	feet / inches
Kitchen / dining area	5.52 x 3.54	18' 2" x 11' 8"
Sitting room	5.52 x 3.32	18' 2" x 10' 10"

First floor

Bedroom 1	4.22 x 3.34	13' 10" x 11' 0"
Bedroom 2	3.58 x 3.18	11' 9" x 10' 5"
Bedroom 3	3.62 x 2.24	11' 11" x 7' 4"

The Spruce II | X307 (IF) V3, V6 & V7 MMJKL |

This floorplan has been produced for illustrative purposes only. Room sizes shown are between arrow points as indicated on plan. The dimensions have tolerances of + or -50mm and should not be used other than for general guidance. If specific dimensions are required, enquiries should be made to the sales consultant.

- + Window to plots 16 and 17 only. Please see sales consultant for further details.
- * Window to plots 160 and 162 only. Please see sales consultant for further details.
- ** Window omitted to plots 97, 160, 162 and 184 only. Please see sales consultant for further details.
- *** Window omitted to plots 14, 160 and 162 only. Please see sales consultant for further details.
- ① Bay window applies to plots 9, 14, 39, 42, 52, 63, 92, 97, 104, 108, 116, 121, 126, 145, 155, 156, 166, 184 and 209 only. Please see sales consultant for further details.
- ② Alternative layout to plots 16 and 17 only. Please see sales consultant for further details.
- ③ Alternative layout to plots 39, 92, 97, 121, 126 and 184 only. Please see sales consultant for further details.

ovn	oven	ffzs	fridge freezer space
h	hob	cup'd	cupboard
ds	dishwasher space	◀ ▶	measuring points
ws	washing machine space		

Please refer to the sales consultant for specific plot details as the illustrations shown are computer generated impressions of how the property may look so are indicative only. External details or finishes may vary on individual plots and homes may be built in either detached or attached styles depending on the development layout. Exact specifications, window styles and whether a property is left or right handed may differ from plot to plot.

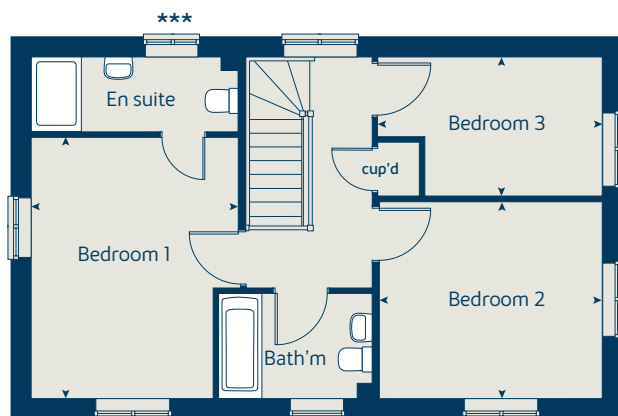
The floorplans shown are not to scale. Measurements are based on the original drawings. Slight variations may occur during construction.

Produced by the Vistry Group Design Studio.

When you have finished with this leaflet please recycle it.

MMJKL DS05561 / 05.23

First floor



Ground floor





The Cypress

3 bedroom home

bovishomes.co.uk

**Bovis
Homes** 

The Cypress

3 bedroom home

Ground floor	metres	feet / inches
Kitchen / dining area	5.52 x 3.12	18' 1" x 10' 2"
Sitting room	4.33 x 3.40	14' 2" x 11' 1"

First floor

Bedroom 1	4.09 x 3.28	13' 5" x 10' 9"
Bedroom 2	3.28 x 2.82	10' 9" x 9' 3"
Bedroom 3	3.54 x 2.16	11' 7" x 7' 1"

The Cypress | X308 (IF) 01 MMJKL |

This floorplan has been produced for illustrative purposes only. Room sizes shown are between arrow points as indicated on plan. The dimensions have tolerances of + or -50mm and should not be used other than for general guidance. If specific dimensions are required, enquiries should be made to the sales consultant.

- * Window applies to plots 11, 64, 94, 129, 188 and 201 only. Please see sales consultant for further details.
- + Door omitted to plots 62, 94, 111, 125, 157, 167, 201, 202 and 204 only. Please see sales consultant for further details.

- ① Alternative layout applies to plots 10, 11, 64, 93, 94, 122, 125, 128, 129, 130, 185, 186, 187 and 188 only. Please see sales consultant for further details.

ovn	oven	ffzs	fridge freezer space
h	hob	cup'd	cupboard
ds	dishwasher space	◀ ▶	measuring points
ws	washing machine space		

Please refer to the sales consultant for specific plot details as the illustrations shown are computer generated impressions of how the property may look so are indicative only. External details or finishes may vary on individual plots and homes may be built in either detached or attached styles depending on the development layout. Exact specifications, window styles and whether a property is left or right handed may differ from plot to plot.

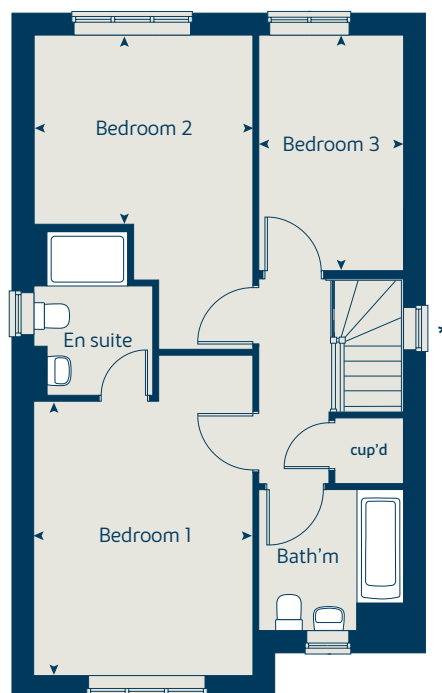
The floorplans shown are not to scale. Measurements are based on the original drawings. Slight variations may occur during construction.

Produced by the Vistry Group Design Studio.

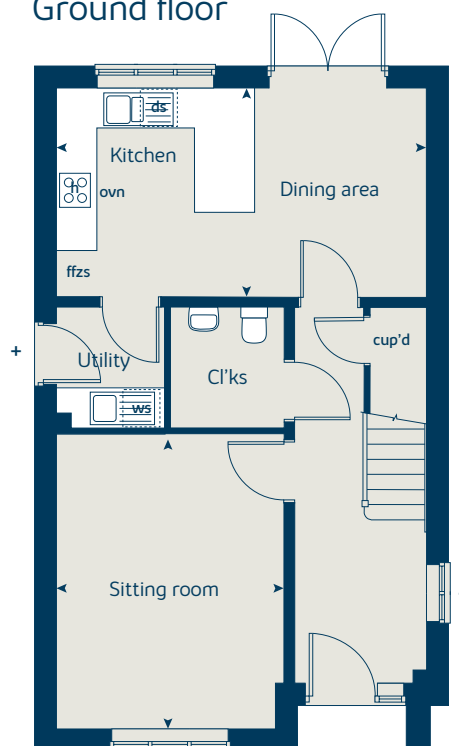
When you have finished with this leaflet please recycle it.

MMJKL DS04873 / 01.23

First floor



Ground floor





The Cypress

3 bedroom home

bovishomes.co.uk

**Bovis
Homes** 

The Cypress

3 bedroom home

Ground floor	metres	feet / inches
Kitchen / dining area	5.52 x 3.12	18' 1" x 10' 2"
Sitting room	4.33 x 3.40	14' 2" x 11' 1"

First floor

Bedroom 1	4.09 x 3.28	13' 5" x 10' 9"
Bedroom 2	3.28 x 2.82	10' 9" x 9' 3"
Bedroom 3	3.54 x 2.16	11' 7" x 7' 1"

The Cypress | X308 (IF) 01 MMJKL |

This floorplan has been produced for illustrative purposes only. Room sizes shown are between arrow points as indicated on plan. The dimensions have tolerances of + or -50mm and should not be used other than for general guidance. If specific dimensions are required, enquiries should be made to the sales consultant.

- * Window applies to plots 11, 64, 94, 129, 188 and 201 only. Please see sales consultant for further details.
- + Door omitted to plots 62, 94, 111, 125, 157, 167, 201, 202 and 204 only. Please see sales consultant for further details.

- ① Alternative layout applies to plots 10, 11, 64, 93, 94, 122, 125, 128, 129, 130, 185, 186, 187 and 188 only. Please see sales consultant for further details.

ovn	oven	ffzs	fridge freezer space
h	hob	cup'd	cupboard
ds	dishwasher space	◀ ▶	measuring points
ws	washing machine space		

Please refer to the sales consultant for specific plot details as the illustrations shown are computer generated impressions of how the property may look so are indicative only. External details or finishes may vary on individual plots and homes may be built in either detached or attached styles depending on the development layout. Exact specifications, window styles and whether a property is left or right handed may differ from plot to plot.

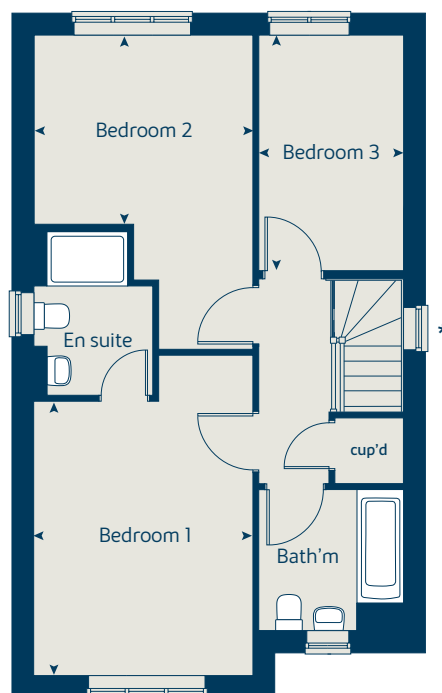
The floorplans shown are not to scale. Measurements are based on the original drawings. Slight variations may occur during construction.

Produced by the Vistry Group Design Studio.

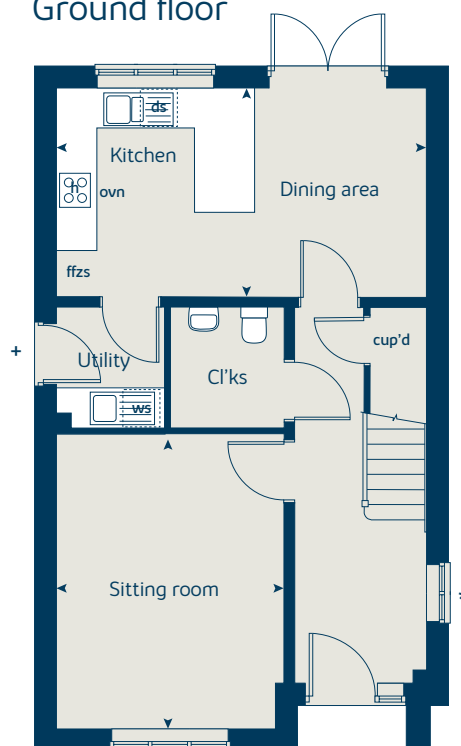
When you have finished with this leaflet please recycle it.

MMJKL DS04873 / 01.23

First floor



Ground floor





The Magnolia

3 bedroom home

bovishomes.co.uk

**Bovis
Homes** 

The Magnolia

3 bedroom home

Ground floor	metres	feet / inches
Kitchen / dining room	4.74 x 3.35	15' 6" x 11' 0"
Sitting room	3.70 x 3.70	12' 2" x 12' 2"

First floor

Bedroom 1	3.05 x 2.54	10' 0" x 8' 4"
Bedroom 2	2.98 x 2.54	9' 10" x 8' 4"
Bedroom 3	2.79 x 2.08	9' 2" x 6' 10"

The Magnolia | X327vt MMJKL |

This floorplan has been produced for illustrative purposes only. Room sizes shown are between arrow points as indicated on plan. The dimensions have tolerances of + or -50mm and should not be used other than for general guidance. If specific dimensions are required, enquiries should be made to the sales consultant.

* Windows omitted to plots 99 and 110 only. Please see sales consultant for further details.

① Alternative layout applies to plots 98, 99, 100, 221 and 222 only. Please see sales consultant for further details.

ovn	oven	ffzs	fridge freezer space
h	hob	ldr	larder
ds	dishwasher space	cup'd	cupboard
ws	washing machine space	◀ ▶	measuring points

Please refer to the sales consultant for specific plot details as the illustrations shown are computer generated impressions of how the property may look so are indicative only. External details or finishes may vary on individual plots and homes may be built in either detached or attached styles depending on the development layout. Exact specifications, window styles and whether a property is left or right handed may differ from plot to plot.

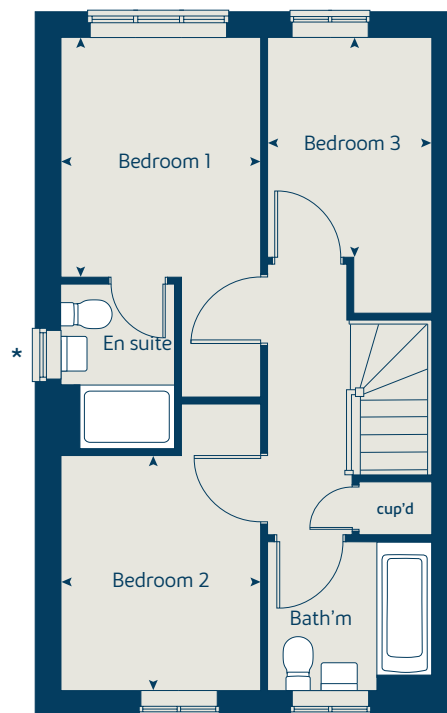
The floorplans shown are not to scale. Measurements are based on the original drawings. Slight variations may occur during construction.

Produced by the Vistry Group Design Studio.

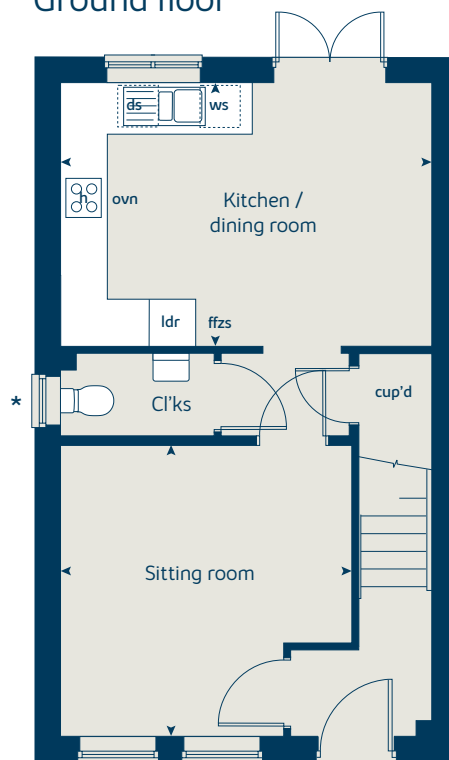
When you have finished with this leaflet please recycle it.

MMJKL DS05561 / 05.23

First floor



Ground floor



①





The Magnolia

3 bedroom home

bovishomes.co.uk

**Bovis
Homes** 

The Magnolia

3 bedroom home

Ground floor	metres	feet / inches
Kitchen / dining room	4.74 x 3.35	15' 6" x 11' 0"
Sitting room	3.70 x 3.70	12' 2" x 12' 2"

First floor

Bedroom 1	3.05 x 2.54	10' 0" x 8' 4"
Bedroom 2	2.98 x 2.54	9' 10" x 8' 4"
Bedroom 3	2.79 x 2.08	9' 2" x 6' 10"

The Magnolia | X327vt MMJKL |

This floorplan has been produced for illustrative purposes only. Room sizes shown are between arrow points as indicated on plan. The dimensions have tolerances of + or -50mm and should not be used other than for general guidance. If specific dimensions are required, enquiries should be made to the sales consultant.

* Windows omitted to plots 99 and 110 only. Please see sales consultant for further details.

① Alternative layout applies to plots 98, 99, 100, 221 and 222 only. Please see sales consultant for further details.

ovn	oven	ffzs	fridge freezer space
h	hob	ldr	larder
ds	dishwasher space	cup'd	cupboard
ws	washing machine space	◀ ▶	measuring points

Please refer to the sales consultant for specific plot details as the illustrations shown are computer generated impressions of how the property may look so are indicative only. External details or finishes may vary on individual plots and homes may be built in either detached or attached styles depending on the development layout. Exact specifications, window styles and whether a property is left or right handed may differ from plot to plot.

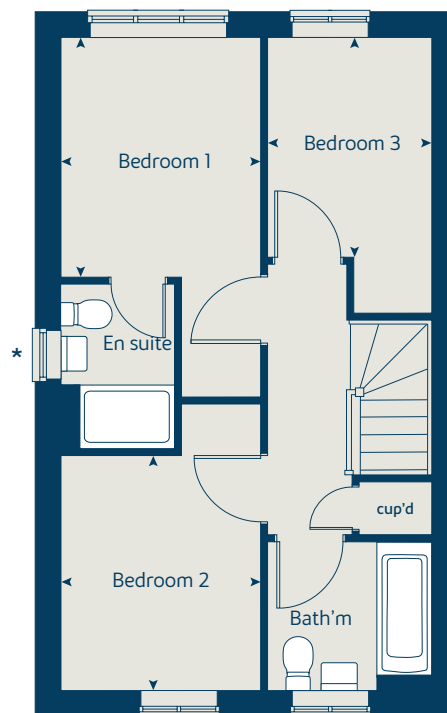
The floorplans shown are not to scale. Measurements are based on the original drawings. Slight variations may occur during construction.

Produced by the Vistry Group Design Studio.

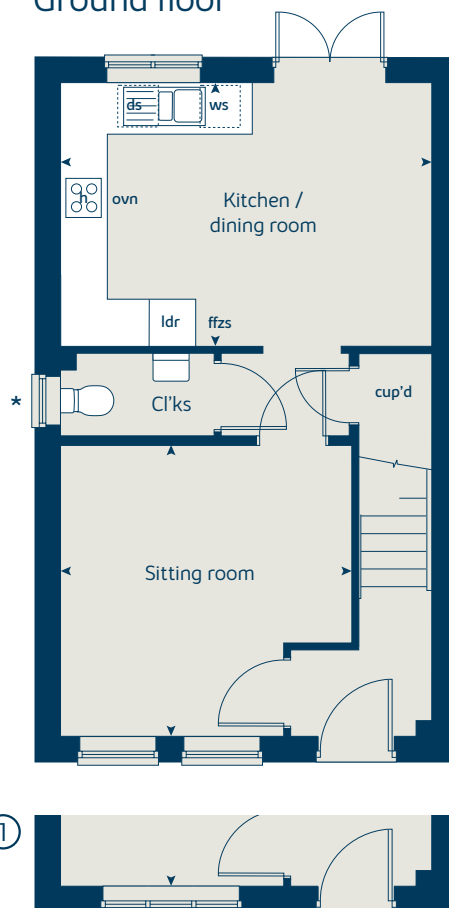
When you have finished with this leaflet please recycle it.

MMJKL DS05561 / 05.23

First floor



Ground floor





The Juniper

4 bedroom home

bovishomes.co.uk



The Juniper

4 bedroom home

Ground floor	metres	feet / inches
Kitchen / dining / family area	7.21 x 3.51	23' 7" x 11' 6"
Sitting room	4.55 x 3.04	14' 7" x 10' 0"
Study	2.34 x 1.85	7' 8" x 6' 0"

First floor	metres	feet / inches
Bedroom 1	4.66 x 3.05	15' 3" x 10' 0"
Bedroom 2	2.97 x 2.84	9' 8" x 9' 3"
Bedroom 3	3.60 x 2.38	11' 9" x 7' 9"
Bedroom 4	3.51 x 2.38	11' 6" x 7' 9"

The Juniper | X412 P4 vt MMJKL |

This floorplan has been produced for illustrative purposes only. Room sizes shown are between arrow points as indicated on plan. The dimensions have tolerances of + or -50mm and should not be used other than for general guidance. If specific dimensions are required, enquiries should be made to the sales consultant.

* Window fixed shut to plots 5, 41, 54, 60, 112 and 208. Please see sales consultant for further details.

ovn	oven	ffzr	fridge freezer
h	hob	ldr	larder
ds	dishwasher space	cup'd	cupboard
ws	washing machine space	◀ ▶	measuring points

Please refer to the sales consultant for specific plot details as the illustrations shown are computer generated impressions of how the property may look so are indicative only. External details or finishes may vary on individual plots and homes may be built in either detached or attached styles depending on the development layout. Exact specifications, window styles and whether a property is left or right handed may differ from plot to plot.

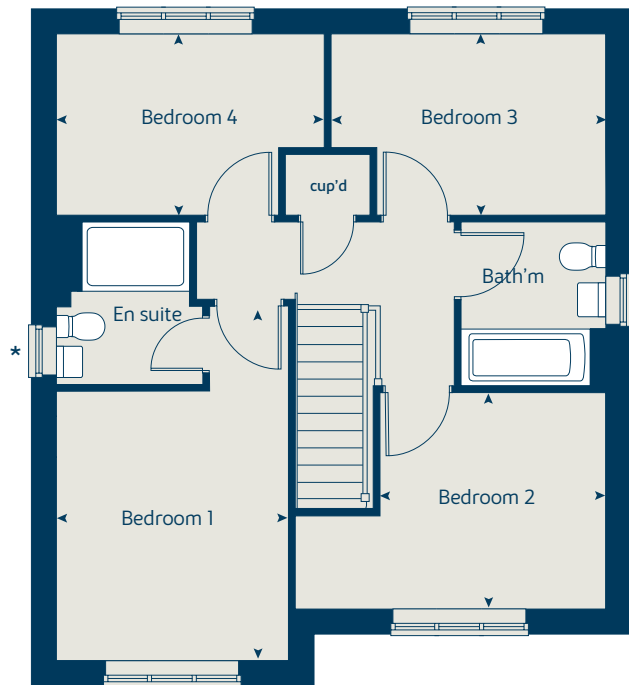
The floorplans shown are not to scale. Measurements are based on the original drawings. Slight variations may occur during construction.

Produced by the Vistry Group Design Studio.

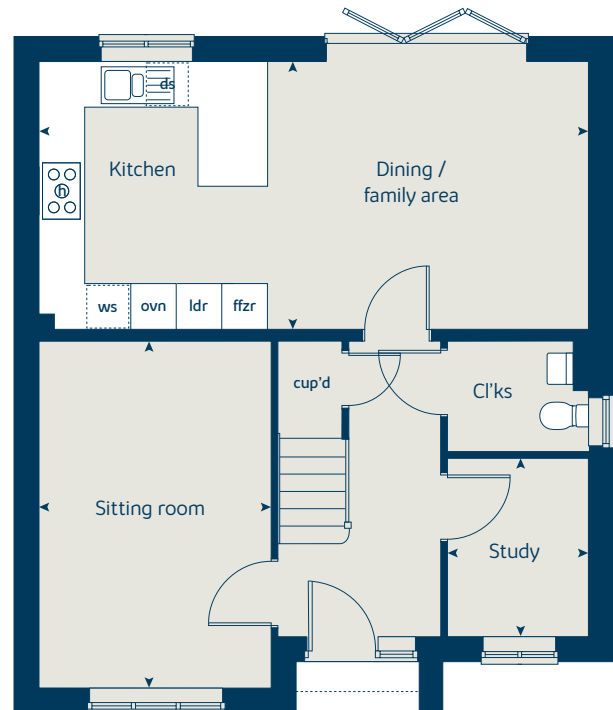
When you have finished with this leaflet please recycle it.

MMJKL DS01108 / 01.22

First floor



Ground floor





The Chestnut

4 bedroom home

bovishomes.co.uk

**Bovis
Homes** 

The Chestnut

4 bedroom home

Ground floor	metres	feet / inches
Kitchen	3.97 x 3.04	13' 0" x 10' 0"
Dining / family area	4.59 x 2.90	15' 1" x 9' 6"
Sitting room	4.95 x 3.40	16' 3" x 11' 2"
Study	3.40 x 1.80	11' 2" x 5' 11"

First floor

Bedroom 1	4.46 x 3.23	14' 8" x 10' 7"
Bedroom 2	3.42 x 3.35	11' 3" x 11' 0"
Bedroom 3	3.41 x 2.29	11' 2" x 7' 6"
Bedroom 4	3.19 x 2.34	10' 6" x 7' 8"

The Chestnut | X413 P5 MMJKL |

This floorplan has been produced for illustrative purposes only. Room sizes shown are between arrow points as indicated on plan. The dimensions have tolerances of + or -50mm and should not be used other than for general guidance. If specific dimensions are required, enquiries should be made to the sales consultant.

* Bay window applies to plot 127 only. Please see sales consultant for further details.

① Alternative window layouts apply to plot 127 only. Please see sales consultant for further details.

ovn	oven	ffzr	fridge freezer
h	hob	ldr	larder
ds	dishwasher space	cup'd	cupboard
ws	washing machine space	<>	measuring points

Please refer to the sales consultant for specific plot details as the illustrations shown are computer generated impressions of how the property may look so are indicative only. External details or finishes may vary on individual plots and homes may be built in either detached or attached styles depending on the development layout. Exact specifications, window styles and whether a property is left or right handed may differ from plot to plot.

The floorplans shown are not to scale. Measurements are based on the original drawings. Slight variations may occur during construction.

Produced by the Vistry Group Design Studio.

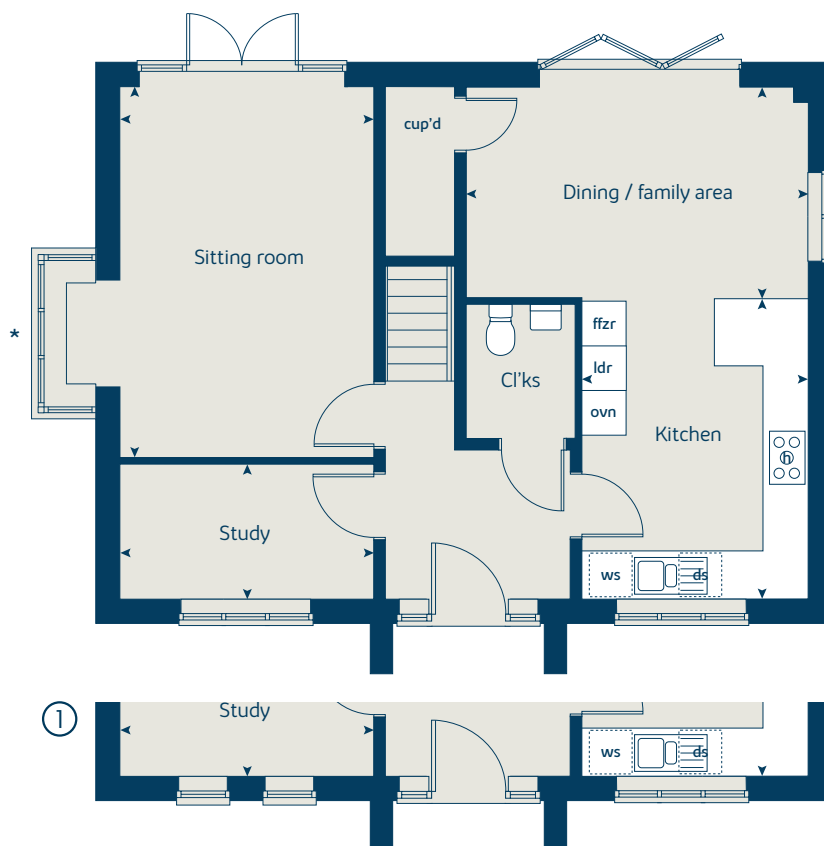
When you have finished with this leaflet please recycle it.

MMJKL DS05561 / 05.23

First floor



Ground floor





The Chestnut

4 bedroom home

bovishomes.co.uk

**Bovis
Homes** 

The Chestnut

4 bedroom home

Ground floor	metres	feet / inches
Kitchen	3.97 x 3.04	13' 0" x 10' 0"
Dining / family area	4.59 x 2.90	15' 1" x 9' 6"
Sitting room	4.95 x 3.40	16' 3" x 11' 2"
Study	3.40 x 1.80	11' 2" x 5' 11"

First floor

Bedroom 1	4.46 x 3.23	14' 8" x 10' 7"
Bedroom 2	3.42 x 3.35	11' 3" x 11' 0"
Bedroom 3	3.41 x 2.29	11' 2" x 7' 6"
Bedroom 4	3.19 x 2.34	10' 6" x 7' 8"

The Chestnut | X413 P5 MMJKL |

This floorplan has been produced for illustrative purposes only. Room sizes shown are between arrow points as indicated on plan. The dimensions have tolerances of + or -50mm and should not be used other than for general guidance. If specific dimensions are required, enquiries should be made to the sales consultant.

* Bay window applies to plot 127 only. Please see sales consultant for further details.

① Alternative window layouts apply to plot 127 only. Please see sales consultant for further details.

ovn	oven	ffzr	fridge freezer
h	hob	ldr	larder
ds	dishwasher space	cup'd	cupboard
ws	washing machine space	◀ ▶	measuring points

Please refer to the sales consultant for specific plot details as the illustrations shown are computer generated impressions of how the property may look so are indicative only. External details or finishes may vary on individual plots and homes may be built in either detached or attached styles depending on the development layout. Exact specifications, window styles and whether a property is left or right handed may differ from plot to plot.

The floorplans shown are not to scale. Measurements are based on the original drawings. Slight variations may occur during construction.

Produced by the Vistry Group Design Studio.

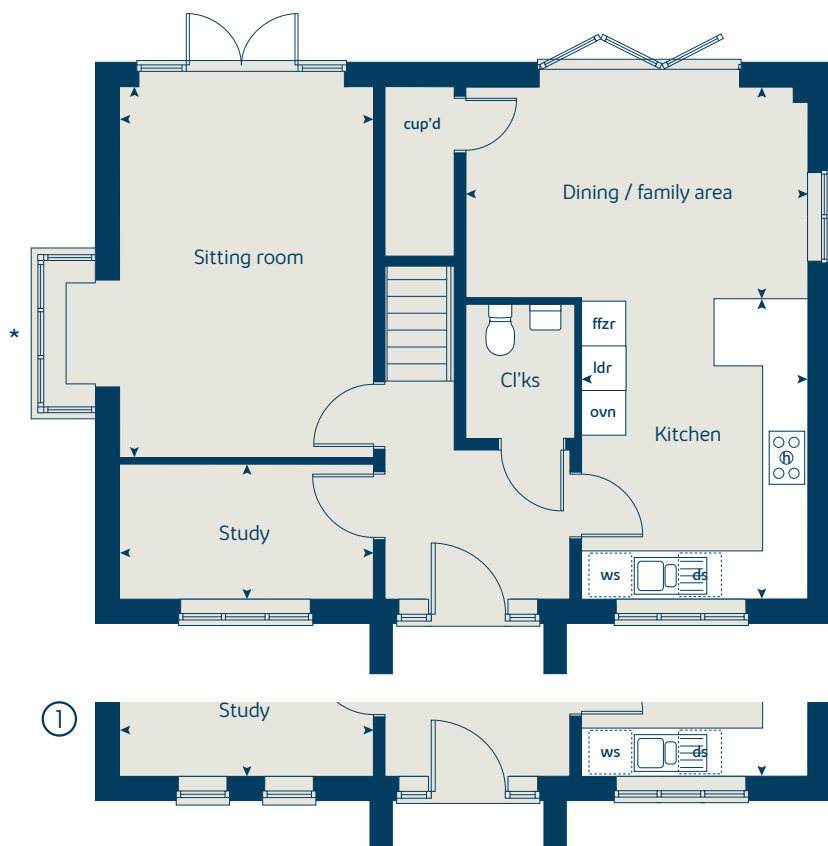
When you have finished with this leaflet please recycle it.

MMJKL DS05561 / 05.23

First floor



Ground floor





The Chestnut II

4 bedroom home

bovishomes.co.uk

**Bovis
Homes** 

The Chestnut II

4 bedroom home

Ground floor	metres	feet / inches
Kitchen	3.97 x 3.04	13' 0" x 10' 0"
Dining / family area	4.59 x 2.90	15' 1" x 9' 6"
Sitting room	4.95 x 3.40	16' 3" x 11' 2"
Study	3.40 x 1.80	11' 1" x 5' 11"

First floor

Bedroom 1	4.46 x 3.23	14' 8" x 10' 7"
Bedroom 2	3.42 x 3.35	11' 3" x 11' 0"
Bedroom 3	3.41 x 2.29	11' 2" x 7' 6"
Bedroom 4	3.19 x 2.34	10' 6" x 7' 8"

The Chestnut II | X413 V4 MMJKL |

This floorplan has been produced for illustrative purposes only. Room sizes shown are between arrow points as indicated on plan. The dimensions have tolerances of + or -50mm and should not be used other than for general guidance. If specific dimensions are required, enquiries should be made to the sales consultant.

* Window omitted to plots 3, 152 and 168 only. Please see sales consultant for further details.

① Alternative layout applies to plots 3, 152 and 168 only. Please see sales consultant for further details.

ovn	oven	ffzr	fridge freezer
h	hob	ldr	larder
ds	dishwasher space	cup'd	cupboard
ws	washing machine space	◀ ▶	measuring points

Please refer to the sales consultant for specific plot details as the illustrations shown are computer generated impressions of how the property may look so are indicative only. External details or finishes may vary on individual plots and homes may be built in either detached or attached styles depending on the development layout. Exact specifications, window styles and whether a property is left or right handed may differ from plot to plot.

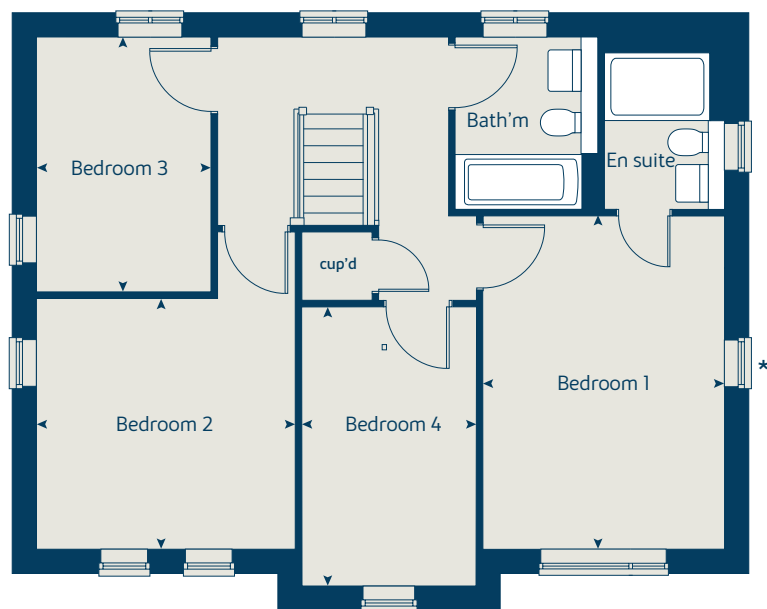
The floorplans shown are not to scale. Measurements are based on the original drawings. Slight variations may occur during construction.

Produced by the Vistry Group Design Studio.

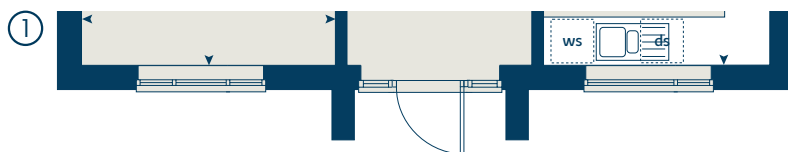
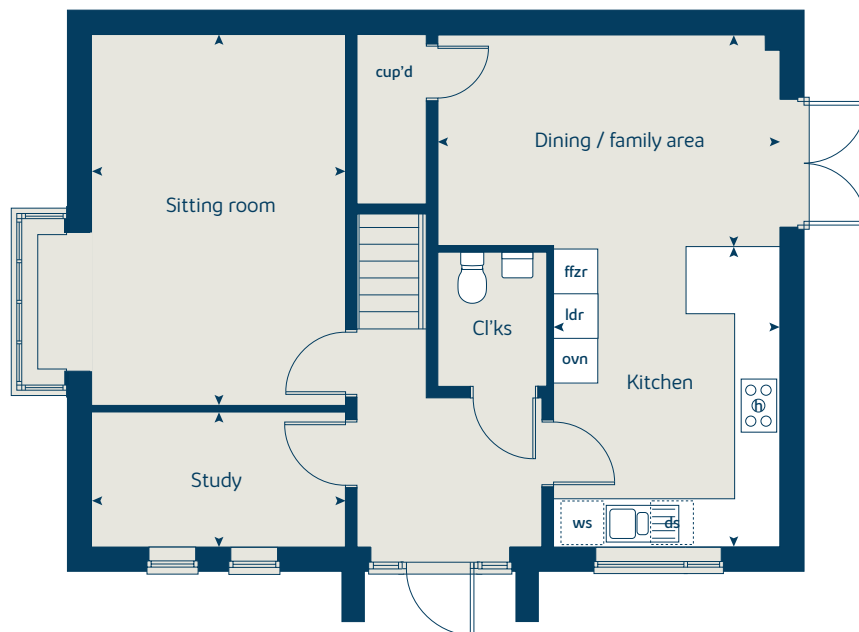
When you have finished with this leaflet please recycle it.

MMJKL DS02671 / 06.22

First floor



Ground floor





The Chestnut II

4 bedroom home

bovishomes.co.uk

**Bovis
Homes** 

The Chestnut II

4 bedroom home

Ground floor	metres	feet / inches
Kitchen	3.97 x 3.04	13' 0" x 10' 0"
Dining / family area	4.59 x 2.90	15' 1" x 9' 6"
Sitting room	4.95 x 3.40	16' 3" x 11' 2"
Study	3.40 x 1.80	11' 1" x 5' 11"

First floor

Bedroom 1	4.46 x 3.23	14' 8" x 10' 7"
Bedroom 2	3.42 x 3.35	11' 3" x 11' 0"
Bedroom 3	3.41 x 2.29	11' 2" x 7' 6"
Bedroom 4	3.19 x 2.34	10' 6" x 7' 8"

The Chestnut II | X413 V4 MMJKL |

This floorplan has been produced for illustrative purposes only. Room sizes shown are between arrow points as indicated on plan. The dimensions have tolerances of + or -50mm and should not be used other than for general guidance. If specific dimensions are required, enquiries should be made to the sales consultant.

* Window omitted to plots 3, 152 and 168 only. Please see sales consultant for further details.

① Alternative layout applies to plots 3, 152 and 168 only. Please see sales consultant for further details.

ovn	oven	ffzr	fridge freezer
h	hob	ldr	larder
ds	dishwasher space	cup'd	cupboard
ws	washing machine space	< >	measuring points

Please refer to the sales consultant for specific plot details as the illustrations shown are computer generated impressions of how the property may look so are indicative only. External details or finishes may vary on individual plots and homes may be built in either detached or attached styles depending on the development layout. Exact specifications, window styles and whether a property is left or right handed may differ from plot to plot.

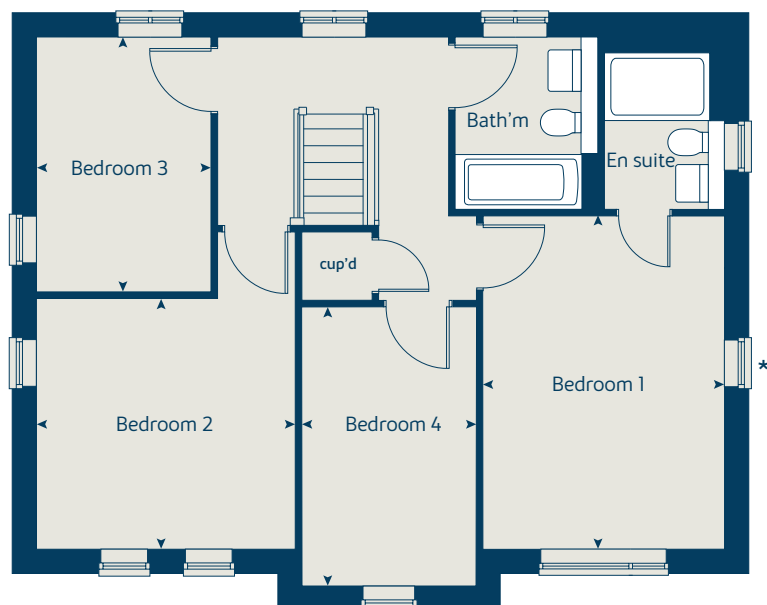
The floorplans shown are not to scale. Measurements are based on the original drawings. Slight variations may occur during construction.

Produced by the Vistry Group Design Studio.

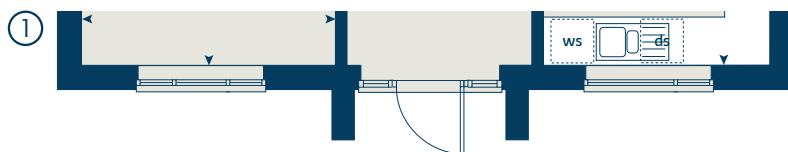
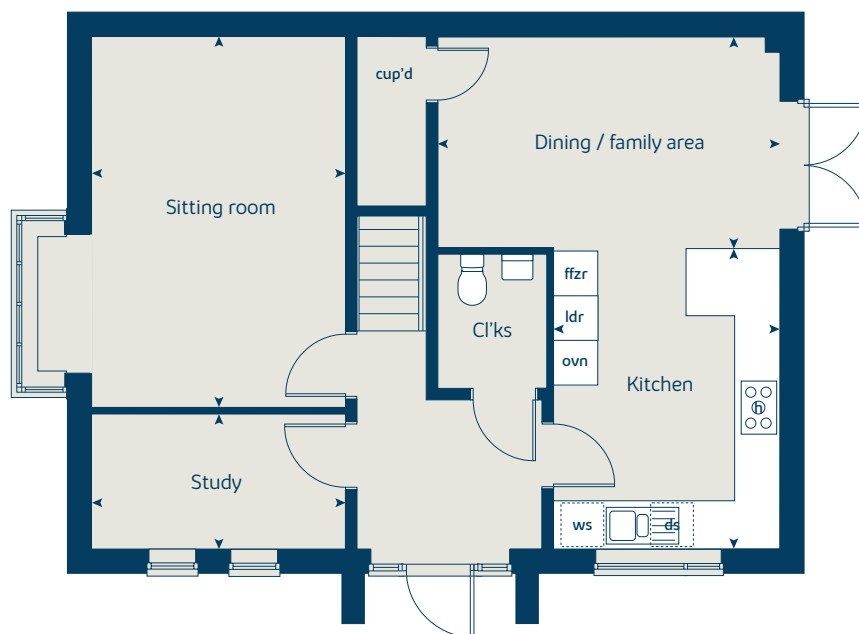
When you have finished with this leaflet please recycle it.

MMJKL DS02671 / 06.22

First floor



Ground floor





The Aspen

4 bedroom home

bovishomes.co.uk

**Bovis
Homes** 

The Aspen

4 bedroom home

Ground floor	metres	feet / inches
Kitchen / dining area	7.77 x 3.37	25' 6" x 11' 0"
Sitting room	5.04 x 3.39	16' 6" x 11' 1"
Study	2.01 x 2.01	6' 7" x 6' 7"

First floor

Bedroom 1	4.50 x 3.80	14' 9" x 12' 6"
Bedroom 2	3.86 x 3.09	12' 8" x 10' 2"
Bedroom 3	4.06 x 2.41	13' 4" x 7' 11"
Bedroom 4	3.61 x 2.45	11' 10" x 8' 0"

The Aspen | X414 (IF) 01 vt MMJKL |

This floorplan has been produced for illustrative purposes only. Room sizes shown are between arrow points as indicated on plan. The dimensions have tolerances of + or -50mm and should not be used other than for general guidance. If specific dimensions are required, enquiries should be made to the sales consultant.

* Window applies to plot 18 only. Please see sales consultant for further details.

** Window is fixed shut. Please see sales consultant for further details.

ovn	oven	ldr	larder
h	hob	ffzr	fridge freezer
ds	dishwasher space	cup'd	cupboard
ws	washing machine space	◀ ▶	measuring points

Please refer to the sales consultant for specific plot details as the illustrations shown are computer generated impressions of how the property may look so are indicative only. External details or finishes may vary on individual plots and homes may be built in either detached or attached styles depending on the development layout. Exact specifications, window styles and whether a property is left or right handed may differ from plot to plot.

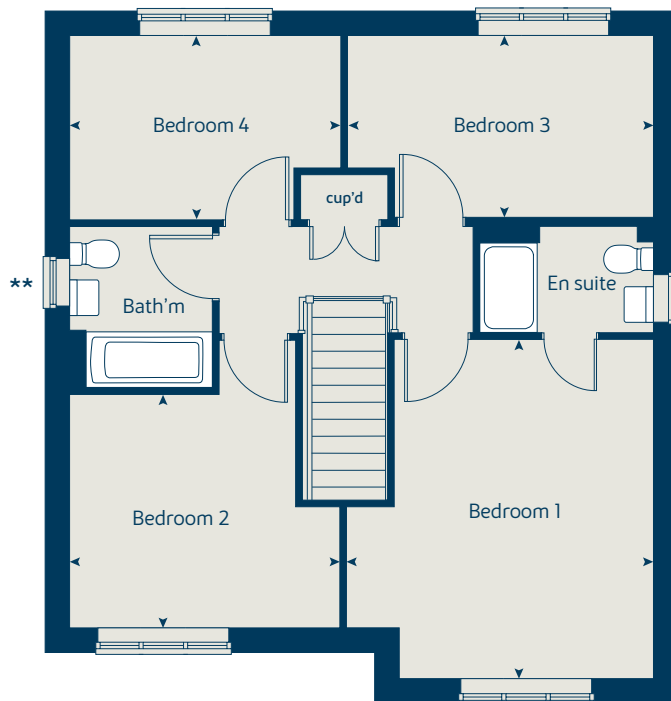
The floorplans shown are not to scale. Measurements are based on the original drawings. Slight variations may occur during construction.

Produced by the Vistry Group Design Studio.

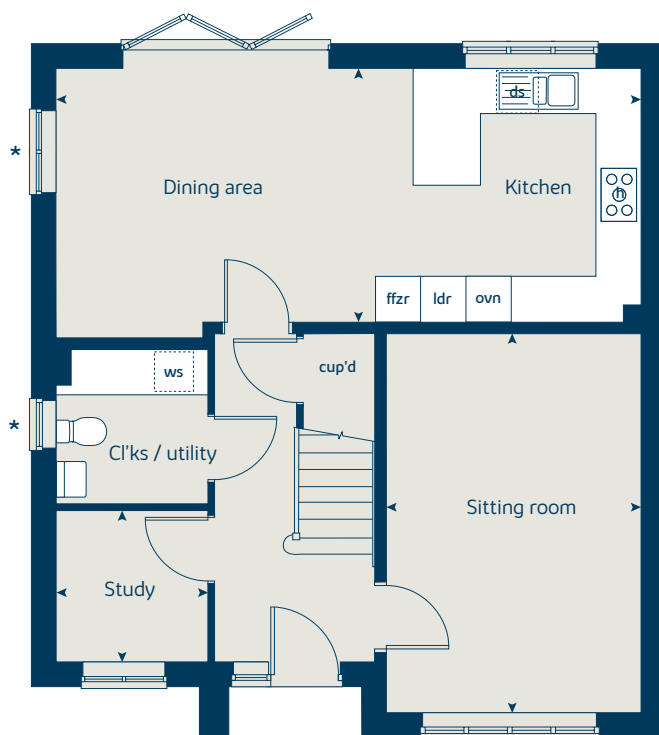
When you have finished with this leaflet please recycle it.

MMJKL DS05561 / 05.23

First floor



Ground floor





The Nash

4 bedroom home

bovishomes.co.uk

**Bovis
Homes** 

The Nash

4 bedroom home

Ground floor	metres	feet / inches
Kitchen / dining room	5.41 x 3.60	17' 9" x 11' 10"
Sitting room	4.49 x 4.39	14' 9" x 14' 4"

First floor

Bedroom 1	3.68 x 3.14	12' 1" x 10' 3"
Bedroom 2	3.76 x 3.01	12' 4" x 9' 10"
Bedroom 3	4.34 x 2.18	14' 2" x 7' 1"
Bedroom 4	2.53 x 2.31	8' 4" x 7' 7"

The Nash | S426V1 MMJKL |

This floorplan has been produced for illustrative purposes only. Room sizes shown are between arrow points as indicated on plan. The dimensions have tolerances of + or -50mm and should not be used other than for general guidance. If specific dimensions are required, enquiries should be made to the sales consultant.

ovn	oven	ffzs	fridge freezer space
h	hob	cup'd	cupboard
ds	dishwasher space	< >	measuring points
ws	washing machine space		

Please refer to the sales consultant for specific plot details as the illustrations shown are computer generated impressions of how the property may look so are indicative only. External details or finishes may vary on individual plots and homes may be built in either detached or attached styles depending on the development layout. Exact specifications, window styles and whether a property is left or right handed may differ from plot to plot.

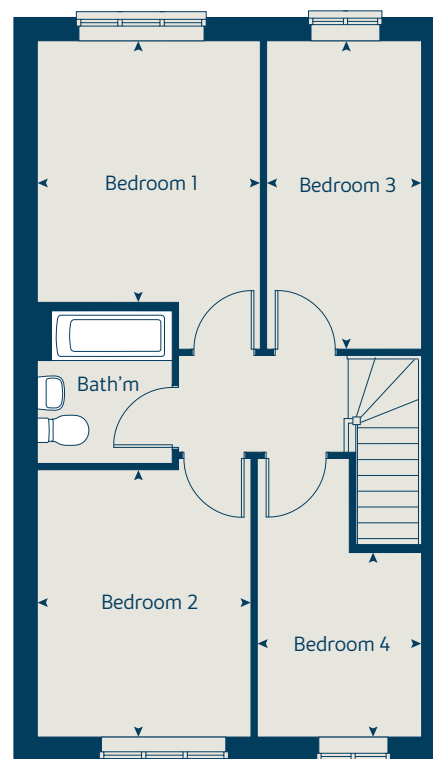
The floorplans shown are not to scale. Measurements are based on the original drawings. Slight variations may occur during construction.

Produced by the Vistry Group Design Studio.

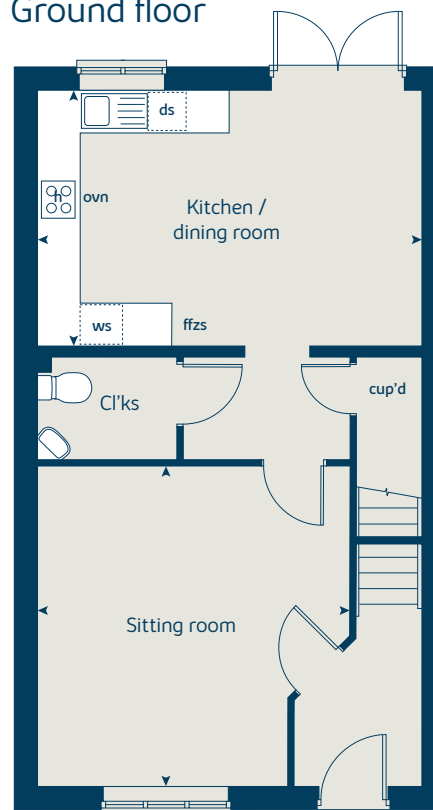
When you have finished with this leaflet please recycle it.

MMJKL DS05561 / 05.23

First floor





Ground floor



Whitehouse Park

Milton Keynes - Phase 6

2 bedroom home

-  The Jasmine
-  The Clover - Milton Keynes connected home. Please see sales consultant for further details.

3 bedroom home

-  The Hazel
-  The Cypress
-  The Spruce
-  The Spruce II
-  The Maritima - Milton Keynes connected home. Please see sales consultant for further details.

4 bedroom home

-  The Chestnut
-  The Chestnut II
-  The Aspen
-  The Winchcombe II
-  The Violet
-  The Maple

5 bedroom home

-  The Birch
-  The Lime
-  The Ascot
-  Affordable housing

- bs bin store
- bcp bin collection point
- cs cycle store



This plan has been produced for home identification purposes only and may be subject to change. Please check the details of your chosen plot and house type with the sales consultant. Development layout plan correct at time of going to print.

Produced by the Vistry Group Design Studio.

170-MILT DSXX0031 / 10.23

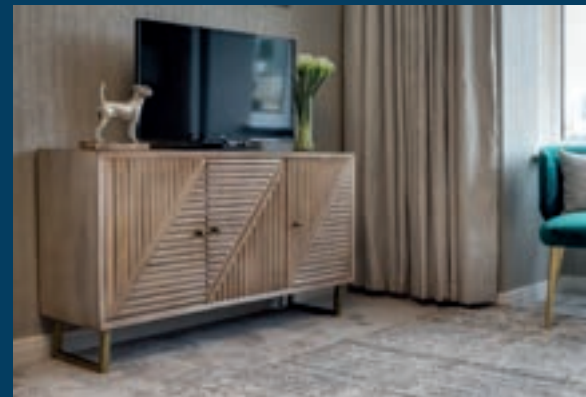
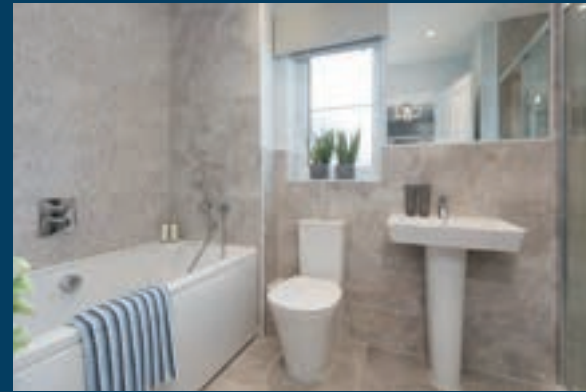
So much choice...

Part of the excitement of buying a new home is the thrill of being the first person to live in the property and having a brand new contemporary kitchen and modern bathroom. Our premium brand partners ensure that all of our fixtures and fittings comply with the latest Government building regulations and only branded appliances are installed in your new home.

Once you know what specification comes included, you'll have a choice from our specially selected tiles for your kitchen and bathrooms, as well as kitchen worktops and cupboard doors. You can then use the Bovis Homes **Select** brochure to add the finishing touches to your home to make it extra special for you!

From personalising your bathrooms with stunning ceramics, or adding smooth sliding wardrobes to your master bedroom, there are a wide range of additional options and upgrades available.

The availability of items is subject to the stage of build, and can vary by development and house type. Our sales consultants will be happy to provide guidance.



Whitehouse Park

Milton Keynes - Phase 6

The specification shown in this leaflet is correct at the time of going to press. Bovis Homes is continually reviewing and updating the specification on all housetypes and therefore reserves the right to change specification details. Photographs depict a typical Bovis Homes interior and may include optional upgrades. For full details regarding current specification and finishes, for the plots you are interested in, please refer to our sales consultant.

Produced by the Vistry Group Design Studio.

When you have finished with this leaflet please recycle it.

170-MILT Phase 6 DS07040 / 08.23



Specification

bovishomes.co.uk



Whitehouse Park

Milton Keynes - Phase 6

Use this guide to see what features are included in your new home. Your sales consultant will be happy to discuss the **Select** range of extras available.



Kitchen

	2 bedroom The Jasmine	3 bedroom The Hazel The Cypress The Spruce	4 bedroom The Chestnut The Chestnut II The Violet The Maple	5 bedroom The Birch The Lime The Ascot
Choice of fitted kitchen (doors and worktops)*	■	■ ■ ■	■ ■ ■ ■	■ ■ ■
Stainless steel sink and drainer with chrome mixer tap	■	■ ■ ■	■ ■ ■ ■	■ ■ ■
Stainless steel sink and drainer (single bowl) with chrome mixer tap in utility		■	■ ■	■ ■
Hob with built-in oven (high level or under), chimney hood (and splashback where applicable)	■	■ ■ ■	■ ■ ■ ■	■
Hob with two high level ovens with stainless steel chimney hood (and splashback where applicable)				■ ■
LED under unit lighting				■ ■ ■
Fridge / freezer space	■	■ ■ ■		
Integrated 50 / 50 fridge freezer			■ ■ ■ ■	■ ■ ■
Space for integrated dishwasher with plumbing and electrics		■ ■ ■	■ ■ ■	
Integrated dishwasher				■ ■ ■
Space for washing machine with plumbing and electrics (in utility or kitchen)	■	■ ■ ■	■ ■ ■ ■	■ ■ ■

Bathrooms and en suite(s)

Ideal Standard contemporary white sanitary ware suite	■	■ ■ ■	■ ■ ■ ■	■ ■ ■
Thermostatic shower, tray and glass enclosure		■ ■ ■	■ ■ ■ ■	■ ■ ■
Handheld hair wash attachment to bath		■ ■ ■	■ ■ ■ ■	■ ■ ■
Thermostatic shower over the bath with glazed screen	■			
Choice of Porcelanosa wall tiling (full height over bath)*	■			
Choice of Porcelanosa wall tiling (half-height over bath and full-height to shower cubicle)*		■ ■ ■	■ ■ ■ ■	
Choice of Porcelanosa wall tiling (half-height to walls with fitted sanitary ware, half-height over bath, and full-height to shower cubicle)*				■ ■ ■
Chrome towel warmer in bathroom and en suite(s) (where applicable)			■ ■ ■ ■	■ ■ ■

Doors and Windows

	2 bedroom The Jasmine	3 bedroom The Hazel The Cypress The Spruce	4 bedroom The Chestnut The Chestnut II The Violet The Maple	5 bedroom The Birch The Lime The Ascot
Front door with multi-point security locking system and security chain	■	■ ■ ■	■ ■ ■ ■	■ ■ ■ ■
PVCu double glazing to windows	■	■ ■ ■	■ ■ ■ ■	■ ■ ■ ■
Double glazed PVCu French doors		■ ■ ■	■	■
Powder coated aluminium double glazed bi-fold doors			■ ■ ■ ■	■ ■ ■ ■
White painted internal doors with chrome lever handles	■	■ ■ ■	■ ■ ■ ■	■ ■ ■ ■
Paving outside French / bi-fold door		■ ■ ■	■ ■ ■ ■	■ ■ ■ ■

General

White painted walls and smooth white ceilings	■	■ ■ ■	■ ■ ■ ■	■ ■ ■ ■
Multi-media plate in sitting room	■	■ ■ ■	■ ■ ■ ■	■ ■ ■ ■
Master telephone socket	■	■ ■ ■	■ ■ ■ ■	■ ■ ■ ■
Gas central heating with wall mounted combi-boiler, programme selector and room thermostat(s)	■	■ ■ ■	■ ■ ■	
Gas central heating with wall mounted boiler and separate hot water cylinder programme selector and room thermostat(s)				■ ■ ■ ■
Thermostatic valves to all radiators (with the exception of rooms with separate thermostat control)	■	■ ■ ■	■ ■ ■ ■	■ ■ ■ ■
Pre-wired for rear garden floodlight option		■ ■ ■	■ ■ ■ ■	■ ■ ■ ■
External tap to side or rear elevation		■ ■ ■	■ ■ ■ ■	■ ■ ■ ■
Mains wired smoke detectors with battery back-up	■	■ ■ ■	■ ■ ■ ■	■ ■ ■ ■
Power and lighting to 'on plot' garage (where applicable)		■ ■ ■	■ ■ ■ ■	■ ■ ■ ■
Landscaped front gardens (where applicable)	■	■ ■ ■	■ ■ ■ ■	■ ■ ■ ■
NHBC Buildmark cover	■	■ ■ ■	■ ■ ■ ■	■ ■ ■ ■
First two years' customer service support from Bovis Homes	■	■ ■ ■	■ ■ ■ ■	■ ■ ■ ■

■ Fitted as standard - included in the property
* Subject to stage of construction



The Jasmine

2 bedroom home

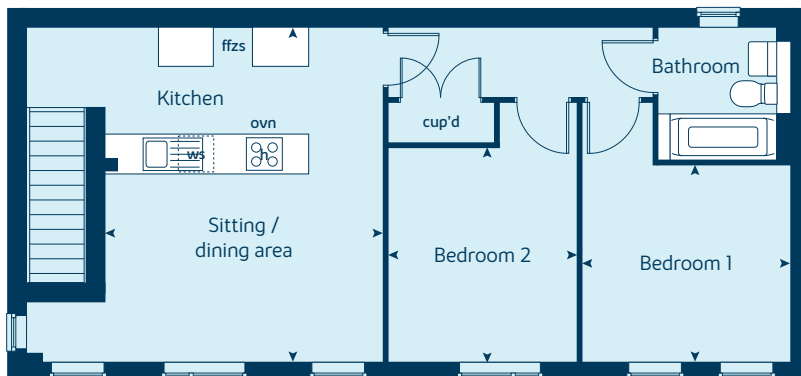
bovishomes.co.uk

**Bovis
Homes** 

The Jasmine

2 bedroom home

First floor



Plots 571 and 573

Plots 571 and 573

Kitchen / sitting / dining area	5.30 x 4.37	17' 5" x 14' 4"
Bedroom 1	3.30 x 3.14	10' 10" x 10' 4"
Bedroom 2	3.41 x 3.01	11' 2" x 9' 11"

Plots 570 and 572

metres feet / inches

Kitchen / sitting / dining area	5.30 x 4.42	17' 5" x 14' 6"
Bedroom 1	3.56 x 3.30	11' 8" x 10' 10"
Bedroom 2	3.56 x 2.96	11' 8" x 9' 9"

The Jasmine | 2BFP MMILT |

This floorplan has been produced for illustrative purposes only. Room sizes shown are between arrow points as indicated on plan. The dimensions have tolerances of + or -50mm and should not be used other than for general guidance. If specific dimensions are required, enquiries should be made to the sales consultant.

ovn	oven	ffzs	fridge freezer space
h	hob	cup'd	cupboard
ws	washing machine space	◀ ▶	measuring points

Please refer to the sales consultant for specific plot details as the illustrations shown are computer generated impressions of how the property may look so are indicative only. External details or finishes may vary on individual plots and homes may be built in either detached or attached styles depending on the development layout. Exact specifications, window styles and whether a property is left or right handed may differ from plot to plot.

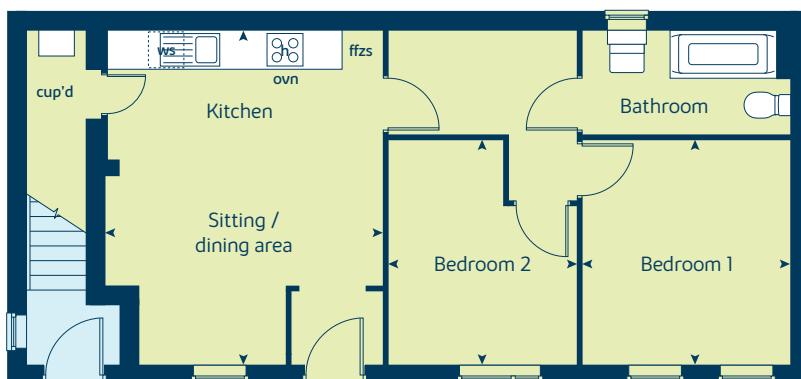
The floorplans shown are not to scale. Measurements are based on the original drawings. Slight variations may occur during construction.

Produced by the Vistry Group Design Studio.

When you have finished with this leaflet please recycle it.

170-MILT Phase 6 DS05009 / 02.23

Ground floor



Plots 570 and 572



The Hazel

3 bedroom home

bovishomes.co.uk



The Hazel

3 bedroom home

Ground floor	metres	feet / inches
Kitchen / dining area	5.19 x 2.99	17' 0" x 9' 9"
Sitting room	4.17 x 3.66	13' 8" x 12' 0"

First floor

Bedroom 1	3.52 x 2.97	11' 7" x 9' 8"
Bedroom 2	3.04 x 3.03	10' 0" x 9' 11"
Bedroom 3	3.45 x 2.07	11' 4" x 6' 9"

The Hazel | X305 P5 vt MMILT |

This floorplan has been produced for illustrative purposes only. Room sizes shown are between arrow points as indicated on plan. The dimensions have tolerances of + or -50mm and should not be used other than for general guidance. If specific dimensions are required, enquiries should be made to the sales consultant.

* Windows apply to selected plots only. Please see sales consultant for further details.

① Alternative window layouts apply to selected plots only. Please see sales consultant for further details.

ovn	oven	ffzs	fridge freezer space
h	hob	w	wardrobe
ds	dishwasher space	cup'd	cupboard
ws	washing machine space	◀ ▶	measuring points

Please refer to the sales consultant for specific plot details as the illustrations shown are computer generated impressions of how the property may look so are indicative only. External details or finishes may vary on individual plots and homes may be built in either detached or attached styles depending on the development layout. Exact specifications, window styles and whether a property is left or right handed may differ from plot to plot.

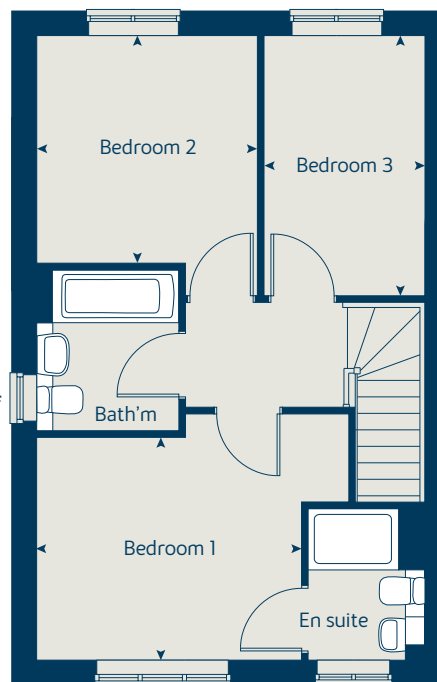
The floorplans shown are not to scale. Measurements are based on the original drawings. Slight variations may occur during construction.

Produced by the Vistry Group Design Studio.

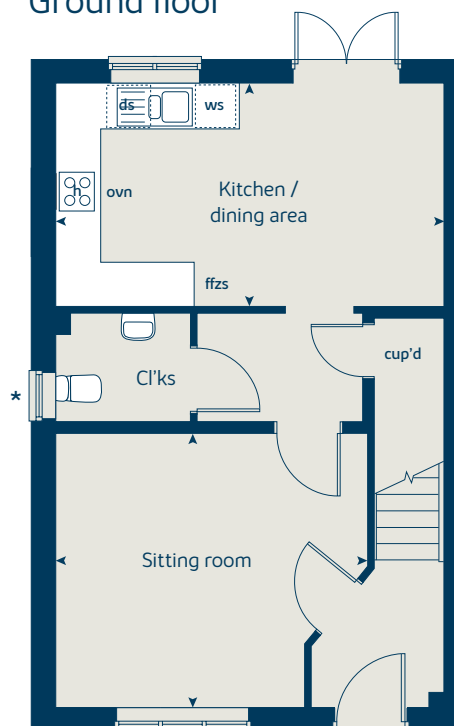
When you have finished with this leaflet please recycle it.

170-MILT Phase 6 DS07790 / 10.23

First floor



Ground floor





The Cypress

3 bedroom home

bovishomes.co.uk

**Bovis
Homes** 

The Cypress

3 bedroom home

Ground floor	metres	feet / inches
Kitchen / dining area	5.52 x 3.12	18' 1" x 10' 3"
Sitting room	4.29 x 3.40	14' 1" x 11' 2"

First floor

Bedroom 1	3.26 x 2.97	10' 8" x 9' 9"
Bedroom 2	3.95 x 3.28	13' 0" x 10' 9"
Bedroom 3	3.54 x 2.16	11' 7" x 7' 1"

The Cypress | X308 (IF) P7 vt MMILT |

This floorplan has been produced for illustrative purposes only. Room sizes shown are between arrow points as indicated on plan. The dimensions have tolerances of + or -50mm and should not be used other than for general guidance. If specific dimensions are required, enquiries should be made to the sales consultant.

ovn	oven	ffzs	fridge freezer space
h	hob	cup'd	cupboard
ds	dishwasher space	◀ ▶	measuring points
ws	washing machine space		

Please refer to the sales consultant for specific plot details as the illustrations shown are computer generated impressions of how the property may look so are indicative only. External details or finishes may vary on individual plots and homes may be built in either detached or attached styles depending on the development layout. Exact specifications, window styles and whether a property is left or right handed may differ from plot to plot.

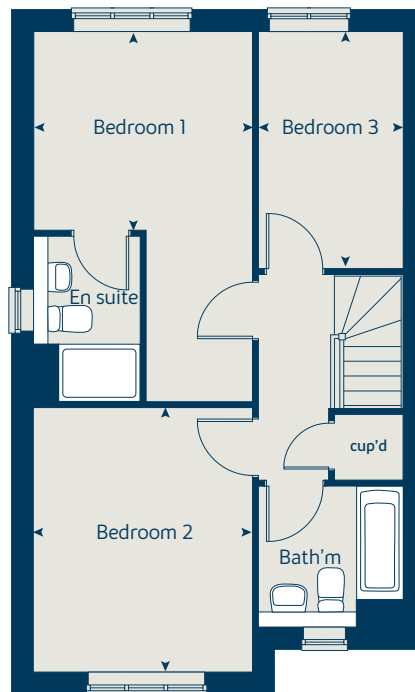
The floorplans shown are not to scale. Measurements are based on the original drawings. Slight variations may occur during construction.

Produced by the Vistry Group Design Studio.

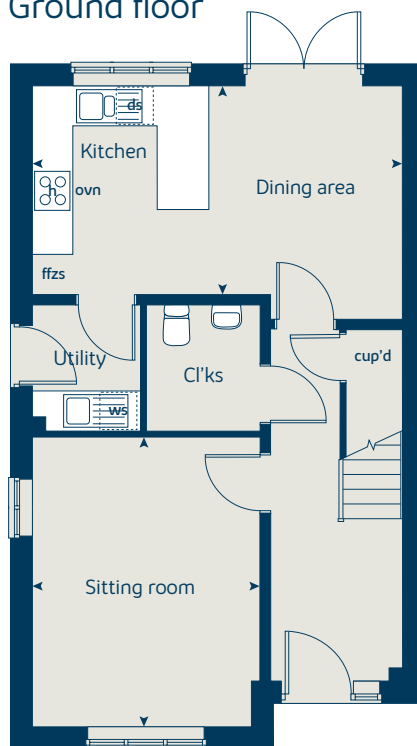
When you have finished with this leaflet please recycle it.

170-MILT Phase 6 DS05009 / 02.23

First floor



Ground floor





The Maritima

3 bedroom home

bovishomes.co.uk

**Bovis
Homes** 

The Maritima

3 bedroom home

Ground floor	metres	feet / inches
Kitchen	3.51 x 2.48	11' 6" x 8' 2"
Sitting room	4.52 x 4.42	14' 10" x 14' 6"

First floor

Bedroom 1	4.52 x 2.50	14' 10" x 8' 3"
Bedroom 2	4.32 x 2.18	14' 2" x 7' 2"
Bedroom 3	3.26 x 2.23	10' 8" x 7' 4"

The Maritima | S351 MMILT |

This floorplan has been produced for illustrative purposes only. Room sizes shown are between arrow points as indicated on plan. The dimensions have tolerances of + or -50mm and should not be used other than for general guidance. If specific dimensions are required, enquiries should be made to the sales consultant.

* Windows apply to plots 588 and 591 only. Please see sales advisor for further details.

ovn	oven	ffzs	fridge freezer space
h	hob	cup'd	cupboard
ds	dishwasher space	◀ ▶	measuring points
ws	washing machine space		

Please refer to the sales consultant for specific plot details as the illustrations shown are computer generated impressions of how the property may look so are indicative only. External details or finishes may vary on individual plots and homes may be built in either detached or attached styles depending on the development layout. Exact specifications, window styles and whether a property is left or right handed may differ from plot to plot.

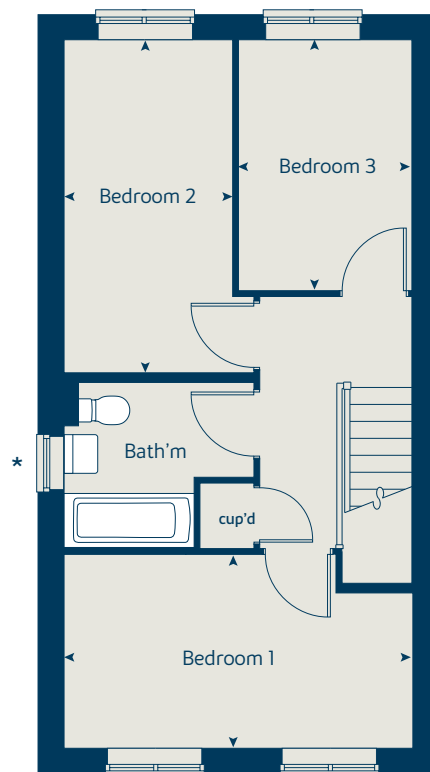
The floorplans shown are not to scale. Measurements are based on the original drawings. Slight variations may occur during construction.

Produced by the Vistry Group Design Studio.

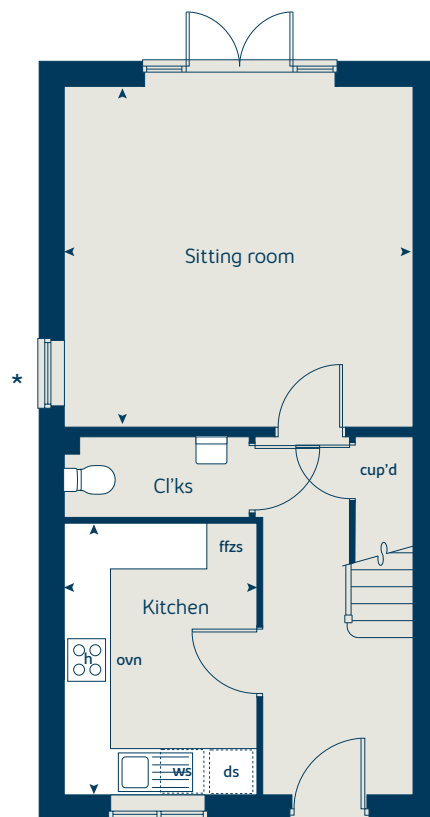
When you have finished with this leaflet please recycle it.

170-MILT Phase 6 DS05009 / 02.23

First floor



Ground floor





The Spruce

3 bedroom home

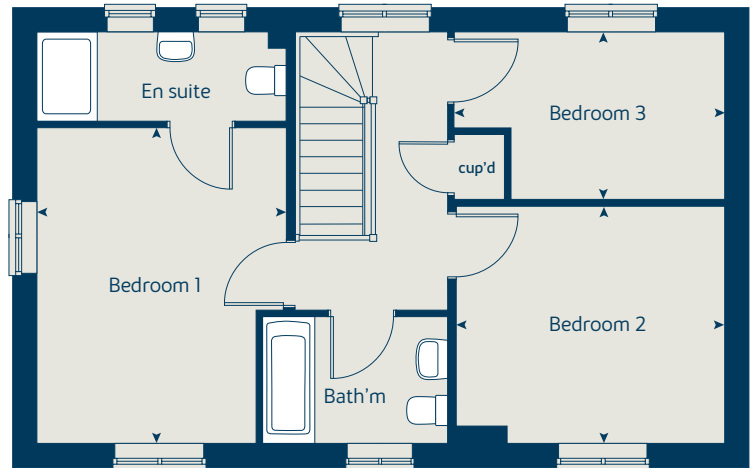
bovishomes.co.uk

**Bovis
Homes** 

The Spruce

3 bedroom home

First floor



Ground floor	metres	feet / inches
Kitchen / dining area	5.53 x 3.55	18' 2" x 11' 8"
Sitting room	5.53 x 3.32	18' 2" x 10' 11"

First floor

Bedroom 1	4.26 x 3.40	14' 0" x 11' 2"
Bedroom 2	3.59 x 3.17	11' 10" x 10' 5"
Bedroom 3	3.59 x 2.24	11' 10" x 7' 4"

The Spruce | X307 (IF) 01 MMILT |

This floorplan has been produced for illustrative purposes only. Room sizes shown are between arrow points as indicated on plan. The dimensions have tolerances of + or -50mm and should not be used other than for general guidance. If specific dimensions are required, enquiries should be made to the sales consultant.

ovn	oven	ffzs	fridge freezer space
h	hob	cup'd	cupboard
ds	dishwasher space	◀ ▶	measuring points
ws	washing machine space		

Please refer to the sales consultant for specific plot details as the illustrations shown are computer generated impressions of how the property may look so are indicative only. External details or finishes may vary on individual plots and homes may be built in either detached or attached styles depending on the development layout. Exact specifications, window styles and whether a property is left or right handed may differ from plot to plot.

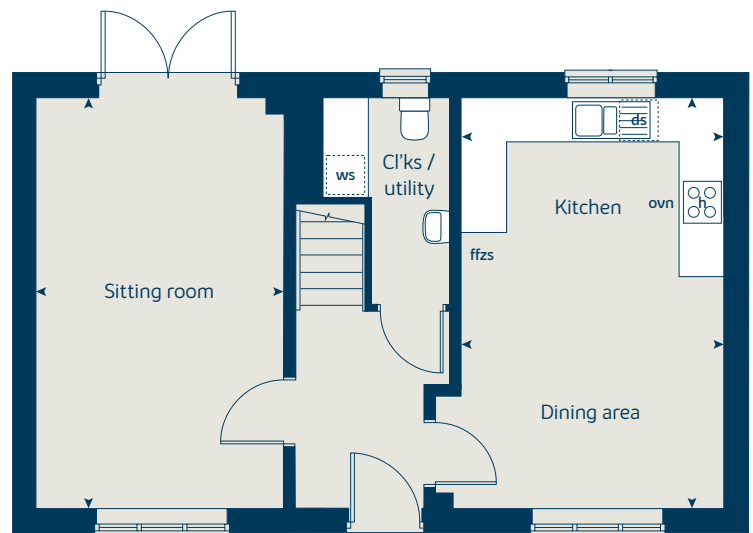
The floorplans shown are not to scale. Measurements are based on the original drawings. Slight variations may occur during construction.

Produced by the Vistry Group Design Studio.

When you have finished with this leaflet please recycle it.

170-MILT Phase 6 DS05009 / 02.23

Ground floor





The Spruce II

3 bedroom home

bovishomes.co.uk

**Bovis
Homes** 

The Spruce II

3 bedroom home

Ground floor	metres	feet / inches
Kitchen / dining area	5.53 x 3.55	18' 2" x 11' 8"
Sitting room	5.53 x 3.32	18' 2" x 10' 11"

First floor

Bedroom 1	4.21 x 2.90	13' 10" x 9' 6"
Bedroom 2	3.59 x 3.17	11' 10" x 10' 5"
Bedroom 3	3.59 x 2.29	11' 10" x 7' 6"

The Spruce II | X307 (IF) P6 vt MMILT |

This floorplan has been produced for illustrative purposes only. Room sizes shown are between arrow points as indicated on plan. The dimensions have tolerances of + or -50mm and should not be used other than for general guidance. If specific dimensions are required, enquiries should be made to the sales consultant.

* Windows apply to selected plots only. Please see sales consultant for further details.

① Alternative side window layout applies to selected plots only. Please see sales consultant for further details.

ovn	oven	ffzs	fridge freezer space
h	hob	cup'd	cupboard
ds	dishwasher space	◀ ▶	measuring points
ws	washing machine space		

Please refer to the sales consultant for specific plot details as the illustrations shown are computer generated impressions of how the property may look so are indicative only. External details or finishes may vary on individual plots and homes may be built in either detached or attached styles depending on the development layout. Exact specifications, window styles and whether a property is left or right handed may differ from plot to plot.

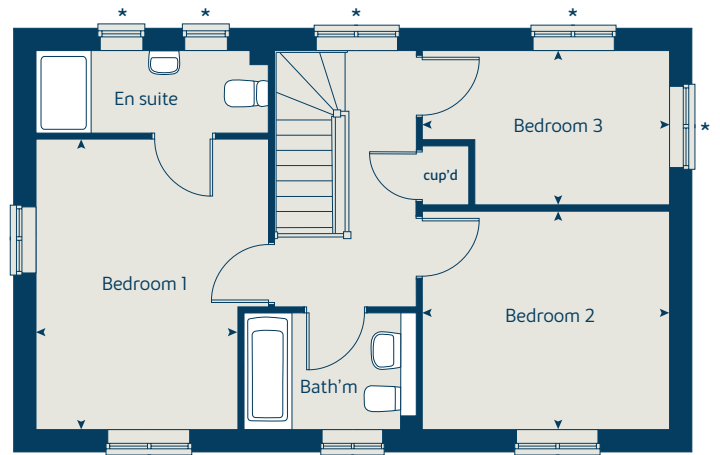
The floorplans shown are not to scale. Measurements are based on the original drawings. Slight variations may occur during construction.

Produced by the Vistry Group Design Studio.

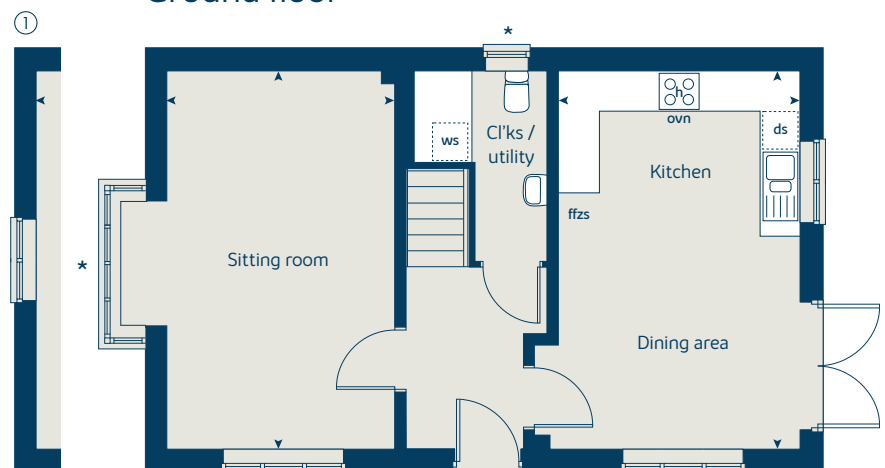
When you have finished with this leaflet please recycle it.

170-MILT Phase 6 DS05009 / 02.23

First floor



Ground floor





The Chestnut

4 bedroom home

bovishomes.co.uk

**Bovis
Homes** 

The Chestnut

4 bedroom home

Ground floor	metres	feet / inches
Kitchen	4.03 x 3.34	13' 2" x 10' 11"
Dining / family area	4.59 x 2.85	15' 0" x 9' 4"
Sitting room	4.98 x 3.40	16' 4" x 11' 1"
Study	3.40 x 1.81	11' 1" x 5' 11"

First floor

Bedroom 1	4.48 x 3.24	14' 8" x 10' 7"
Bedroom 2	3.48 x 3.36	11' 5" x 11' 0"
Bedroom 3	3.25 x 2.29	10' 7" x 7' 6"
Bedroom 4	3.42 x 2.34	11' 2" x 7' 8"

The Chestnut | X413 P5 vt MMILT |

This floorplan has been produced for illustrative purposes only. Room sizes shown are between arrow points as indicated on plan. The dimensions have tolerances of + or -50mm and should not be used other than for general guidance. If specific dimensions are required, enquiries should be made to the sales consultant.

* Windows apply to selected plots only. Please see sales consultant for further details.

① Alternative window layouts apply to selected plots only. Please see sales consultant for further details.

ovn	oven	ffzr	fridge freezer
h	hob	w	wardrobe
ds	dishwasher space	cup'd	cupboard
ws	washing machine space	◀ ▶	measuring points

Please refer to the sales consultant for specific plot details as the illustrations shown are computer generated impressions of how the property may look so are indicative only. External details or finishes may vary on individual plots and homes may be built in either detached or attached styles depending on the development layout. Exact specifications, window styles and whether a property is left or right handed may differ from plot to plot.

The floorplans shown are not to scale. Measurements are based on the original drawings. Slight variations may occur during construction.

Produced by the Vistry Group Design Studio.

When you have finished with this leaflet please recycle it.

170-MILT Phase 6 DS05009 / 02.23

First floor



Ground floor





The Chestnut II

4 bedroom home

bovishomes.co.uk

**Bovis
Homes** 

The Chestnut II

4 bedroom home

Ground floor	metres	feet / inches
Kitchen	4.03 x 3.34	13' 2" x 10' 11"
Dining / family area	4.59 x 2.85	15' 0" x 9' 4"
Sitting room	4.98 x 3.40	16' 4" x 11' 1"
Study	3.40 x 1.81	11' 1" x 5' 11"

First floor

Bedroom 1	4.48 x 3.24	14' 8" x 10' 7"
Bedroom 2	3.48 x 3.36	11' 5" x 11' 0"
Bedroom 3	3.25 x 2.29	10' 7" x 7' 6"
Bedroom 4	3.42 x 2.34	11' 2" x 7' 8"

The Chestnut II | X413V MMILT |

This floorplan has been produced for illustrative purposes only. Room sizes shown are between arrow points as indicated on plan. The dimensions have tolerances of + or -50mm and should not be used other than for general guidance. If specific dimensions are required, enquiries should be made to the sales consultant.

* Bay window applies to selected plots only. Please see sales consultant for further details.

** Window size may vary. Please see sales consultant for further details.

① Alternative window layouts apply to selected plots only. Please see sales consultant for further details.

ovn	oven	ffzr	fridge freezer
h	hob	cup'd	cupboard
ds	dishwasher space	< >	measuring points
ws	washing machine space		

Please refer to the sales consultant for specific plot details as the illustrations shown are computer generated impressions of how the property may look so are indicative only. External details or finishes may vary on individual plots and homes may be built in either detached or attached styles depending on the development layout. Exact specifications, window styles and whether a property is left or right handed may differ from plot to plot.

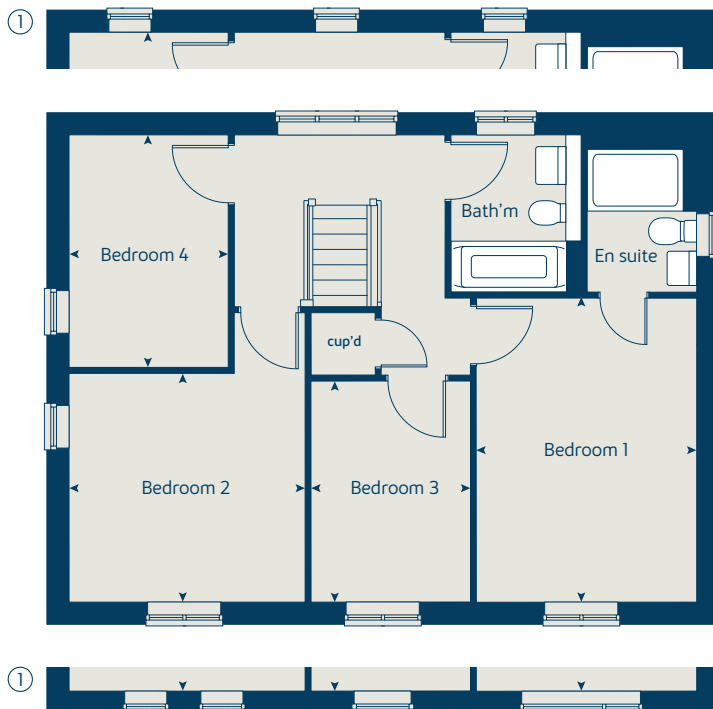
The floorplans shown are not to scale. Measurements are based on the original drawings. Slight variations may occur during construction.

Produced by the Vistry Group Design Studio.

When you have finished with this leaflet please recycle it.

170-MILT Phase 6 DS05009 / 02.23

First floor



Ground floor





The Maple

4 bedroom home

bovishomes.co.uk

**Bovis
Homes** 

The Maple

4 bedroom home

Ground floor	metres	feet / inches
Kitchen	3.58 x 3.55	11' 9" x 11' 8"
Family / dining area	7.30 x 3.25	23' 11" x 10' 8"
Sitting room	4.50 x 3.54	14' 9" x 11' 7"
Study	2.54 x 2.33	8' 4" x 7' 8"

First floor

Bedroom 1	3.60 x 3.55	11' 10" x 11' 8"
Bedroom 2	3.71 x 3.60	12' 2" x 11' 10"
Bedroom 3	4.18 x 2.90	13' 9" x 9' 6"
Bedroom 4	2.90 x 2.90	9' 6" x 9' 6"

The Maple | X416 P5 vt MMILT |

This floorplan has been produced for illustrative purposes only. Room sizes shown are between arrow points as indicated on plan. The dimensions have tolerances of + or -50mm and should not be used other than for general guidance. If specific dimensions are required, enquiries should be made to the sales consultant.

* Windows apply to selected plots only. Please see sales consultant for further details.

** Windows may vary in size. Please see sales consultant for further details.

① Alternative window layouts apply to selected plots only. Please see sales consultant for further details.

ovn	oven	ffzr	fridge freezer
h	hob	cyl	hot water cylinder
dw	dishwasher	cup'd	cupboard
ws	washing machine space	◀ ▶	measuring points

Please refer to the sales consultant for specific plot details as the illustrations shown are computer generated impressions of how the property may look so are indicative only. External details or finishes may vary on individual plots and homes may be built in either detached or attached styles depending on the development layout. Exact specifications, window styles and whether a property is left or right handed may differ from plot to plot.

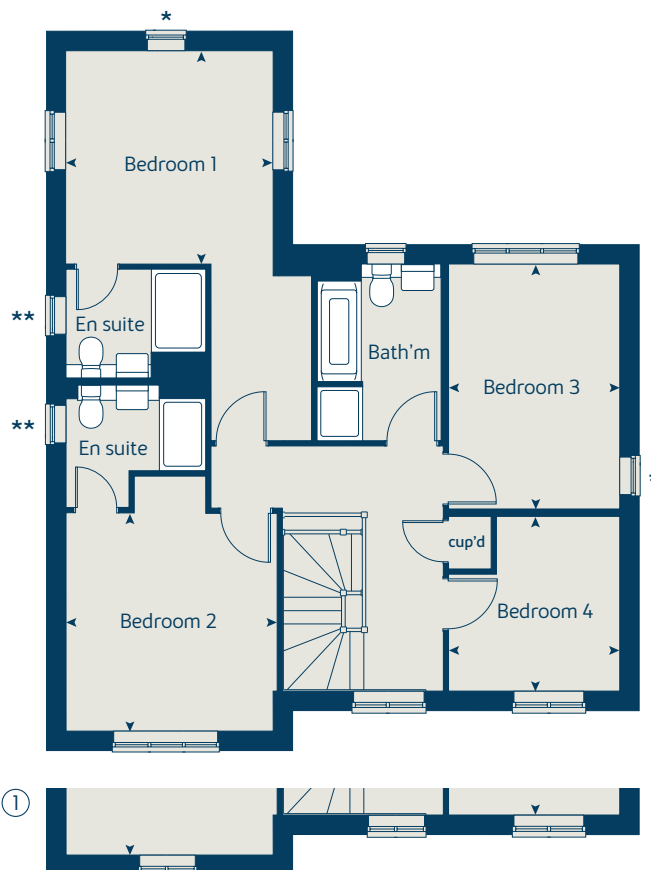
The floorplans shown are not to scale. Measurements are based on the original drawings. Slight variations may occur during construction.

Produced by the Vistry Group Design Studio.

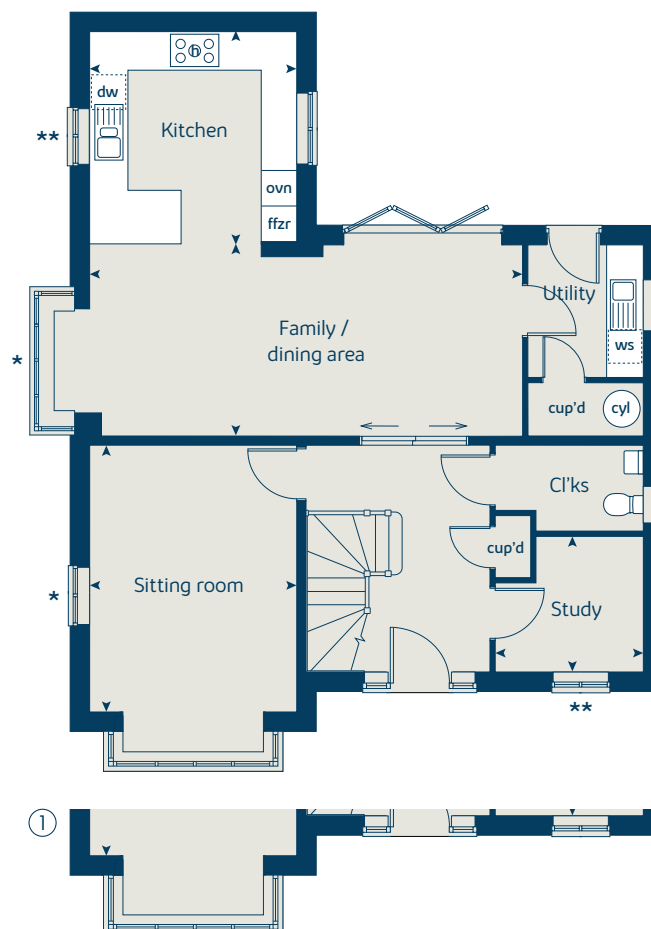
When you have finished with this leaflet please recycle it.

170-MILT Phase 6 DS05009 / 02.23

First floor



Ground floor





The Violet

4 bedroom home

bovishomes.co.uk

**Bovis
Homes** 

The Violet

4 bedroom home

Ground floor	metres	feet / inches
Kitchen / family area	8.00 x 3.66	26' 3" x 12' 0"
Sitting room	4.22 x 4.17	13' 10" x 13' 8"
Study	2.69 x 2.01	8' 10" x 6' 7"

First floor

Bedroom 1	4.17 x 3.81	13' 8" x 12' 6"
Bedroom 2	4.46 x 3.71	14' 8" x 12' 2"
Bedroom 3	3.71 x 3.43	12' 2" x 11' 3"
Bedroom 4	3.67 x 2.69	12' 1" x 8' 10"

The Violet | 16004BNHC MMILT |

This floorplan has been produced for illustrative purposes only. Room sizes shown are between arrow points as indicated on plan. The dimensions have tolerances of + or -50mm and should not be used other than for general guidance. If specific dimensions are required, enquiries should be made to the sales consultant.

* Window size may vary. Please see sales consultant for further details.

① Alternative window layouts apply to selected plots only. Please see sales consultant for further details.

② Utility door omitted to plots 548, 552 and 553. Please see sales consultant for further details.

ovn	oven	ffzr	fridge freezer
h	hob	cup'd	cupboard
ds	dishwasher space	◀ ▶	measuring points
ws	washing machine space		

Please refer to the sales consultant for specific plot details as the illustrations shown are computer generated impressions of how the property may look so are indicative only. External details or finishes may vary on individual plots and homes may be built in either detached or attached styles depending on the development layout. Exact specifications, window styles and whether a property is left or right handed may differ from plot to plot.

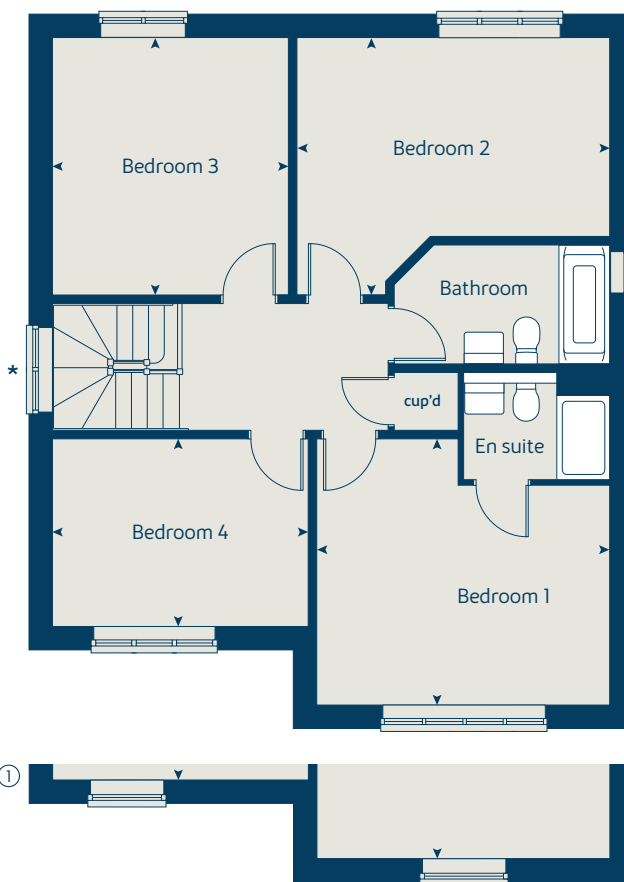
The floorplans shown are not to scale. Measurements are based on the original drawings. Slight variations may occur during construction.

Produced by the Vistry Group Design Studio.

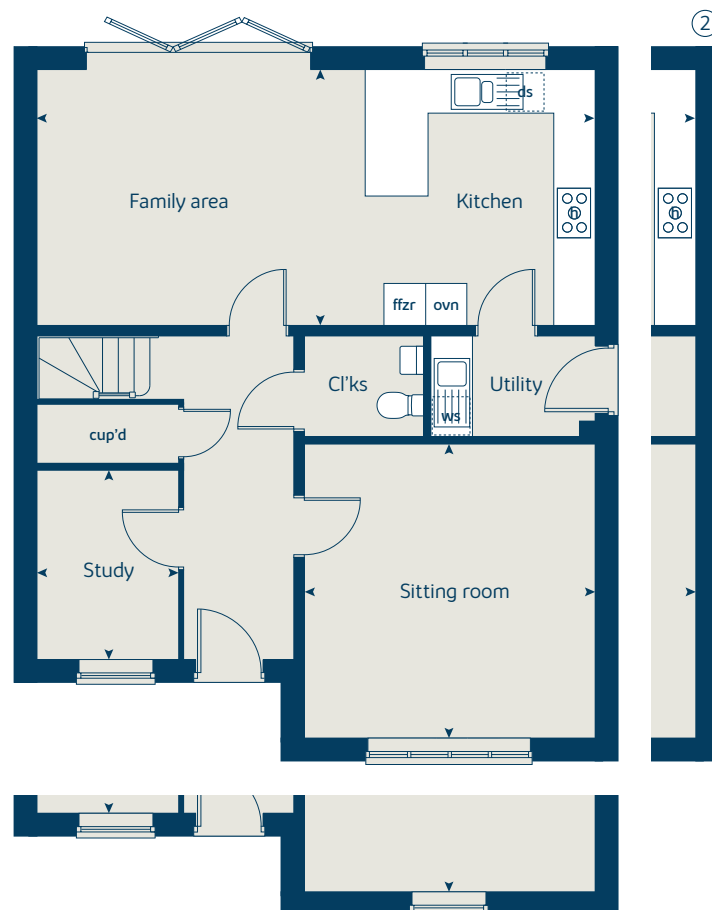
When you have finished with this leaflet please recycle it.

170-MILT Phase 6 DS05009 / 02.23

First floor



Ground floor





The Birch

5 bedroom home

bovishomes.co.uk

**Bovis
Homes** 

The Birch

5 bedroom home

Ground floor	metres	feet / inches
Kitchen	4.54 x 3.71	14' 11" x 12' 2"
Family / dining area	5.42 x 3.51	17' 9" x 11' 6"
Sitting room	4.17 x 3.61	13' 8" x 11' 10"
Study / dining room	3.41 x 3.00	11' 2" x 9' 10"

First floor

Bedroom 1	3.62 x 3.51	11' 10" x 11' 6"
Bedroom 2	3.92 x 2.90	12' 9" x 9' 6"
Bedroom 3	3.06 x 2.82	10' 0" x 9' 3"
Bedroom 4	2.98 x 2.83	9' 9" x 9' 3"
Bedroom 5	3.00 x 2.83	9' 10" x 9' 3"

The Birch | X518 (IF) P5 vt MMLT |

This floorplan has been produced for illustrative purposes only. Room sizes shown are between arrow points as indicated on plan. The dimensions have tolerances of + or -50mm and should not be used other than for general guidance. If specific dimensions are required, enquiries should be made to the sales consultant.

* Door and windows apply to selected plots only. Please see sales consultant for further details.

ovn	oven	ffzr	fridge freezer
h	hob	cyl	hot water cylinder
dw	dishwasher	cup'd	cupboard
ws	washing machine space	<>	measuring points

Please refer to the sales consultant for specific plot details as the illustrations shown are computer generated impressions of how the property may look so are indicative only. External details or finishes may vary on individual plots and homes may be built in either detached or attached styles depending on the development layout. Exact specifications, window styles and whether a property is left or right handed may differ from plot to plot.

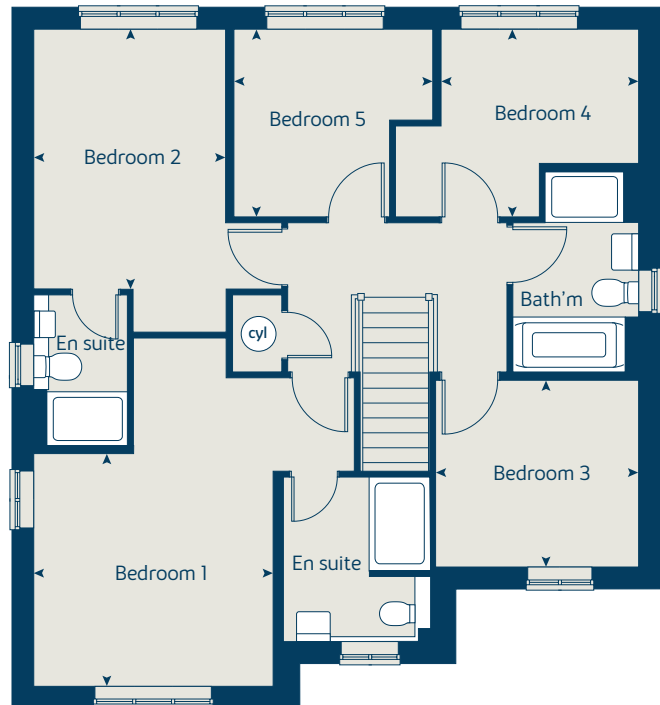
The floorplans shown are not to scale. Measurements are based on the original drawings. Slight variations may occur during construction.

Produced by the Vistry Group Design Studio.

When you have finished with this leaflet please recycle it.

170-MILT Phase 6 DS05009 / 02.23

First floor



Ground floor





The Lime

5 bedroom home

bovishomes.co.uk



The Lime

5 bedroom home

Ground floor	metres	feet / inches
Kitchen / Family / dining area	7.69 x 3.58	25' 3" x 11' 9"
Sitting room	5.39 x 3.86	17' 8" x 12' 7"
Dining room	3.86 x 2.78	12' 7" x 9' 1"
Study	3.58 x 2.55	11' 8" x 8' 4"

First floor	metres	feet / inches
Bedroom 1	4.05 x 3.76	13' 3" x 12' 3"
Bedroom 2	4.05 x 3.52	13' 3" x 11' 6"
Bedroom 3	3.26 x 3.24	10' 7" x 10' 6"
Bedroom 4	3.55 x 2.26	11' 7" x 7' 4"
Bedroom 5	2.83 x 2.64	9' 3" x 8' 7"

The Lime | X520 (IF) P6 vt MMILT |

This floorplan has been produced for illustrative purposes only. Room sizes shown are between arrow points as indicated on plan. The dimensions have tolerances of + or -50mm and should not be used other than for general guidance. If specific dimensions required, enquiries should be made to the sales consultant.

- * Window omitted to plot 594 only. Please see sales consultant for further details.
- ** Window omitted to plot 563 only. Please see sales consultant for further details.

ovn	oven	ffzr	fridge freezer
h	hob	cyl	hot water cylinder
dw	dishwasher	cup'd	cupboard
ws	washing machine space	< >	measuring points

Please refer to the sales consultant for specific plot details as the illustrations shown are computer generated impressions of how the property may look so are indicative only. External details or finishes may vary on individual plots and homes may be built in either detached or attached styles depending on the development layout. Exact specifications, window styles and whether a property is left or right handed may differ from plot to plot.

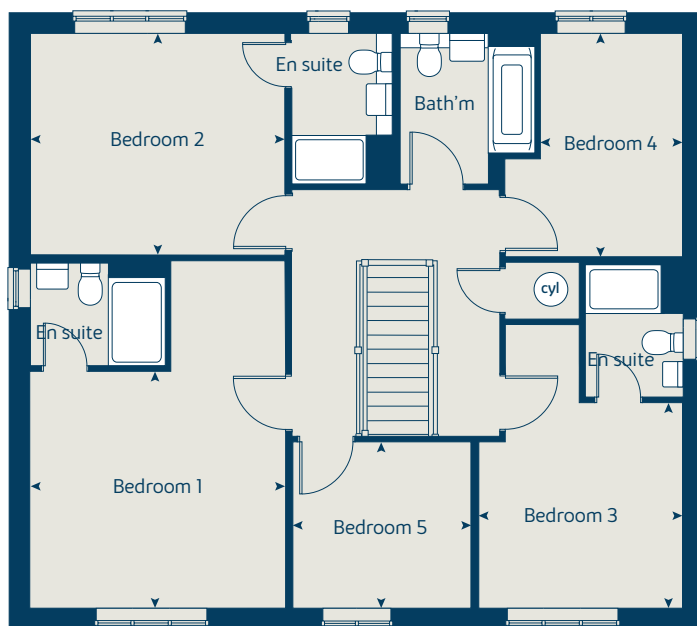
The floorplans shown are not to scale. Measurements are based on the original drawings. Slight variations may occur during construction.

Produced by the Vistry Group Design Studio.

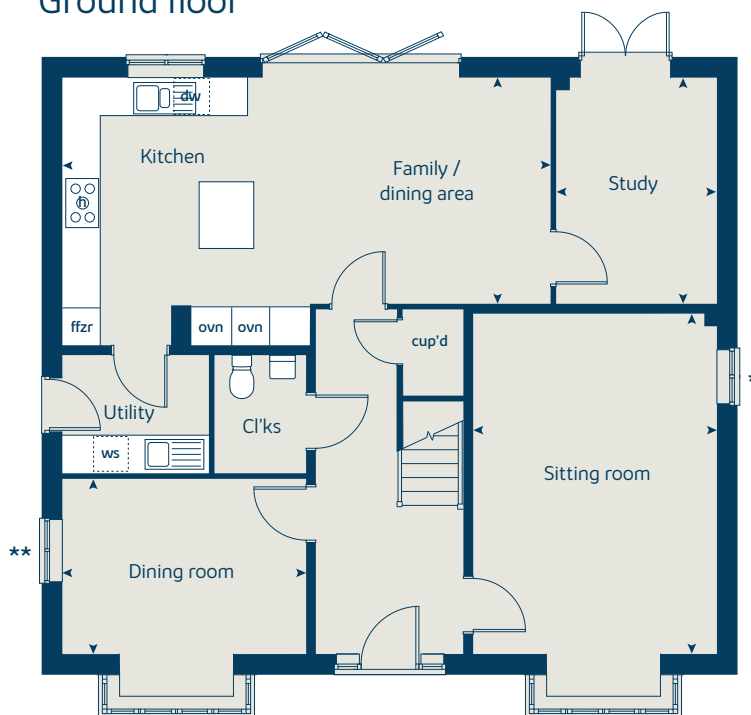
When you have finished with this leaflet please recycle it.

170-MILT Phase 6 DS07040 / 08.23

First floor



Ground floor





The Ascot

5 bedroom home

bovishomes.co.uk

**Bovis
Homes** 

The Ascot

5 bedroom home

Ground floor	metres	feet / inches
Kitchen / family area	8.30 x 4.55	27' 3" x 14' 11"
Sitting room	5.55 x 5.05	18' 2" x 16' 7"
Dining room	3.90 x 3.44	12' 9" x 11' 4"
Study	3.37 x 1.97	11' 1" x 6' 6"

First floor	metres	feet / inches
Bedroom 1	4.55 x 3.72	14' 11" x 12' 3"
Bedroom 2	4.02 x 2.91	13' 2" x 9' 7"
Bedroom 3	3.75 x 3.54	12' 4" x 11' 8"
Bedroom 4	3.06 x 2.88	10' 1" x 9' 6"
Bedroom 5	3.91 x 2.45	12' 10" x 8' 0"

The Ascot | P507 vt MMILT |

This floorplan has been produced for illustrative purposes only. Room sizes shown are between arrow points as indicated on plan. The dimensions have tolerances of + or -50mm and should not be used other than for general guidance. If specific dimensions are required, enquiries should be made to the sales consultant.

ovn	oven	f	fridge
h	hob	fzr	freezer
dw	dishwasher	cup'd	cupboard
ws	washing machine space	◀ ▶	measuring points
cyl	hot water cylinder		

Please refer to the sales consultant for specific plot details as the illustrations shown are computer generated impressions of how the property may look so are indicative only. External details or finishes may vary on individual plots and homes may be built in either detached or attached styles depending on the development layout. Exact specifications, window styles and whether a property is left or right handed may differ from plot to plot.

The floorplans shown are not to scale. Measurements are based on the original drawings. Slight variations may occur during construction.

Produced by the Vistry Group Design Studio.

When you have finished with this leaflet please recycle it.

170-MILT Phase 6 DS07300 / 08.23

