

urbansplash

Beehive Mill

Ancoats, Manchester

SANKEY'S
SOAP

Beehive Mill

What is Beehive Mill?

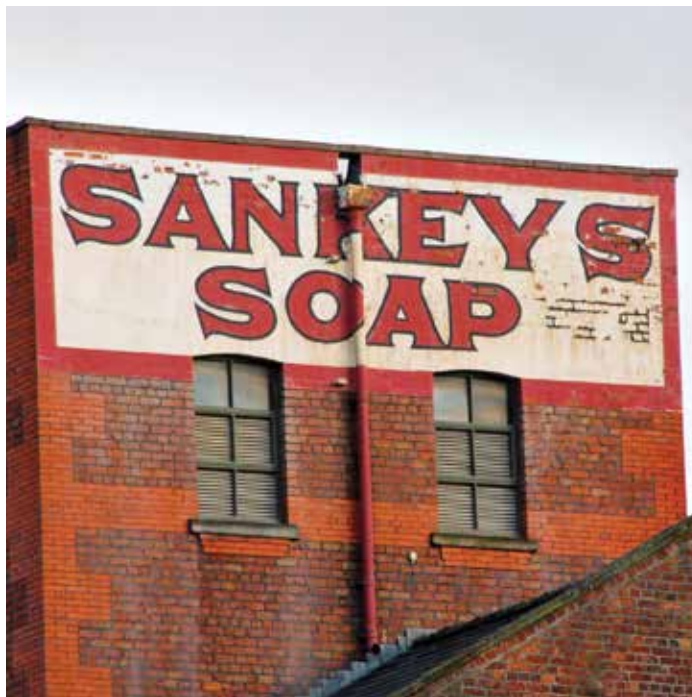
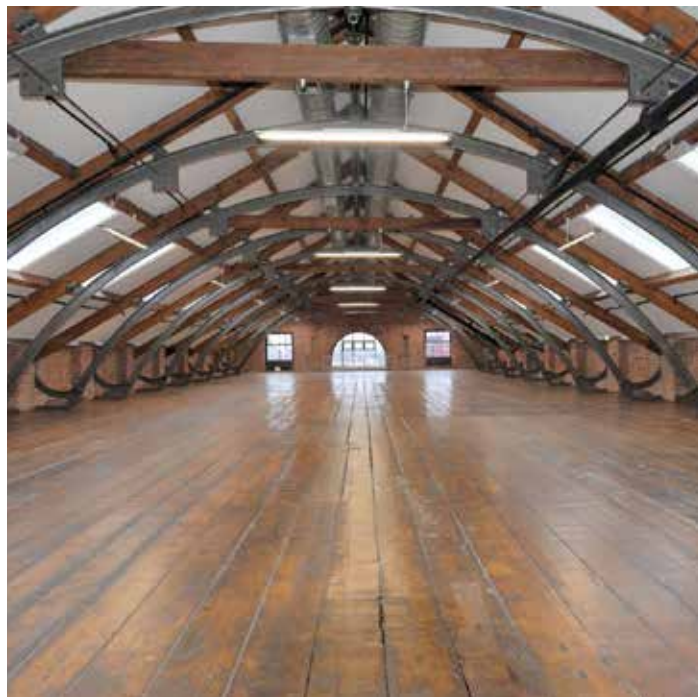
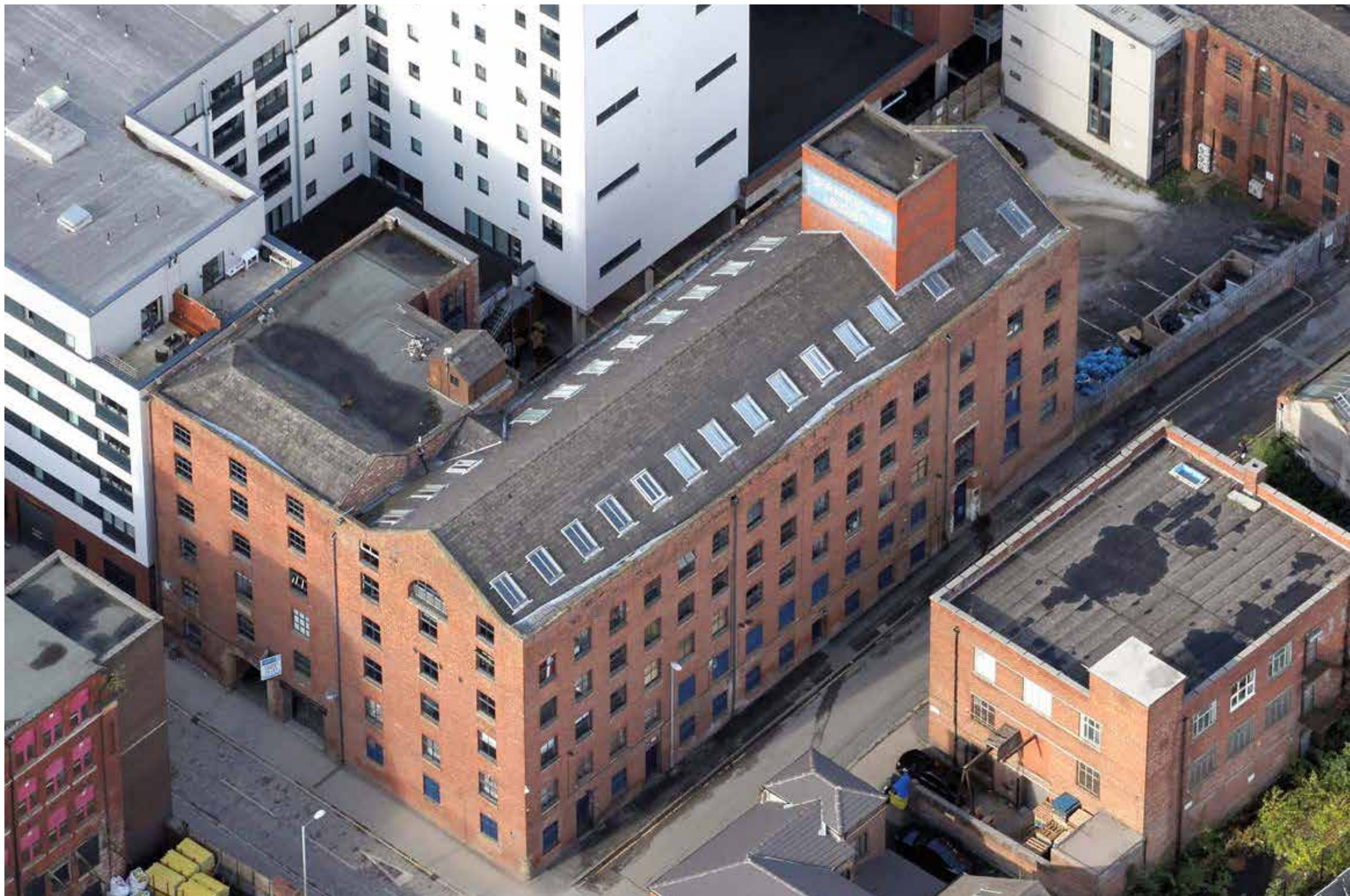
One of Manchester's long surviving cotton mills, the buildings date from 1824. It's certainly a unique offer, character spaces, full of functionality & retained features blasted brickwork, pitched roof with exposed beams, original cast iron columns, wooden floor boards, fantastic ceiling heights & feature glazing - designed to maximise natural light throughout the space.

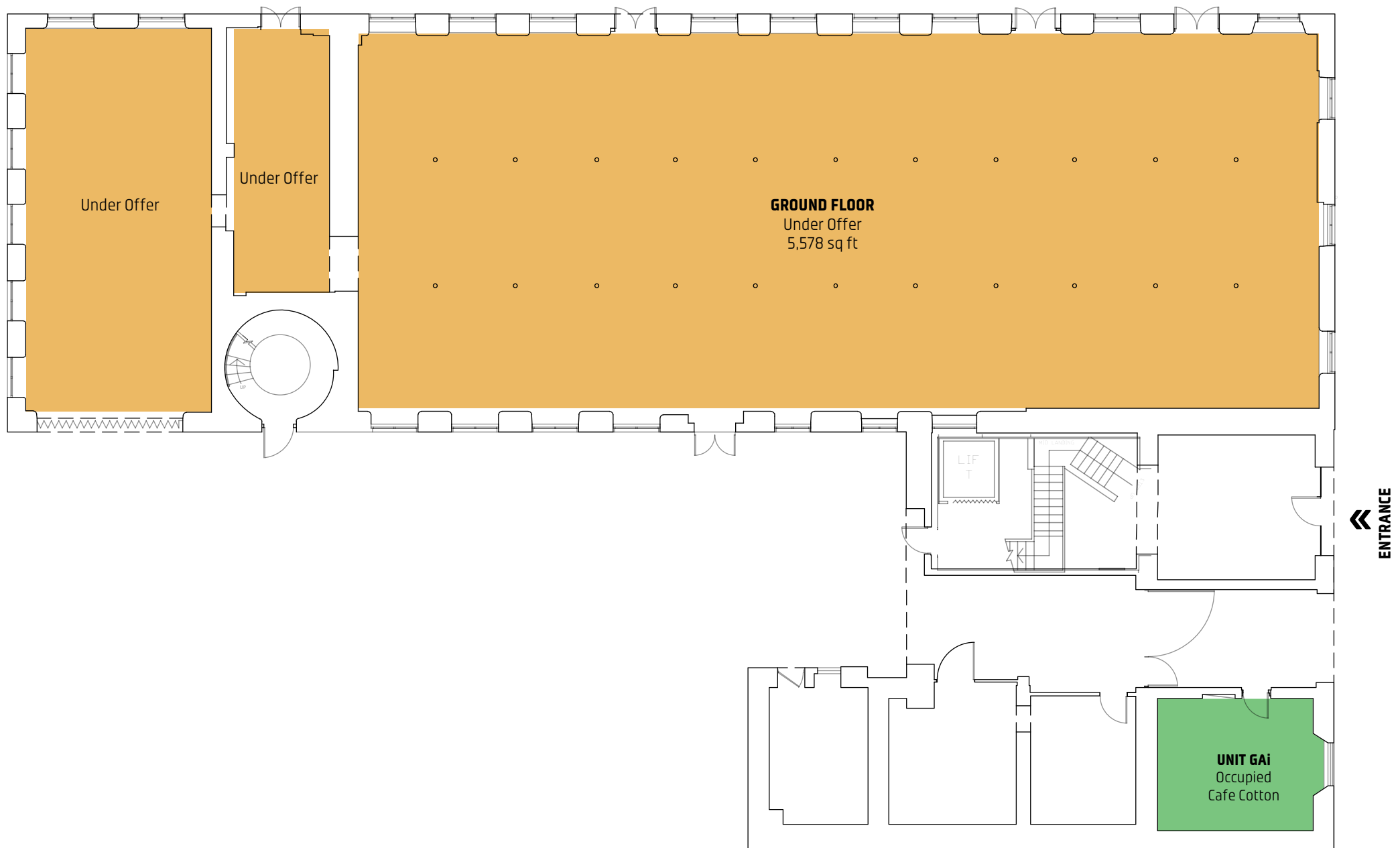
The units have all the nostalgia of an iconic mill conversion, while offering fully fitted contemporary workspace.

Beehive Mill lies at the heart of one of Manchester's largest regeneration areas set within the Ancoats Urban Village development area.

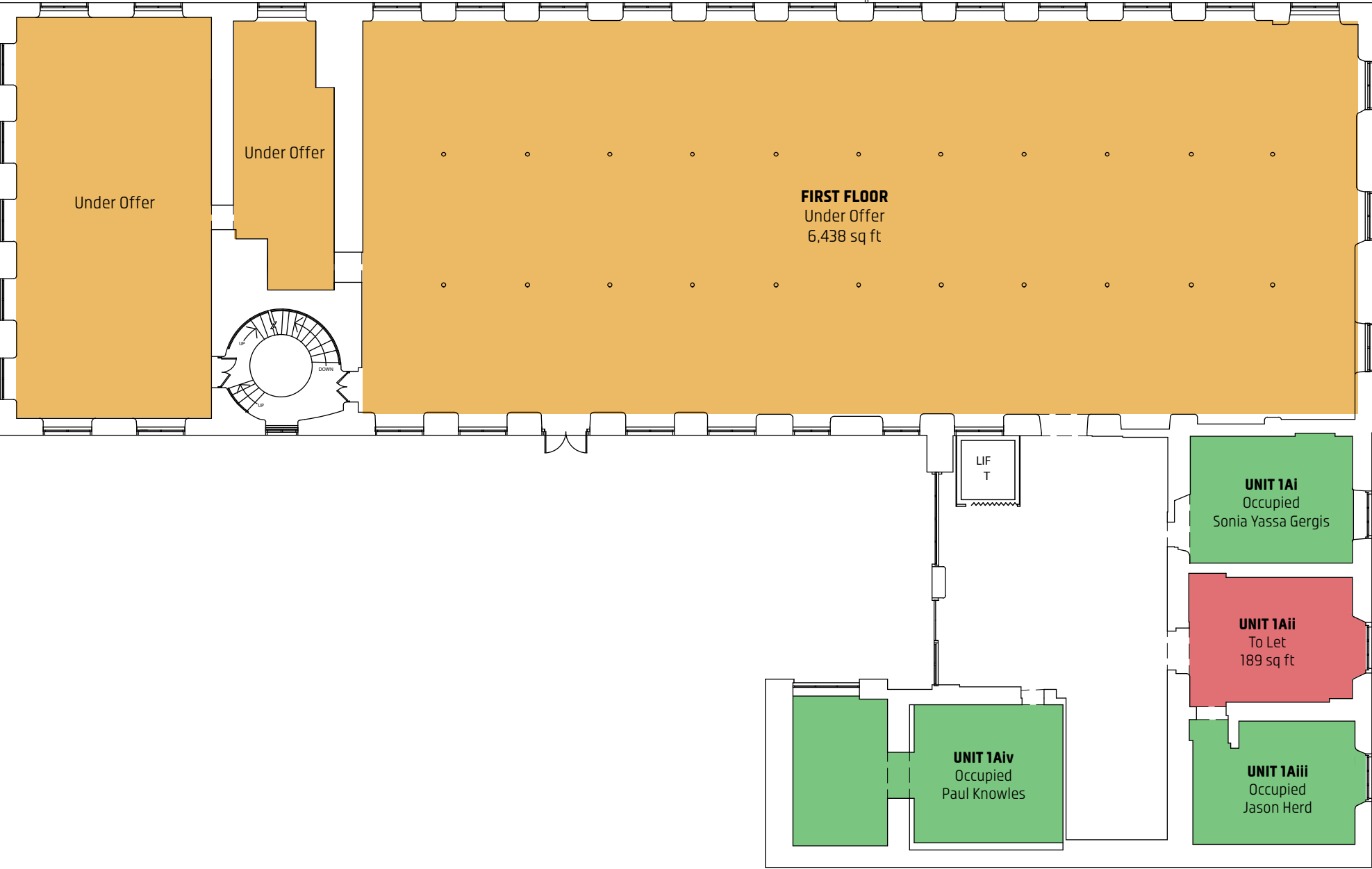
The area has seen major investment and development over recent years including an influx of creative industries and independent retailers such as Rudy's Pizza, Ancoats General Store, Kettlebell Kitchen and Seven Brothers Brewery.

Just over the Rochdale Canal is New Islington, Manchester's Millennium Community. With a number of new buildings and residential schemes now complete, along with a water park, marina and the New Islington Free School, it's one of Manchester's most exciting and vibrant places to be and was recently named one of the 20 'hippest' communities in the UK!





Beehive Mill
Indicative plans - Ground floor



Beehive Mill
Indicative plans - First floor



Beehive Mill

Indicative plans - Second floor



Beehive Mill
Indicative plans - Third floor



Beehive Mill
Indicative plans - Fourth floor



Beehive Mill
Indicative plans - Fifth floor



Computer generated image
Indicative design proposals



Computer generated image
Indicative design proposals



Computer generated image
Indicative design proposals



Computer generated image
Indicative design proposals



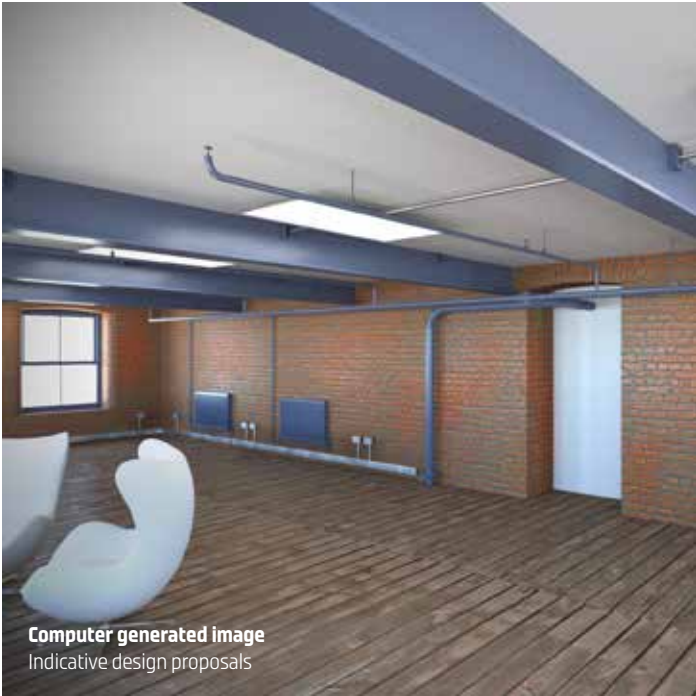
Computer generated image
Indicative design proposals



Computer generated image
Indicative design proposals



Computer generated image
Indicative design proposals



Computer generated image
Indicative design proposals

Contact details

Emily Handslip

Director of Commercial Lettings

emilyhandslip@urbansplash.co.uk

07920 562 740

Nicky Harries

Commercial Lettings Negotiator

nickyharries@urbansplash.co.uk

07968 272 691

Paul Jones

Commercial Agency Surveyor

pauljones@urbansplash.co.uk

07970 834 0741

Aimee-Jayne Cavanagh

Commercial Lettings Assistant

aimeecavanagh@urbansplash.co.uk

0333 666 0000

urbansplash