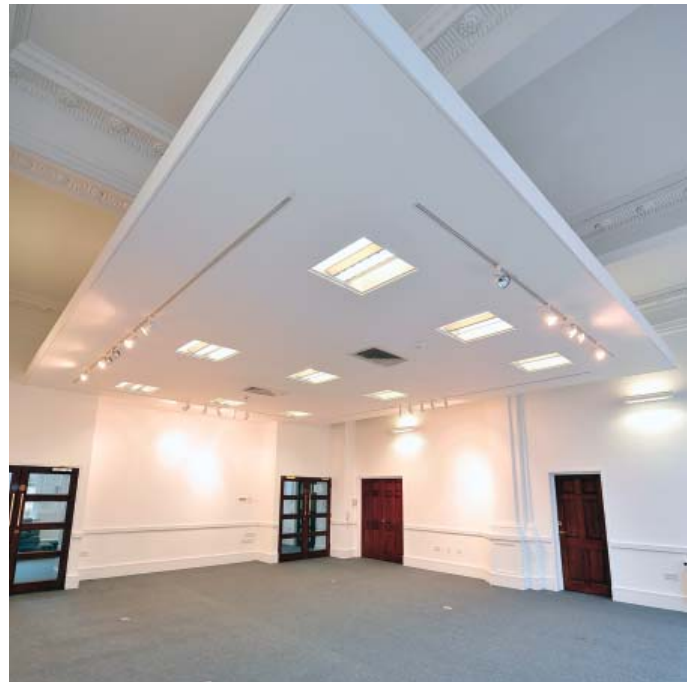


urbansplash

# Mersey House Matchworks Liverpool



**Office space  
to let**  
**119 sq ft - 885 sq ft**

Mersey House is a Grade II\* Listed Georgian-style building which sits at the entrance to the Matchworks development.

At 6,044 sq ft the building provides two floors of flexible office spaces from 119 sq ft with meeting room facilities.



**0333 666 0000**  
**commercial@urbansplash.co.uk**  
**www.urbansplash.co.uk/mersey-house**



Exterior of Mersey House

**Mersey House**  
Speke Road  
Garston  
Liverpool  
L19 2PH

Originally used as the management office by the Bryant and May match factory, Mersey House offers a more traditional option alongside the contemporary conversion of the Matchworks buildings and stunning Matchbox.

Mersey House, built in 1918, has a wealth of original character including feature fireplaces in most rooms and ornate covings.

### **Location**

Located on Speke Road, Garston, Mersey House has excellent transport links to Liverpool city centre which is just 15 minutes away. Matchworks also has easy access to the motorway network with the M57, M62 and M56 all close by. Liverpool John Lennon Airport is less than two minutes drive away and Liverpool South Parkway station is within walking distance.

» [Click here to see location map](#)



## Specification

### Finishes, fixtures and fittings

- Part air conditioned
- Carpeted and decorated

### Services

- On-site parking available
- 24 hour access
- Disabled access
- Meeting room facilities
- Inclusive monthly rents from only £220 per month

### Common areas

- Fire alarm
- Kitchen and toilet facilities

## Terms

The units are available to let on a Monthly Licence.

**Available**

## Floor areas

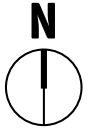
Unit number	Area (Sq ft)	Area (Sq m)
<b>Ground floor</b>		
1	155	11.39
2	119	11.05
3	129	11.98
4	328	30.47
5	157	14.59
6	142	13.19
7	173	16.07
8	885	82.21
<b>First floor</b>		
9-11	529	49.14
12	539	50.07
14	144	13.37
15	351	32.60
16	281	26.10
17	278	25.82
18	380	35.30
19	177	16.44
20	241	22.38

### Existing tenants include:

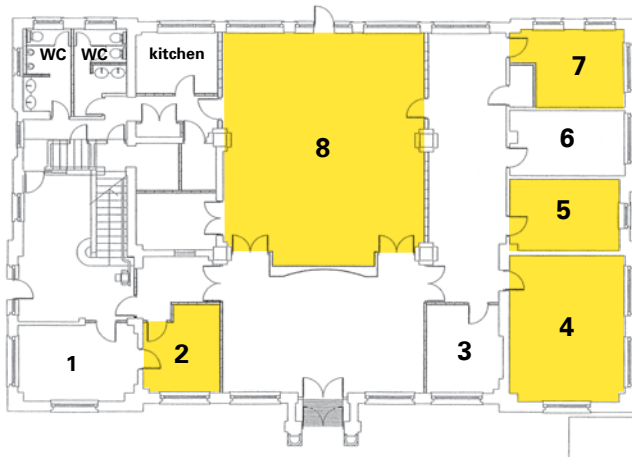
OR Education, Amanda Wright Recruitment Ltd, Education Youth Services, Mears Care Limited, SA Logistics, General Post Ltd, Il Santuario, Poppies, Palatine Accommodation Services, Handley Law Ltd



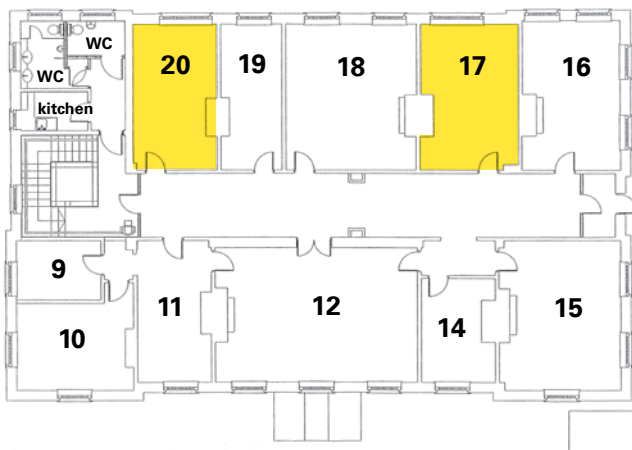
# Floor plans



## Ground floor



## First floor



 **Available**

DISCLAIMER: Urban Splash and Agents acting on their behalf give notice that:  
1. These particulars are produced in good faith, are set out as a general guide only and do not constitute part of a contract, 2. No person in the employment of Urban Splash or their Agents has any authority to make or give any representation or warranty in relation to this property, 3. Unless otherwise stated all prices and rents are quoted exclusive of VAT, 4. Date of publication January 2012