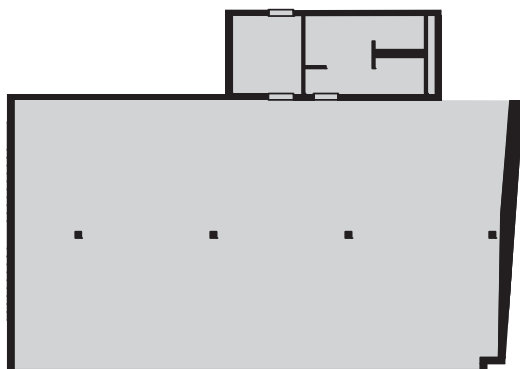


Unit 100 Vanilla Factory - Available to let

urbansplash



Typical office unit in Vanilla Factory



Unit 100 is the only self contained office in Vanilla Factory, with its own kitchen and WCs. This spacious 2,519 sq ft unit has been designed to an exceptionally high standard. Its contemporary finishes are enhanced by the floor to ceiling glazing, comfort cooling and an impressive reception / meeting area.

Address	Vanilla Factory 39 Fleet Street Liverpool L1 4AR
Use	Office
Size	2,519 sq ft (234 sq m)
TO RENT	£2,729 pcm £32,747 pa
Notes	- Service charge £3.50 per sq ft - Insurance included in rent - Short form lease or licenses available - All prices quoted exclude VAT
Contact	Nicky Harries
Telephone	0333 666 0000
Email	commercial@urbansplash.co.uk
Agent	Hitchcock Wright & Partners (Neil Kirkham)
Telephone	0151 227 3400
Email	neilkirkham@hwardp.co.uk

0333 666 0000
commercial@urbansplash.co.uk
www.urbansplash.co.uk/vanilla-factory

DISCLAIMER: Urban Splash and Agents acting on their behalf give notice that:
1. These particulars are produced in good faith, are set out as a general guide only and do not constitute part of a contract, 2. No person in the employment of Urban Splash or their Agents has any authority to make or give any representation or warranty in relation to this property, 3. Unless otherwise stated all prices and rents are quoted exclusive of VAT, 4. Date of publication June 2011