



7 Lakewood House, Portsmouth Road, Esher, KT10 9FB

Reads
PROPERTY









Lakewood House offers discerning buyers the opportunity to own one of 14 luxury apartments in this exclusive, secure setting.

The apartments are surrounded by three acres of private landscaped gardens including a lake, Fairmile Common is easily accessed via footpaths.

Developed to a high specification throughout, the building has been meticulously maintained. Each apartment is spacious and has been thoughtfully designed with a contemporary and stylish kitchen, bathrooms and living area complemented by underfloor heating and a comprehensive security, home entertainment and communication package. The contemporary style kitchens come complete with stone worktops, fully integrated Siemens appliances and an American style fridge/ freezer. The bathrooms are furnished with Villeroy and Boch luxury suites, thermostatically controlled showers, ceramic tiled floors, and full width polished edge mirrors above the basins.

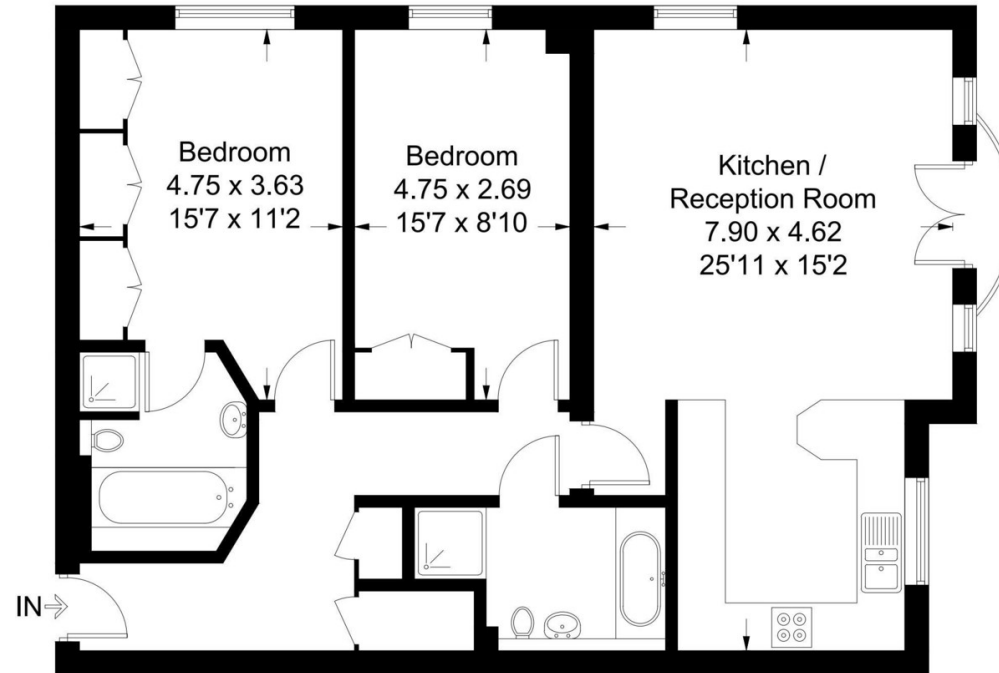
Approached from a private and gated tree-lined drive, each apartment benefits from two allocated parking spaces of which one is secure underground with lift access. There are also spacious individual storage cupboards within the parking area for each apartment.

Located on the edge of Cobham, famous for being home to the Chelsea FC training complex, and close to Esher High Street nearby attractions include Claremont Landscape Garden and Sandown Park Racecourse. Independent schools well serve the location, including ACS, Claremont Fan Court and Parkside. Cobham town centre is also close by, with shops and restaurants including the Ivy, Coppa Club and Waitrose. Conveniently located approximately 2.4 miles to Cobham and Stoke D'Abernon station and 3.4 miles to Esher station.



Lakewood, KT10

Approximate Gross Internal Area = 86.5 sq m / 932 sq ft



First Floor

Measured in accordance with RICS Code of Measuring Practice. To be used for identification and guidance purposes only.
Whilst every care is taken in the preparation of this plan, please check all dimensions, shapes and compass bearings before making any decisions reliant upon them.
www.london58.com © 2022 hello@london58.com

*This brochure, including the description, floorplans and measurements therein do not form part of any contract and whilst every effort has been made to ensure accuracy this cannot be guaranteed.