



Silverwood Avenue, Filey, YO14 0DN

- Detached Bungalow
- Corner Plot
- Wrap Around Gardens
- Wharfedale Estate
- EPC Grade: E
- Three Bedrooms
- Detached Garage & Off Road Parking
- Conservatory
- No Onward Chain

Asking Price £340,000



Silverwood Avenue, Filey, YO14 0DN

DESCRIPTION

Hunters are pleased to offer this fantastic detached bungalow for sale on the ever popular Wharfedale estate, with no onward chain. The property is situated on a generously sized corner plot with wrap around gardens, a detached single garage and ample off road parking. Wharfedale is within easy reach of Filey's town centre which offers a wide array of amenities from doctors to cafes, shops and a dentist. There are regular transport links connecting Filey to neighbouring towns and villages.

This delightful three-bedroom detached bungalow offers versatile living space and a wonderful setting for relaxation. One of the bedrooms can be easily adapted as a dining room, featuring sliding doors that open into a bright rear conservatory—perfect for entertaining or enjoying the garden views.

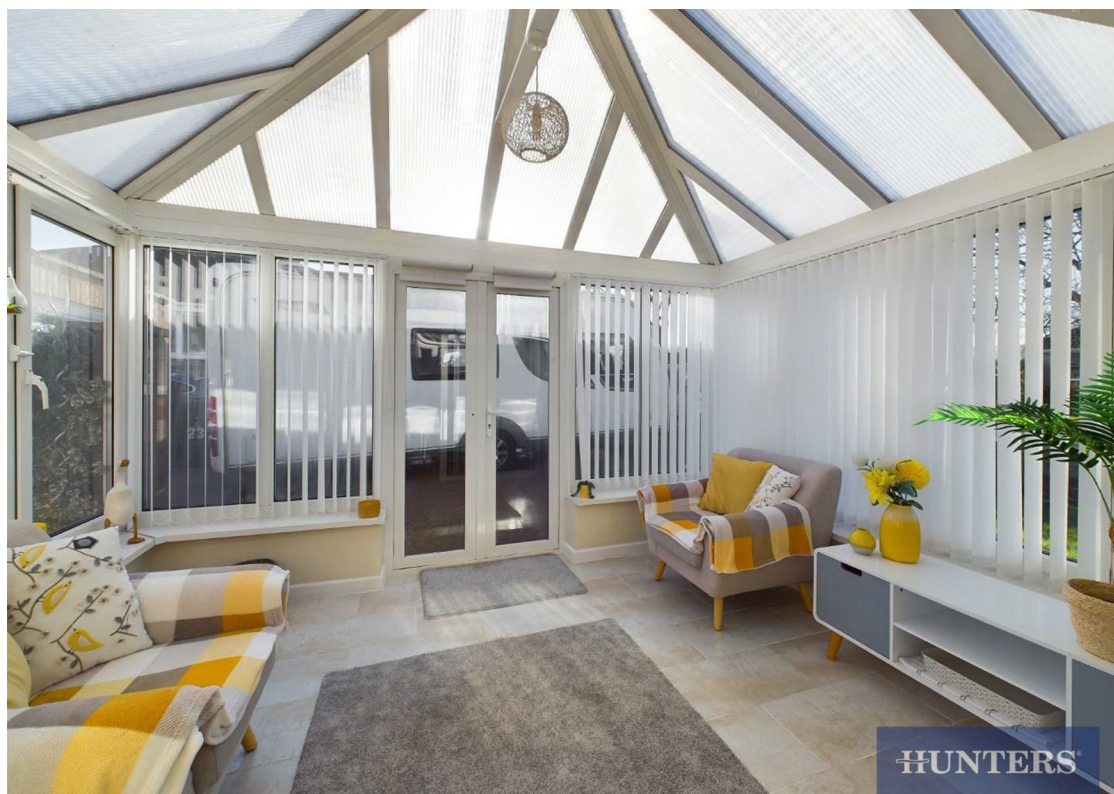
The property boasts a spacious living room and a well-proportioned kitchen, complete with a range of wall and base units, a built-in electric Smeg oven with a gas hob, and space for a washing machine and fridge freezer. The modern white three-piece bathroom includes a shower over the bath for added convenience.

Surrounding the home, the wrap-around gardens provide a mix of lawned and patio areas, creating ideal spaces for outdoor seating and leisure. With its flexible layout and charming outdoor space, this bungalow is perfect for those seeking comfort and tranquility.

The property is situated within close proximity of Filey's natural beauty spot - Filey Dams Nature Reserve - a perfect place for a tranquil walk surrounded by wildlife.

We are sure this property will be popular and we encourage an early viewing to appreciate all that's on offer. Call us now to arrange your appointment!







Approximate total area⁽¹⁾
966.27 ft²
89.77 m²

(1) Excluding balconies and terraces.

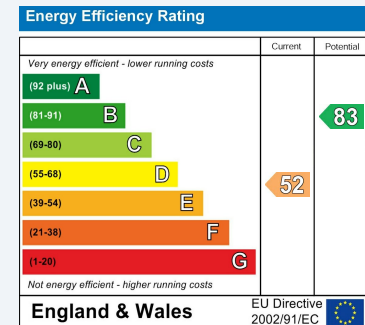
While every attempt has been made to ensure accuracy, all measurements are approximate, not to scale. This floor plan is for illustrative purposes only.

Calculations were based on RICS IPMS 3C standard. Please note that calculations were adjusted by a third party and therefore may not comply with RICS IPMS 3C.

GIRAFFE360

ENERGY PERFORMANCE CERTIFICATE

The energy efficiency rating is a measure of the overall efficacy of a home. The higher the rating the more energy efficient the home is and the lower the fuel bills will be.



These particulars are intended to give a fair and reliable description of the property but no responsibility for any inaccuracy or error can be accepted and do not constitute an offer or contract. We have not tested any services or appliances (including central heating if fitted) referred to in these particulars and the purchasers are advised to satisfy themselves as to the working order and condition. If a property is unoccupied at any time there may be reconnection charges for any switched off/disconnected or drained services or appliances - All measurements are approximate.

THINKING OF SELLING? If you are thinking of selling your home or just curious to discover the value of your property, Hunters would be pleased to provide free, no obligation sales and marketing advice. Even if your home is outside the area covered by our local offices we can arrange a Market Appraisal through our national network of Hunters estate agents.

Viewings

Please contact filey@hunters.com, if you wish to arrange a viewing appointment for this property or require further information.

Valuations

For a valuation of your property, please email the team with your property details, contact information and the times you are available.