



Windmill Drive, Filey, YO14 0FD

- Semi Detached House
- Three Bedrooms
- Off Road Parking
- Rear Garden
- Modern Interior
- EPC Grade - C

Offers Over £210,000



Windmill Drive, Filey, YO14 0FD

DESCRIPTION

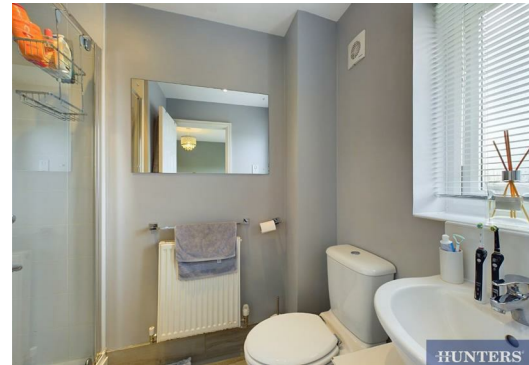
Welcome to this stunning three bedroom semi-detached modern house, perfectly designed for contemporary living. Situated in a sought-after residential area, this beautiful home offers a harmonious blend of style, comfort, and practicality. Being located within close proximity of Filey secondary school, along with two primary schools, this is would make a fantastic family home. Filey offers ample amenities such as shops, cafes, a dentist and a doctors surgery alongside numerous parks and the award winning Filey beach. There are also regular transport links to neighbouring towns and villages.

As you enter the property, you are greeted by an entrance hall with door to both the downstairs WC and spacious living room. The living room has a large window to the front providing plenty of natural light, a feature electric fireplace and access to the kitchen/diner at the rear. The kitchen is modern and offers both wall and base units providing a gas hob and electric oven, space for a fridge/freezer and plumbing for a washing machine. The kitchen boasts a great space for a dining table, creating the perfect environment for when friends and family come over!

As you ascend upstairs, there are three well-appointed bedrooms. The main bedroom features an ensuite bathroom, offering a private retreat for relaxation. The additional bedrooms are versatile and can be adapted to suit your needs, whether as guest rooms, children's rooms, or home offices.

The modern family bathroom serves the remaining bedrooms, providing comfort and convenience for the whole family.

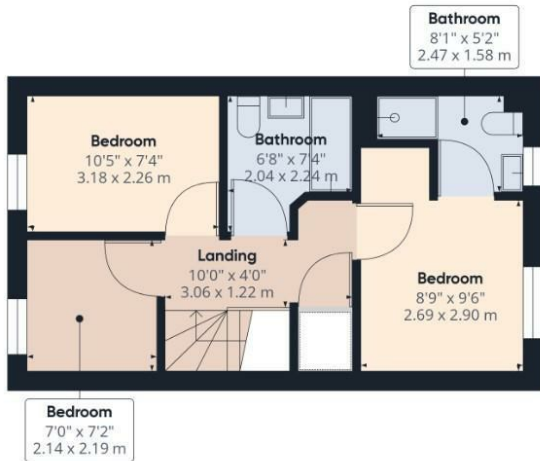
The property is complemented by a generously sized rear garden. Perfect for outdoor entertaining, gardening, or simply unwinding in the fresh air, this space offers endless possibilities for enjoyment. Mainly laid to lawn with both a patio and decked area, this property also features a summerhouse and a shed. There is also off-road parking available so you'll have peace of mind knowing your vehicle is securely accommodated!







Ground Floor



Floor 1

Approximate total area⁽¹⁾
737.33 ft²
68.5 m²

(1) Excluding balconies and terraces

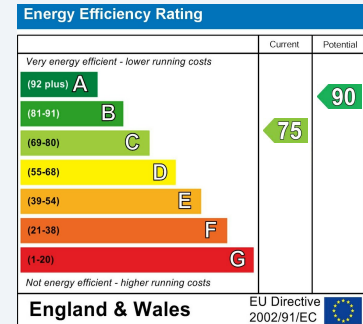
While every attempt has been made to ensure accuracy, all measurements are approximate, not to scale. This floor plan is for illustrative purposes only.

Calculations are based on RICS IPMS 3C standard.

GIRAFFE360

ENERGY PERFORMANCE CERTIFICATE

The energy efficiency rating is a measure of the overall efficacy of a home. The higher the rating the more energy efficient the home is and the lower the fuel bills will be.



These particulars are intended to give a fair and reliable description of the property but no responsibility for any inaccuracy or error can be accepted and do not constitute an offer or contract. We have not tested any services or appliances (including central heating if fitted) referred to in these particulars and the purchasers are advised to satisfy themselves as to the working order and condition. If a property is unoccupied at any time there may be reconnection charges for any switched off/disconnected or drained services or appliances - All measurements are approximate.

THINKING OF SELLING? If you are thinking of selling your home or just curious to discover the value of your property, Hunters would be pleased to provide free, no obligation sales and marketing advice. Even if your home is outside the area covered by our local offices we can arrange a Market Appraisal through our national network of Hunters estate agents.

Viewings

Please contact filey@hunters.com, if you wish to arrange a viewing appointment for this property or require further information.

Valuations

For a valuation of your property, please email the team with your property details, contact information and the times you are available.