



South Lane, Burton Fleming

YO25 3PG



Guide Price £375,000

HUNTERS[®]
EXCLUSIVE

South Lane, Burton Fleming

DESCRIPTION

Welcome to this charming detached bungalow located on South Lane in the picturesque village of Burton Fleming, near Driffield. This lovely property has undergone extensive renovations and boasts two reception rooms, perfect for entertaining guests or simply relaxing with your family. With three cosy bedrooms, there's plenty of space for everyone to unwind and enjoy a good night's sleep.

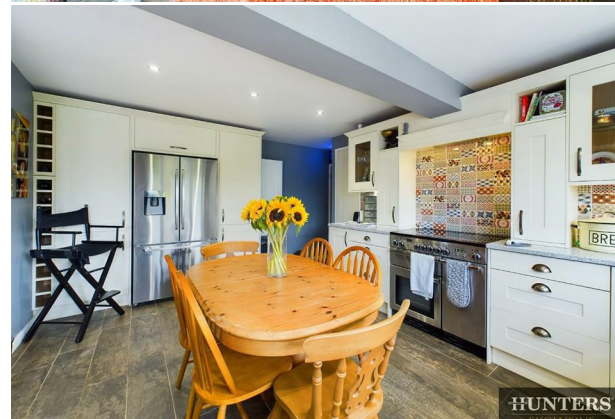
As you enter the property, you are welcomed by a light and airy entrance hall. There is a well-appointed living room with electric feature fireplace and dual aspect windows, along with an exceptional open plan kitchen/dining room with additional living area to the side with bi-fold doors to the garden. The kitchen offers underfloor heating, instant hot water tap, wine cooler and integrated dishwasher and washing machine.

There are two double bedrooms and a good sized third bedroom, currently being used as a dressing room. The property features a well-maintained and modern four piece suite bathroom with underfloor heating, corner shower unit, freestanding bath, low level WC and sink with vanity unit. This bathroom ensures your daily routines are both convenient and comfortable. Additionally, the detached nature of this bungalow offers a sense of privacy and tranquillity that is truly unmatched.

This property offers ample off road parking and a garage, making it easy for you and your guests to park without any hassle. The garage benefits from an up and over door, power and lighting. Whether you're a car enthusiast or simply value the convenience of off-road parking, this feature is sure to impress.

The highlight of this property is the stunning gardens, with patio area for seating and garden room to the rear with bi-fold doors and power.

Overall, this delightful bungalow in Burton Fleming presents a wonderful opportunity for anyone looking to settle down in a peaceful and welcoming community. Don't miss out on the chance to make this property your own!





HUNTERS



HUNTERS



HUNTERS



HUNTERS

HUNTERS[®]
EXCLUSIVE



Approximate total area⁽¹⁾
1543.01 ft²
143.35 m²

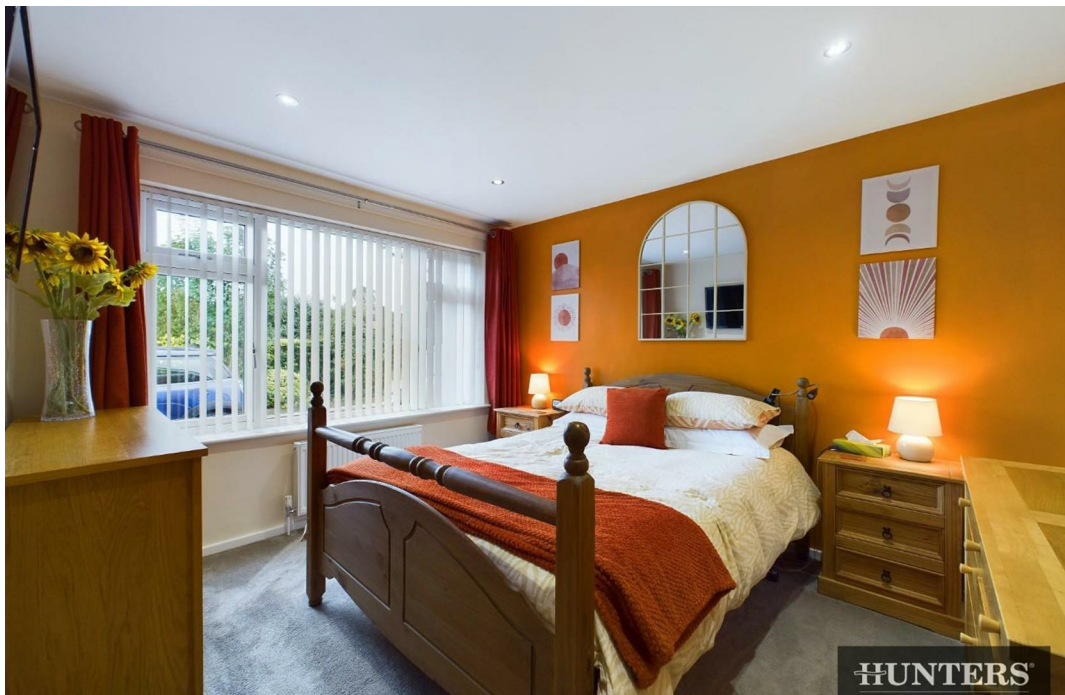
(1) Excluding balconies and terraces

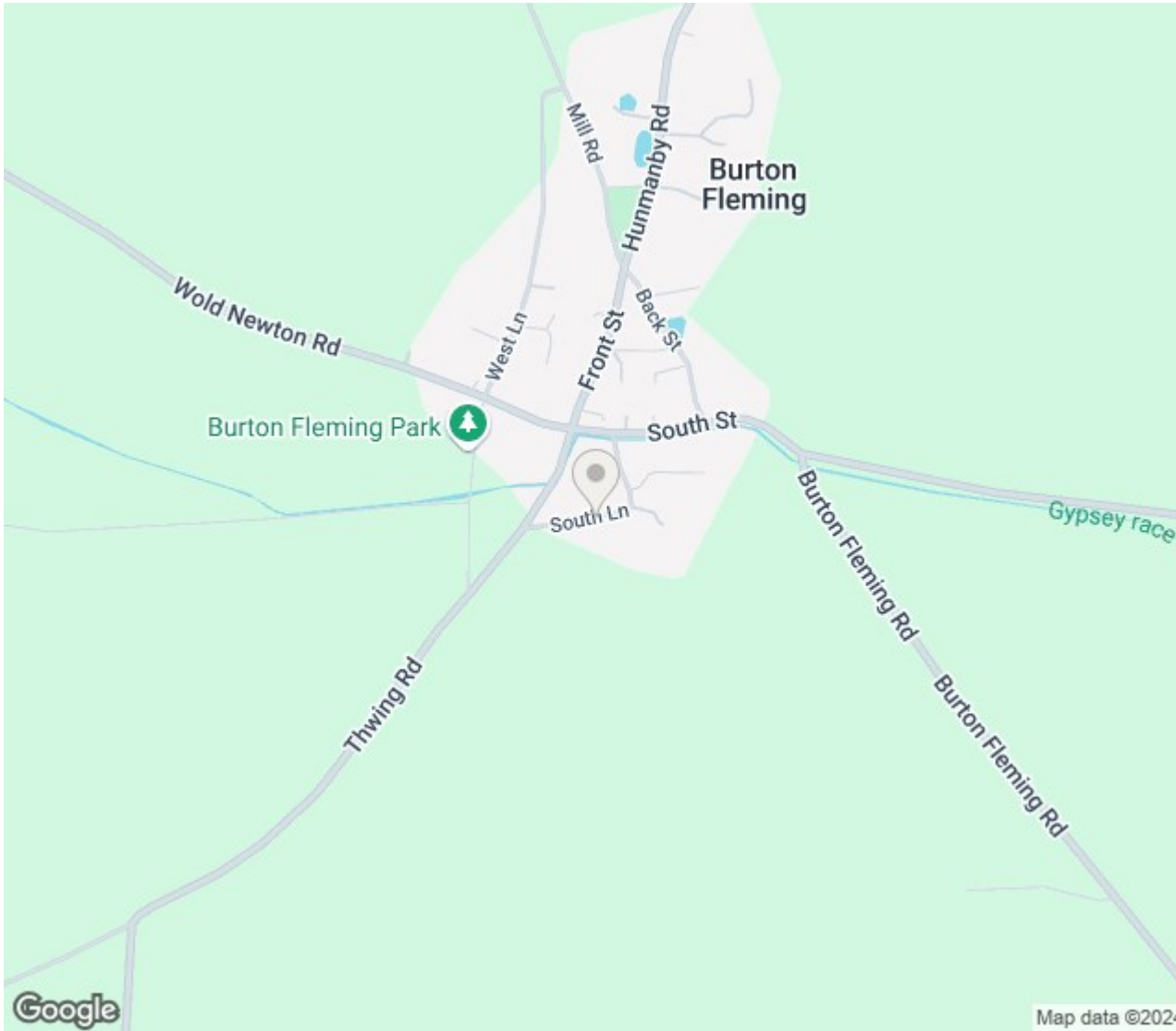
While every attempt has been made to ensure accuracy, all measurements are approximate, not to scale. This floor plan is for illustrative purposes only.

Calculations are based on RICS IPMS 3C standard.

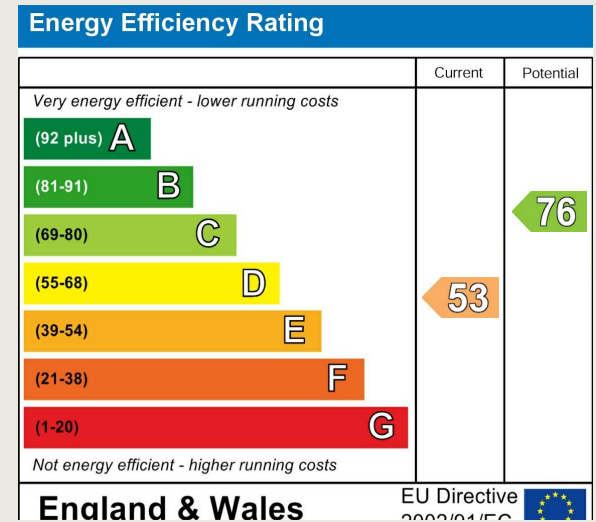
GIRAFFE360







ENERGY PERFORMANCE CERTIFICATE



Thinking of Selling?

If you are thinking of selling your home or just curious to discover the value of your property, Hunters would be pleased to provide free, no obligation sales and marketing advice. Even if your home is outside the area covered by our local offices we can arrange a Market Appraisal through our national network of Hunters estate agents.

7a Murray Street, Filey, YO14 9DA | 01723 338958 | filey@hunters.com

