



## Discovery Way, The Bay, Filey, YO14 9GY

- Detached Lodge
- En-suite
- No Onward Chain
- Two Bedrooms
- Investment Opportunity
- EPC Grade C

**Offers Over £170,000**





# Discovery Way, The Bay, Filey, YO14 9GY - Offers Over £170,000

## DESCRIPTION

Hunters are delighted to bring to the market this immaculately presented detached lodge, situated within the award-winning Bay Holiday Village. Renowned for its superb coastal setting,

The Bay offers direct access to the beach along with an excellent range of on-site amenities including a leisure complex, gym, tennis court, beauty room, shop and a selection of eateries, creating the perfect blend of relaxation and convenience.

The lodge has recently undergone redecoration throughout, further enhancing its modern and well-maintained interior. In addition, a number of important regulatory upgrades have been completed, including new internal fire doors, hard-wired smoke alarms, and emergency lighting installed, providing peace of mind for both owners and guests.

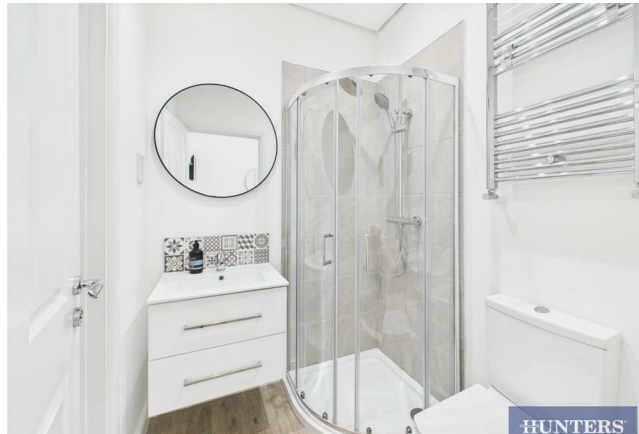
Internally, the accommodation briefly comprises an open-plan living, dining and kitchen area, offering a bright and welcoming space ideal for both everyday living and entertaining. The contemporary kitchen is well-equipped with integrated appliances, including a fridge/freezer, oven, hob, microwave and dishwasher.

The main bedroom benefits from an en-suite shower room, featuring a walk-in shower, low-flush WC and wash hand basin. A second bedroom provides fitted wardrobe space, and a family bathroom finished to a high standard.

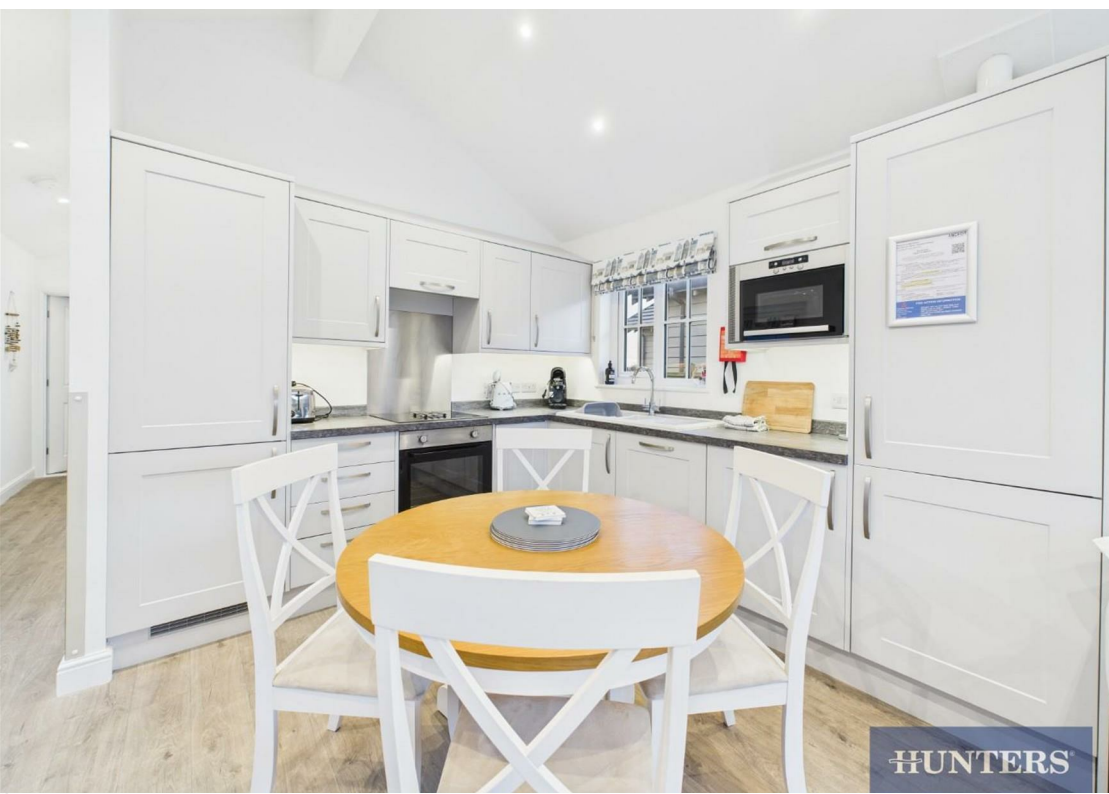
Externally, the lodge enjoys a private decking area, perfect for outdoor dining and relaxation, along with a ramped access, making the property suitable for accessible use.

This beautifully presented lodge would make an ideal second home or a fantastic investment opportunity in a sought-after coastal location.

Call now to arrange your viewing or for further information.

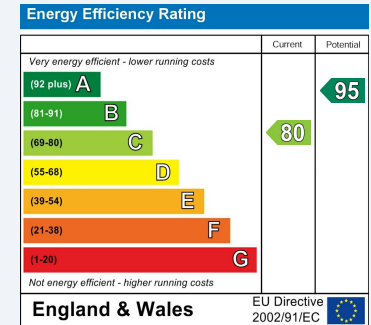






## ENERGY PERFORMANCE CERTIFICATE

The energy efficiency rating is a measure of the overall efficacy of a home. The higher the rating the more energy efficient the home is and the lower the fuel bills will be.



These particulars are intended to give a fair and reliable description of the property but no responsibility for any inaccuracy or error can be accepted and do not constitute an offer or contract. We have not tested any services or appliances (including central heating if fitted) referred to in these particulars and the purchasers are advised to satisfy themselves as to the working order and condition. If a property is unoccupied at any time there may be reconnection charges for any switched off/disconnected or drained services or appliances - All measurements are approximate.

**THINKING OF SELLING?** If you are thinking of selling your home or just curious to discover the value of your property, Hunters would be pleased to provide free, no obligation sales and marketing advice. Even if your home is outside the area covered by our local offices we can arrange a Market Appraisal through our national network of Hunters estate agents.

Approximate total area\*  
534.47 ft<sup>2</sup>  
49.65 m<sup>2</sup>

Excluding balconies and terraces

While every attempt has been made to ensure accuracy, all measurements are approximate, not to scale. This floor plan is for illustrative purposes only.

GIRAFFE360

### Viewings

Please contact [filey@hunters.com](mailto:filey@hunters.com), if you wish to arrange a viewing appointment for this property or require further information.

### Valuations

For a valuation of your property, please email the team with your property details, contact information and the times you are available.