



87 Creed Road

Oundle PE8 4QX

Offers in the region of £290,000



4



2



1



87 Creed Road

Oundle PE8 4QX

Very well presented semi detached townhouse on Creed Road, Oundle.

This property comprises of;

Ground Floor- entrance hall, w/c, kitchen/breakfast room, lounge/diner with double doors to the garden.

First Floor- landing, bedrooms two, three and four, bedroom two benefitting from built in wardrobes, family bathroom.

Second Floor- landing, bedroom one, en suite and a walk in wardrobe.

Outside- parking to the front, side access. To the rear, an enclosed garden mainly laid to lawn.

This property has to be viewed to be appreciated.

Tenure: Freehold
Council Tax Band: D





Ground Floor

Entrance Hall

Kitchen/Breakfast Room
13'10" x 9'1" (4.24m x 2.78m)

Lounge/Diner
16'3" max x 11'10" max (4.97m max x 3.62m max)

W/C



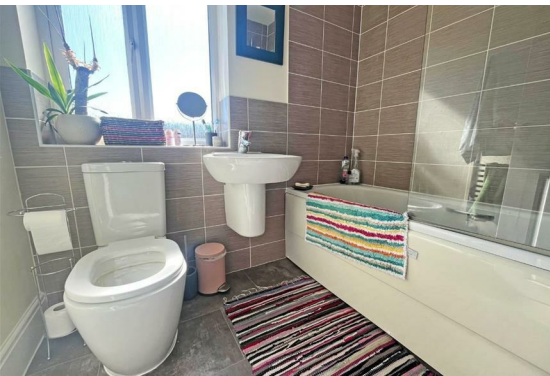
First Floor

Landing

Bedroom Two
11'4" x 9'1" (3.46m x 2.79m)

Bedroom Three
12'6" max x 9'1" max (3.83m max x 2.79m max)

Bedroom Four
7'9" x 6'8" (2.37m x 2.05m)



Second Floor

Bedroom One
16'3" max x 12'10" max (4.96m max x 3.92m max)

En Suite

Walk in Wardrobe



Floor Plan



Viewing

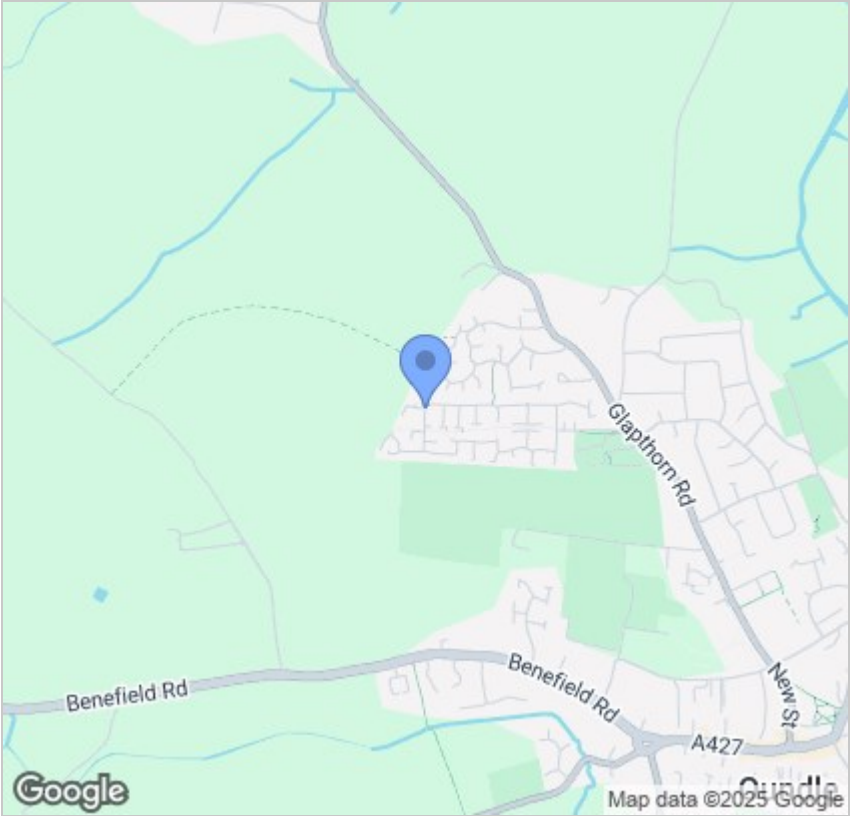
Please contact our Orton Office on 01733 852257 if you wish to arrange a viewing appointment for this property or require further information.

These particulars, whilst believed to be accurate are set out as a general outline only for guidance and do not constitute any part of an offer or contract. Intending purchasers should not rely on them as statements of representation of fact, but must satisfy themselves by inspection or otherwise as to their accuracy. No person in this firms employment has the authority to make or give any representation or warranty in respect of the property.



48b Church Drive, Orton Waterville
Peterborough, PE2 5HE
T: 01733 852257
E: orton@firminandco.co.uk

Area Map



Energy Efficiency Graph

