



High Road, Epping, CM16

BUTLER  STAG



Available to rent in the Epping is this beautifully presented four-bedroom detached family home. Offering generous living space across approximately 1,671 sq. ft. Ideal for families seeking both comfort and convenience, the property is set within easy reach of Epping Forest, local amenities, and excellent transport links.



- Newly Refurbished
- Great Location
- New Kitchen
- Four Bedroom House
- Spacious
- Brand New Carpet

The ground floor features a welcoming entrance hall that leads into a bright and spacious 27ft lounge, perfect for relaxing and entertaining. A separate formal dining room sits adjacent to a modern kitchen, which flows through to a large conservatory – a perfect spot for informal dining or a second lounge area with views over the garden. A guest WC is also located on this level for added convenience.

Upstairs, the property offers four well-proportioned double bedrooms, all of which include built-in wardrobes. The principal bedroom benefits from a private en-suite shower room, while two additional bedrooms share a family bathroom. A fourth double bedroom is served by a stylish bathroom, completing the upper floor layout.

Finished to a high standard throughout, this property combines generous living space with flexible layout options, making it a superb rental opportunity in a highly sought-after location.

Located close to the centres of Epping, Loughton and Theydon Bois, with all of the amenities they offer including shops, restaurants and bars. Ideal for commuters and those wishing to travel further afield, Forest Lodge lies closely-equidistant to three Central Line stations, with a journey time to London Liverpool Street in around thirty-five minutes. Conveniently positioned near the M25, M11, A10 and A12, Stansted Airport is within easy reach.

Council Tax Band G





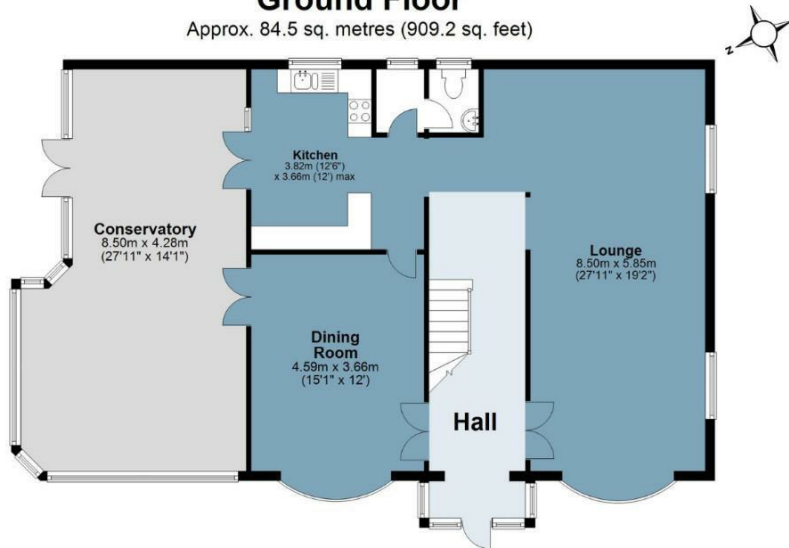
High Road

Approx. Gross Internal Area 155.3 sq. metres (1671.6 sq. feet)

BUTLER & STAG

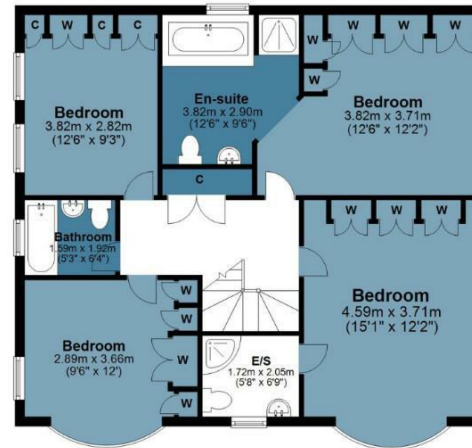
Ground Floor

Approx. 84.5 sq. metres (909.2 sq. feet)



First Floor

Approx. 70.8 sq. metres (762.4 sq. feet)



Measurements are approximate and for illustration purposes only. While we do not doubt the accuracy and completeness, we advise you conduct a careful independent assessment of the property to determine monetary value
© @modephoto.uk www.modephoto.co.uk

IMPORTANT NOTICE - These particulars have been prepared in good faith and they are not intended to constitute part of an offer or contract. We have not performed a structural survey on this property and the services, appliances and specific fittings have not been tested. All photographs, measurements, floor plans and distances referred to are given as a guide and should not be relied upon.

BUTLER & STAG

☎ 01992 667666

🏠 4 Forest Drive, Theydon Bois, Essex, CM16 7EY

✉ theydon@butlerandstag.com

www.butlerandstag.uk