



Hemnall Street, Epping, CM16

BUTLER  STAG





# The Entire Top Floor In One of Five Compact, One Bedroom Apartments Located In The Heart of Epping High Street.

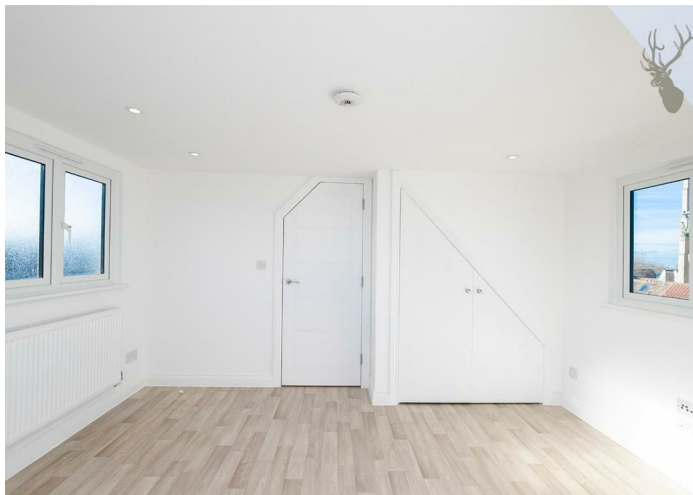


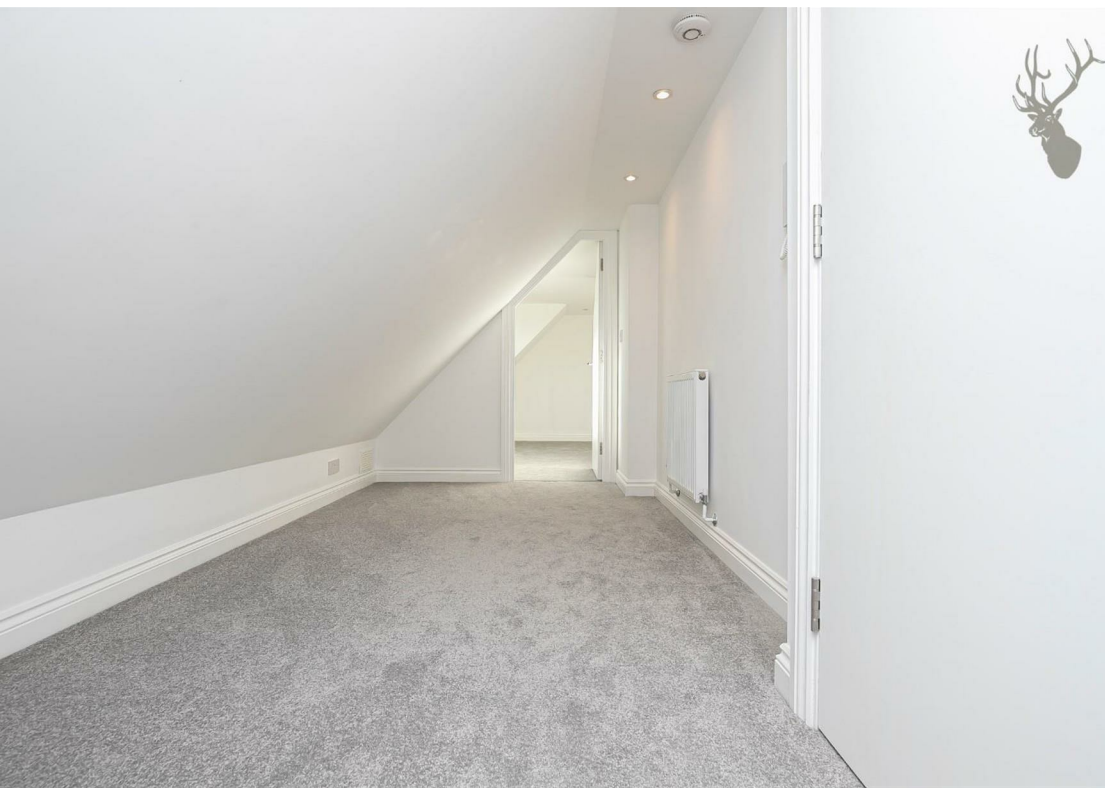
- Entire Top Floor Apartment
- Full Fitted Kitchen
- Great Location
- One Double Bedroom
- Walking Distance To Epping Station
- Private Communal Garden

The apartments have been designed thoughtfully with a modern, busy lifestyle in mind. The top floor apartment includes one double bedroom with a separate fully-fitted kitchen with integrated appliances, fitted shower rooms and a communal garden.

Feel connected to every part of the electric lifestyle Epping has to offer. Clasper House stands in the very heart of the town centre, meaning you are a short stroll away from all the bars, restaurants and shops the community has to offer. As a cultural hub, Epping has great links to London via the Central Line and motorways nearby, making it easy to work and socialise in the capital.

Council Tax Band B

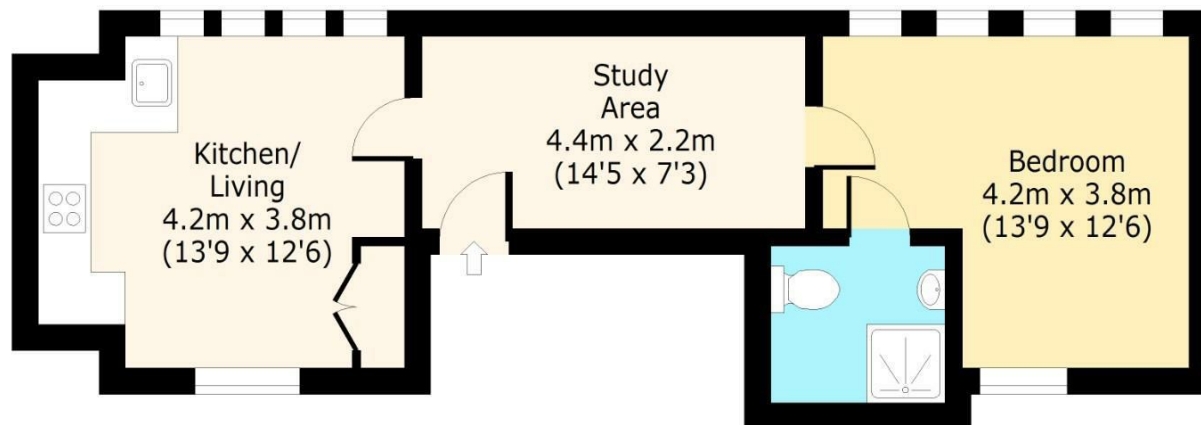




# Clasper House

## Second Floor

Approx. 43.24 Sq. meters (465 Sq. feet)



Total area: approx. 43.24 Sq. meters (465 Sq. feet)

For illustration purposes only - not to scale

[www.lpaplus.com](http://www.lpaplus.com)

**BUTLER & STAG**

☎ 01992 667666

🏠 4 Forest Drive, Theydon Bois, Essex, CM16 7EY

✉ [theydon@butlerandstag.com](mailto:theydon@butlerandstag.com)

[www.butlerandstag.uk](http://www.butlerandstag.uk)

IMPORTANT NOTICE - These particulars have been prepared in good faith and they are not intended to constitute part of an offer or contract. We have not performed a structural survey on this property and the services, appliances and specific fittings have not been tested. All photographs, measurements, floor plans and distances referred to are given as a guide and should not be relied upon.