



Bedlars Green, Bishop's Stortford, CM22

BUTLER & STAG



Nestled on a tranquil, secluded road in Bedlars Green, Bishop's Stortford, this stunning and uniquely designed home has recently undergone a complete renovation, offering over 6,800 sq ft of luxurious living space spread across three floors.



Freehold

- Newly-Renovated Detached Home
- Spanning over 6,800 Sq Ft
- Six Bedrooms/Six Bathrooms
- Stunning Throughout
- Heated Indoor Swimming Pool
- Cinema Room & Bar

Privately gated and with driveway parking for numerous vehicles, this property epitomizes modern comfort and convenience, featuring wired smart technology, an alarm system with connected CCTV, and a gate entry system for enhanced security.

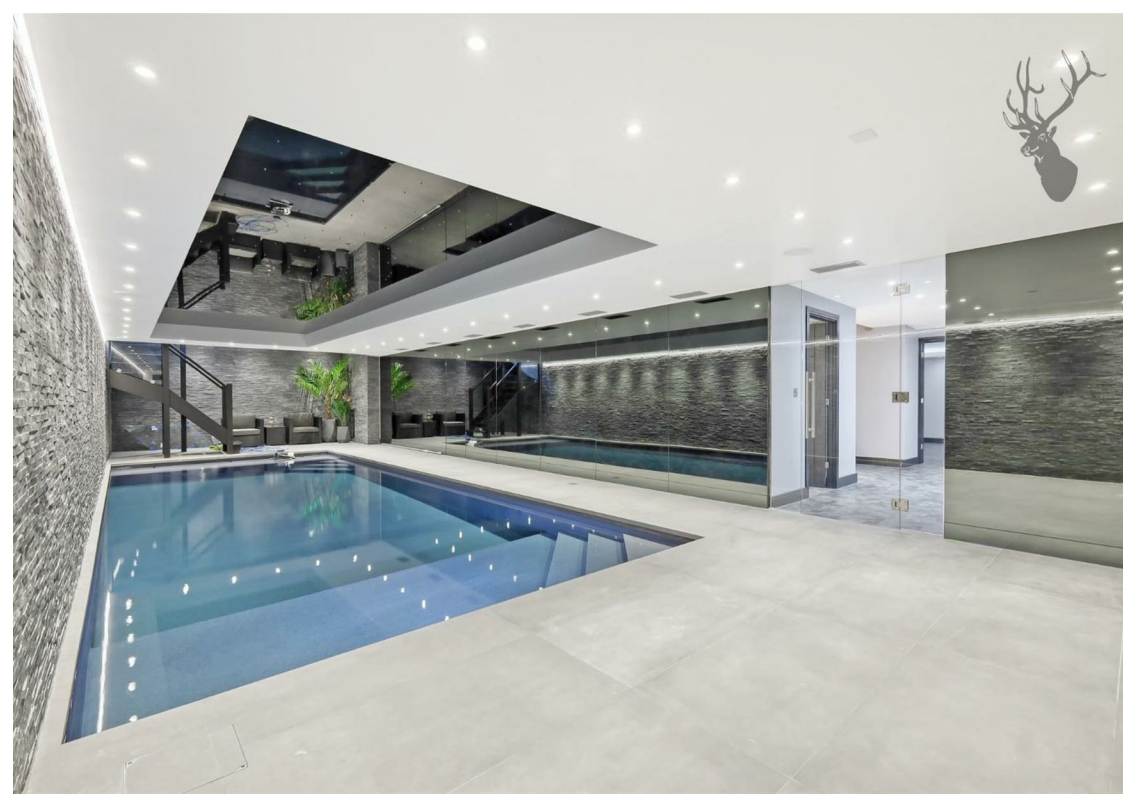
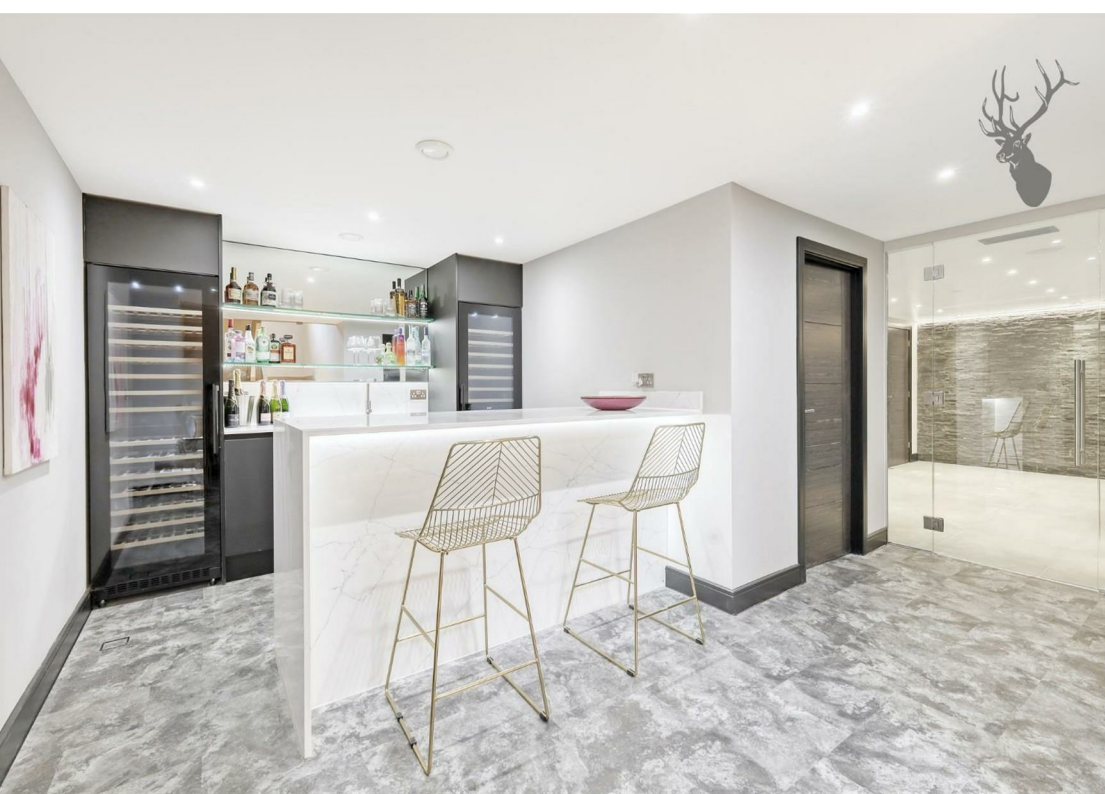
Upon entering through the grand primary staircase adorned with dazzling centerpiece lights, you are greeted by a spacious layout designed for seamless living. To the right, the expansive kitchen features four fitted Miele ovens, a Miele coffee machine, a fully integrated dishwasher and fridge freezer, a large wine fridge, and a hot water tap. The kitchen seamlessly flows into the dining area, where 270-degree bi-fold doors open effortlessly to connect indoor dining with the garden. The ground floor also boasts modern insulation levels and underfloor heating, ensuring warmth and energy efficiency.

Adjacent to the kitchen area, you will find a utility room, bathroom, and a versatile study/bedroom. On the opposite side of the ground floor, there is a convenient WC and a lounge area leading to a formal reception room, perfect for entertaining guests, with the added charm of a solid fuel fire.

Ascending the stairs, you reach a large seating area that serves as a central hub on this floor. The first floor comprises four generously sized double bedrooms, each equipped with fitted wardrobes. Two family bathrooms cater to the needs of the bedrooms, while the master bedroom boasts an additional en-suite bathroom featuring his and hers sinks, as well as separate walk-in wardrobes.

The lower level is a haven for entertainment enthusiasts, featuring an array of amenities. Highlights include a large integrated bar with fridge and dishwasher, a cinema room for immersive viewing experiences, and a bedroom with an en-suite bathroom. Completing the entertainment package is a swimming pool and sauna.





Hallington Wood

Approx. Gross Internal Area 637.7 sq. metres 6863.7 sq. feet)



Measurements are approximate and for illustration purposes only. While we do not doubt the accuracy and completeness, we advise you conduct a careful independent assessment of the property to determine monetary value
© @modephotouk www.modephoto.co.uk



☎ 01992 667666

🏠 4 Forest Drive, Theydon Bois, Essex, CM16 7EY

✉ theydon@butlerandstag.com

www.butlerandstag.uk

IMPORTANT NOTICE - These particulars have been prepared in good faith and they are not intended to constitute part of an offer or contract. We have not performed a structural survey on this property and the services, appliances and specific fittings have not been tested. All photographs, measurements, floor plans and distances referred to are given as a guide and should not be relied upon.