



Kilnfield, Ongar, CM5

BUTLER & STAG



Guide Price £375,000 - £400,000

This charming two-bedroom semi-detached house is nestled in a tranquil cul-de-sac in Ongar Town, offering a peaceful retreat while being within walking distance of the vibrant high street and the highly rated Chipping Ongar Primary School.



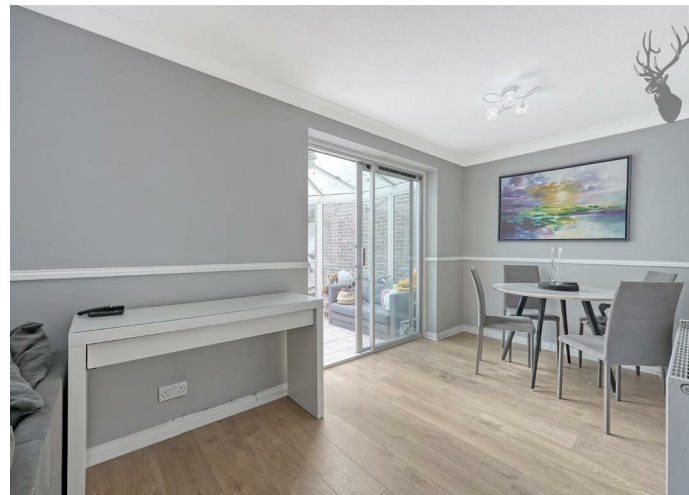
Freehold

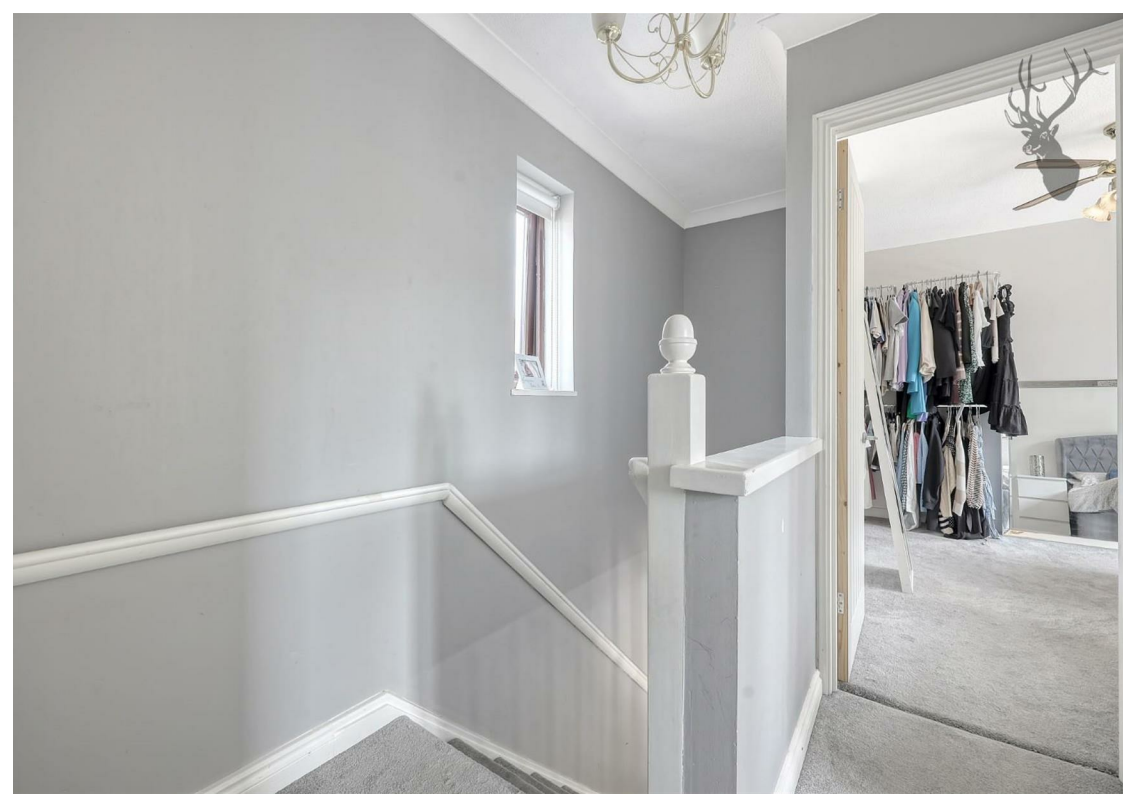
- Semi Detached Home
- Two Bedrooms
- Lounge/Dining Area
- Off Street Parking/Garage
- CHAIN FREE
- South Facing Garden

On the ground floor, the property boasts an open plan living and dining area, complemented by a fully fitted kitchen with ample base units and eye-level cupboards. Additional storage is provided by a large under-stair cupboard. The living area extends through patio doors to a bright conservatory, leading to a well-manicured, low-maintenance rear garden, which includes an outside tap and access to the garage.

The first floor features a spacious master bedroom and a second bedroom, both located at the rear and equipped with a range of fitted wardrobes and cupboards. The three-piece bathroom suite includes a shower with a tiled bath surround. The landing offers convenient loft access via a drop-down ladder.

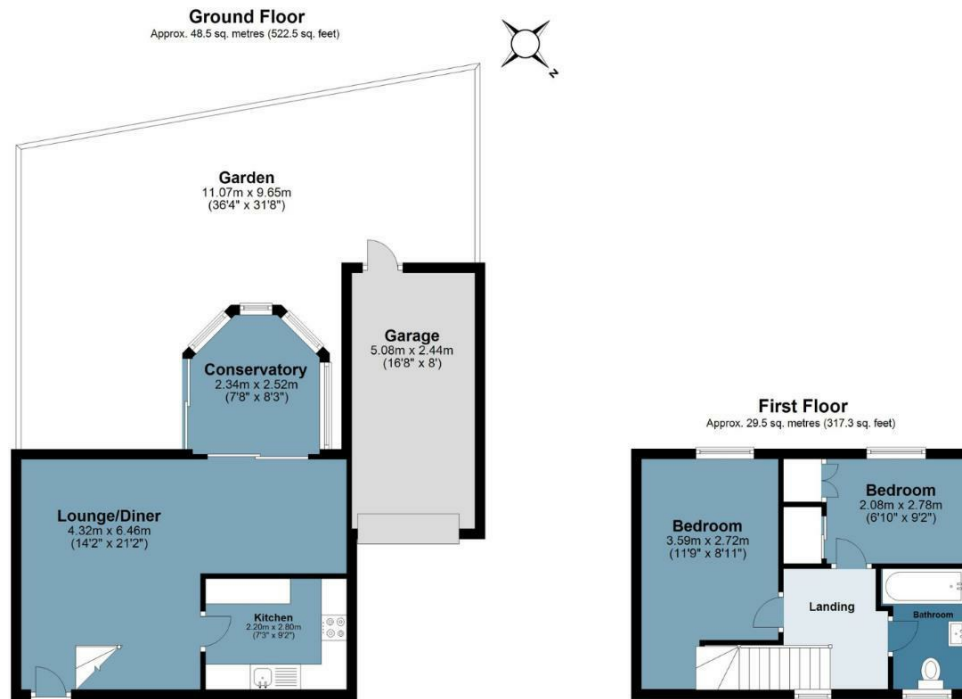
This delightful home is in excellent condition throughout and is perfectly situated for public transport links to Chelmsford, Brentwood, and Epping. It also provides easy access to mainline train stations and major roadways, including the A12, M25, and M11, making it an ideal location for commuters.





Kilnwood

Approx. Gross Internal Area 78 sq. metres (839.8 sq. feet)



Measurements are approximate and for illustration purposes only. While we do not doubt the accuracy and completeness, we advise you conduct a careful independent assessment of the property to determine monetary value
© @modephoto.uk www.modephoto.co.uk



☎ 01992 667666

🏠 4 Forest Drive, Theydon Bois, Essex, CM16 7EY

✉ theydon@butlerandstag.com

www.butlerandstag.uk

IMPORTANT NOTICE - These particulars have been prepared in good faith and they are not intended to constitute part of an offer or contract. We have not performed a structural survey on this property and the services, appliances and specific fittings have not been tested. All photographs, measurements, floor plans and distances referred to are given as a guide and should not be relied upon.