



Bower Vale, Epping, CM16

BUTLER & STAG





**Welcome to this charming two bedroom semi-detached house, offering a fantastic opportunity for those looking to put their personal stamp on a property.**



## Freehold

- Semi Detached Home
- Two Bedrooms
- Two Reception Rooms
- First Floor Bathroom
- CHAIN FREE
- North Facing Garden

Located in an enviable position just a short walk from Epping Underground Station, this home is perfect for commuters and those seeking a blend of convenience and tranquility.

As you enter, you will find a formal living room. The separate dining room provides an ideal space for family meals and entertaining guests. The kitchen, featuring doors that lead onto the garden, offers great potential for modernization and creating your dream cooking space.

The first floor houses two well-proportioned bedrooms, The family bathroom is conveniently located to serve both bedrooms.

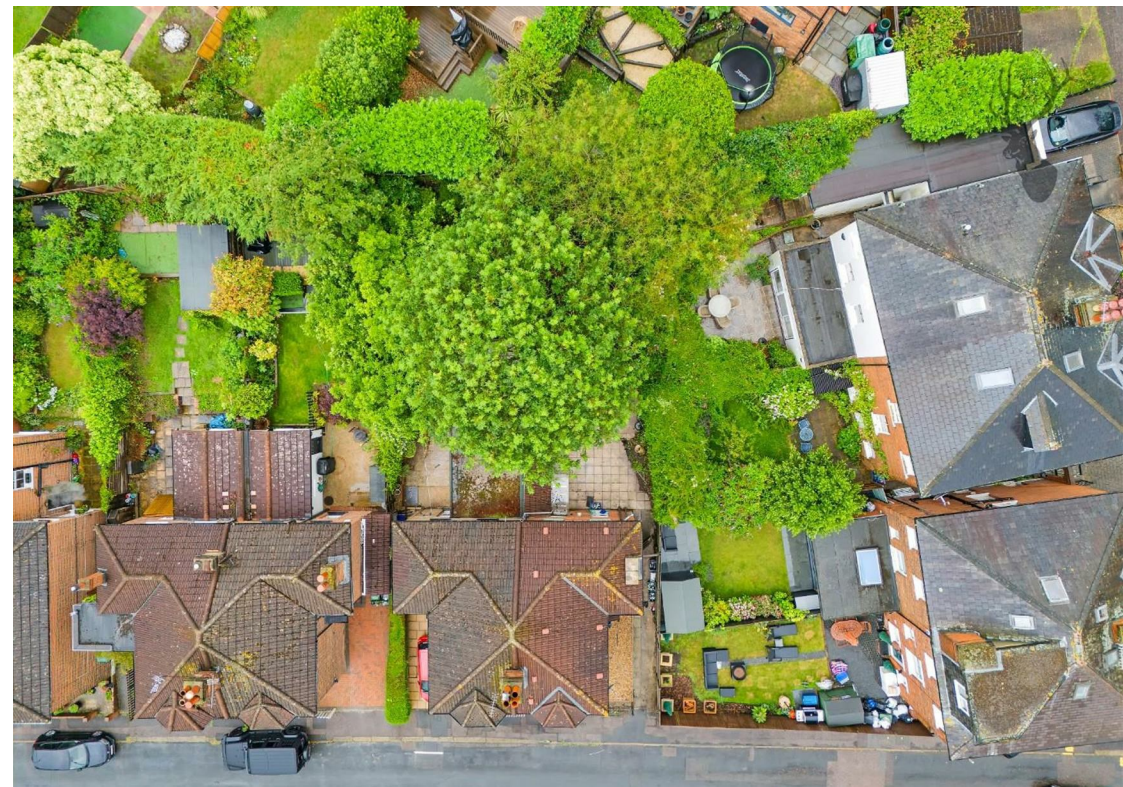
Externally, the property boasts a delightful southwest-facing garden designed for low maintenance.

Situated approximately five minutes' walk from Epping Underground Station (Central Line), the location is superb and extremely convenient. The town centre, just a mile away, provides a wide range of shopping and social amenities. For those needing to travel further, the M11 and M25 are easily accessible, with Stansted Airport just a 25-minute drive away.

This property is a fantastic opportunity to create a home tailored to your tastes and needs. Don't miss out on this potential-filled gem in a prime location.









# Bower Vale

Approx. Gross Internal Area 78.7 Sq M ( 847.3 Sq Ft )



Measurements are approximate and for illustration purposes only. While we do not doubt the accuracy and completeness, we advise you conduct a careful independent assessment of the property to determine monetary value.  
© @modephotouk www.modephoto.co.uk



📞 01992 667666

🏠 4 Forest Drive, Theydon Bois, Essex, CM16 7EY

✉️ theydon@butlerandstag.com

[www.butlerandstag.uk](http://www.butlerandstag.uk)

IMPORTANT NOTICE - These particulars have been prepared in good faith and they are not intended to constitute part of an offer or contract. We have not performed a structural survey on this property and the services, appliances and specific fittings have not been tested. All photographs, measurements, floor plans and distances referred to are given as a guide and should not be relied upon.