



Oak Hill Road, Romford, RM4

BUTLER & STAG





**Bishops Brow is a detached spacious three bedroom property set in a great position in the village of Stapleford Abbots.**



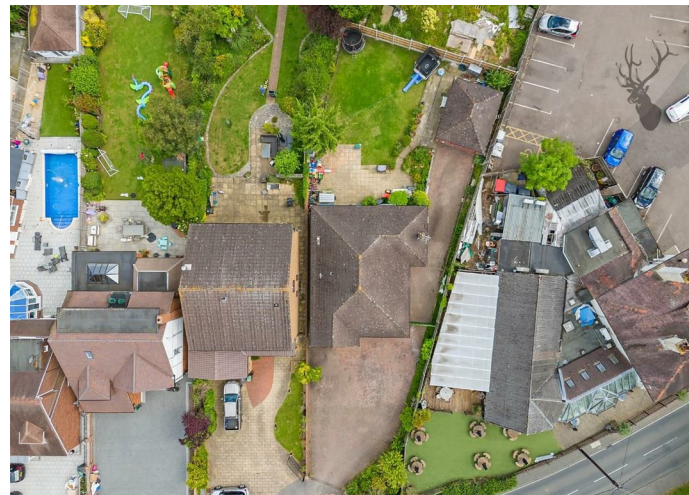
## Freehold

- Detached Bungalow
- Three Bedrooms
- Off Street Parking/Potential To Extend (stp)
- Detached Garage
- 114' North East Facing Garden
- Large Summer House Garden

Offering spacious living accommodation, the property comprises of an inviting entrance hall, a spacious bright and airy living room, a kitchen/breakfast area with doors leading onto the garden, three bedrooms and a family bathroom

Externally the property enjoys a north east facing garden as well as a patio which leads to the well maintained lawn.

Bishops Brow is situated on a sought after road in Stapleford Abbots on the outskirts of the popular village of Havering-Atte-Bower. The village shop is just a few minutes away, The Royal Oak public house is a 30 second walk away also. Theydon Bois village and Chigwell are a short drive for access to a Central Line Station. There is also good access to the A12 and the M25.







# Oak Hill Road

Approx. Gross Internal Area 150.2 sq. metres (1616.7 sq. feet)



Measurements are approximate and for illustration purposes only. While we do not doubt the accuracy and completeness, we advise you conduct a careful independent assessment of the property to determine monetary value  
© @modephotouk www.modephoto.co.uk



☎ 01992 667666

🏠 4 Forest Drive, Theydon Bois, Essex, CM16 7EY

✉ theydon@butlerandstag.com

[www.butlerandstag.uk](http://www.butlerandstag.uk)

IMPORTANT NOTICE - These particulars have been prepared in good faith and they are not intended to constitute part of an offer or contract. We have not performed a structural survey on this property and the services, appliances and specific fittings have not been tested. All photographs, measurements, floor plans and distances referred to are given as a guide and should not be relied upon.