



Baldocks Road, Essex, CM16

BUTLER & STAG



**Guide Price £1,275,000 -
£1,300,000.**

**This fabulous five-bedroom
semi-detached family home
is immaculately presented
and offers flexible living
accommodation coupled
with a superb garden and
first class location.**



Freehold

- Impeccable Semi-Detached Family Home
- Five Bedrooms/Three Bathrooms
- Stunning Condition Throughout
- Vast Open Plan Kitchen/Dining Area
- Play Room/Utility Room/Downstairs Shower Room
- Off Street Parking For Three Vehicles

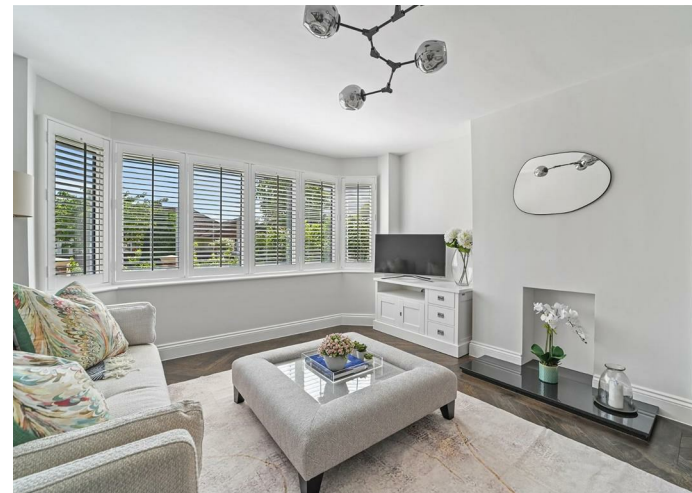
The property comprises of a large lounge, an open-plan modern kitchen/dining room with Miele and Bora appliances with views looking onto the garden, a spacious utility room, a shower room with WC, with an added bonus of a large study room/play room. The property boasts underfloor heating throughout the ground floor sitting underneath the bespoke hardwood flooring with a brass inlay which is another huge benefit of this property. The property has Cat 6 cabling throughout to cater for all internet access requirements including the outbuilding to the rear.

The tailored steel handrail and banister leads you up to the first floor, there are four bedrooms which are all light and airy and includes extensive built in wardrobes in the second and the third bedroom. There is a stylish family bathroom which holds a free standing bath, shower, wash basin and W/C. Bedroom five is located on the second floor and benefits from its own en-suite.

Externally, a brick pave forecourt provides off street parking for three vehicles. A special feature of the property is the South facing rear garden that is very well stocked with a variety of trees and shrubs, with a central lawn and an excellent size patio area with Sawn sandstone tiling. The current owners have also conveniently installed a EV podpoint charger at the front of the property. The property comes with a megaflo system with 2 year warranty alongside a 10 year boiler warranty.

Perfectly located for the village shops, pubs and restaurants and around a five minute walk to the Central Line Underground Station. Bordered by the historic Epping Forest, with the busy neighbouring towns of Epping and Loughton close by, Theydon Bois still retains the charm and character of a quintessential village with its strong community spirit, local activities, nearby golf, tennis cricket clubs plus of course, the centrepiece village green and pond.

Council-Epping Forest
Tax Band-E



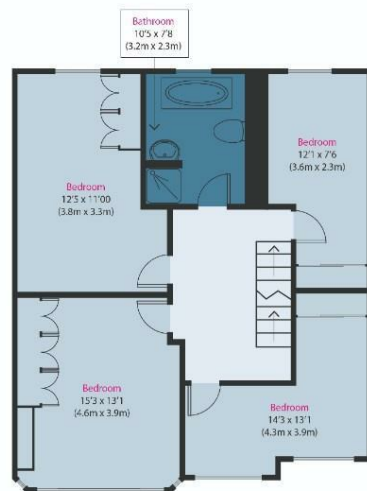


Approximate Gross Internal Area
2675 sq ft (249 sq m)

Disclaimer: Floorplan measurements are approximate and are for illustrative purposes only. While we do our best to ensure the floor plan accuracy and completeness, please note that you should conduct a careful, independent investigation of the property in respect of monetary valuation. www.butlerandstag.co.uk



Ground Floor



First Floor



Second Floor

IMPORTANT NOTICE - These particulars have been prepared in good faith and they are not intended to constitute part of an offer or contract. We have not performed a structural survey on this property and the services, appliances and specific fittings have not been tested. All photographs, measurements, floor plans and distances referred to are given as a guide and should not be relied upon.