



Ongar Road, Romford, RM4

BUTLER & STAG



Guide Price £1,100,000-£1,150,000

Discover a beautifully presented four-bedroom home set in the highly desirable village of Abridge. This exceptional property offers picturesque panoramic views and a spacious, sunny garden with a heated swimming pool.



Freehold

- Semi Detached Family Home
- Four Bedrooms/Two Bathrooms
- Spacious Kitchen/Dining Area
- Well Presented Throughout
- Swimming Pool
- Stunning Views

On the ground floor, the property boasts a vast modern lounge-dining-kitchen area measuring 40' 10" x 18' 5". This space features full-width, full-height bi-folding doors, offering breathtaking views. The area is enhanced by three stylish sky lanterns, decorative covings, tiled flooring with underfloor heating, and a large paved patio.

The bespoke kitchen is equipped with a large island and integrated appliances, including a Bosch five-burner hob with extractor, Miele microwave, Miele oven with grill, dishwasher, full-height fridge, and separate freezer.

At the front of the property, there is a large reception room with two windows, decorative covings, and hardwood flooring. This area also includes a guest cloakroom and a utility room.

The ground floor also features a well-proportioned double bedroom with a high vaulted ceiling, a front-facing window, a large wardrobe, and a modern fully tiled en-suite bathroom.

On the first floor, bedroom two is generously sized, with a storage cupboard, decorative covings, and a rear-facing window offering stunning panoramic views. Bedroom three is also spacious, with a front-facing window, decorative covings, and a large wardrobe. Bedroom four is currently used as a dressing room and has a front-facing window. The modern four-piece family bathroom is fully tiled and includes a double wet room style shower, a large bath, and a rear-facing window with amazing views.

Externally, the rear garden enjoys a sunny westerly aspect and measures approximately 300 feet in length. It features stunning panoramic views, a large paved

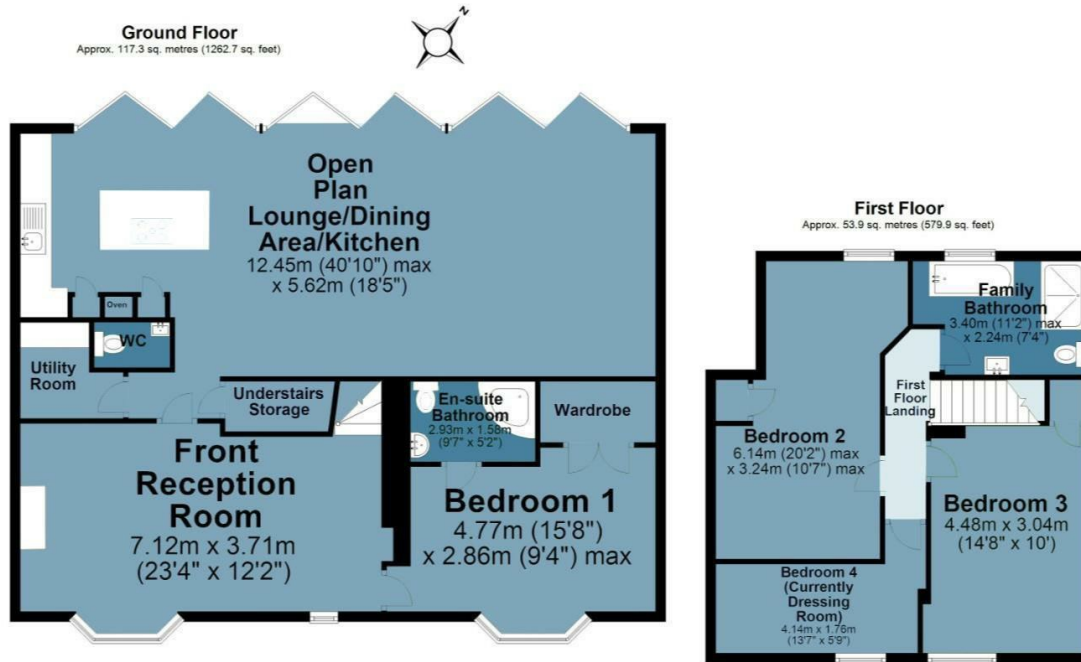




Ongar Road

Approx. Gross Internal Area 171.2 Sq M (1842.5 Sq Ft)

BUTLER & STAG



Measurements are approximate and for illustration purposes only. While we do not doubt the accuracy and completeness, we advise you conduct a careful independent assessment of the property to determine monetary value.
© @modephoto.uk www.modephoto.co.uk

BUTLER & STAG

☎ 01992 667666

🏠 4 Forest Drive, Theydon Bois, Essex, CM16 7EY

✉ theydon@butlerandstag.com

IMPORTANT NOTICE - These particulars have been prepared in good faith and they are not intended to constitute part of an offer or contract. We have not performed a structural survey on this property and the services, appliances and specific fittings have not been tested. All photographs, measurements, floor plans and distances referred to are given as a guide and should not be relied upon.

www.butlerandstag.uk