



Heath Drive, Epping, CM16

BUTLER & STAG



Step into the elegance of the 1930s with this stunning art deco semi-detached house nestled in the heart of Theydon Bois village.



Freehold

- Semi Detached 1930s Art Deco Family Home
- Two Spacious Reception Rooms
- Off-Street Parking
- Three Bedrooms
- Roof Terrace
- Close Proximity To Local Shops

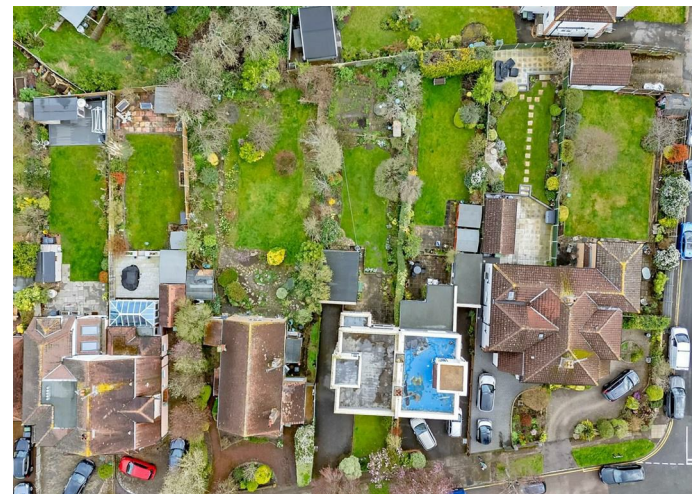
Elevated and cherished over the years, this residence presents an enticing opportunity for future development, subject to planning permission, thanks to its ample space and adaptable layout. Enter through the front door to discover a series of versatile living areas, including two generously proportioned reception rooms, a well-appointed kitchen, and a convenient downstairs WC, perfect for accommodating the needs of modern living.

On the first floor, where three spacious double bedrooms await, offering peaceful retreats for relaxation and rejuvenation. Completing this level is a family bathroom, providing comfort and convenience for residents and guests alike.

Ascend to the pinnacle of refinement and sophistication with a unique feature of this exquisite 1930s art deco house: a rooftop terrace offering unparalleled views of the charming village of Theydon Bois. Accessible from the first floor via the staircase, this rooftop oasis presents an enchanting vantage point to behold the beauty of the surrounding landscape.

Step outside into the serene embrace of the private, secluded garden, a tranquil oasis ideal for al fresco dining, entertaining, or simply unwinding amidst nature's embrace. Additional benefits include a detached garage and a driveway with ample space for multiple vehicles, ensuring both practicality and convenience.

Heath Drive epitomizes the quintessential art deco lifestyle, boasting an enviable location and timeless elegance. With boundless potential, this enchanting residence offers a rare opportunity to embrace the best of past and present. Beyond its confines lies a vibrant village community where historic charm meets contemporary vitality, with nearby amenities including golf, tennis, and cricket clubs, a verdant village green and pond, and proximity to the legendary Epping Forest. A harmonious blend of period charm and modern convenience, this home offers effortless connectivity to London and beyond, ensuring a life of unparalleled comfort and convenience.





Heath Drive

Approx. Gross Internal Area 152.3 sq. metres (1639.6 sq. feet)



Measurements are approximate and for illustration purposes only. While we do not doubt the accuracy and completeness, we advise you conduct a careful independent assessment of the property to determine monetary value
© @modephoto.uk www.modephoto.co.uk



☎ 01992 667666

🏠 4 Forest Drive, Theydon Bois, Essex, CM16 7EY

✉ theydon@butlerandstag.com

www.butlerandstag.uk

IMPORTANT NOTICE - These particulars have been prepared in good faith and they are not intended to constitute part of an offer or contract. We have not performed a structural survey on this property and the services, appliances and specific fittings have not been tested. All photographs, measurements, floor plans and distances referred to are given as a guide and should not be relied upon.