



Church Lane, Loughton, IG10

BUTLER & STAG



A two double bedroom apartment situated on the ground floor of this secure development, positioned in the heart of Loughton.



Share of Freehold

- Two Bedroom Flat
- Ground Floor
- Outside Space
- Separate Kitchen
- Communal Gardens
- Off-Street Parking

Internally, the property offers a spacious living room, a fitted kitchen, two double bedrooms, large storage cupboard and a family bathroom.

Externally, there is a outside garden which is communal but very private allocated to the property which is accessed from bedroom two. The development also has a stunning and well kept communal garden which is mainly laid to lawn with the boundaries governed by mature laurels and evergreens.

Church Lane is an extremely popular residential turning in an excellent position for those who enjoy the forest and the outdoor activities that come with it, yet it is still situated close to the high street with many shops, bars and restaurants. Loughton has excellent transport links into London with the tube station within easy reach and good road connections. There are several well regarded state and private schools nearby and a variety of leisure facilities including golf courses and sports clubs.

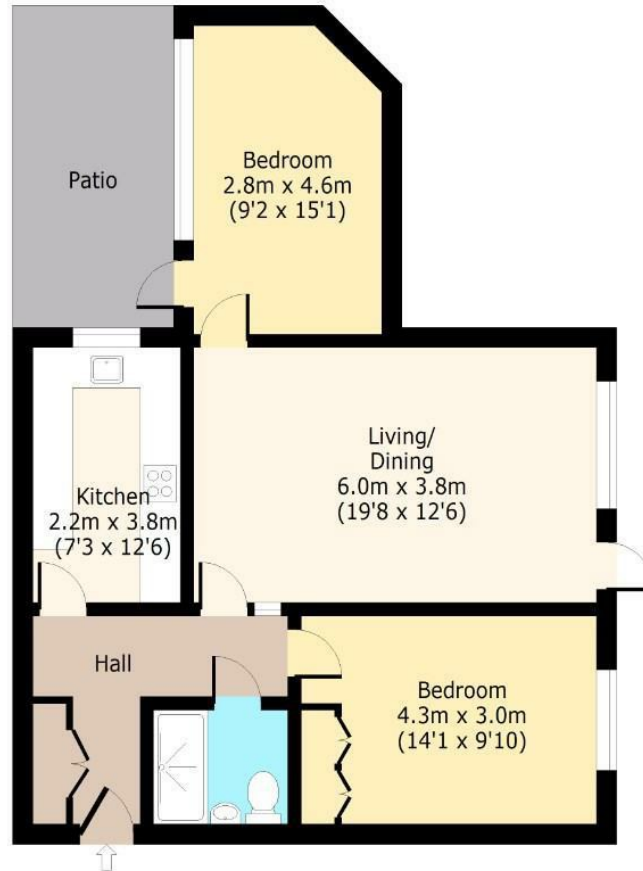




Ashmeads

Ground Floor

Approx. 73 Sq. meters (786 Sq. feet)



Total area: approx. 73 Sq. meters (786 Sq. feet)
For illustration purposes only - not to scale
www.lpaplus.com

BUTLER & STAG

☎ 01992 667666

🏠 4 Forest Drive, Theydon Bois, Essex, CM16 7EY

✉ theydon@butlerandstag.com

www.butlerandstag.uk

IMPORTANT NOTICE - These particulars have been prepared in good faith and they are not intended to constitute part of an offer or contract. We have not performed a structural survey on this property and the services, appliances and specific fittings have not been tested. All photographs, measurements, floor plans and distances referred to are given as a guide and should not be relied upon.