



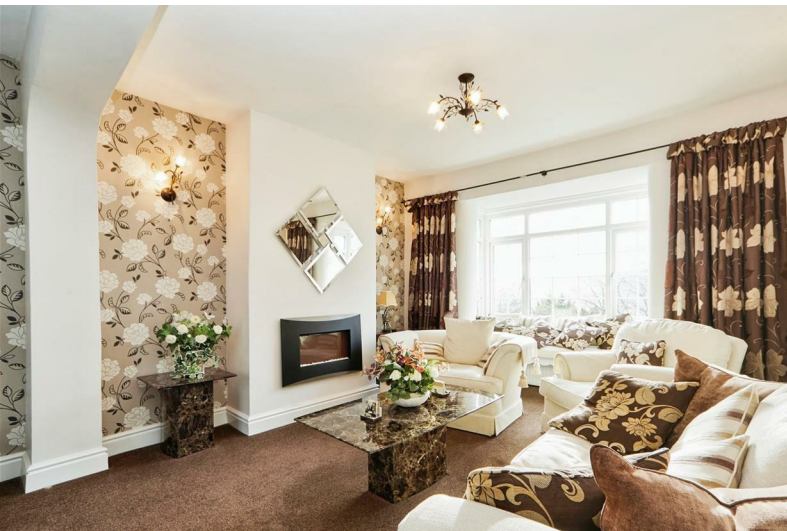
# Davies Properties



## The Haven St. Marys Road

Keighley, BD20 5PA

Offers Over £340,000





# The Haven St. Marys Road

Keighley, BD20 5PA

Offers Over £340,000



We are thrilled to offer this exceptional and substantial family residence, steeped in charm and character, nestled in the highly desirable village of Riddlesden. Having been cherished by the current owners for over four decades, this versatile home presents an unparalleled opportunity for large families seeking ample living space.

Spanning three generous levels, the property boasts gas central heating and uPVC double glazing throughout. The accommodation is thoughtfully designed to maximise the breathtaking long-distance countryside vistas from the majority of the front-facing rooms, providing a serene and picturesque backdrop to everyday living.

Externally, the property is complemented by a substantial driveway (with shared access rights for the neighbouring property), offering ample off-road parking, and a mature garden adorned with established trees and shrubs, creating a private oasis for relaxation and outdoor activities.

Riddlesden itself is renowned for its family-friendly environment, excellent schools, and beautiful canal views, making it a sought-after location within Keighley. The village's proximity to the historic East Riddlesden Hall, a 17th-century manor house now owned by the National Trust, adds a touch of heritage and culture to the area. Additionally, the Leeds and Liverpool Canal runs through Riddlesden, providing scenic walking routes and enhancing the village's picturesque appeal.

We highly recommend arranging a viewing to fully appreciate the unique qualities and vast potential this distinguished family home offers.

## LOWER GROUND FLOOR

### Lounge

15'7" x 12'4" (4.75m x 3.76m)

Featuring a stylish fitted oak bar, perfect for entertaining guests, this space also boasts a uPVC double-glazed patio door to the front, allowing for plenty of natural light. A central heating radiator ensures warmth and comfort, while charming feature stonework adds character. Additionally, there is convenient access to an under-stairs storage area housing the utility meters.

### Dining Room

12'0" x 11'1" (3.66m x 3.38m)

With a uPVC double-glazed entrance door, this inviting space features elegant wood-panelled walls and ceiling, creating a warm and characterful ambiance. A large uPVC double-glazed window to the front allows natural light to flood in, while a central heating radiator ensures year-round comfort.

### Kitchen

12'0" x 11'5" (3.66m x 3.48m)

This thoughtfully designed fitted kitchen features matching wall and base units complemented by sleek granite work surfaces and stylish tiled splash-backs. It comes fully equipped with a double integrated gas oven, a gas hob with a recirculatory hood, and a one-and-a-half bowl stainless steel sink with a swan neck mixer tap. A uPVC double-glazed window to

the front elevation fills the space with natural light, while Amtico flooring, recessed ceiling spotlights, and an electric floor fan heater add both practicality and modern elegance.

### Utility Room

11'5" x 5'5" (3.48m x 1.65m)

This charming country-style utility room is fitted with elegant wall and base units, complemented by tiled work surfaces for a rustic yet practical finish. Designed for convenience, it offers plumbing for a washing machine and dishwasher, along with dedicated space for a tumble dryer and under-counter fridge and freezer. The tiled flooring enhances both durability and style, making it a perfect blend of character and functionality. The following appliances are included within the sale - washing machine, tumble dryer, dishwasher, fridge and freezer.

## GROUND FLOOR

### Entrance Hall

This area includes a uPVC double-glazed door, a central heating radiator, and stairs leading to the first floor.

### Living Room

17'11" x 12'9" (5.46m x 3.89m)

This bright and inviting room benefits from uPVC double-glazed windows to both the front and rear elevations, allowing an abundance of natural light to fill the space. Two central heating radiators ensure warmth and comfort, while a charming window seat provides the perfect

spot to take in the picturesque countryside views. Completing the cosy ambiance is a stylish wall-mounted electric fire, adding both warmth and a contemporary touch.

### Bedroom One

12'0" x 11'11" (3.66m x 3.63m)

A uPVC double-glazed window to the front elevation offers stunning countryside views, filling the room with natural light. A central heating radiator ensures a warm and comfortable atmosphere, making this space both inviting and practical.

### Bedroom Two

12'0" x 11'11" (3.66m x 3.63m)

This bright and airy room features a uPVC double-glazed window to the front, offering breathtaking long-distance views, along with an additional window to the side elevation for extra natural light. A central heating radiator provides warmth and comfort, while a useful storage cupboard adds practicality and convenience.

### Bathroom

7'2" x 6'2" (2.18m x 1.88m)

This stylish bathroom features a three-piece suite, including a corner bath, a WC, and a pedestal hand wash basin. The walls are fully tiled for a sleek and easy-to-maintain finish, while a uPVC double-glazed window to the side elevation allows natural light to brighten the space. A heated towel rail adds a touch of comfort and warmth.

## FIRST FLOOR

### Bedroom Three

12'10" x 11'10" (3.91m x 3.61m)

This well-appointed room features a uPVC double-glazed window to the front elevation, offering stunning long-distance views. Built-in wardrobes and a matching dressing table provide ample storage and functionality, while a central heating radiator ensures warmth and comfort. A loft hatch offers additional storage access, adding to the room's practicality.

### Bedroom Four

11'9" x 9'5" (3.58m x 2.87m)

This spacious room boasts a uPVC double-glazed window to the front elevation, framing picturesque long-distance countryside views. Fitted wardrobes offer generous storage space, while spotlights to the ceiling create a modern, well-lit atmosphere. A central heating radiator ensures a comfortable environment throughout the year.

### Bedroom Five

9'9" x 7'4" (2.97m x 2.24m)

This room features a uPVC double-glazed window to the rear elevation, allowing plenty of natural light to fill the space. A central heating radiator ensures comfort, while built-in storage shelves provide convenient and efficient storage solutions.

### Bathroom

7'10" x 5'9" (2.39m x 1.75m)

This practical bathroom is equipped with a four-piece suite, including a panelled bath with soothing jacuzzi water jets, an overhead shower, a pedestal hand wash basin, WC, and bidet. Tiled walls add a sleek and contemporary finish, while a uPVC double-glazed window to the rear elevation allows natural light to brighten the space. A central heating radiator ensures comfort throughout.

## EXTERIOR

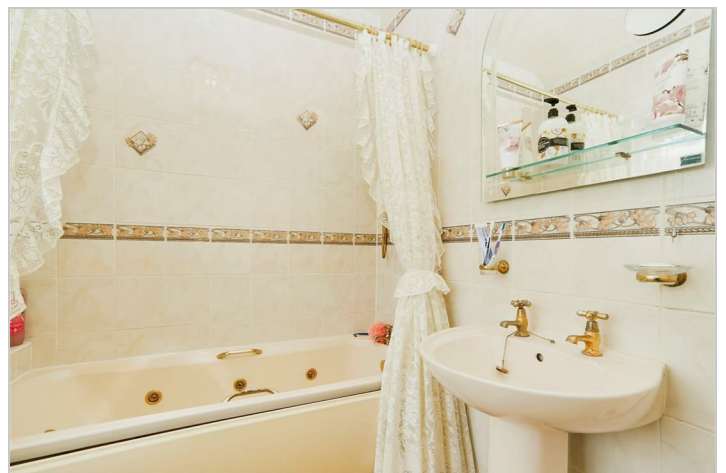
At the rear of the property, two outbuildings provide valuable storage space, with the boiler discreetly housed in one of them. To the front, a spacious block-paved driveway (with shared access rights for the neighbouring property), offers generous off-road parking for multiple vehicles. The low-maintenance garden is adorned with mature trees and shrubs, enhancing the property's overall charm and appeal.

## OTHER INFORMATION

~ Tenure: Freehold

~ Council Tax Band 'C'

~ Parking: Ample off-road parking on the driveway and car-port



Road Map



Hybrid Map



Terrain Map



Floor Plan



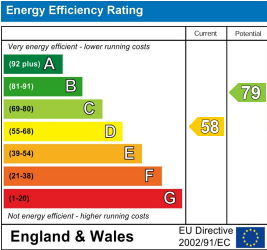
Total floor area 170.5 m<sup>2</sup> (1,835 sq.ft.) approx

This floor plan is for illustrative purposes only. It is not drawn to scale. Any measurements, floor areas (including any total floor area), openings and orientation are approximate. No details are guaranteed, they cannot be relied upon for any purpose and they do not form part of any agreement. No liability is taken for any error, omission or misstatement. A party must rely upon its own inspection(s).  
Powered by [www.focalagent.com](http://www.focalagent.com)

Viewing

Please contact our Davies Properties Sales Office on 01535 872018 if you wish to arrange a viewing appointment for this property or require further information.

Energy Efficiency Graph



These particulars, whilst believed to be accurate are set out as a general outline only for guidance and do not constitute any part of an offer or contract. Intending purchasers should not rely on them as statements of representation of fact, but must satisfy themselves by inspection or otherwise as to their accuracy. No person in this firms employment has the authority to make or give any representation or warranty in respect of the property.