



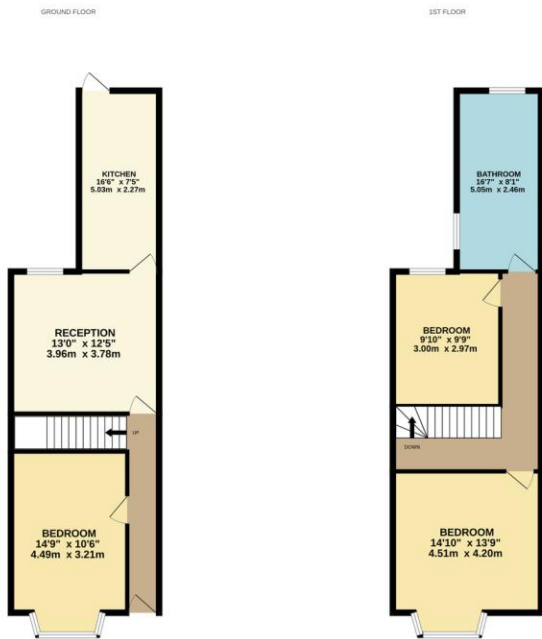
property investment and management specialists

4 WINCHESTER AVENUE, LEICESTER, LE3 1AU
FIXED PRICE £140,000









%epcGraph_c_1_304%

Whilst every attempt has been made to ensure the accuracy of the floorplans contained herein, measurements of doors, windows, rooms and any other items are approximate and no responsibility is taken for any error, omission or mis-statement. This plan is for illustrative purposes only and should be used as such by any prospective purchaser. The accuracy, completeness and legal status of these plans will be verified and guaranteed by the relevant authority of authority (see page 10).

Made with Metragen CS2024