



**Premier  
Properties**  
Perth



## 41 Duncansby Way, Perth, PH1 5XE

### £700 Per Calendar Month

 2  1  1  C

Accommodation: Entrance hall, lounge, kitchen, two bedrooms and bathroom.

Duncansby Way is in the catchment area for St John's Academy, where there are excellent sporting facilities, Balhousie PS and Perth Grammar. It is also within walking distance of the Highlands and Islands University on Crieff Road, North Inch Park and St Catherine's Retail Park. There is a good bus service to the city centre and easy access to local employers at Inveralmond Industrial Estate.

Council Tax Band: C

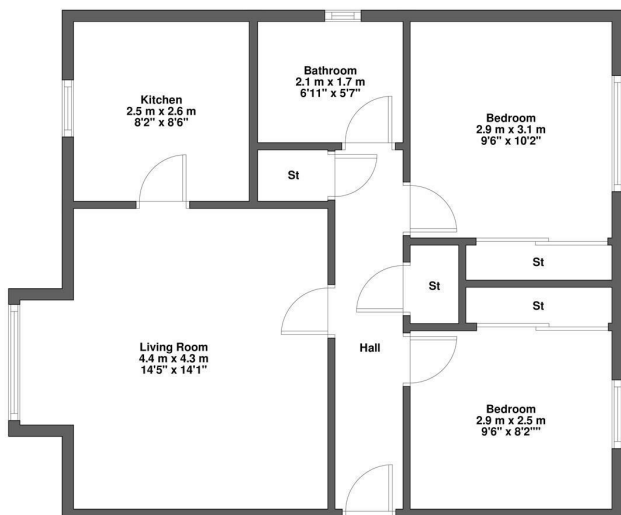
EPC: C

Landlord Registration Number: 1438188/340/25062  
LARN1907010

Available July 2025

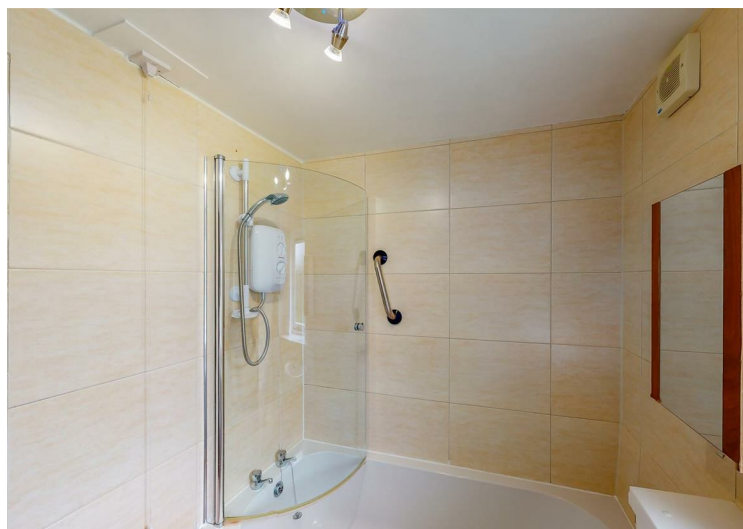
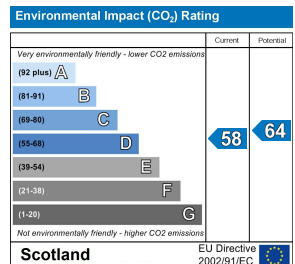
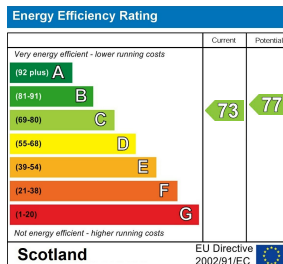






41 Duncansby Way, Perth, PH1 5XE

Plan not to scale.  
For illustrative purposes only.



These particulars, whilst believed to be accurate are set out as a general outline only for guidance and do not constitute any part of an offer or contract. Intending purchasers should not rely on them as statements of representation of fact, but must satisfy themselves by inspection or otherwise as to their accuracy. No person in this firm's employment has the authority to make or give any representation or warranty in respect of the property.

45 Kings Street, Perth, PH2 8JB

T. 01738 442255 | E. [lettings@premierpropertiesperth.co.uk](mailto:lettings@premierpropertiesperth.co.uk)

[www.premierpropertiesperth.co.uk](http://www.premierpropertiesperth.co.uk)