



**Premier  
Properties**  
Perth



## 16/2 Rose Terrace, Perth, PH1 5HA

£1,600 Per Month

 4  2  nu  D

Accommodation is formed over two level and consists; SECOND FLOOR - entrance hall, lounge, dining room, kitchen/breakfast room, two bedrooms and bathroom with WC. ATTIC FLOOR - landing, bedroom 3 with en suite shower with WC and bathroom 4.

This spacious property benefits from gas central heating, secure door entry system and on street parking.

Rose Terrace is located in a highly sought after location within walking distance of Perth City Centre and its many amenities include the theatre, concert hall, cafe quarter and excellent shopping facilities. For those who prefer the quieter lifestyle the beautiful North Inch Parklands are right on the doorstep.

Council Tax Band: D

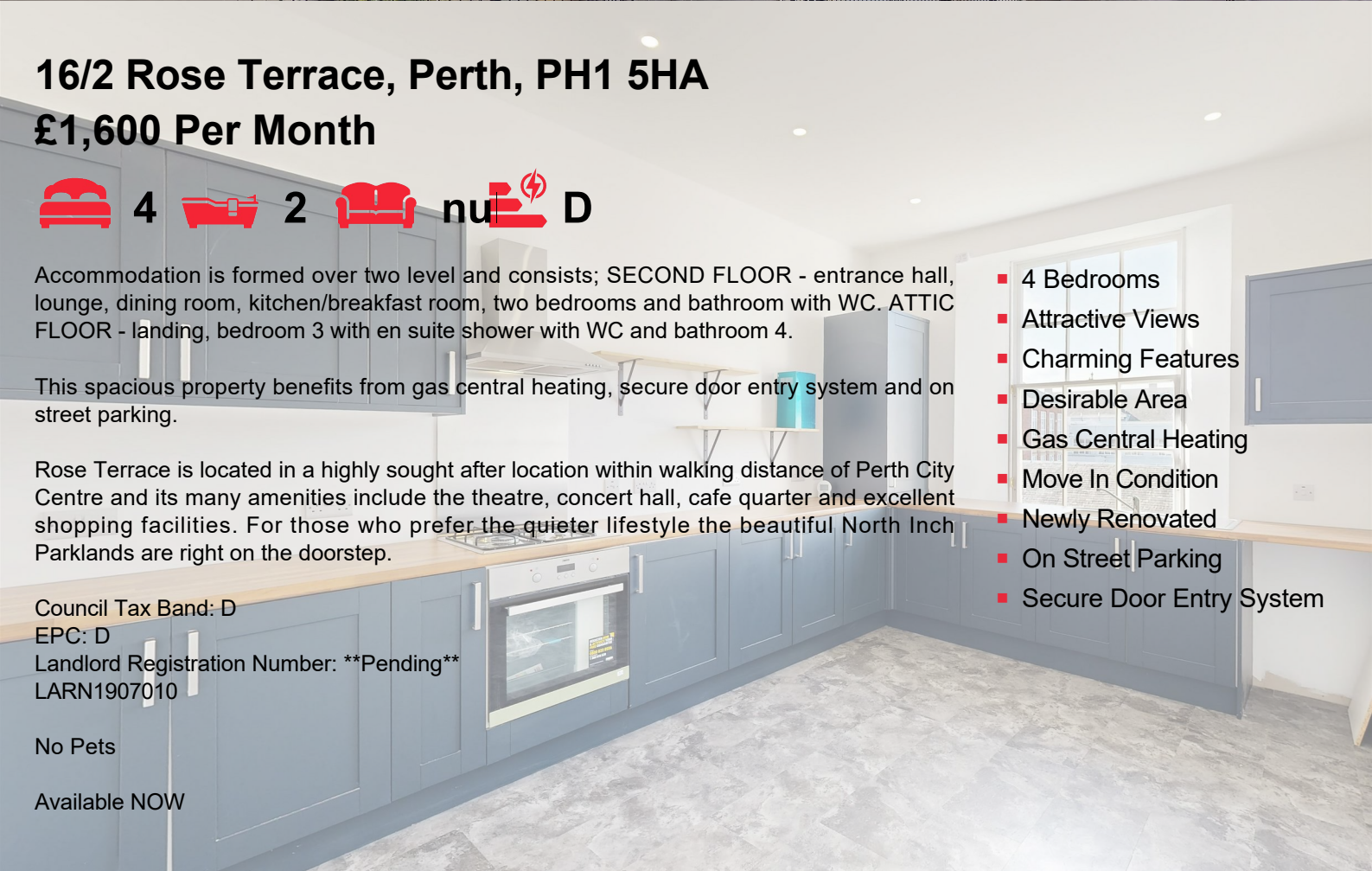
EPC: D

Landlord Registration Number: **\*\*Pending\*\***  
LARN1907010

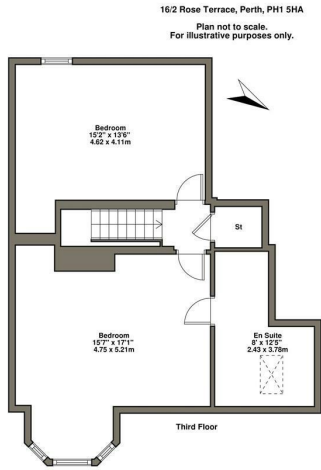
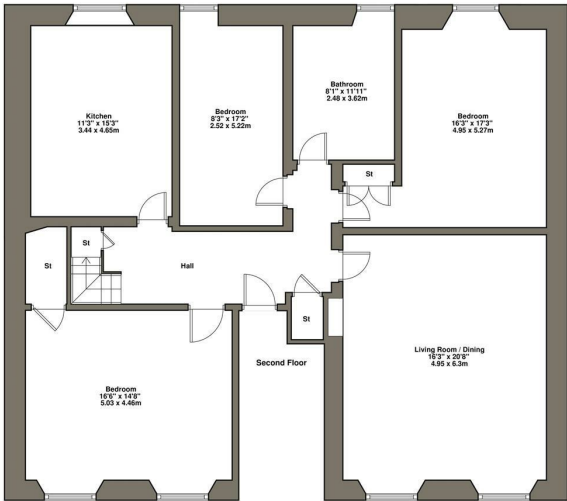
No Pets

Available NOW

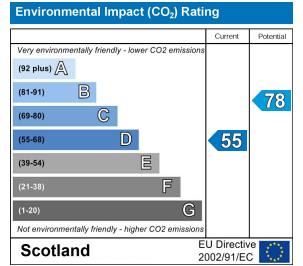
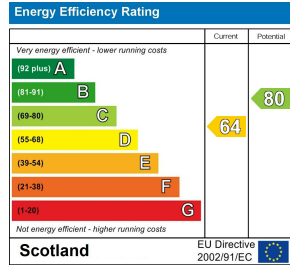
- 4 Bedrooms
- Attractive Views
- Charming Features
- Desirable Area
- Gas Central Heating
- Move In Condition
- Newly Renovated
- On Street Parking
- Secure Door Entry System







16/2 Rose Terrace, Perth, PH1 5HA  
 Plan not to scale.  
 For illustrative purposes only.



These particulars, whilst believed to be accurate are set out as a general outline only for guidance and do not constitute any part of an offer or contract. Intending purchasers should not rely on them as statements of representation of fact, but must satisfy themselves by inspection or otherwise as to their accuracy. No person in this firm's employment has the authority to make or give any representation or warranty in respect of the property.