



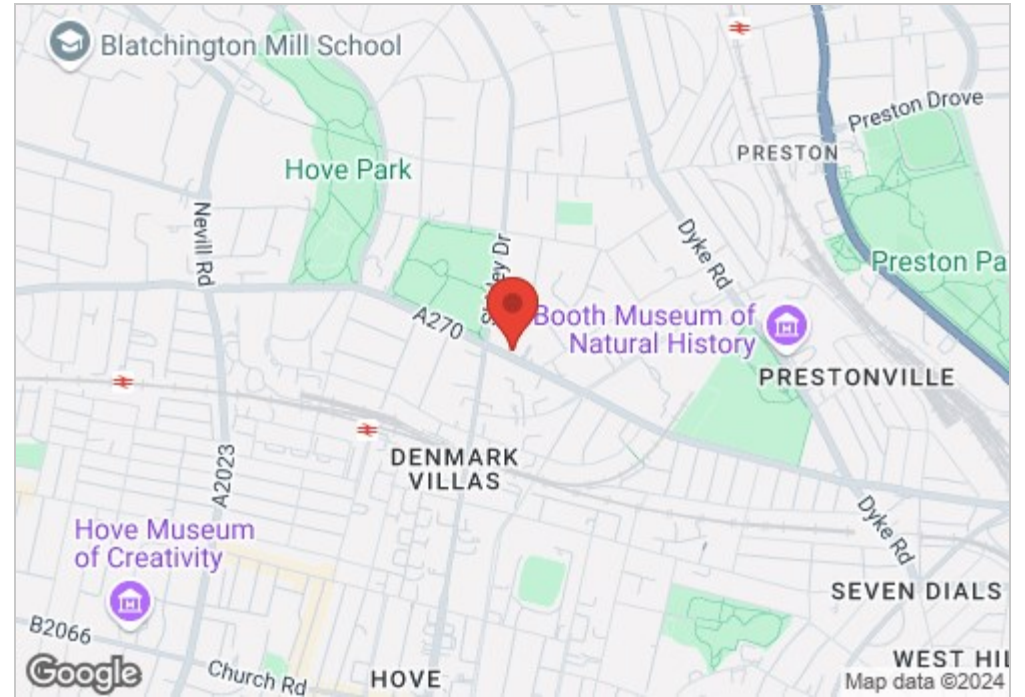
25 Old Shoreham Road
Hove, BN3 6NR

Guide price £1,150,000



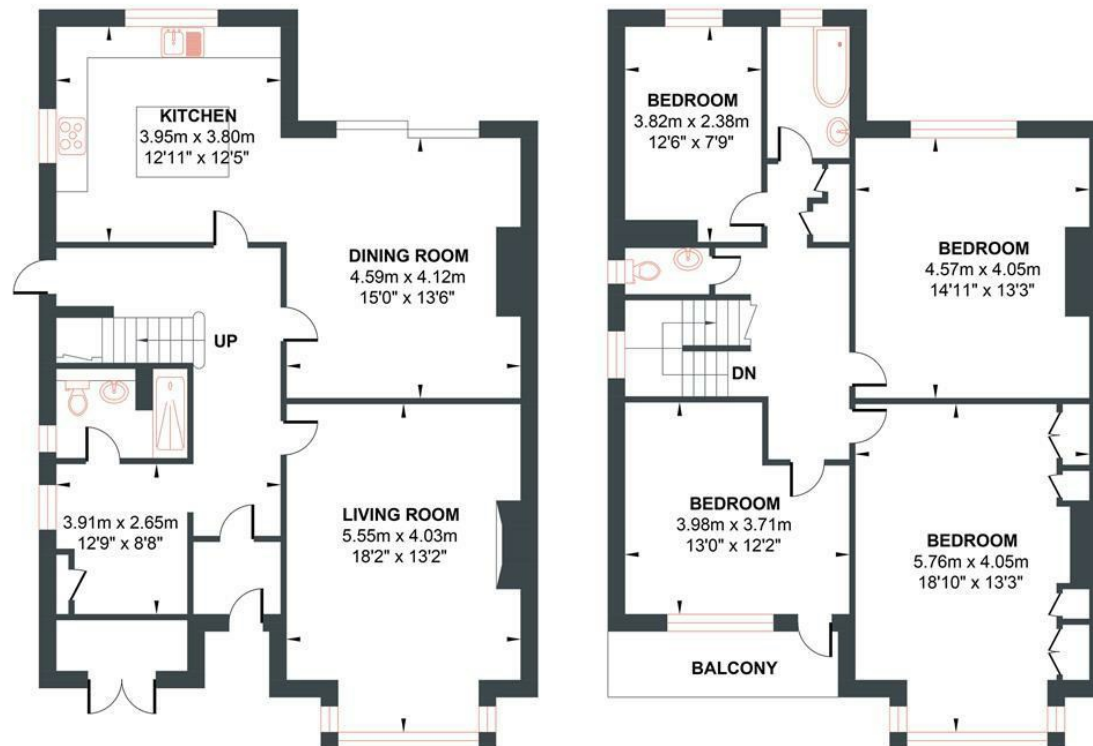
- Substantial 4 bedroom family home
- Extensively and tastefully modernised
- Beautifully presented
- Prime central location close Hove mainline station and City Centre
- Considerable character
- Exceptionally light and spacious
- Lovely large garden
- Must be viewed

Energy Efficiency Rating		
	Current	Potential
Very energy efficient - lower running costs		
(92 plus) A		
(81-91) B		
(69-80) C		
(55-68) D		
(39-54) E		
(21-38) F		
(1-20) G		
Not energy efficient - higher running costs		
	72	81
England & Wales	EU Directive 2002/91/EC	



OLD SHOREHAM ROAD

Approximate Gross Internal Area = 169.15 sq m / 1820.71 sq ft
Illustration for identification purposes only, measurements are approximate, not to scale.



GROUND FLOOR

Approximate Floor Area
922.79 sq ft
(85.73 sq m)

FIRST FLOOR

Approximate Floor Area
897.92 sq ft
(83.42 sq m)

