

11b Tongdean Road

Hove, BN3 6QB

Guide price £1,800,000

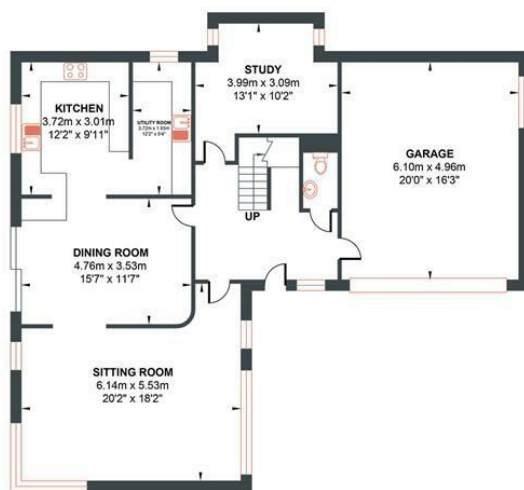


- Detached
- 3 Reception Rooms
- 3450 sq ft
- Secluded and Private
- 4 Bathrooms
- 6 Bedrooms
- Private Parking for 5 Plus Cars
- Garage
- Gated
- Private Garden

Energy Efficiency Rating		
	Current	Potential
Very energy efficient - lower running costs		
(92 plus) A		
(81-91) B		
(69-80) C		
(55-68) D		
(39-54) E		
(21-38) F		
(1-20) G		
Not energy efficient - higher running costs		
	82	88
England & Wales	EU Directive 2002/91/EC	

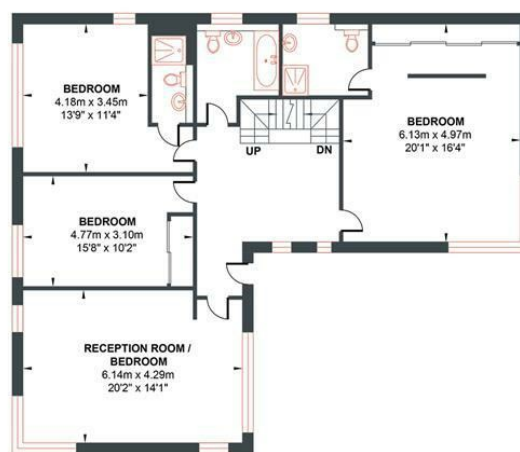
TONGDEAN ROAD

Approximate Gross Internal Area = 320.50 sq m / 3449.83 sq ft
 Illustration for identification purposes only, measurements are approximate, not to scale.



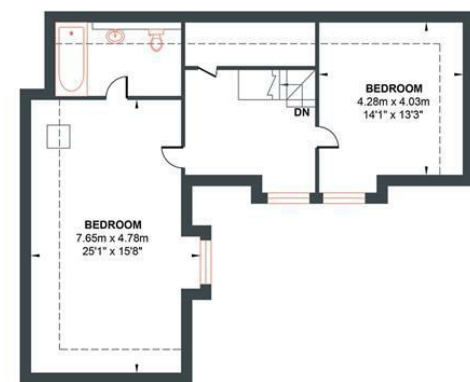
GROUND FLOOR

Approximate Floor Area
 1347.21 sq ft
 (125.16 sq m)



FIRST FLOOR

Approximate Floor Area
 1285.42 sq ft
 (119.42 sq m)



SECOND FLOOR

Approximate Floor Area
 817.19 sq ft
 (75.92 sq m)

