



1 St. Catherines Terrace

Hove, BN3 2RR

Guide price £550,000

Stunning Seafront Mansion Flat with Panoramic Sea Views!

Occupying the top two floors of an elegant period building on Hove seafront, this beautifully renovated two-bedroom mansion flat offers over 1,128 sq ft of stylish, light-filled living space with spectacular sea views. Positioned at the start of Hove Lawns and moments from the beach, the property also sits within easy walking distance of Church Road’s thriving mix of independent cafés, restaurants, and shops.

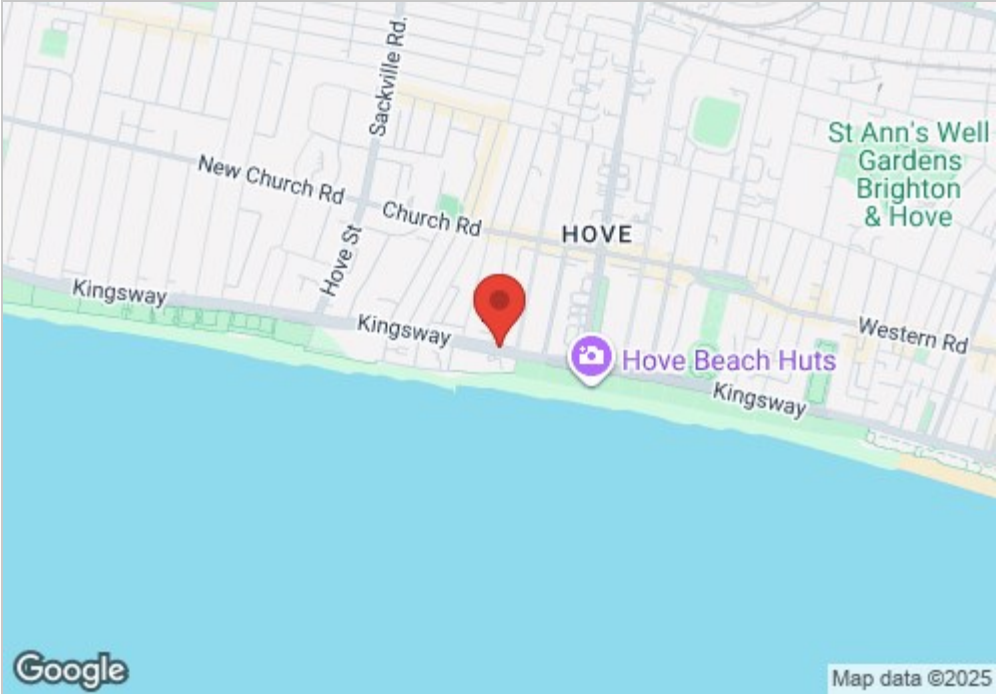
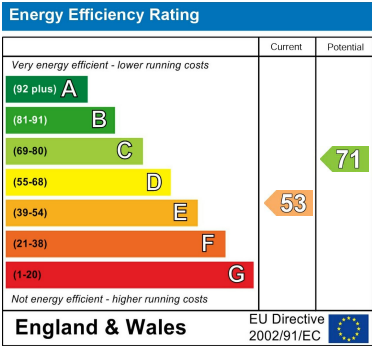
The accommodation is arranged across split levels, creating an impressive sense of space and flow. The heart of the home is a magnificent 21ft x 20ft south-facing reception room, complete with original wood flooring, intricate period cornicing, and a large bay window that perfectly frames the coastal outlook. With ample space for both lounging and formal dining, this is a room designed for entertaining.

The contemporary kitchen/breakfast room has been thoughtfully designed with integrated appliances, generous worktop space, and plentiful storage. A large sash window and glazed door flood the space with natural light and open onto a charming fire escape balcony, perfect for a morning coffee or evening drink with a sea breeze.

Both bedrooms are well-proportioned, with the principal bedroom enjoying a stunning southerly aspect and direct sea views, as well as fitted wardrobes. The recently updated bathroom features a modern, high-quality suite.

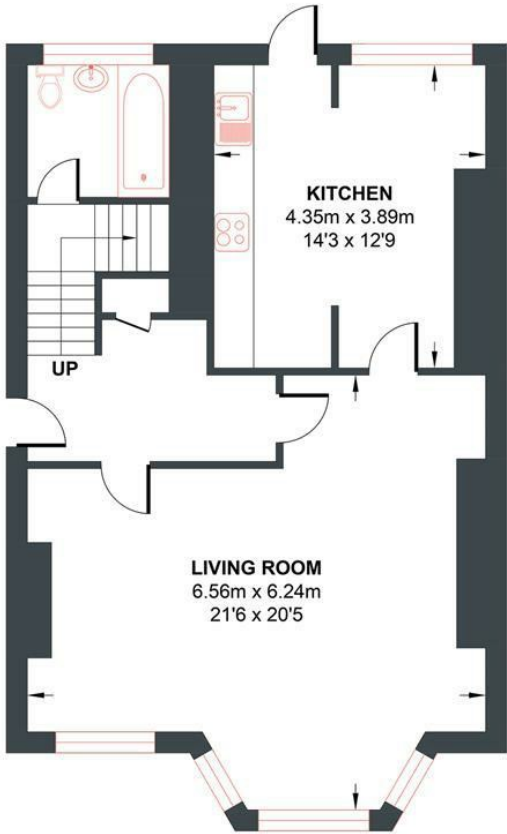
Offered with no onward chain and a share of the freehold, this turnkey home combines period character with modern convenience in one of Hove’s most sought-after seafront locations.

- Stunning Seafront Mansion Flat
 - Occupying Two Floors
 - 21ft x 20ft South-Facing Reception Room
 - Contemporary Kitchen/Breakfast Room
 - Offered with No Onward Chain
- Panoramic Sea Views
 - Two Bedroom Flat
 - Original Wood Flooring
 - Charming Fire Escape Balcony
 - Share of the Freehold



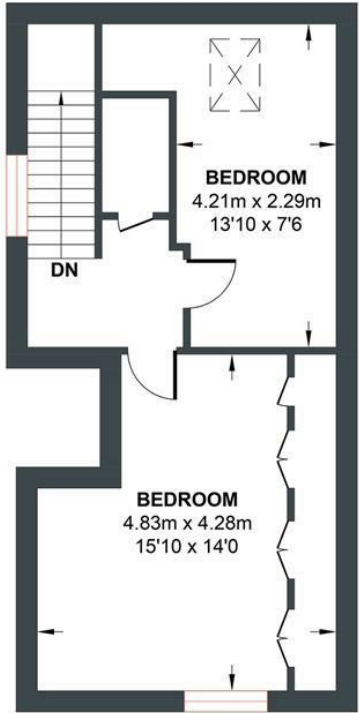
ST CATHERINE’S TERRACE

Approx. Gross Internal Floor Area= 104.82 sq m / 1128.26 sq ft
Illustration for identification purposes only, measurements are approximate, not to scale.



GROUND FLOOR

Approximate Floor Area
706.43 sq ft
(65.63 sq m)



FIRST FLOOR

Approximate Floor Area
421.83 sq ft
(39.19 sq m)

