





# Shirley Drive

Hove, BN3 6UL

£2,900 Per month

A fantastic opportunity to rent this five bedroom detached family home on Shirley drive. The house is in a prime location of Hove, close to Hove park and is available now. On the ground floor are two great sized reception rooms, separate kitchen and conservatory as well as downstairs loo. Upstairs on the first floor are five bedrooms, the master and second bedroom both enjoy sea views. The family bathroom has a bath and wash basin with a separate W/C next door. The back garden is large and can be accessed via the conservatory, as well as the garage and the kitchen.

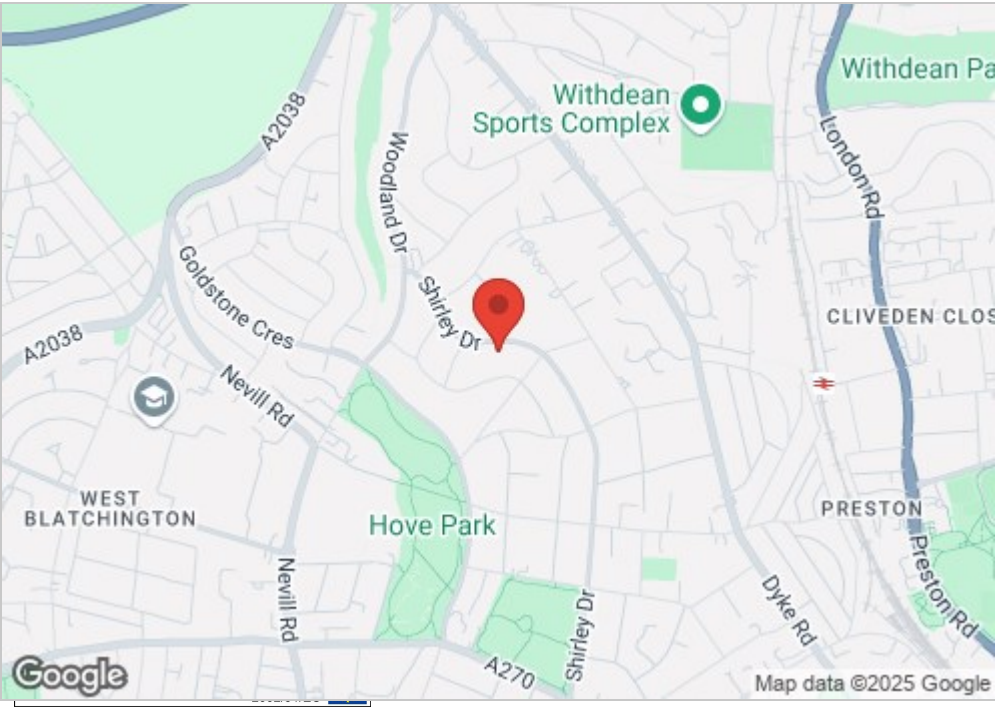
Shirley Drive is located in the sought after Hove Park area of Hove, with numerous good schools, whilst providing easy access to the A27/A23. There are also bus routes located close by providing access to Brighton City centre and the centre of Hove.

Garden annexe included, available now, long term.



- Detached family home
- 5 bedrooms
- 2 Reception rooms
- Garage is not included
- Large Garden with annexe included
- Popular Hove park location
- Unfurnished
- Company let accepted
- Gardener included

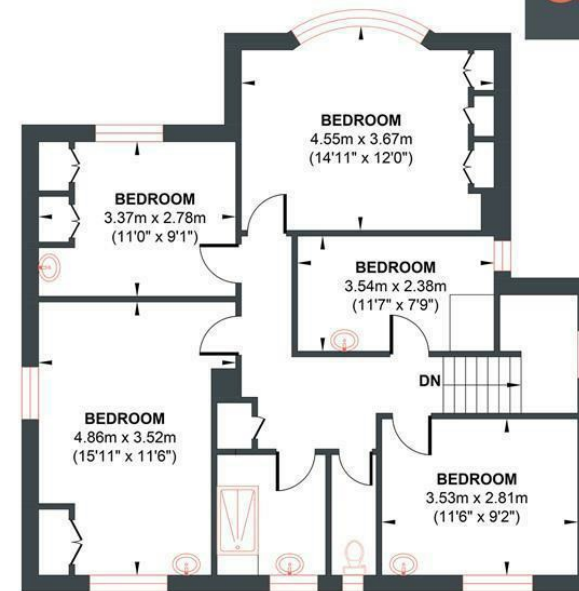
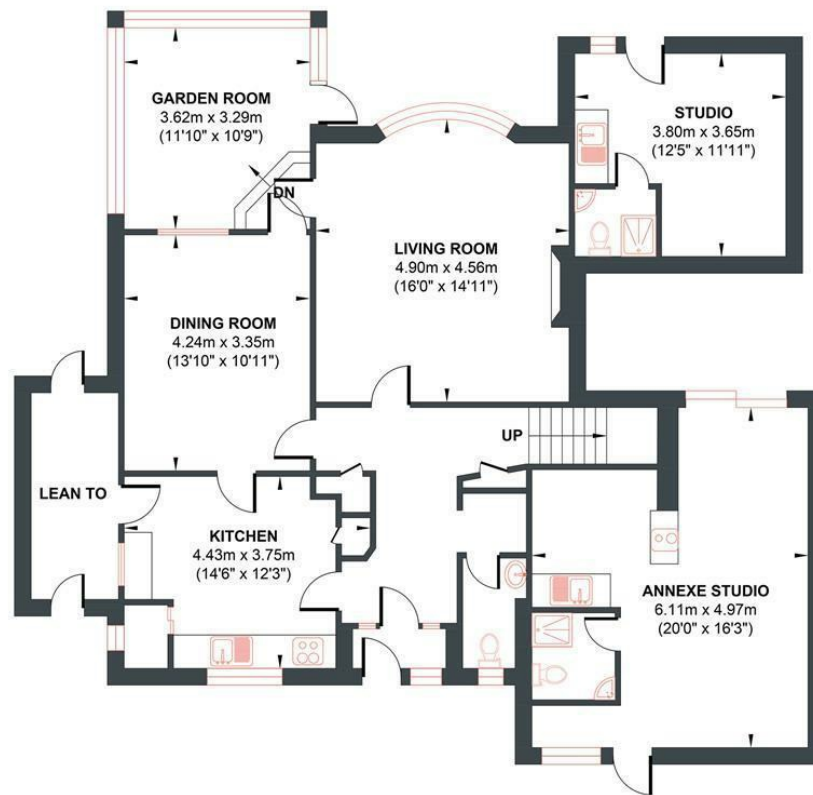
Energy Efficiency Rating		
	Current	Potential
Very energy efficient - lower running costs		
(92 plus) A		
(81-91) B		
(69-80) C		
(55-68) D		
(39-54) E		
(21-38) F		
(1-20) G		
Not energy efficient - higher running costs		
England & Wales		
EU Directive 2002/91/EC		



## SHIRLEY DRIVE

Approx. Gross Internal Floor Area = 209.57 sq m / 2255.79 sq ft

Illustration for identification purposes only, measurements are approximate, not to scale.



Foster & Co and their clients give notice that:

These sales particulars do not constitute any part of an offer of contract and are for guidance for prospective purchases only and should be not relied upon as a statement of fact.

We are not to be held responsible for material information that has not been given to us by our client at the time of marketing.

All measurements are approximate





