





# Kings Road

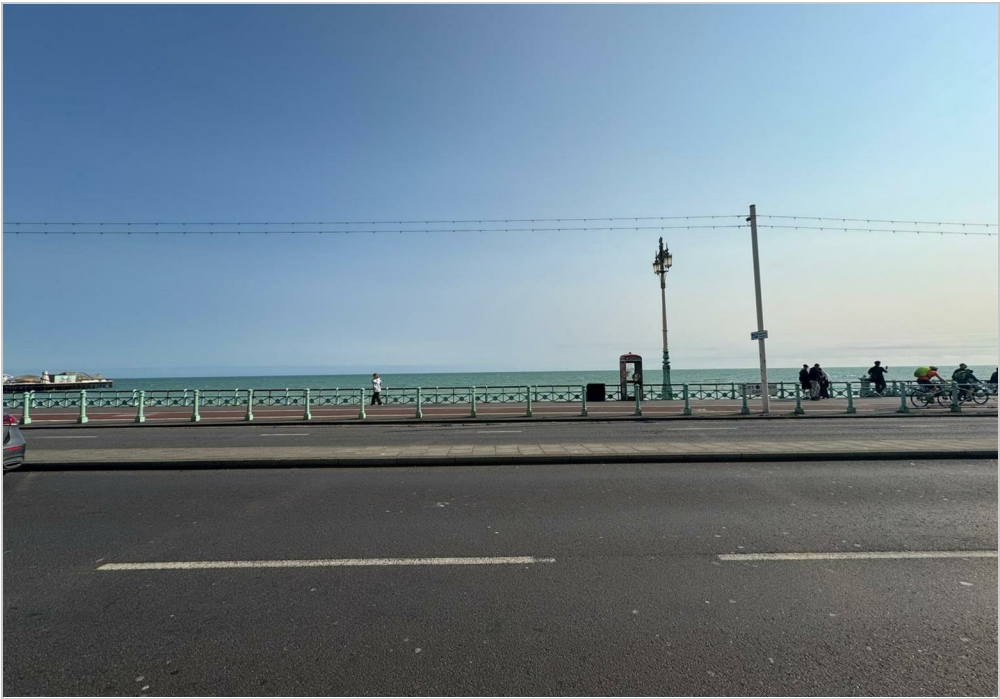
Brighton, BN1 1NA

Asking price £250,000

This stunning one-bedroom seafront apartment in Brighton offers a beautifully presented living space with breath taking views of the sea. The open plan layout creates a spacious and inviting atmosphere, perfect for relaxing or entertaining. The modern kitchen is fully equipped with all the necessary appliances and offers ample storage space. It seamlessly blends with the living room, creating a seamless flow throughout the apartment.

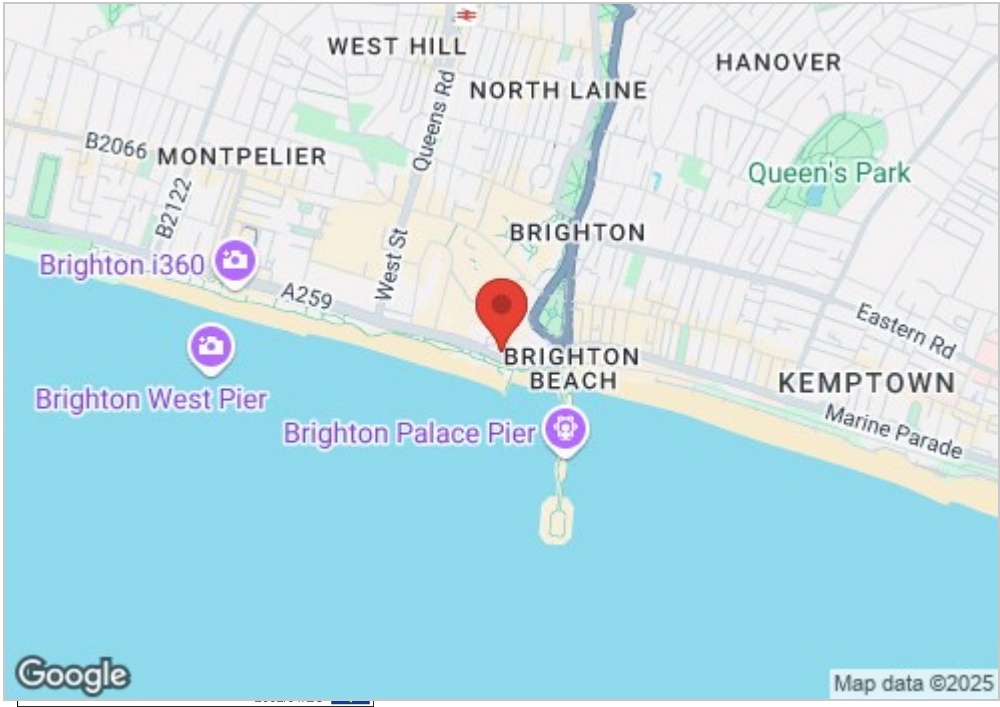
The bathroom is sleek and stylish, featuring modern fixtures and fittings. It provides a luxurious space to unwind and rejuvenate after a long day.

Nestled equal distance between Brighton Pier to the east and Brighton's West Pier to the west in the heart of Brighton's bustling and fashionable seafront, this top floor flat really does fully encompass seaside life and would make the most wonderful first time purchase or lock up and leave pied-à-terre!



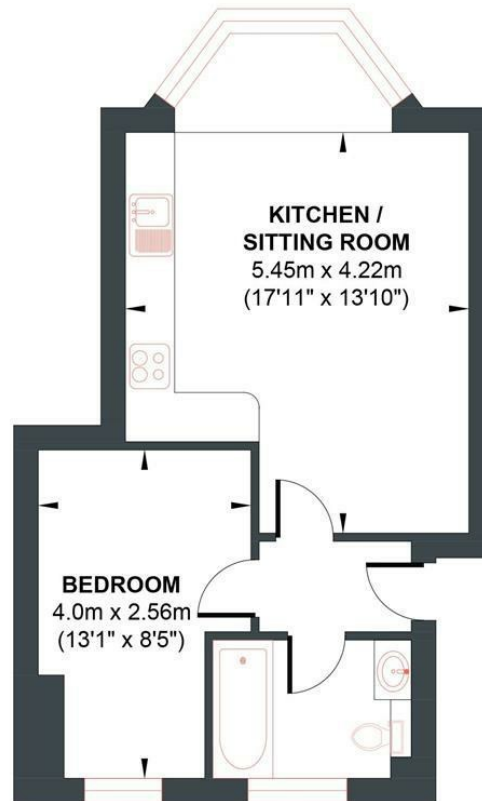
- Leasehold
- 1 Bedroom
- Great BTL
- Great Sea Views
- Great Location
- 86 Years Remaining
- 1 Bathroom 409 sq ft
- Great For a First Time Buyer
- Modern Decor

Energy Efficiency Rating		
	Current	Potential
Very energy efficient - lower running costs		
(92 plus) A		
(81-91) B		
(69-80) C		
(55-68) D		
(39-54) E		
(21-38) F		
(1-20) G		
Not energy efficient - higher running costs		
EU Directive 2002/91/EC		
England & Wales		



## KINGS ROAD

Approx. Gross Internal Floor Area 38.0 sq m / 409.0 sq ft  
Illustration for identification purposes only, measurements are approximate, not to scale.



SECOND FLOOR

**Approximate Floor Area**  
409.0 sq ft  
(38.0 sq m)

Foster & Co and their clients give notice that:

These sales particulars do not constitute any part of an offer of contract and are for guidance for prospective purchases only and should be not relied upon as a statement of fact.

We are not to be held responsible for material information that has not been given to us by our client at the time of marketing.

All measurements are approximate





