



Hillbrow Road

Brighton, BN1 5JP

£6,000 Per month

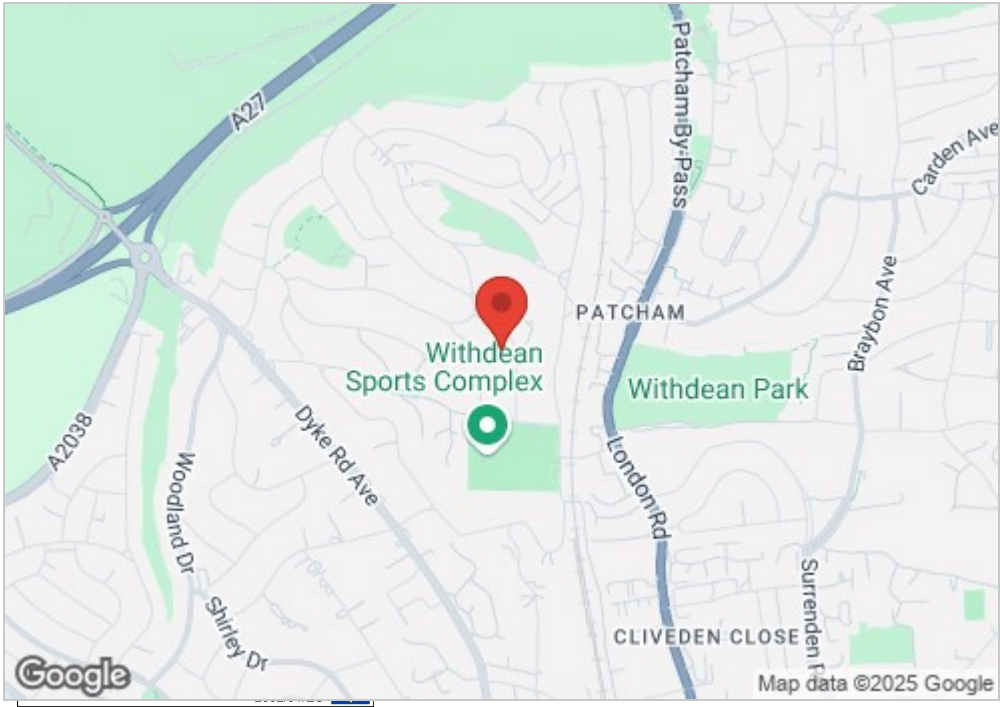
This impressive New Build Home presents 5 spacious double bedrooms, 3 tastefully appointed bathrooms, and spans over 2,251 square feet of thoughtfully designed living space.

Long term let
Available mid June 2025



- Newly built detached family home
- Private driveway with plenty of parking
- Stunning kitchen/dining room with bi-fold doors
- Separate utility room & ground floor shower room
- Large rear garden & patio space ideal for entertaining
- Modern family bathroom with bath & shower
- Main bedroom with en-suite
- Available early June
- EPC = B

Energy Efficiency Rating		
	Current	Potential
Very energy efficient - lower running costs		
(92 plus) A		
(81-91) B		
(69-80) C		
(55-68) D		
(39-54) E		
(21-38) F		
(1-20) G		
Not energy efficient - higher running costs		
England & Wales		
EU Directive 2002/91/EC		



HILLBROW ROAD

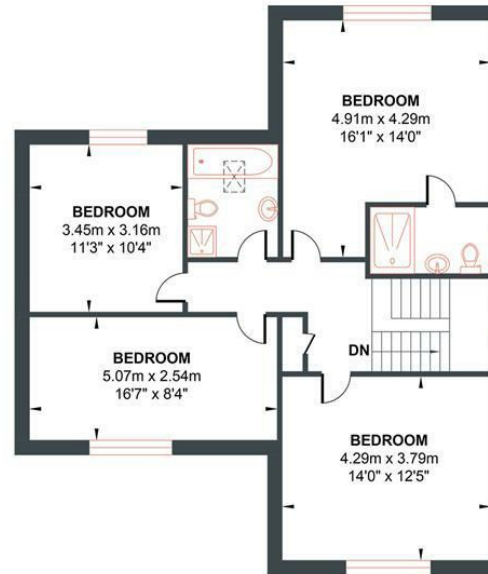
Approximate Gross Internal Area = 209.19 sq m / 2251.70 sq ft
Illustration for identification purposed only, measurements are approximate, not to scale.

**FOSTER
& CO.**



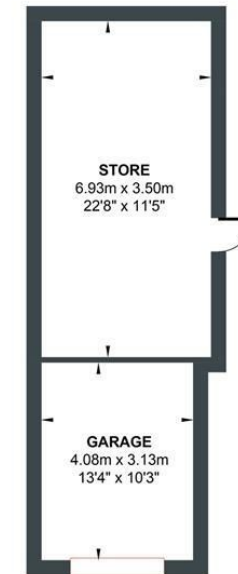
GROUND FLOOR

Approximate Floor Area
993.50 sq ft
(92.30 sq m)



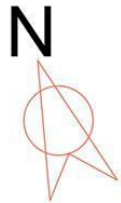
FIRST FLOOR

Approximate Floor Area
856.26 sq ft
(79.55 sq m)



OUTBUILDING

Approximate Floor Area
401.92 sq ft
(37.34 sq m)



Foster & Co and their clients give notice that:

These sales particulars do not constitute any part of an offer of contract and are for guidance for prospective purchases only and should be not relied upon as a statement of fact.

We are not to be held responsible for material information that has not been given to us by our client at the time of marketing.

All measurements are approximate

**FOSTER
& CO.**

