

Lancing, BN15 0PF

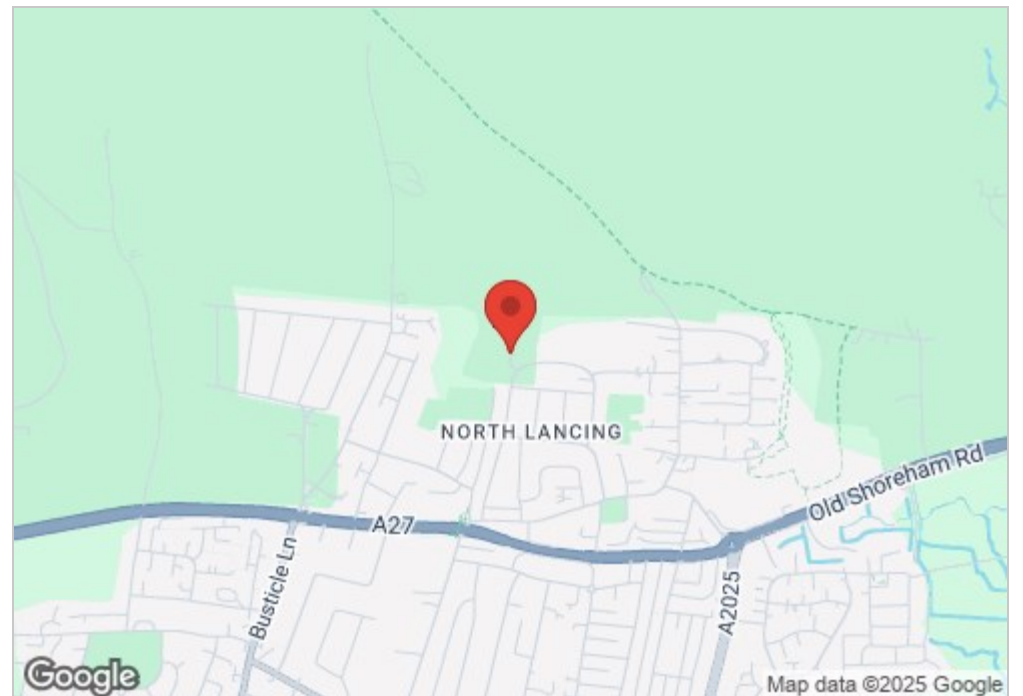
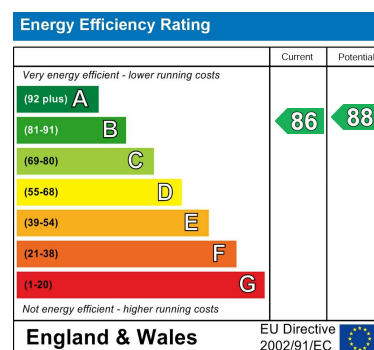
Asking price £1,000,000

Nestled in the charming coastal town of Lancing, this stunning detached house offers a perfect blend of modern living and natural beauty. With four spacious bedrooms with main bedroom having the luxury of an ensuite and walk in wardrobe, this property is ideal for families or those seeking extra space. The house boasts a well-appointed reception room, providing a welcoming area for relaxation and entertaining guests. The kitchen/dining area has a real modern finish with two sets of doors leading out to the garden.

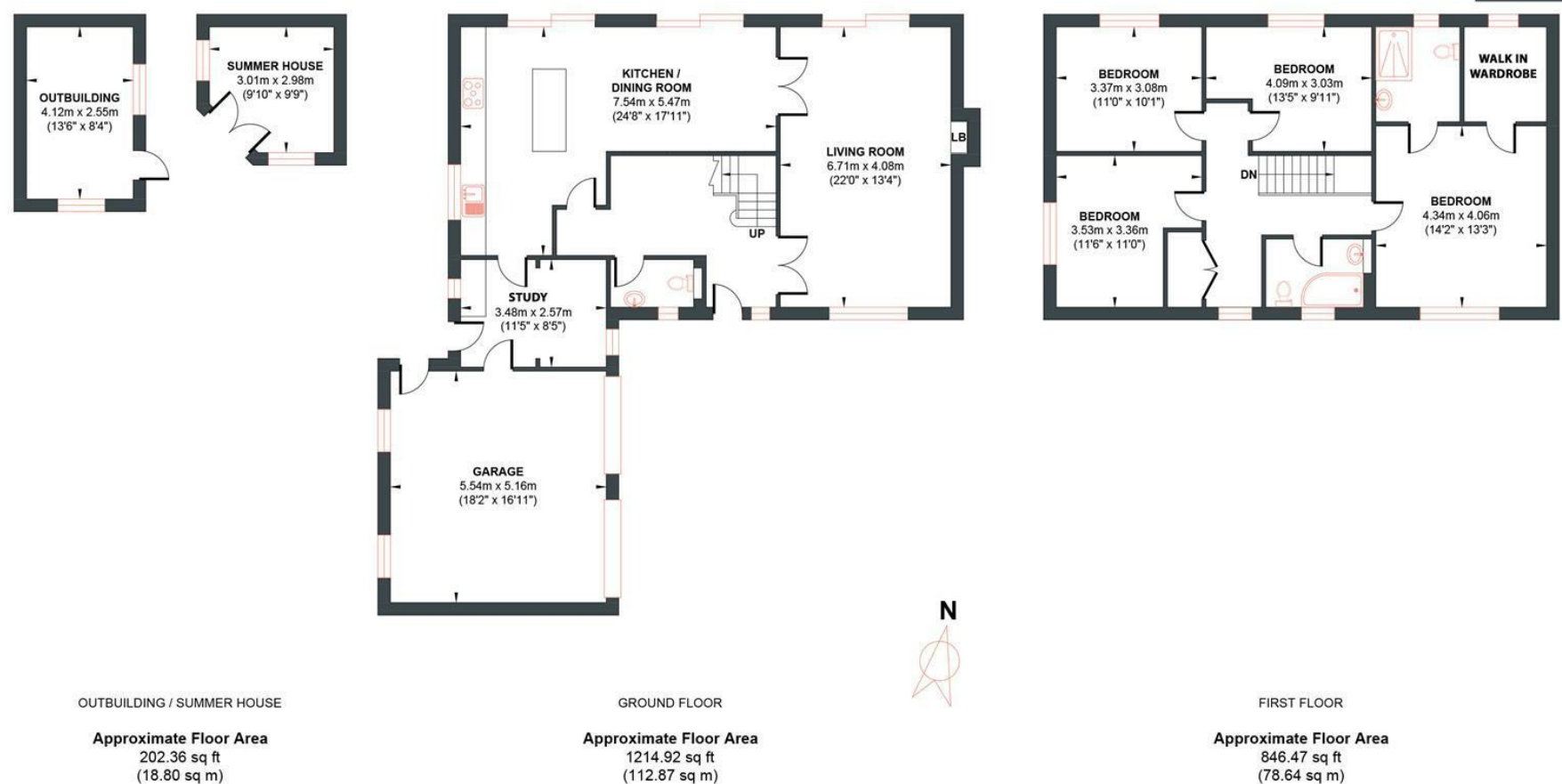
For those who appreciate outdoor space, the large garden is a true gem, offering ample room for gardening, play, or simply enjoying the fresh air. The property and garden also benefits from breathtaking views, allowing you to soak in the beauty of the surrounding national park landscape.

Parking is never a concern here, as the property accommodates a number of vehicles, complemented by a double garage for added convenience.

This exceptional home in Lancing is not just a place to live; it is a lifestyle choice, combining comfort, elegance, and the joys of nature. Do not miss the opportunity to make this remarkable property your own.



Approx. Gross Internal Floor Area (Including Garage & Excluding Outbuilding / Summer House) = 191.51 sq m / 2061.39 sq ft
Illustration for identification purposes only, measurements are approximate, not to scale.



Foster & Co and their clients give notice that:

These sales particulars do not constitute any part of an offer of contract and are for guidance for prospective purchases only and should be not relied upon as a statement of fact.

We are not to be held responsible for material information that has not been given to us by our client at the time of marketing.

All measurements are approximate

