

4 Tongdean Avenue

Hove, BN3 6TL

Guide price £2,500,000

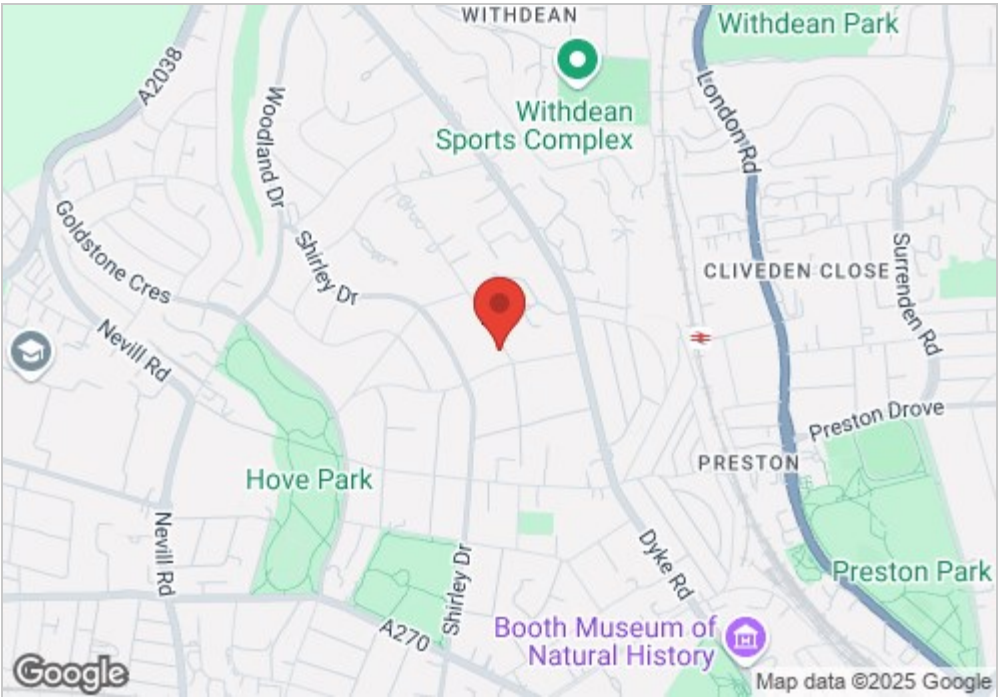
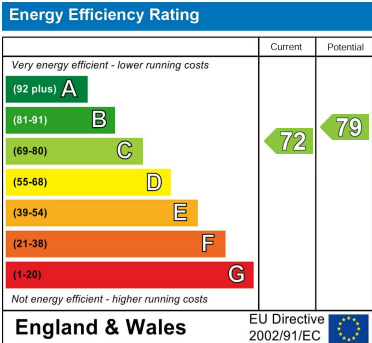
Guide Price £2,500,000-£2,700,000

A particularly impressive and substantial detached family home on the highly sought after Tongdean Avenue.

The property provides exceptional light throughout, there's spacious and expansive living space that spreads over 4 floors, together with a stunning large south facing rear garden and heated pool. The incredible home enjoys stunning far reaching views located in this sought after first class residential location within the Hove Park district.

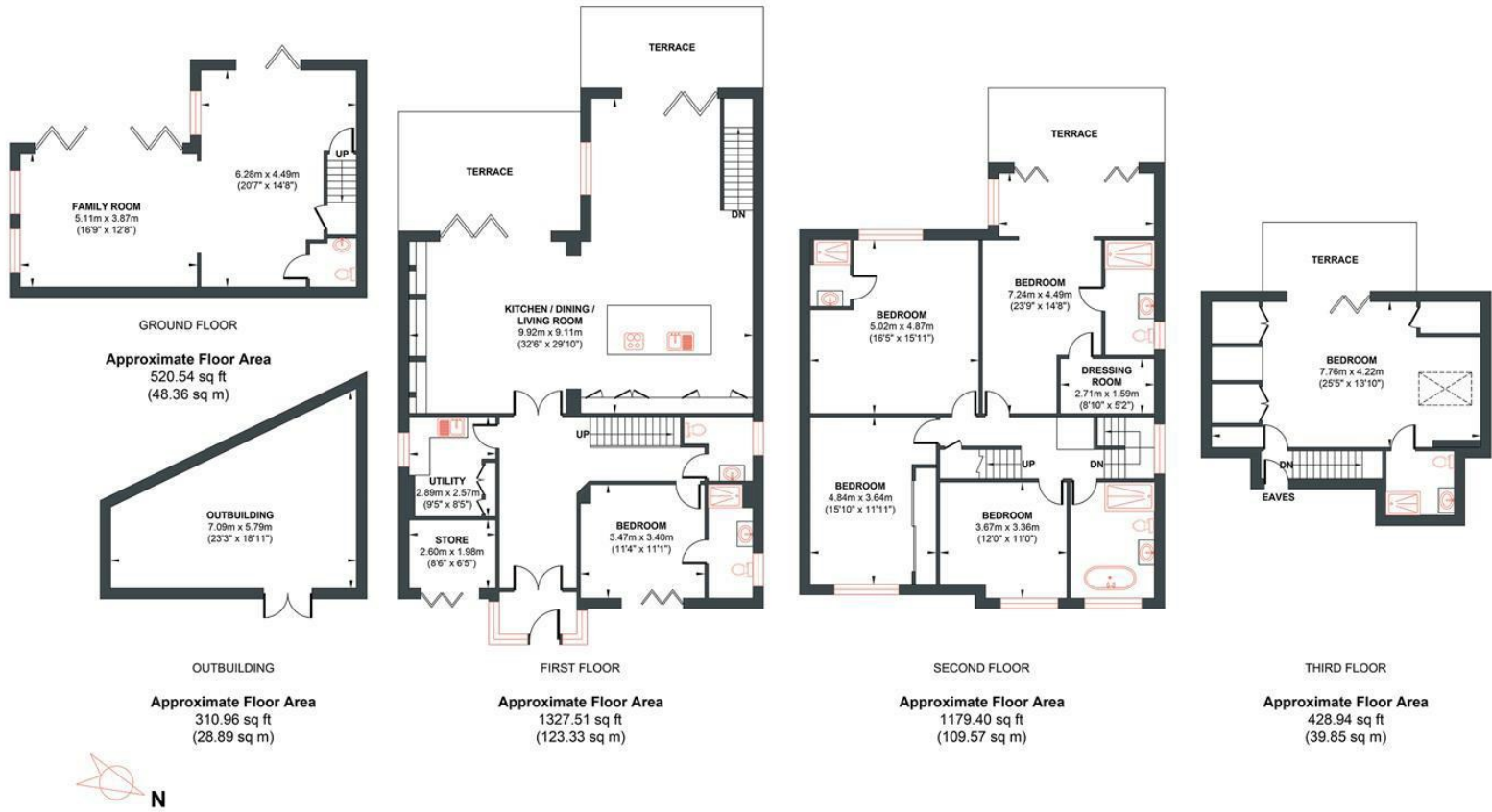
This fine modern home is offered for sale in pristine decorative condition throughout and provides nearly 3,500 sq feet of accommodation spanning four floors making this a comfortable and versatile family home consistent with modern expectations. With a light filled and airy interior and impressive open plan theme on the ground and lower floor the flexible space caters for most modern family requirements, with bedroom, living and office options seamlessly blended into the overall significant square footage. With an overall southerly orientation most principle rooms enjoy truly lovely far reaching views over the surrounding area and garden. Standing back from the road with ample off road parking the property boasts a stunning large and sunny south facing lawned rear garden together with a heated swimming and exercise pool with accompanying hot tub and substantial outbuilding which offers potential for various options. Tongdean Avenue is considered to be one of the most desirable residential settings in Hove, convenient for many amenities including local shops, bus services connecting with the City centre and of course the delightful Hove Park offering open spaces and recreational amenities. This combined with the superb south facing aspect makes an early viewing absolutely essential to fully appreciate this property.

- Impressive Family Home in First Class Setting
 - Nearly 3,500 sq feet of Flexible and Versatile Accommodation
 - Stunning Far Reaching Southerly Views
 - Heated Swimming Pool
- Light and Expansive Living Space Spanning 4 Floors
 - Beautifully Presented and Appointed
 - Large, Sunny South Facing Lawned Garden
 - Must be Viewed



TONGDEAN AVENUE

Approx. Gross Internal Floor Area (Excluding Outbuilding) = 321.11 sq m / 3456.39 sq ft
Illustration for identification purposed only, measurements are approximate, not to scale.



Foster & Co and their clients give notice that:
These sales particulars do not constitute any part of an offer of contract and are for guidance for prospective purchases only and should be not relied upon as a statement of fact.
We are not to be held responsible for material information that has not been given to us by our client at the time of marketing.
All measurements are approximate

