

Barrowfield Lodge Barrowfield Drive  
Hove, BN3 6TQ

Asking price £875,000

This immaculately presented ground floor garden flat in Hove is finished to an exceptional standard, offering a perfect blend of period charm and contemporary comfort. The home features tall ceilings, intricate architraves, and stunning Canadian pine parquet floors, all complemented by a soft neutral color scheme. These details flow seamlessly from the impressive entrance hallway into each generously proportioned room, showcasing a remarkable attention to detail.

The main reception room is spacious and inviting, with dual French doors opening onto a red brick patio, offering delightful views of the classic English country garden. A magnificent marble fireplace serves as a striking focal point in this room. Adjacent to the reception is a versatile TV/sitting room, which also features a fireplace and bespoke bookcases, providing ample storage. This room leads into a spacious Amdega conservatory, which benefits from energy-efficient K Glass, allowing light to flood the space.

The well-appointed kitchen is fitted with bespoke Shaker-style cabinets and tall larder cupboards, blending modern convenience with the property's period character.

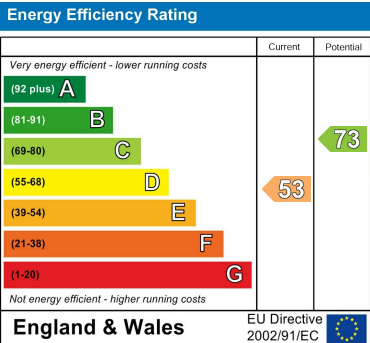
The generously sized master bedroom offers views of the landscaped gardens and features bespoke wardrobes that provide both style and functionality. Bedroom two is also of a good size and benefits from bespoke fitted wardrobes and an en suite shower room, designed with a contemporary wall-hung basin, LED mirrored cabinet, and a large rain shower, all set against sleek taupe tiles.

A well-proportioned family bathroom features a full-sized contemporary bath with a side filler and overhead shower. Chrome insert strips add a plush finish to the glossy tiles, completing this elegant space.

The south/southeast-facing landscaped gardens wrap around the property, offering two separate terraces, ideal for enjoying a morning coffee or a family meal. A raised lawn area provides space for children to play.

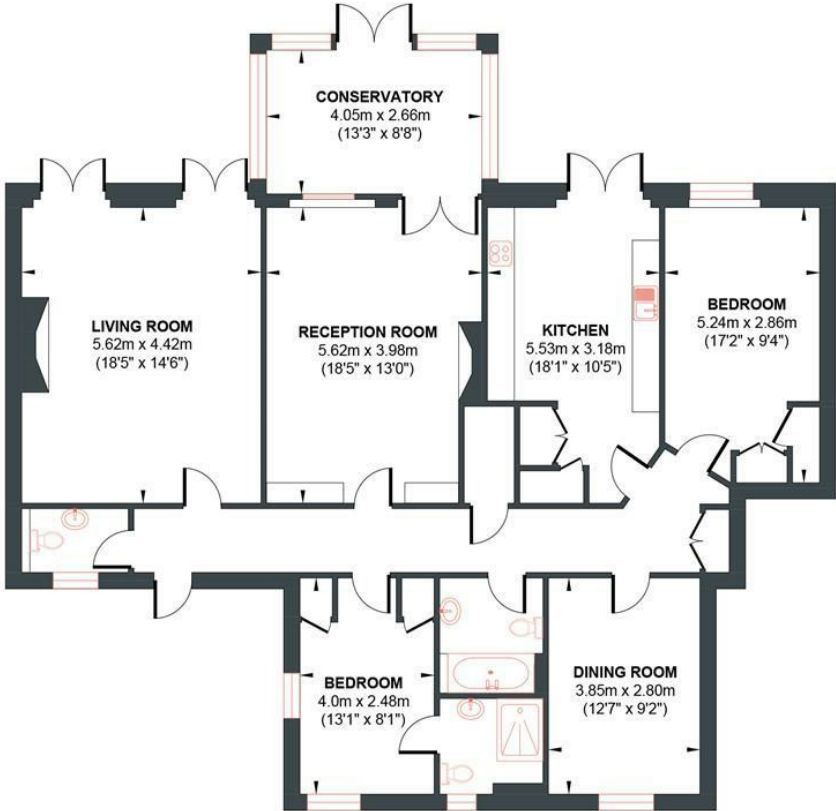
Residents of Barrowfield Lodge enjoy the benefit of private allocated parking, adding convenience to this already exceptional home.

- Immaculately Presented 3 Bedroom Ground Floor Flat
  - Parquet Flooring Throughout
  - Contemporary Kitchen with Miele Appliances
  - South/South-East-Facing Landscaped Gardens
  - Private Allocated Parking
- 2 Bathrooms
  - 2 Reception Rooms
  - Amdega Conservatory Energy Efficient K Glass
  - Separate Storage Room
  - Easy Commute to Train Stations and Motorway



BARROWFIELD DRIVE

Approx. Gross Internal Floor Area 140.22 sq m / 1509.31 sq ft  
Illustration for identification purposed only, measurements are approximate, not to scale.



GROUND FLOOR

Approximate Floor Area  
1509.31 sq ft  
(140.22 sq m)

