



Whistledown Birchwood Grove Road

Burgess Hill, RH15 0DL

Asking price £1,200,000

Nestled in the desirable area of Birchwood Grove Road, this stunning new build detached house offers a perfect blend of modern living and thoughtful, elegant design. Spanning an impressive 2,024 square feet, this property boasts three spacious first floor bedrooms each with their own luxurious en-suite, and each thoughtfully designed to provide effortless comfort and tranquillity. A further bedroom and shower can be found on the ground floor.

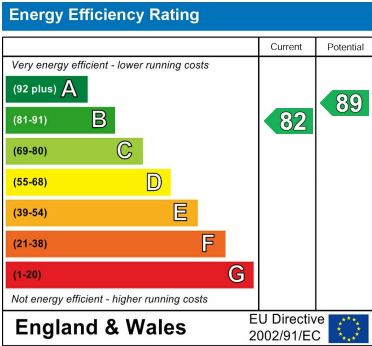
Upon entering, you are immediately welcomed by sense of openness and light, enhancing the overall ambiance. The exceptional finish throughout the property reflects a commitment to quality and style, making it a truly exceptional home.

The heart of the home is undoubtedly the exquisite Rever kitchen, which is equipped with modern appliances and ample storage, perfect for culinary enthusiasts. The property features slimline Cortizo aluminium windows, doors and skylights, paired with solar gain glass ensuring energy efficiency and a bright and airy atmosphere.

For those who value comfort, the air source heat pump provides a warm and inviting environment throughout the year. Outside, the property offers ample parking for at least three vehicles behind electric entrance gates, a rare convenience in today's market

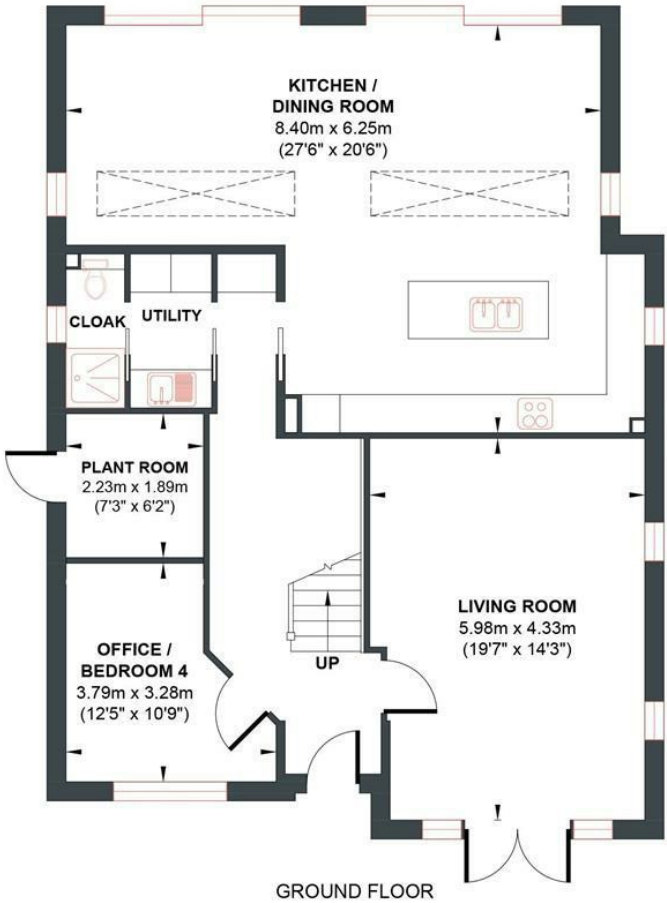
This remarkable home is not just a place to live; it is a lifestyle choice, combining luxury, sustainability, and practicality in one of Burgess Hill's most sought-after locations. Whether you are a growing family or looking to downsize without compromising on quality, this property is sure to impress. Do not miss the opportunity to make this exquisite house your new home.

- New build Detached House
  - Stunning Rever Kitchen
  - Ample off street parking
  - Solar gain Windows
  - 4 bathrooms
- 3/4 Bedrooms
  - Underfloor Heating
  - Vaulted Ceilings
  - 2025 sqft
  - End of Chain

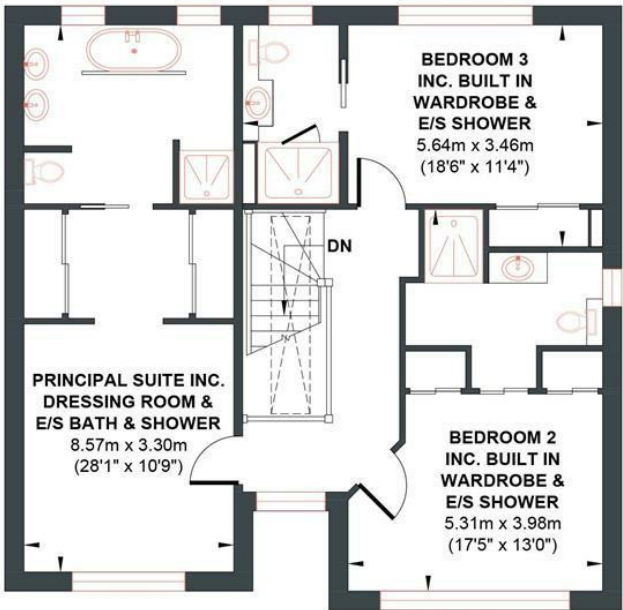


BIRCHWOOD GROVE

Approx. Gross Internal Floor Area 188.04 sq m / 2024.25 sq ft  
Illustration for identification purposed only, measurements are approximate, not to scale.



Approximate Floor Area  
1160.88 sq ft  
(107.85 sq m)



Approximate Floor Area  
863.37 sq ft  
(80.19 sq m)

