

17 Woodland Drive
Hove, BN3 6DH

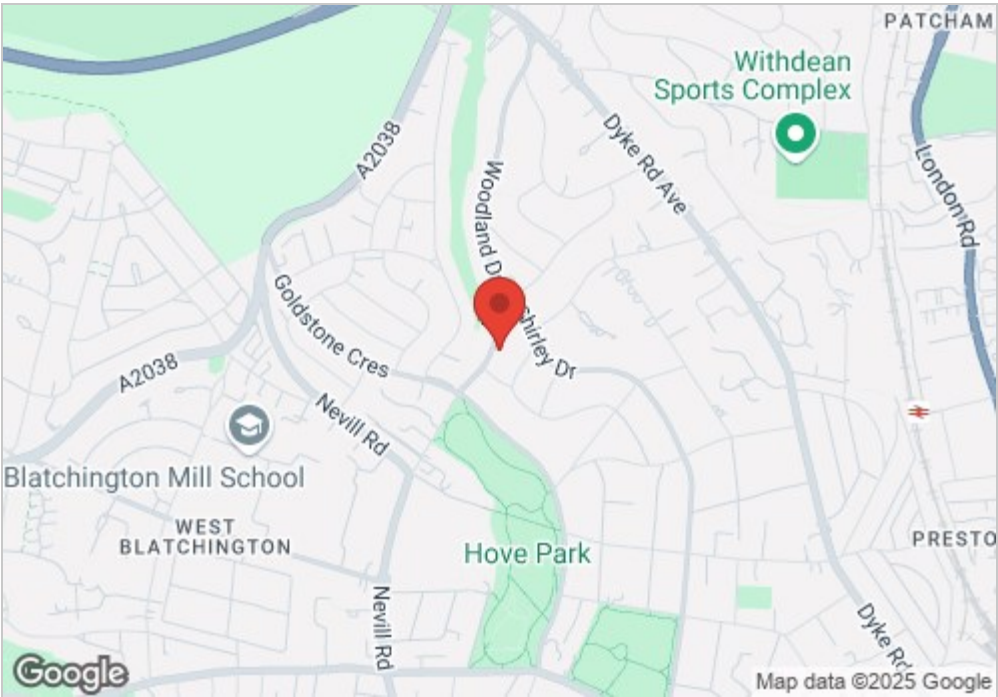
Asking price £1,550,000

Foster & Co are delighted to offer for sale this attractive detached Hove Park house that spans over 2,165 square feet boasting a large Southerly facing Garden and a private driveway leading to a garage.

The accommodation in brief comprises of: wide entrance hall, front 17'6ft living room, large rear open plan kitchen/dining family room with full height sliding doors to the garden, separate utility room and pantry. Also on the ground floor there is a w.c and access to the integral garage.

The first-floor features 4 large bedrooms, en-suite shower room to the master bedroom and a luxury fitted family bathroom.

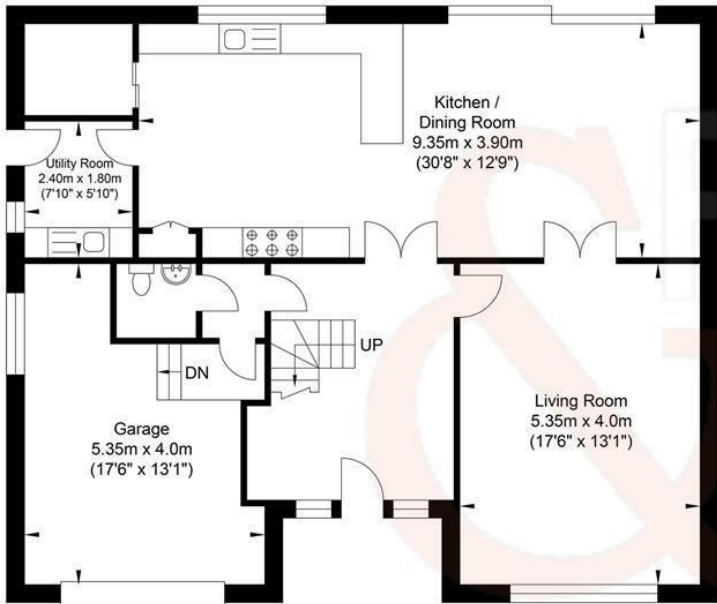
This property offers further potential to extend into the loft and out to the rear.



- 4 Double Bedroom Detached House
- Seperate Living Room
- En-Suite To Master Bedroom
- Down Stairs WC
- Large Southerly Facing Garden
- Large Kitchen Family Room
- Modern Family Bathroom
- Garage
- Utility Room
- Home Office/ Garden Room

Energy Efficiency Rating		Current	Potential
Very energy efficient - lower running costs			
(92 plus) A			85
(81-91) B			
(69-80) C		74	
(55-68) D			
(39-54) E			
(21-38) F			
(1-20) G			
Not energy efficient - higher running costs			
England & Wales		EU Directive 2002/91/EC	

Woodland Drive, Hove



Ground Floor
Approximate Floor Area
1082.95 sq ft
(100.61 sq m)



First Floor
Approximate Floor Area
1082.95 sq ft
(100.61 sq m)

Approximate Gross Internal Area = 201.22 sq m / 2165.91 sq ft
Illustration for identification purposes only, measurements are approximate, not to scale.