



Brunswick Square

Hove, BN3 1EH

Asking price £1,200,000

A stunning Grade 1, first floor two bedroom two bathroom apartment with a share of freehold and a balcony with views over Brunswick Square and the sea.

This iconic square surrounds manicured gardens for the residents to use at their leisure, plus the sparkling sea and Hove Lawns are visible from the living room. With the vibrant shops, restaurants, cafes and bars of Western Road just a stroll away, as well as two commuter stations; this apartment would perfectly suit those wishing to live in luxury by the sea.

The living room is a true standout, featuring a large bay-fronted window that offers a picturesque view of Brunswick Square and the sea beyond. This elegant space, measuring approx 22'0" x 21'5" boasts beautifully restored wooden flooring, high grand ceilings adorned with period cornicing and ceiling rose details. A stunning marble fire mantle frames the wood-burning fireplace, adding to the room's charm and character.

The open-plan kitchen is thoughtfully designed, offering ample storage space and a central island/breakfast bar is ideal for casual dining. The principal bedroom is a serene retreat, flooded with natural light and equipped with floor-to-ceiling built-in wardrobes. It also benefits from a luxurious en-suite shower room. The second bedroom is also a generous double, while a separate family bathroom serves the property.

This apartment seamlessly combines period elegance with modern comforts, making it a perfect blend of style and functionality.

This incredible property is beautifully situated in a popular area with lots of local shops and the beach on your doorstep. The city centre shopping districts and parks are also within easy reach, and it also offers easy access to Brighton and Hove Stations which have direct and fast links to the airports and London.

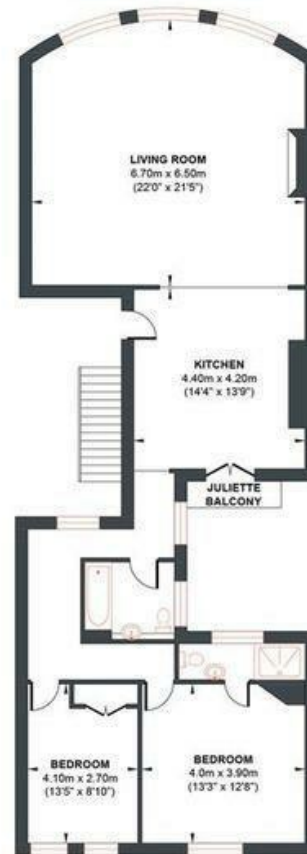
- Brunswick Square
- 2 Bedrooms
- First Floor
- Balcony
- Sea View
- Share Of Freehold
- 2 Bathrooms
- Stunning Decor
- Kitchen
- Stunning Front Living Room

Energy Efficiency Rating		
	Current	Potential
Very energy efficient - lower running costs		
(92 plus) A		
(81-91) B		
(69-80) C		
(55-68) D		
(39-54) E		
(21-38) F		
(1-20) G		
Not energy efficient - higher running costs		
England & Wales		
EU Directive 2002/91/EC		



BRUNSWICK SQUARE

Approx. Gross Internal Floor Area = 105.03 sq m / 1130.53 sq ft
Illustration for identification purposed only, measurements are approximate, not to scale.



Approximate Floor Area
1130.53 sq ft
(105.03 sq m)



Foster & Co and their clients give notice that:

These sales particulars do not constitute any part of an offer of contract and are for guidance for prospective purchases only and should be not relied upon as a statement of fact.

We are not to be held responsible for material information that has not been given to us by our client at the time of marketing.

All measurements are approximate



