

15 Vernon Terrace
Brighton, BN1 3JG

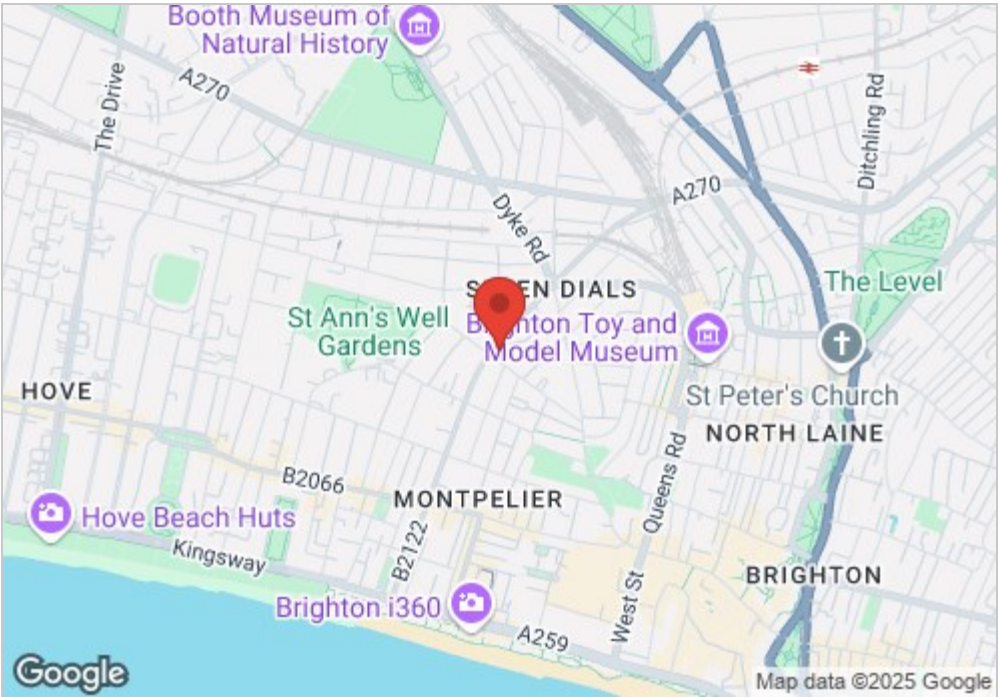
Guide price £475,000

Nestled in the heart of Seven Dials, this exquisite first-floor two-bedroom mansion flat offers an elegant blend of period charm and contemporary living. Spanning an impressive 841 sq. ft., this stunning home boasts high ceilings, abundant natural light, and breathtaking views over the beautifully maintained Lilwhites Ground—a tranquil green space for local residents. With its prime location, you’re just a short stroll from Brighton’s vibrant city centre and the mainline train station, making this an ideal home for commuters and city lovers alike.



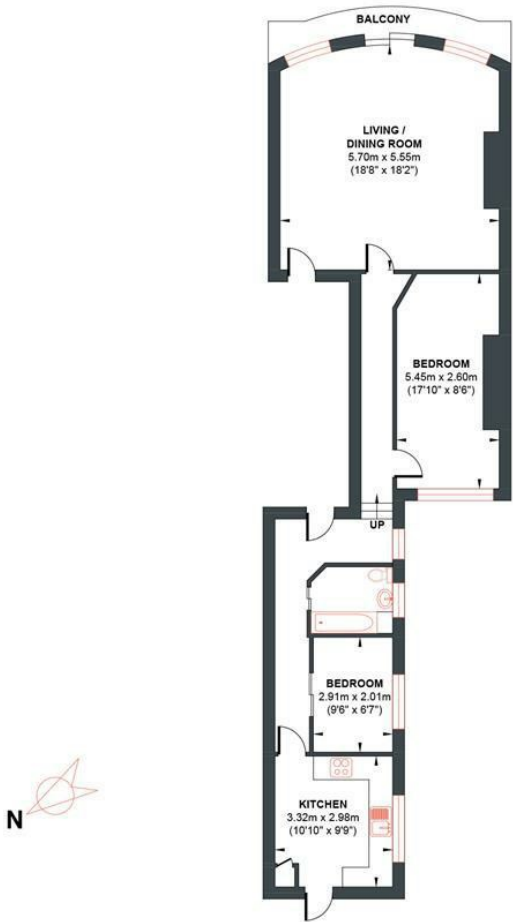
- 841 Square Feet
- Full Height Sash Windows Leading To Front Balcony
- 2 Bedrooms
- Share Of Freehold
- Walking Distance To Brighton Train Station
- First Floor Mansion Flat
- Separate Kitchen Breakfast Room
- Family Bathroom
- Central Seven Dials Location
- Period Features & High Ceilings

| Energy Efficiency Rating | | |
|---|---------|-----------|
| | Current | Potential |
| Very energy efficient - lower running costs | | |
| (92 plus) A | | |
| (81-91) B | | |
| (69-80) C | | |
| (55-68) D | | |
| (39-54) E | | |
| (21-38) F | | |
| (1-20) G | | |
| Not energy efficient - higher running costs | | |
| | 70 | 79 |
| England & Wales | | |
| EU Directive 2002/91/EC | | |



VERNON TERRACE

Approx. Gross Internal Floor Area 78.21 sq m / 841.84 sq ft
Illustration for identification purposed only, measurements are approximate, not to scale.



FIRST FLOOR FLAT
Approximate Floor Area
841.84 sq ft
(78.21 sq m)

