



**FOSTER**  
& CO.



Meadow Close

Hove, BN3 6QQ

Guide price £2,500,000



- GUIDE PRICE £2,500,000 - £2,750,000

■ 3 BEDROOMS IN THE ANNEX

■ 3255 SQFT

■ 2 RECEPTION ROOMS

■ SEA VIEWS
- DETACHED

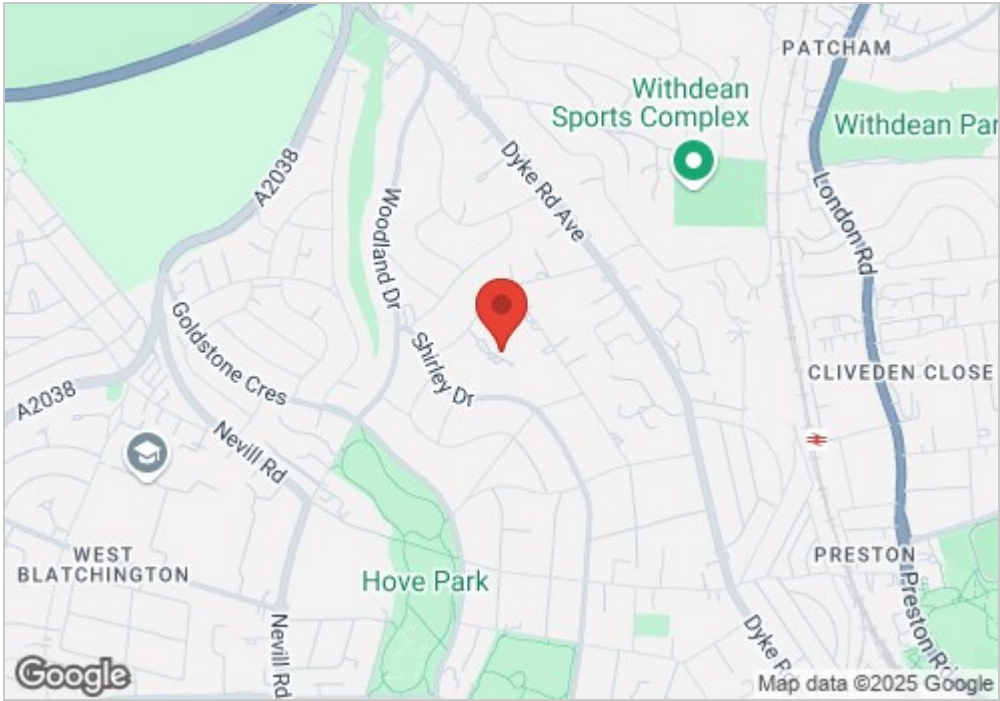
■ 3 BEDROOMS IN THE MAIN HOUSE

■ HUGE LOFT ROOM

■ GARAGE

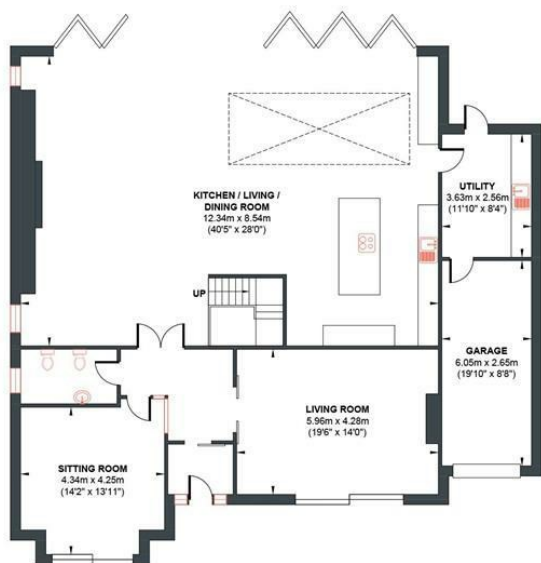
■ OFF ROAD PARKING

Energy Efficiency Rating		
	Current	Potential
Very energy efficient - lower running costs		
(92 plus) A		
(81-91) B		
(69-80) C		
(55-68) D		
(39-54) E		
(21-38) F		
(1-20) G		
Not energy efficient - higher running costs		
England & Wales		
EU Directive 2002/91/EC		



# MEADOW CLOSE

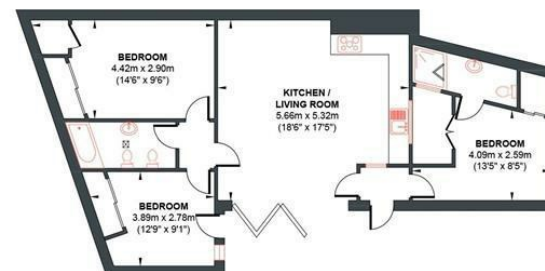
Approx. Gross Internal Floor Area (Including Garage & Excluding Outbuilding) = 302.42 sq m / 3255.21 sq ft  
Illustration for identification purposed only, measurements are approximate, not to scale.



GROUND FLOOR  
Approximate Floor Area  
2075.06 sq ft  
(192.78 sq m)



FIRST FLOOR  
Approximate Floor Area  
1180.15 sq ft  
(109.64 sq m)



OUTBUILDING  
Approximate Floor Area  
843.13 sq ft  
(78.33 sq m)

Foster & Co and their clients give notice that:

These sales particulars do not constitute any part of an offer of contract and are for guidance for prospective purchases only and should be not relied upon as a statement of fact.

We are not to be held responsible for material information that has not been given to us by our client at the time of marketing.

All measurements are approximate





