





Flat 6 Seafield Road  
Hove, BN3 2TN

£325,000

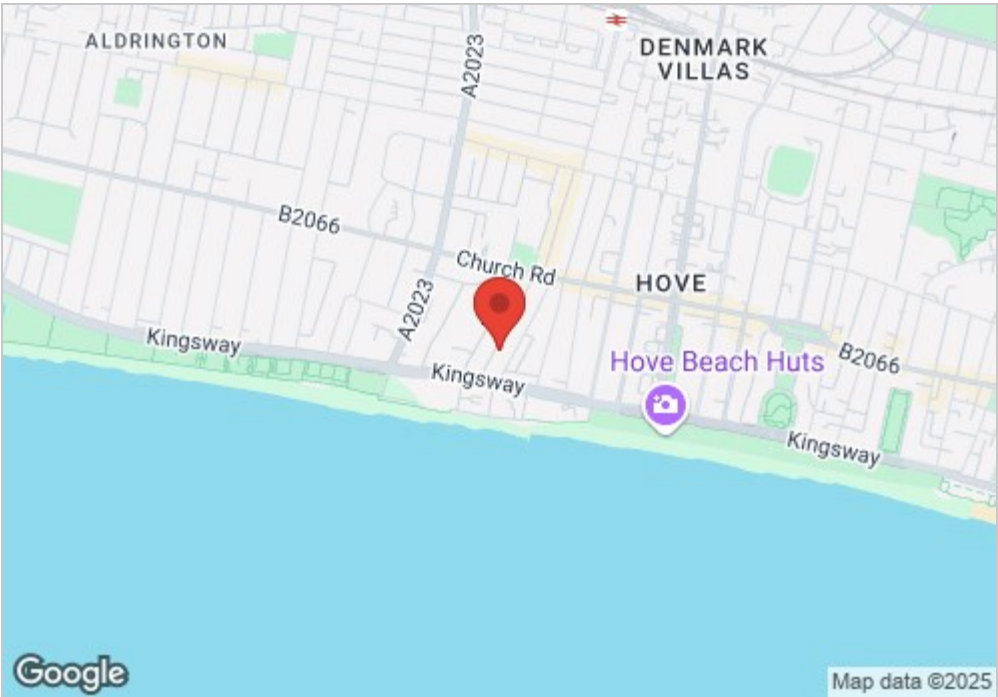
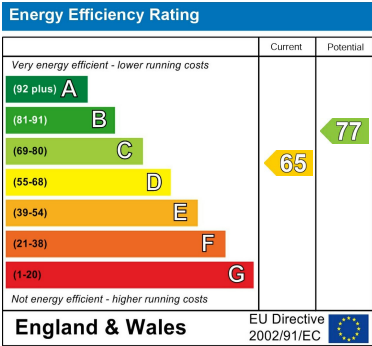
Welcome to Seafield Road, Hove - a charming location for this spacious two-bedroom flat that occupies the entire top floor. Situated in the heart of central Hove, this property offers the perfect blend of convenience and coastal living, being just minutes away from the picturesque Hove seafront.

This recently refurbished flat boasts a modern interior, providing a fresh canvas for you to make it your own. With no onward chain, the process of making this flat your new home is made even smoother. The close proximity to Hove mainline station ensures easy access to transportation links, making commuting a breeze.

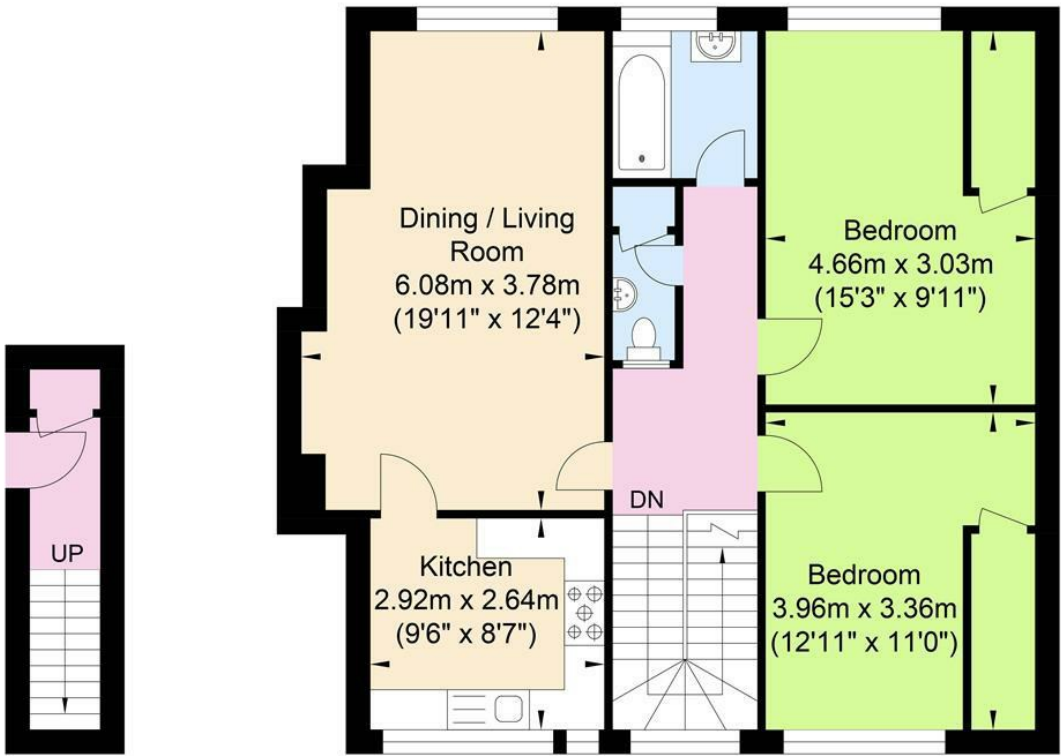
Tenure: Leasehold: 125 Years From July 2022  
Maintenance Fee: £295 Per Month  
EPC Rating: D  
Council Tax Band: B



- Top Floor
- Separate Kitchen
- Long Lease
- Bathroom
- Close to Shops and Restaurants
- 2 Large Bedrooms
- Living Room
- No Chain
- Close to Hove Seafront



Seafield Road



Approximate Floor Area  
42.62 sq ft  
(3.96 sq m)

Approximate Floor Area  
809.12 sq ft  
(75.17 sq m)



Approximate Gross Internal Area = 79.13 sq m / 851.74 sq ft  
Illustration for identification purposes only, measurements are approximate, not to scale.