



Roedean Crescent

Brighton, BN2 5RH

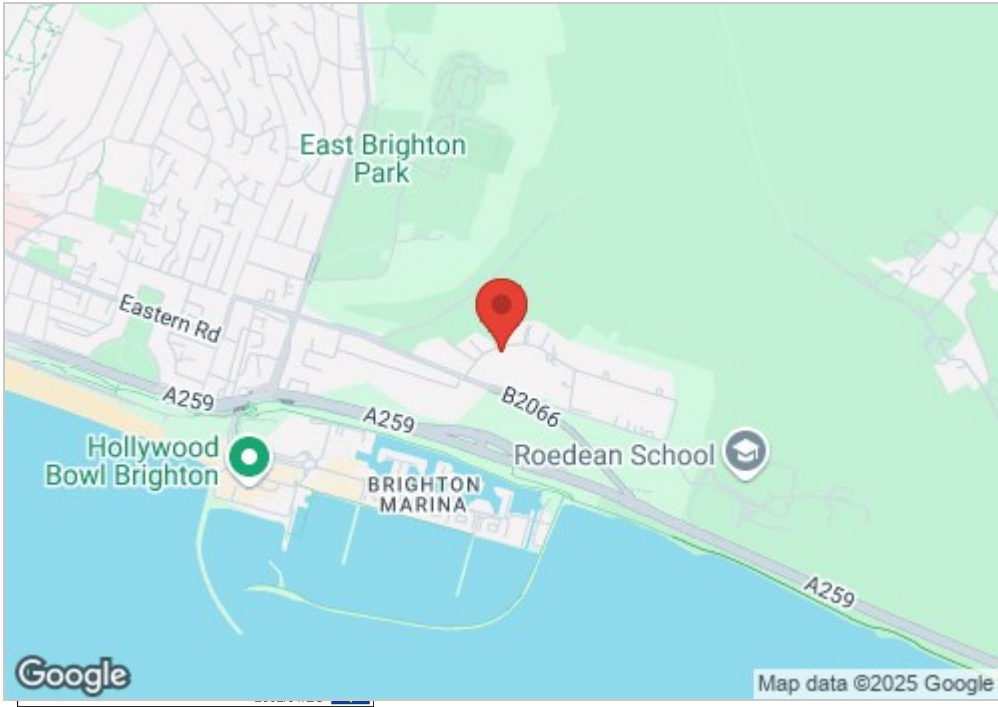
Guide price £3,250,000

4 Roedean Crescent is an exceptional beautiful architect designed family home just over 4700 sq ft which was originally built in 2014 and modified further by the current owners. The house has been designed to optimise the exceptional sea views. A part glazed front door leads into the spacious entrance vestibule, from which a further door leads into the welcoming double height entrance hall which provides an instant sense of light and space.



- Detached
- Stunning Sea Views
- Elevated Position
- 100ft Frontage
- Close to Brighton College and Roedean School
- Gated
- South Facing Garden
- Off Street Parking with Detached Garage
- Over 4700 sqft
- 6 Bedrooms and a Gym

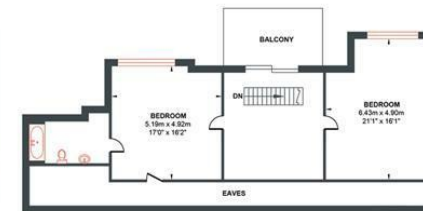
Energy Efficiency Rating		
	Current	Potential
Very energy efficient - lower running costs		
(92 plus) A	87	87
(81-91) B		
(69-80) C		
(55-68) D		
(39-54) E		
(21-38) F		
(1-20) G		
Not energy efficient - higher running costs		
England & Wales		
EU Directive 2002/91/EC		



ROEDEAN CRESCENT

Approximate Gross Internal Area = 443.60 sq m / 4774.87 sq ft

Illustration for identification purposed only, measurements are approximate, not to scale.



Foster & Co and their clients give notice that:

These sales particulars do not constitute any part of an offer of contract and are for guidance for prospective purchases only and should be not relied upon as a statement of fact.

We are not to be held responsible for material information that has not been given to us by our client at the time of marketing.

All measurements are approximate



