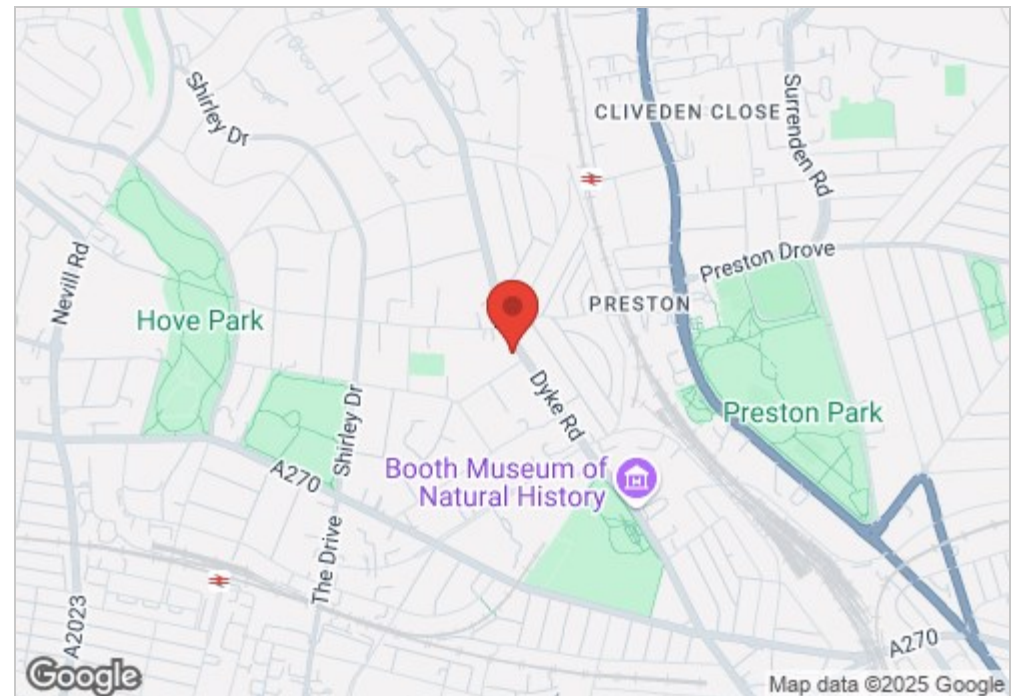


Hove, BN3 6PB

This impressive 3,126 sq. ft. detached home features a stunning 150-ft south-facing rear garden and breathtaking sea views. With five double bedrooms and three bathrooms, this property offers ample space for comfortable family living.

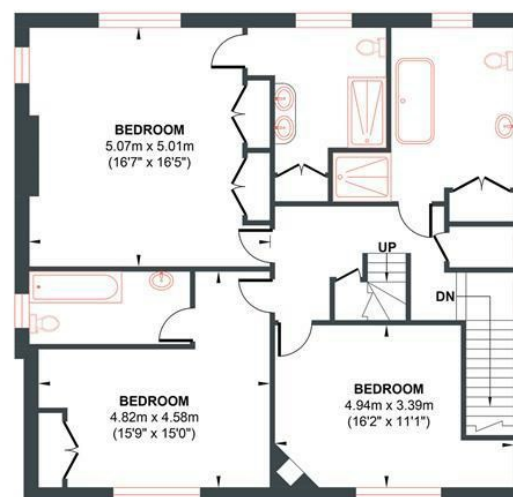


- | Energy Efficiency Rating | | Current | Potential |
|---|--|----------------------------|-----------|
| <i>Very energy efficient - lower running costs</i>
(92 plus) A
(81-91) B
(69-80) C
(55-68) D
(39-54) E
(21-38) F
(1-20) G | | 53 | 75 |
| <i>Not energy efficient - higher running costs</i> | | | |
| England & Wales | | EU Directive
2002/91/EC | |



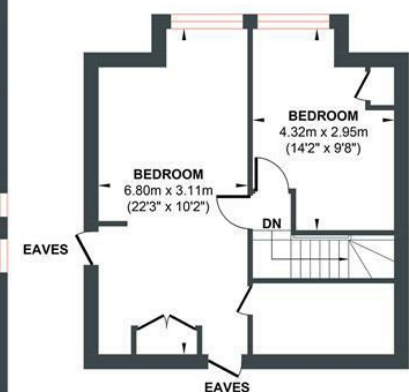
GROUND FLOOR

Approximate Floor Area
1661.94 sq ft
(154.40 sq m)



FIRST FLOOR

Approximate Floor Area
1036.56 sq ft
(96.30 sq m)



SECOND FLOOR

Approximate Floor Area
427.97 sq ft
(39.76 sq m)

All measurements are approximate

