



**FOSTER**  
& CO.



# Hill Brow

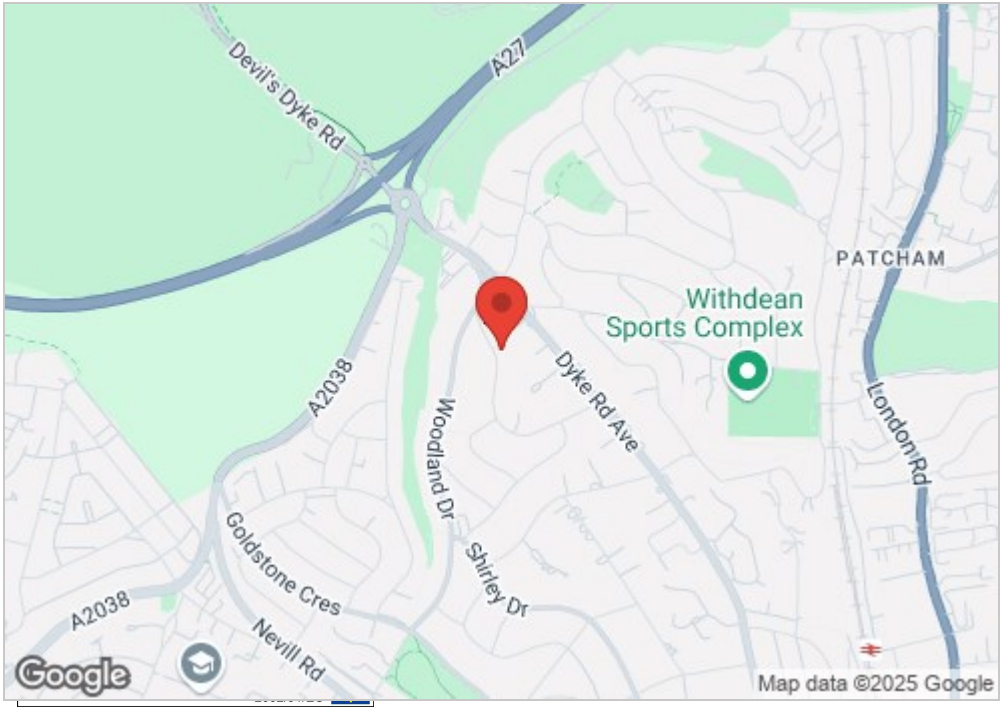
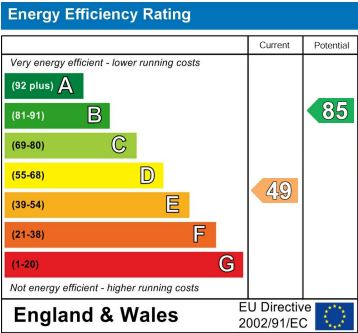
Hove, BN3 6DD

Asking price £3,795,000

This exceptional home offers not just luxury but the latest in energy efficiency, technology, and thoughtful design—truly a one-of-a-kind opportunity.

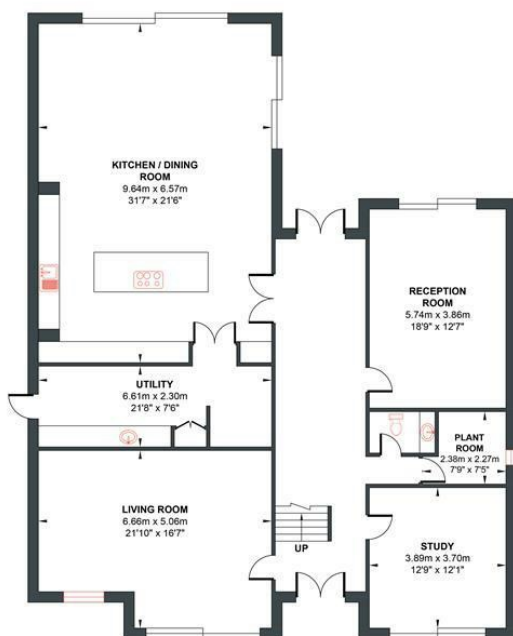


- Detached
- 5 Bedrooms
- High Spec Finish
- Bespoke Rokpunt German Kitchen
- 3 Reception rooms
- Stunning Sea Views
- Double Garage
- Huge Master Suite
- Swimming pool with glass viewing panel
- Control4 Smart Home System



# HILL BROW

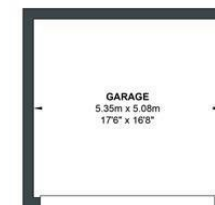
Approx. Gross Internal Floor Area (Including Garage) 443.97 sq m / 4843.42 sq ft  
Illustration for identification purposes only, measurements are approximate, not to scale.



GROUND FLOOR  
Approximate Floor Area  
2000.15 sq ft  
(185.82 sq m)



FIRST FLOOR  
Approximate Floor Area  
1956.55 sq ft  
(181.77 sq m)



GARAGE  
Approximate Floor Area  
292.56 sq ft  
(27.18 sq m)



SECOND FLOOR  
Approximate Floor Area  
594.16 sq ft  
(55.20 sq m)

Foster & Co and their clients give notice that:

These sales particulars do not constitute any part of an offer of contract and are for guidance for prospective purchases only and should be not relied upon as a statement of fact.

We are not to be held responsible for material information that has not been given to us by our client at the time of marketing.

All measurements are approximate





