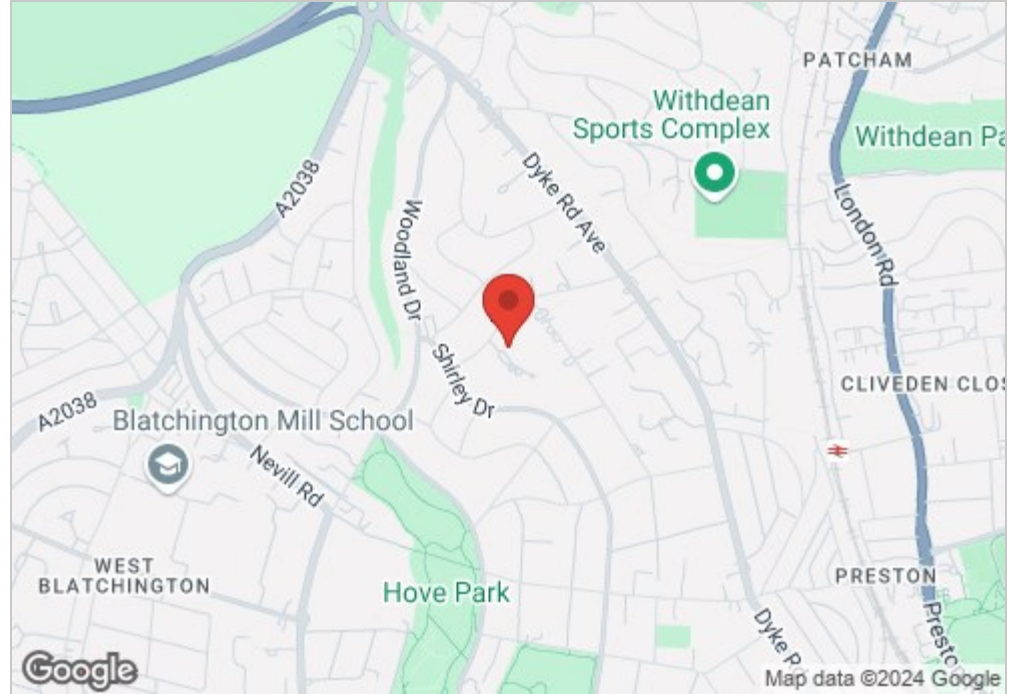


3 Meadow Close

Hove, BN3 6QQ

Guide price £2,250,000

Stunning 5-Bedroom Detached House in Hove with panoramic sea views.

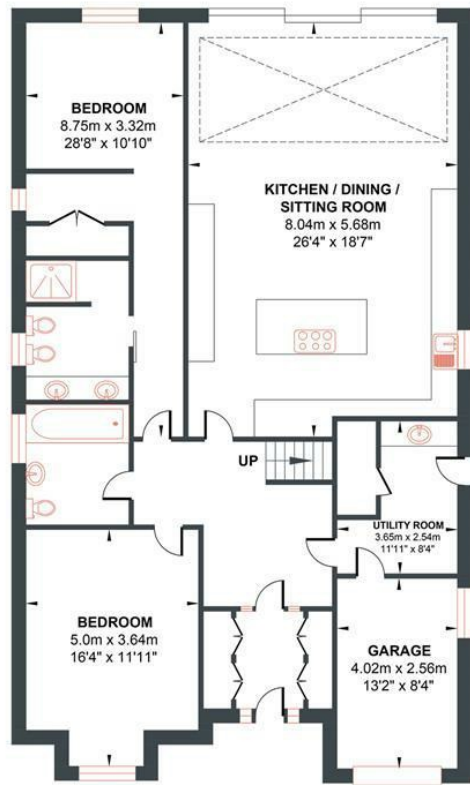


- Detached 5 Bedrooms
- Lutron Lighting System
- Smart House fully CAT 6 cabled
- Sea Views
- Boot/Utility Room
- Quiet Cul-De-Sac
- Two Electric Charging Points
- Summer House
- Underfloor heating throughout
- No Chain

Energy Efficiency Rating		
	Current	Potential
Very energy efficient - lower running costs		
(92 plus) A		
(81-91) B		
(69-80) C		
(55-68) D		
(39-54) E		
(21-38) F		
(1-20) G		
Not energy efficient - higher running costs		
	89	89
England & Wales	EU Directive 2002/91/EC	

MEADOW CLOSE

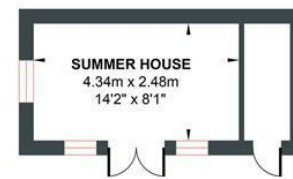
Approximate Gross Internal Area = 281.74 sq m / 3032.62 sq ft
 Illustration for identification purposes only, measurements are approximate, not to scale.



GROUND FLOOR
 Approximate Floor Area
 1485.20 sq ft
 (137.98 sq m)



FIRST FLOOR
 Approximate Floor Area
 1402.75 sq ft
 (130.32 sq m)



OUTBUILDING
 Approximate Floor Area
 144.66 sq ft
 (13.44 sq m)

Foster & Co and their clients give notice that:
 These sales particulars do not constitute any part of an offer of contract and are for guidance for prospective purchases only and should be not relied upon as a statement of fact.
 We are not to be held responsible for material information that has not been given to us by our client at the time of marketing.
 All measurements are approximate

