

104 The Drive

Hove, BN3 6GP

£850,000



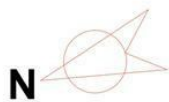
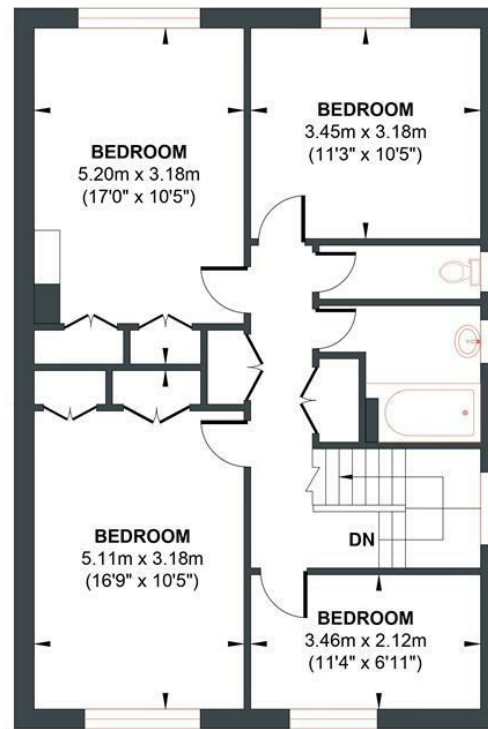
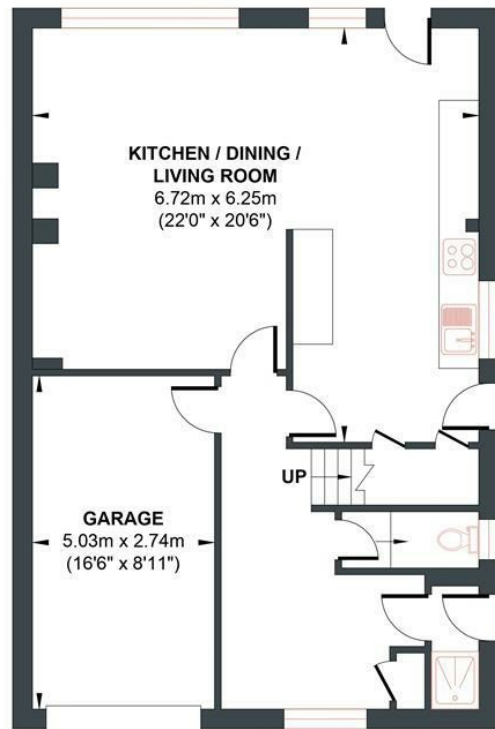
- Large Family Home
- Open Plan Lounge/Kitchen-Diner
- Garage
- Catchment for Local Schools
- Great Size Private Garden
- Off-Street Parking for Two Cars
- Close to Hove Park
- Sold Chain free

Energy Efficiency Rating		
	Current	Potential
Very energy efficient - lower running costs		
(92 plus) A		
(81-91) B		
(69-80) C		
(55-68) D		
(39-54) E		
(21-38) F		
(1-20) G		
Not energy efficient - higher running costs		
	69	83
England & Wales	EU Directive 2002/91/EC	



THE DRIVE

Approx. Gross Internal Floor Area 138.16 sq m / 1487.14 sq ft
 Illustration for identification purposes only, measurements are approximate, not to scale.



GROUND FLOOR
 Approximate Floor Area
 743.57 sq ft
 (69.08 sq m)

FIRST FLOOR
 Approximate Floor Area
 743.57 sq ft
 (69.08 sq m)



Foster & Co and their clients give notice that:
 These sales particulars do not constitute any part of an offer of contract and are for guidance for prospective purchases only and should be not relied upon as a statement of fact.
 We are not to be held responsible for material information that has not been given to us by our client at the time of marketing.
 All measurements are approximate

