

Flat 17 Park View Road

Hove, BN3 7AW

Asking price £975,000

Orchard House this prestigious penthouse is just one of four of its kind. Offering an expansive living experience spanning over 1,600 square feet of living space, this property is an excellent example of premium living in Hove!

This exceptional property comprises three generously sized bedrooms, two bathrooms and ample storage throughout.

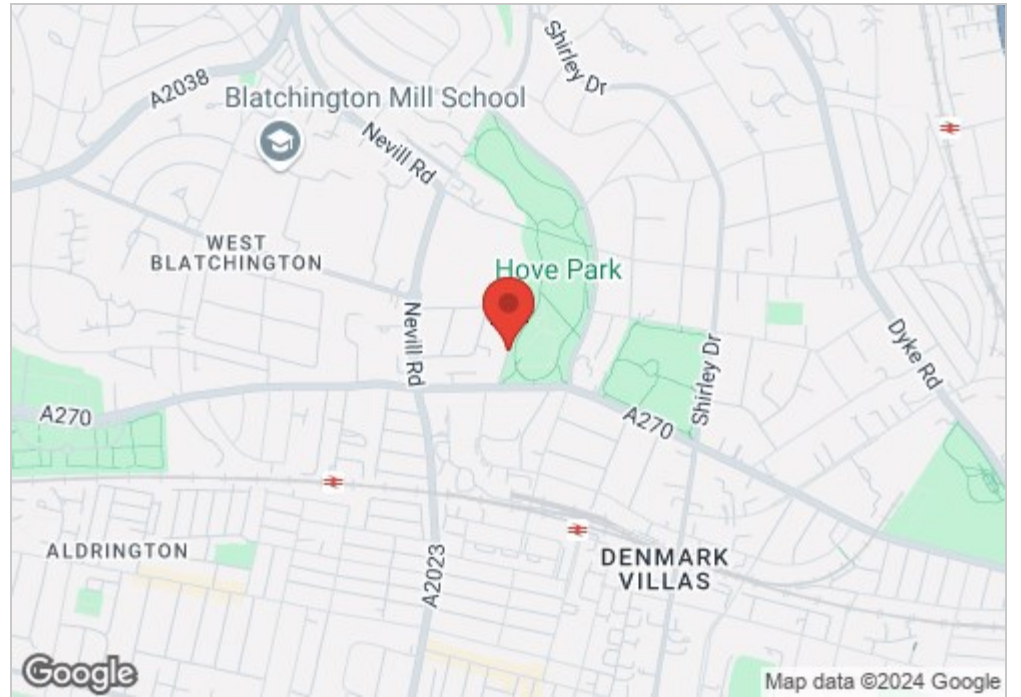
Immerse yourself in the charm of outdoor living with not one but two private balconies. The main bedroom, complete with an en-suite bathroom and plenty of wardrobe space, extends an invitation to the second south facing balcony, shared with bedroom three. Every inch of this penthouse has been thoughtfully designed to maximize your comfort and enjoyment.

The kitchen, a masterpiece of contemporary design, boasts a range of fitted countertops and ample cupboard space, overlooking the expansive living and dining area.

Included with this exceptional property are two allocated parking spaces within the secure underground carpark.

Life in Orchard House is within close proximity to Hove Park, Hove Station, Waitrose and Central Hove.

Dogs are currently not permitted in the building.

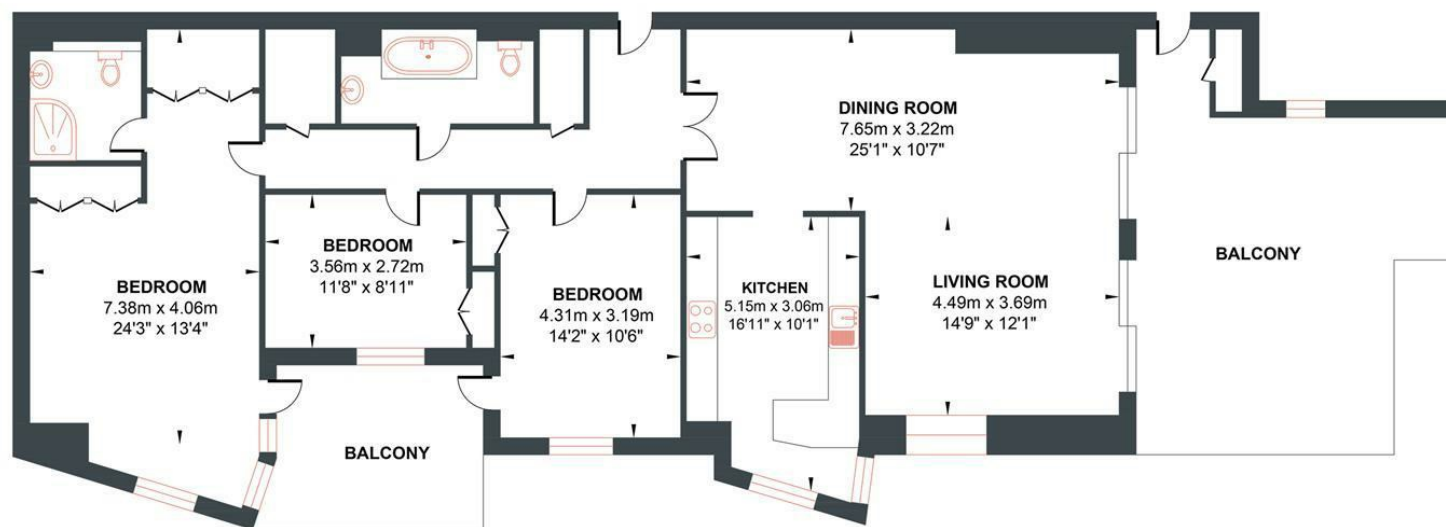


- Penthouse
- 3 Bedrooms
- Large Roof Terrace
- 2 Secure Parking Spaces
- Great Location
- Share Of Freehold
- 1600 sqft
- South Facing Balcony
- Fantastic Views
- 2 Bathrooms

Energy Efficiency Rating		Current	Potential
Very energy efficient - lower running costs			
(92 plus) A			
(81-91) B		81	81
(69-80) C			
(55-68) D			
(39-54) E			
(21-38) F			
(1-20) G			
Not energy efficient - higher running costs			
England & Wales		EU Directive 2002/91/EC	

ORCHARD HOUSE

Approximate Gross Internal Area = 149.0 sq m / 1603.82 sq ft
 Illustration for identification purposes only, measurements are approximate, not to scale.



GROUND FLOOR

Approximate Floor Area
 1603.82 sq ft
 (149.0 sq m)

