

121 Woodland Avenue
Hove, BN3 6BJ

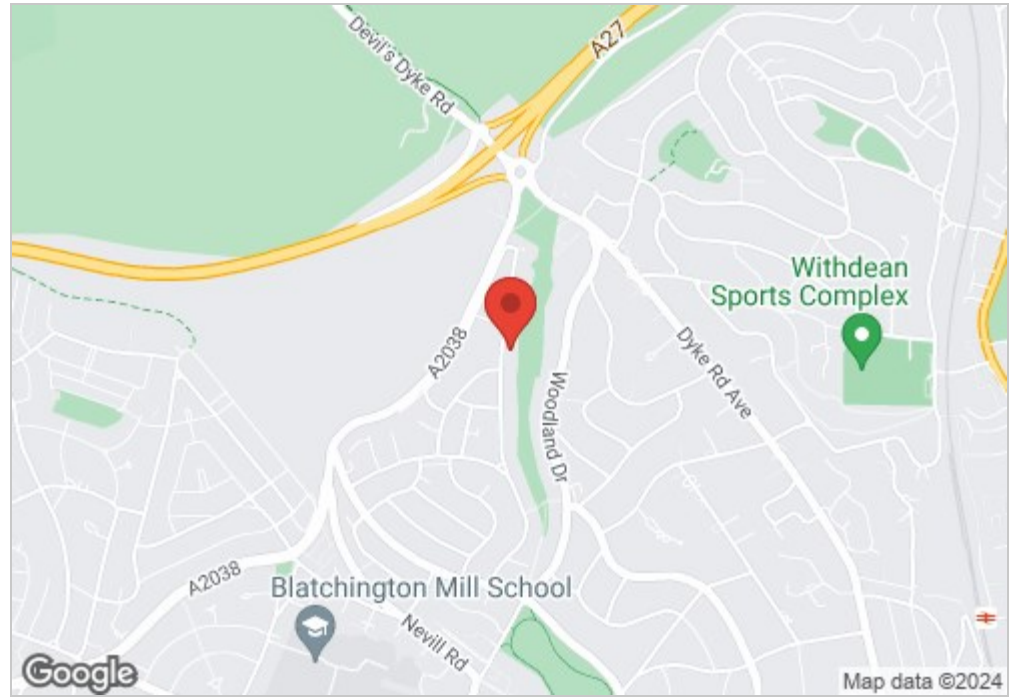
Guide price £1,000,000



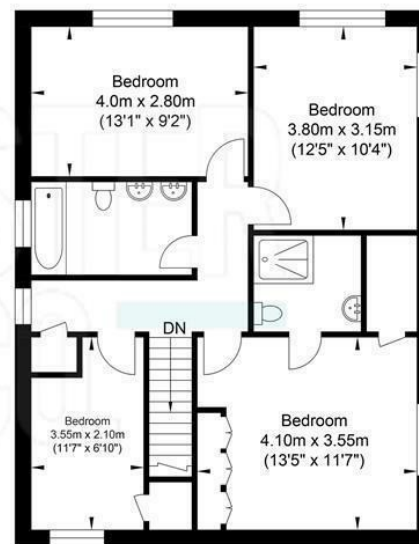
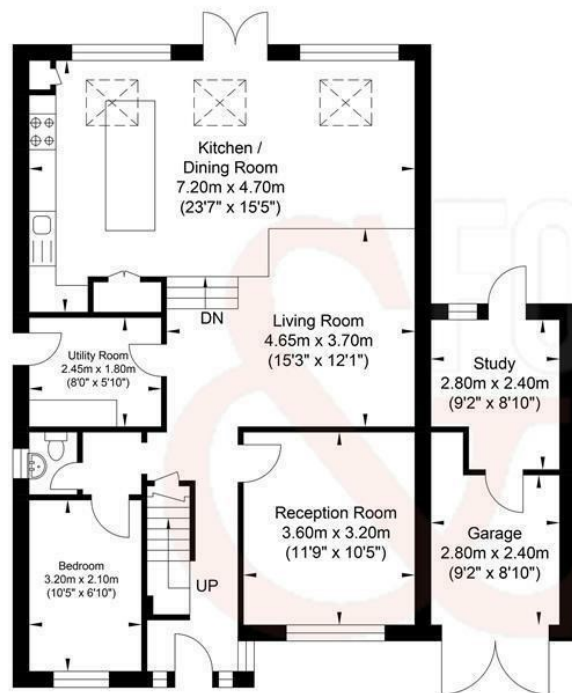
- Detached
- Modern Design
- Large Garden
- Living Room
- Off Road Parking

- 4 Bedrooms
- 2 Bathrooms
- Beautiful Kitchen
- Study
- Guide Price £1,000,000 - £1,100,000

Energy Efficiency Rating		
	Current	Potential
Very energy efficient - lower running costs		
(92 plus) A		
(81-91) B		
(69-80) C		
(55-68) D		
(39-54) E		
(21-38) F		
(1-20) G		
Not energy efficient - higher running costs		
England & Wales		EU Directive 2002/91/EC



Woodland Avenue, Hove



Ground Floor
Approximate Floor Area
1018.91 sq ft
(94.66 sq m)

First Floor
Approximate Floor Area
728.50 sq ft
(67.68 sq m)

Approximate Gross Internal Area = 162.34 sq m / 1747.41 sq ft
Illustration for identification purposes only, measurements are approximate, not to scale.