



Hill Brow

Hove, BN3 6QH

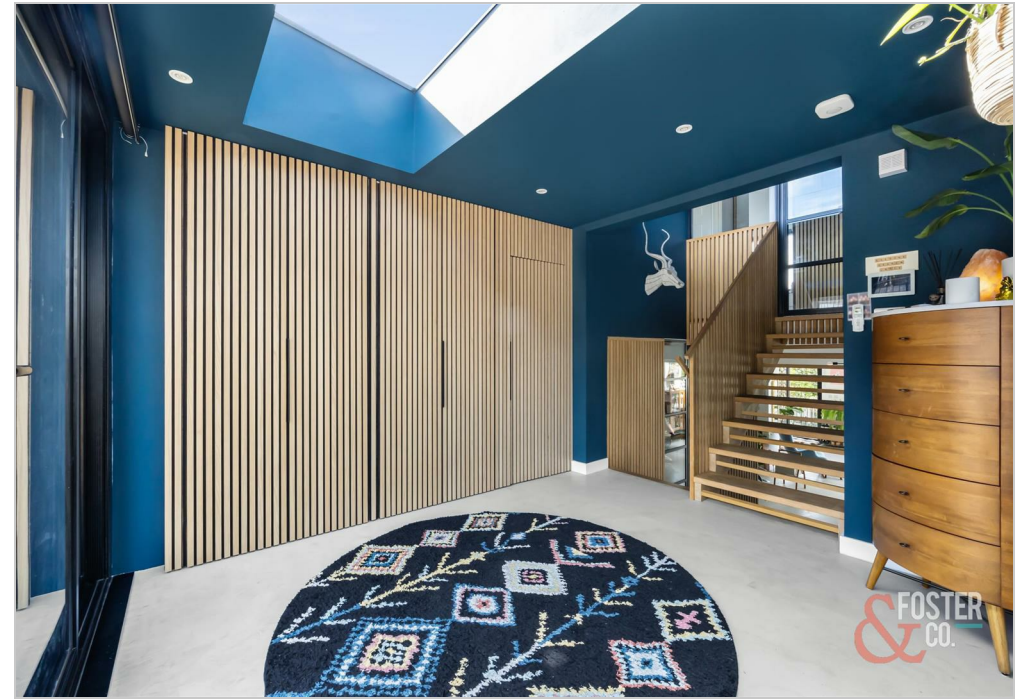


Hill Brow

Hove, BN3 6QH

£10,000 Per month

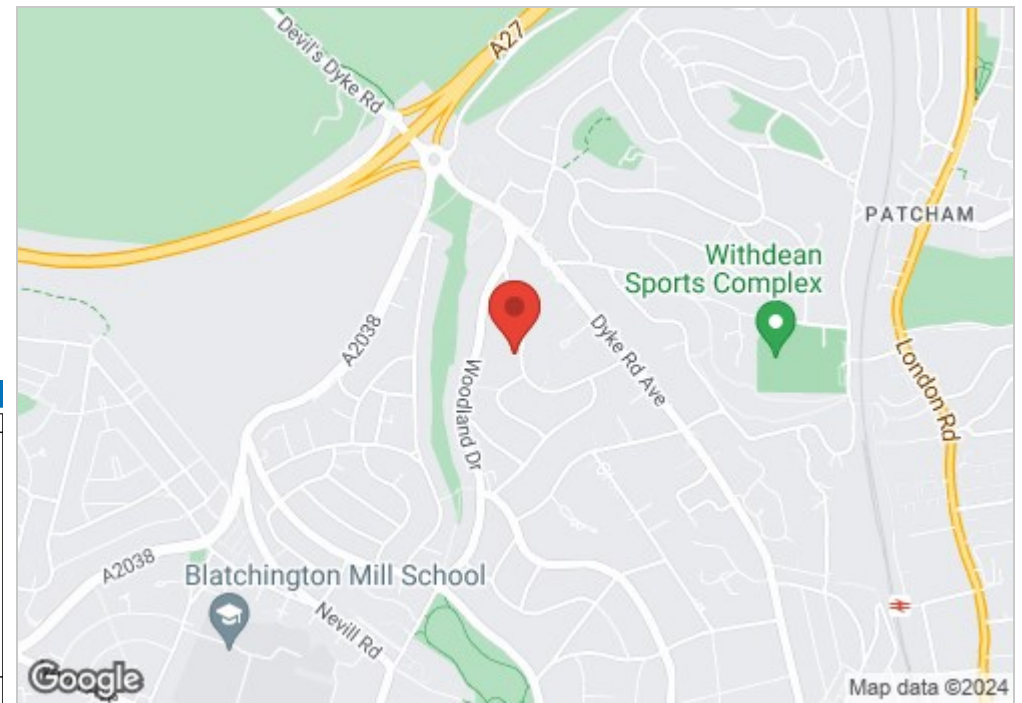
Foster & Co are delighted to offer this exceptional residence to rent which epitomises modern luxury living at its finest. This remarkable 5-bedroom, 4-bathroom detached family home, nestled in the sought-after Hove Park area, commands attention with its sleek contemporary design and captivating views stretching over the city and towards the sea. Boasting over 3,019 square feet of meticulously crafted living space, this home has undergone recent renovations and expansions, resulting in an unparalleled fusion of style, comfort, and functionality.



- Detached
- Study
- Pool House
- Zinc Cladding
- Long term
- 5 Bedrooms
- Swimming Pool
- Open Plan
- Gated
- Off Road Parking

Energy Efficiency Rating		Current	Potential
Very energy efficient - lower running costs			
(92 plus) A			
(81-91) B			
(69-80) C			
(55-68) D			
(39-54) E			
(21-38) F			
(1-20) G			
Not energy efficient - higher running costs			
		89	90

England & Wales EU Directive 2002/91/EC



HILL BROW

Approximate Gross Internal Area = 280.50 sq m / 3019.27 sq ft
 Illustration for identification purposed only, measurements are approximate, not to scale.



