

194 Nevill Road

Hove, BN3 7QQ

Offers in excess of £650,000

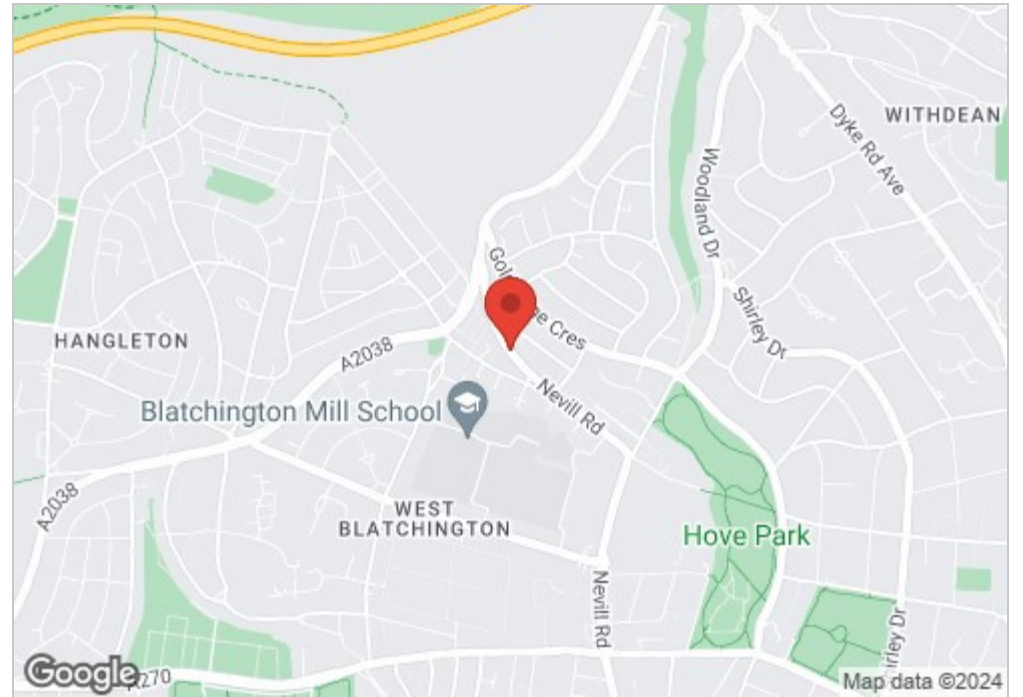
This charming three bedroom, one bathroom home is situated on Nevill Road in the desirable area of Hove close to Hove Park. Boasting a fusion of comfort and convenience, this property is perfect for families and professionals alike.

Upon entering, you're greeted by a warm and inviting atmosphere, with a spacious snug/reception room to the front offering ample space for relaxation and entertaining. The neutral decor throughout creates a sense of tranquility, while large windows flood the rooms with natural light, enhancing the airy ambiance.

The well-appointed family kitchen/ dining area provides the ideal space for culinary endeavours, complete with modern appliances and plenty of storage options. From here, step out into the delightful garden, a private sanctuary where you can unwind amidst lush greenery or host al fresco gatherings with loved ones.

Upstairs, three generously-sized bedrooms offer comfortable accommodation, each adorned with soft carpeting and the two larger rooms featuring built-in cupboards for added convenience.

Convenience is key with off-road parking at the front of the property. Situated in close proximity to local schools and amenities, including shops, cafes, and transport links, everything you need is within easy reach, making everyday living a breeze.

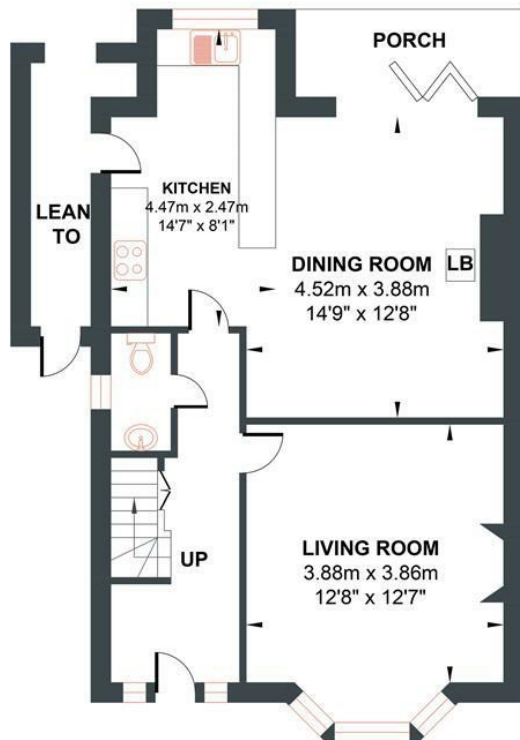


- Semi Detached
- Kitchen Dining Room
- Open Fire and log burner
- Off Road Parking
- Close to Schools
- 3 Bedrooms
- Living Room
- Lovely West Facing Garden
- Great Location
- Generous loft space

Energy Efficiency Rating		
	Current	Potential
Very energy efficient - lower running costs		
(92 plus) A		
(81-91) B		
(69-80) C		
(55-68) D		
(39-54) E		
(21-38) F		
(1-20) G		
Not energy efficient - higher running costs		
	67	79
England & Wales	EU Directive 2002/91/EC	

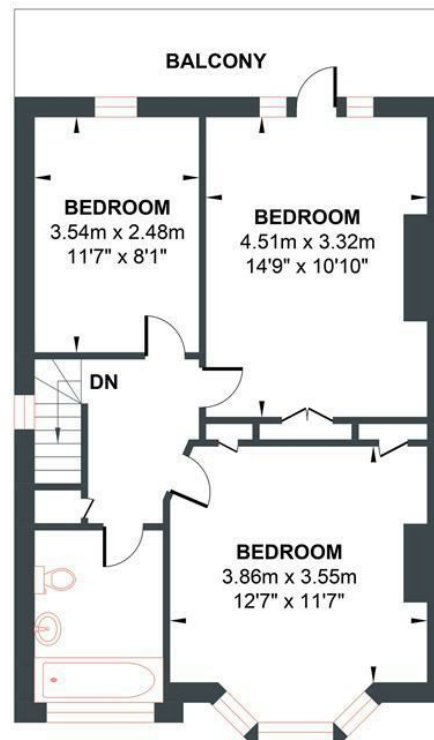
NEVILLE ROAD

Approximate Gross Internal Area (Excluding Lean To) = 105.13 sq m / 1131.61 sq ft
 Illustration for identification purposes only, measurements are approximate, not to scale.



GROUND FLOOR

Approximate Floor Area
 575.33 sq ft
 (53.45 sq m)



FIRST FLOOR

Approximate Floor Area
 556.27 sq ft
 51.68 sq m)

