

19 Castle Street

Brighton, BN1 2HD

Offers in excess of £850,000

A unique house in the heart of vibrant Brighton! Nestled just a short stroll away from the bustling town centre and the picturesque seafront, this large and uniquely designed open-plan house is a true gem.

Situated within walking distance from Brighton town centre, you'll have easy access to an array of shops, restaurants, and cultural attractions. Whether you're in the mood for a leisurely stroll or a night out on the town, everything is just moments away.

This house features two generously sized bedrooms, two bathrooms & a large integral garage, providing secure parking and additional storage space. Perfect for those who appreciate the convenience of city living without compromising on practicality.

Embrace the modern lifestyle with a spacious open-plan design that seamlessly connects the living, dining, and kitchen areas. Natural light floods the interiors, creating a bright and welcoming atmosphere.

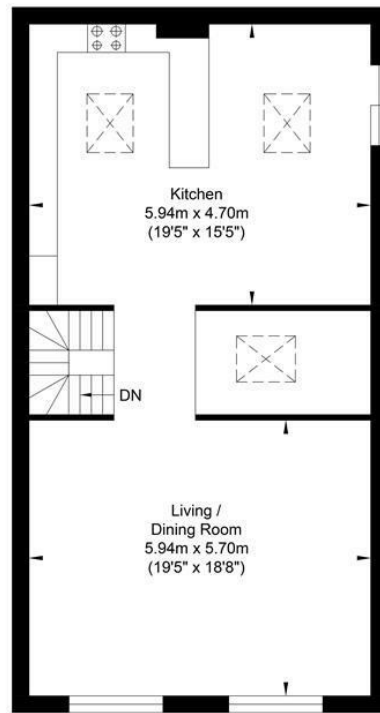
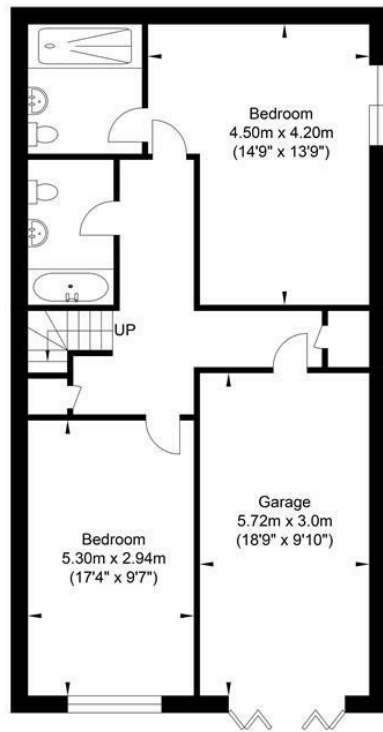
Take advantage of the close proximity to the stunning Brighton seafront. Enjoy relaxing walks along the beach, breathtaking sea views, and the lively atmosphere of one of the most iconic coastal areas in the UK.



- Fantastic Location
- Integral Garage
- Two Bathroom
- Patio Garden
- Open Plan Living
- Two Bedroom
- Close To Seafront
- Additional Development Potential (stnc)

Energy Efficiency Rating		
	Current	Potential
Very energy efficient - lower running costs		
(92 plus) A		
(81-91) B		84
(69-80) C		
(55-68) D	63	
(39-54) E		
(21-38) F		
(1-20) G		
Not energy efficient - higher running costs		
England & Wales	EU Directive 2002/91/EC	

Castle Street



Ground Floor
Approximate Floor Area
773.70 sq ft
(71.88 sq m)

First Floor
Approximate Floor Area
773.70 sq ft
71.88 sq m)

Approximate Gross Internal Area = 143.76 sq m / 1547.42 sq ft
Illustration for identification purposes only, measurements are approximate, not to scale.