



15 Hawthorn Court

Gosforth



15 Hawthorn Court, Gosforth

Well Presented Second Floor Apartment Boasting Two Double Bedrooms, Ensuite & Family Bathroom, Substantial Living/Dining Room, Generous Kitchen & Allocated Parking!

Hawthorn Court was constructed in 2001 on the former site of the police station on Hawthorn Road and they are ideally located for very convenient and immediate access to the High Street with its shops, banks and offices. The rear courtyard and parking are secure with electrically operated gated access.

The communal areas are attractive and well presented with secure entry access to the front and rear.





The accommodations includes: Communal entrance at ground floor level with stair access to all floors | Private entrance on second floor level | A lovely entrance reception hall with storage cupboard | Access to the large open lounge/dining room | Kitchen/breakfast room which benefits from modern cabinetry and worktops, as well as integrated appliances throughout | Master bedroom with built in wardrobes and storage cupboards with refitted ensuite shower room/WC | Double bedroom with built in double wardrobe | Family bathroom which offers a three piece suite | Loft storage.

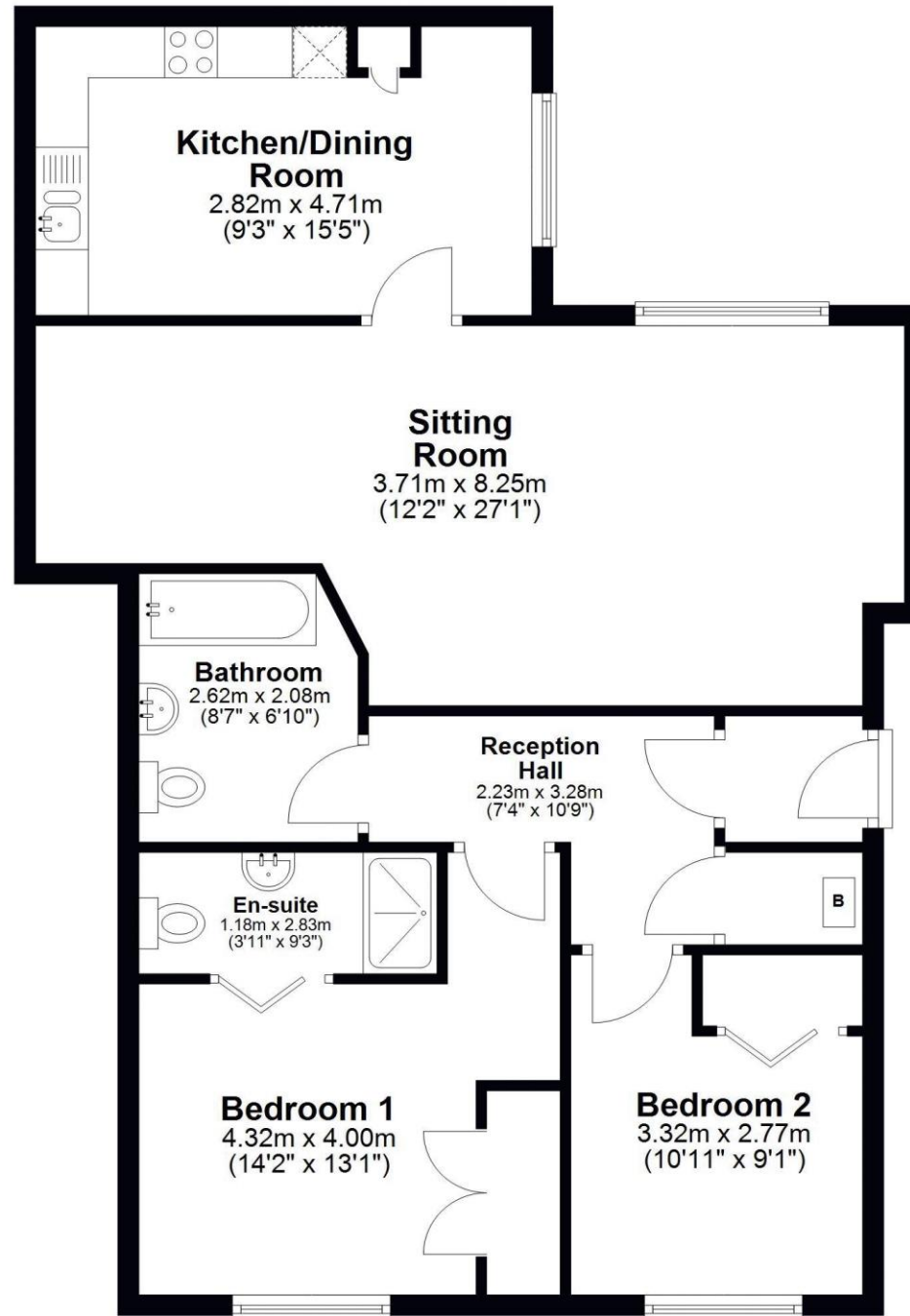
Viewing is highly recommended to avoid later disappointment.

Services | Mains; Electricity, Gas, Water, Drainage | Tenure; Leasehold | Lease Term Remaining; 100 Years | Ground Rent; £90 | Service Charge; £2,307.72 | Council Tax; Band C | Energy Performance Certificate; Rating B

Price Guide: Guide Price £225,000

First Floor

Approx. 82.1 sq. metres (884.0 sq. feet)



Total area: approx. 82.1 sq. metres (884.0 sq. feet)

15 Hawthorn Court, Gosforth



SANDERSON YOUNG

Regional Gosforth Office
95 High Street | Gosforth
Newcastle upon Tyne | NE3 4AA
gosforth@sandersonyoung.co.uk
0191 213 0033